

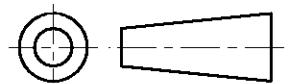
DO NOT SCALE

DIMENSIONS IN mm

METRIC

THIRD ANGLE

PROJECTION



NOTES

- 1 NO BEAT IN LOCKING LANCE REQUIRED.
- 2 FOR HIGHER EXTRACTION FORCE APPLICATION.
- 3 OBSOLETE PARTS: OBSOLETE CIS STREAMLINING PER D.RENAUD/D.SINISI

GENERAL TOLERANCES  $\pm 0.3$

3 OBSOLETE		PRE-TINPLATED	PH. BRONZE	<del>6-160526-8</del>	
		PRE-TINPLATED	BRASS	<del>6-160526-7</del>	
	2/1	UNPLATED	BRASS	9-160526-4	
		TINPLATED	PH. BRONZE	6-160526-2	
		SILVERPLATED	BRASS	6-160526-1	
		SILVERPLATED	PH. BRONZE	6-160526-0	
		TINPLATED	PH. BRONZE	5-160526-9	
		UNPLATED	PH. BRONZE	5-160526-8	
		TINPLATED	BRASS	5-160526-7	
		UNPLATED	BRASS	5-160526-6	
		TINPLATED	PH. BRONZE	160526-4	
NOTES		FINISH	MATERIAL	PART NUMBER	REV

CUSTOMER DRAWING FOR REFERENCE ONLY  
WILL NOT BE UPDATED

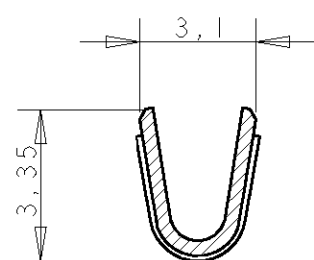
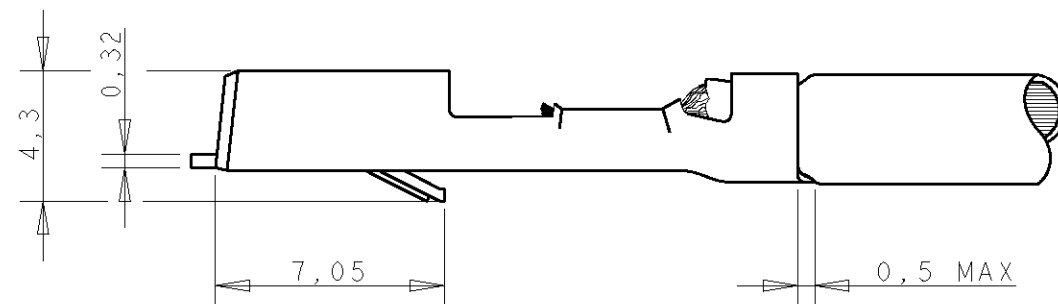
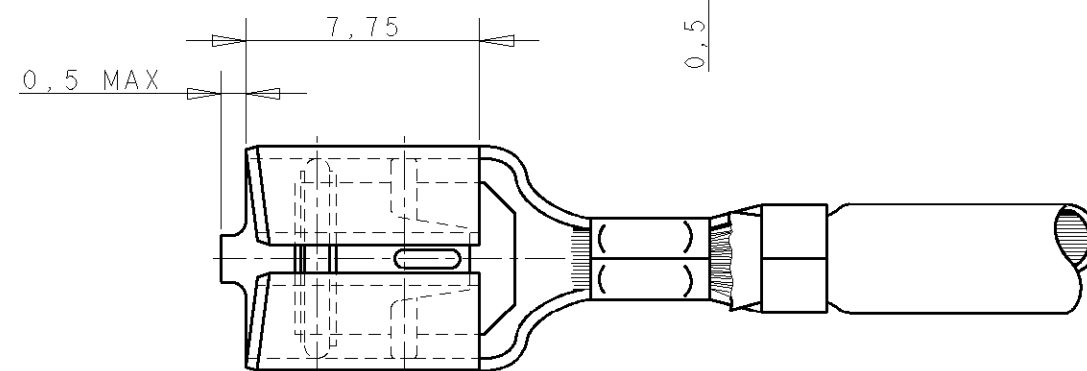
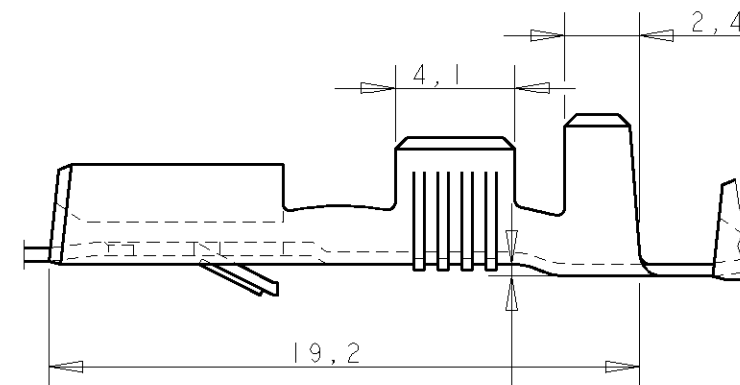
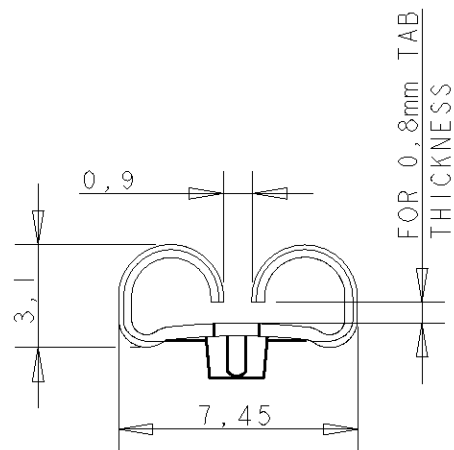
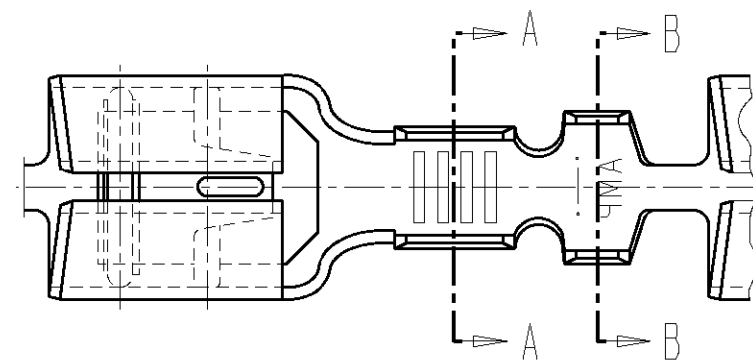
THIS DRAWING IS UNPUBLISHED  
RELEASED FOR PUBLICATION ,10

**TE** TE Connectivity

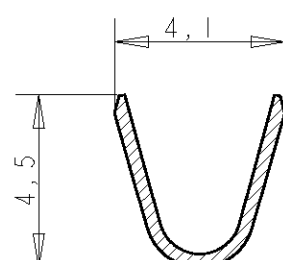
NAME  
FASTIN-FASTON® Connector,  
.250" sr. REC. CONTACT.

DWG.No. C-160526 REV.LTR. AL3 SHEET 1 OF 1 A3

AL3	REVISED PER ECO-11-005140	RK	HMR	01APR11
LTR.	REVISION RECORD	DR.	CHK.	DATE
DR.: J.v.LIEMPT.	CHK.: A.BIJNEN.	APP.: L.v.SOEST.	DWG.No.	
DATE: 23 MAR 1992	DATE: -	DATE: -		



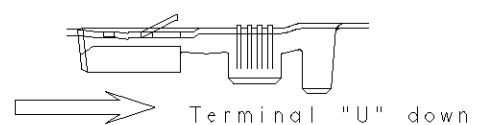
SECTION A-A



SECTION B-B

WIRE RANGE :  
0.5-1.5 mm<sup>2</sup>  
INSULATION RANGE :  
2.3-3.3mm DIA.

DIRECTION OFF TOP OF REEL



# Mouser Electronics

Authorized Distributor

Click to View Pricing, Inventory, Delivery & Lifecycle Information:

[TE Connectivity:](#)

[6-160526-1](#)