

THIS DRAWING IS UNPUBLISHED.

RELEASED FOR PUBLICATION

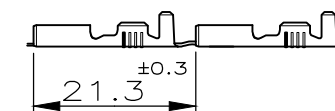
ALL RIGHTS RESERVED.

© COPYRIGHT — By —

## REVISIONS

| P | LTR | DESCRIPTION               | DATE      | DWN | APVD |
|---|-----|---------------------------|-----------|-----|------|
|   | AW9 | REVISED PER ECR-19-003911 | 12MAR2019 | BH  | E.W  |

1) STATO DI FORNITURA — SCALA 1:1  
(SUPPLY CONDITION — SCALE 1:1)



SENSO DI USCITA  
DEL TERMINALE  
DALLA BOBINA  
(DIRECTION OFF  
TOP OF REEL)

2) SPECIFICA DI PRODOTTO 108-20019  
(PRODUCT SPEC. 108-20019)  
SPECIFICA DI APPLICAZIONE 114-20023  
(APPLICATION SPEC. 114-20023).

3) PER LE VERSIONI IN PEZZI SCIOLTI  
VEDERE DISEGNO 160506  
(FOR LOOSE PIECE VERSION SEE DRAWING 160506).

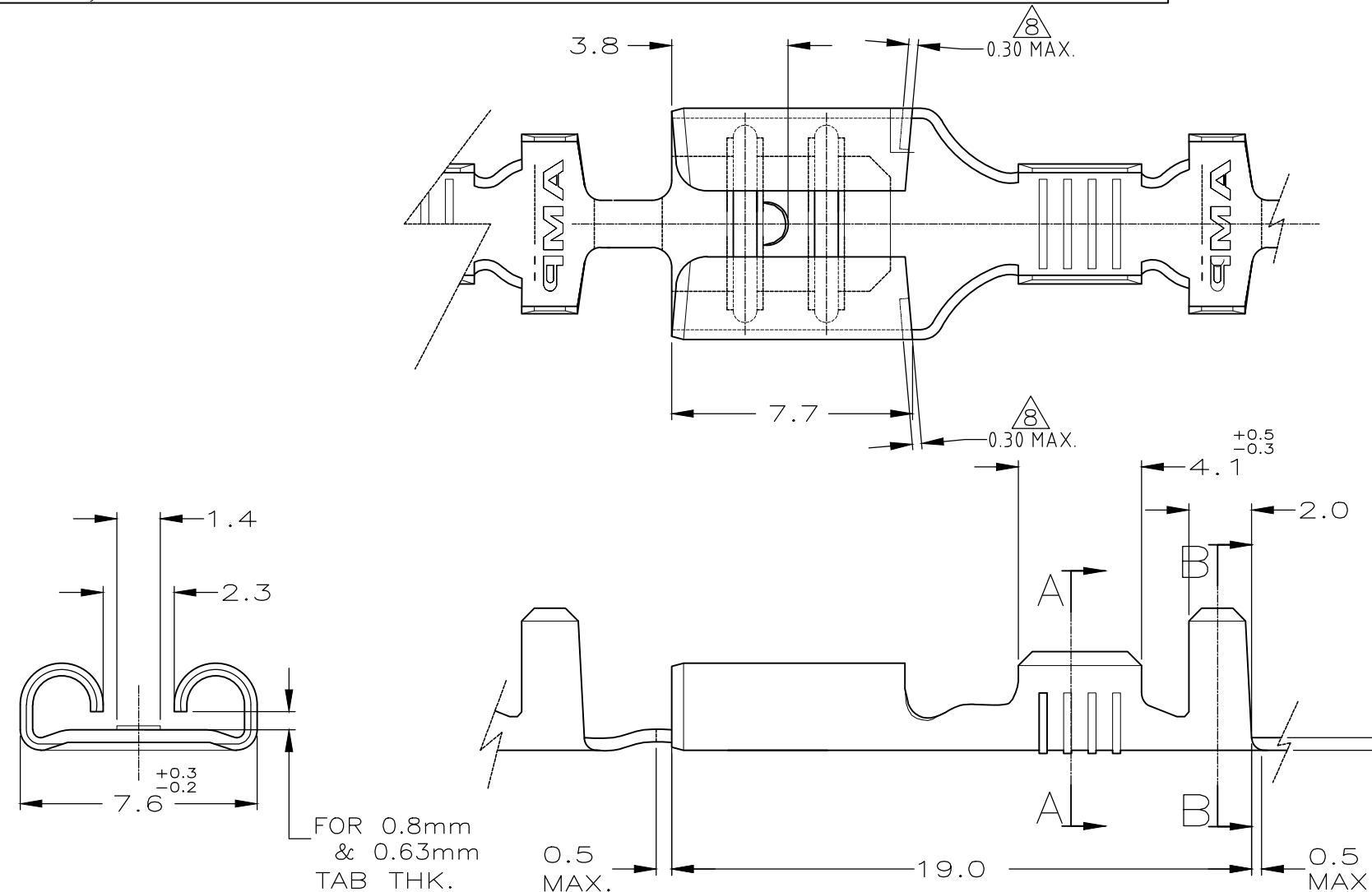
4) NON IN PRODUZIONE  
(NOT YET RELEASE FOR PRODUCTION)

5) ADATTO PER ALTA FORZA DI ESTRAZIONE  
(SUITABLE FOR HIGHER EXTRACTION FORCE)

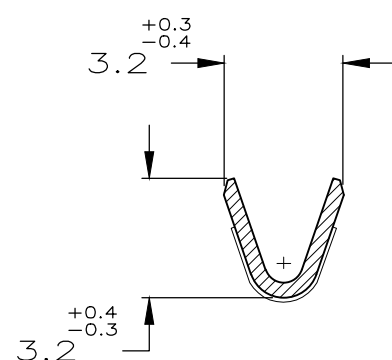
6) ADATTO PER TAB SPESSO 0.63mm.  
(FOR 0.63mm TAB THK.)

7) PACKAGE WITH INTERLAYER PAPER  
0.4  
MAT. THK.

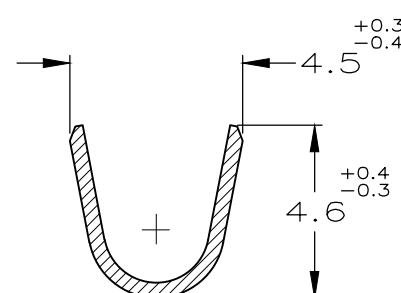
8) CUT-OFF OFFSET IS ALLOWED BY 0.3mm MAX.  
THIS MAY BE REQUIRED FOR MANUFACTURING,  
BUT WILL NOT IMPACT THE INTENDED PERFORMANCE  
OF THE CONTACT.



SEZIONE A-A  
(SECTION A-A)



SEZIONE B-B  
(SECTION B-B)



|         |                                  |                 |                          |         |              |     |
|---------|----------------------------------|-----------------|--------------------------|---------|--------------|-----|
| 7/4     | STAGNATO                         | (TINPLATED)     | OTTONE                   | (BRASS) | 7-160432-4   | AY  |
| 6/4     | STAGNATO                         | (TINPLATED)     | OTTONE                   | (BRASS) | 7-160432-3   | AY  |
| 5/4     | STAGNATO                         | (TINPLATED)     | OTTONE                   | (BRASS) | 7-160432-2   | AW  |
| 5/4     | NUDO                             | (UNPLATED)      | OTTONE                   | (BRASS) | 7-160432-1   | AW  |
|         | STAGNATO                         | (TINPLATED)     | OTTONE                   | (BRASS) | 7-160432-0   | AU  |
|         | NUDO                             | (UNPLATED)      | BRONZO FOSF.(PH. BRONZE) |         | 6-160432-4   | AU  |
|         | PRE NICHELATO(PRE NICKEL PLATED) |                 | ACCIAIO                  | (STEEL) | 6-160432-3   | AU  |
|         | STAGNATO                         | (TINPLATED)     | BRONZO FOSF.(PH. BRONZE) |         | 6-160432-0   | AU  |
|         | ARGRNTATO                        | (SILVER PLATED) | OTTONE                   | (BRASS) | 5-160432-7   | AW  |
|         | STAGNATO                         | (TINPLATED)     | OTTONE                   | (BRASS) | 5-160432-4   | AU  |
|         | NUDO                             | (UNPLATED)      | OTTONE                   | (BRASS) | 5-160432-3   | AW  |
| NOTE    | FINITURA (FINISH)                |                 | MATERIALE (MATERIAL)     |         | NUMERO (P/N) | REV |
| (NOTES) |                                  |                 |                          |         |              |     |

THIS DRAWING IS A CONTROLLED DOCUMENT.

DWN H.YAALI 14 MAY 99

CHK C.TARTARI 14 MAY 99

APVD —

PRODUCT SPEC

APPLICATION SPEC

WEIGHT 0.785

CUSTOMER DRAWING

**STE** TE ConnectivityFASTON® Connector  
.250 SERIES REC. CONTACT

SIZE CAGE CODE DRAWING NO RESTRICTED TO

A300779 C-160432

SCALE — SHEET 1 OF 1 REV AW9

# Mouser Electronics

Authorized Distributor

Click to View Pricing, Inventory, Delivery & Lifecycle Information:

[TE Connectivity:](#)

[7-160432-3](#)