



SIZE	B DIM	C DIM $\pm .0050$	(L DIM)
09	.229	.3085	(.100)
15	.304	.3835	(.175)
25	.429	.5085	(.300)
37	.579	.6585	(.450)
51	.754	.8335	(.625)
65	.929	1.0085	(.800)

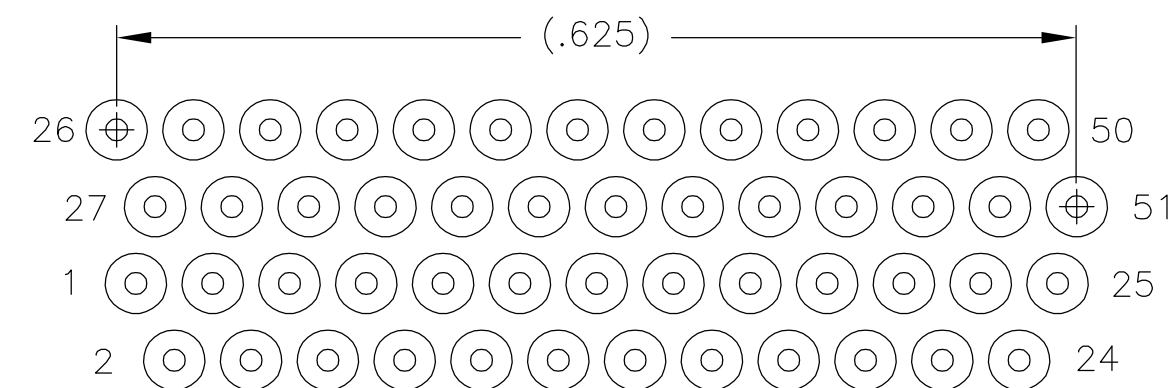
- | | | |
|---|---|--|
| 1 | SHELL OPTIONS (TO BE SPECIFIED IN NANONICS PART NUMBER):
METAL: 6061-T6 ALUMINUM, ELECTROLESS NICKEL PLATED PER SAE-AMS-C-26074 (STANDARD) OR GOLD PLATED PER ASTM B488
303 STAINLESS STEEL, PASSIVATED PER SAE-AMS-2700
INSULATOR MATERIAL FOR ALL METAL SHELLS IS LIQUID CRYSTAL POLYMER (LCP) PER MIL-M-24519 OR PER ASTM D5138 | |
| 2 | PLASTIC: LIQUID CRYSTAL POLYMER (LCP) PER MIL-M-24519 OR PER ASTM D5138
STANDARD 1.00UNM CAPTIVE JACKSCREWS ARE SHOWN FOR REFERENCE ONLY AND MUST BE SPECIFIED IN THE NANONICS PART NUMBER WHEN REQUIRED. JACKSCREW MATERIAL IS 303 STAINLESS STEEL, PASSIVATED PER SAE-AMS-2700, AND DRY LUBED PER DOD-L-85645. RETAINING RING IS 17-4 STAINLESS STEEL, PASSIVATED PER SAE-AMS-2700. JACKSCREWS HAVE A .9mm HEX SOCKET HEAD. 1.20UNM JACKSCREWS ALSO AVAILABLE. | |
| 3 | MOUNTING HARDWARE IS AVAILABLE WITH THIS CONFIGURATION (NOT SHOWN). HARDWARE MUST BE SPECIFIED IN THE NANONICS PART NUMBER. CONSULT TYCO ELECTRONICS FOR DETAILS. | |
| 4 | LEAD MATERIAL: HH BRASS, GOLD PLATED PER ASTM B488 | |
| 5 | INSULATOR BOARD MATERIAL: G10 OR EQUIVALENT | |
| 6 | EPOXY ENCAPSULATION USING FREY CF-3003 EPOXY | |
| 7 | NANONICS TERMINATION CODE: W9 | |
| 8 | THIS DRAWING PREVIOUSLY IDENTIFIED AS NANONICS N10138/254 | |

THIS DRAWING IS A CONTROLLED DOCUMENT.		DWN C SCHOLL	26 SEP 05	 Tyco Electronics Corporation Harrisburg, PA 17105-3608	
		CHK M STORRY	26 SEP 05		
DIMENSIONS: INCHES		TOLERANCES UNLESS OTHERWISE SPECIFIED:		NAME	
		0 PLC ± - 1 PLC ± - 2 PLC ± .010 3 PLC ± .005 4 PLC ± - ANGLES ± ± 1°		RECP ASSEMBLY, HORIZONTAL MOUNT, INVERTED, THROUGH HOLE, 2 TO 4 ROW, .050 SPACING, PLASTIC OR METAL, GOLD LEADS, ROHS COMPLIANT	
MATERIAL		FINISH		SIZE	RESTRICTED TO
SEE NOTES		SEE NOTES		CAGE CODE A2 0PJN9	DRAWING NO C-1589939
		WEIGHT -		-	
CUSTOMER DRAWING				SCALE 8:1	SHEET 1 of 2
				REV	A

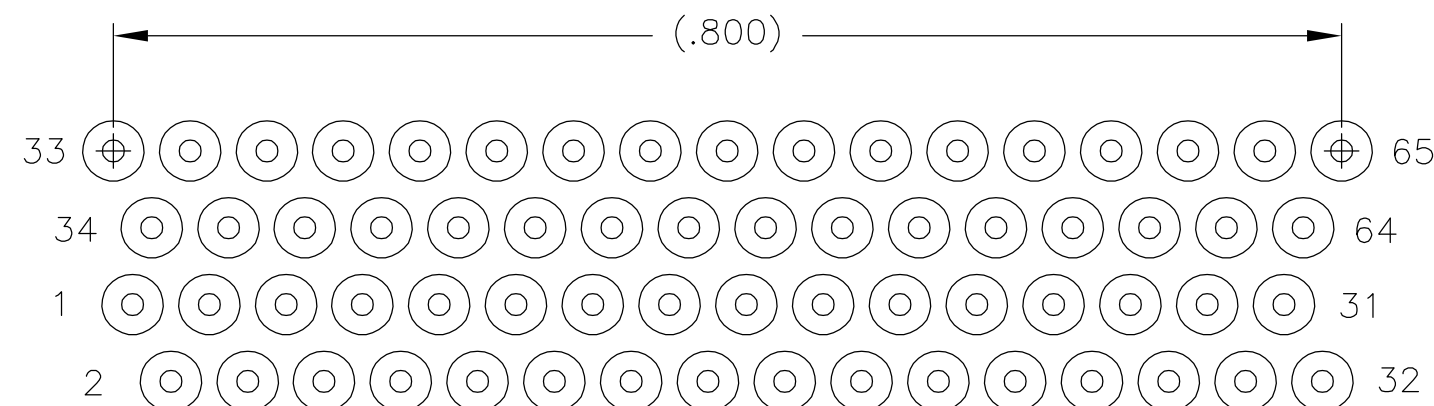
15899.39

--	--

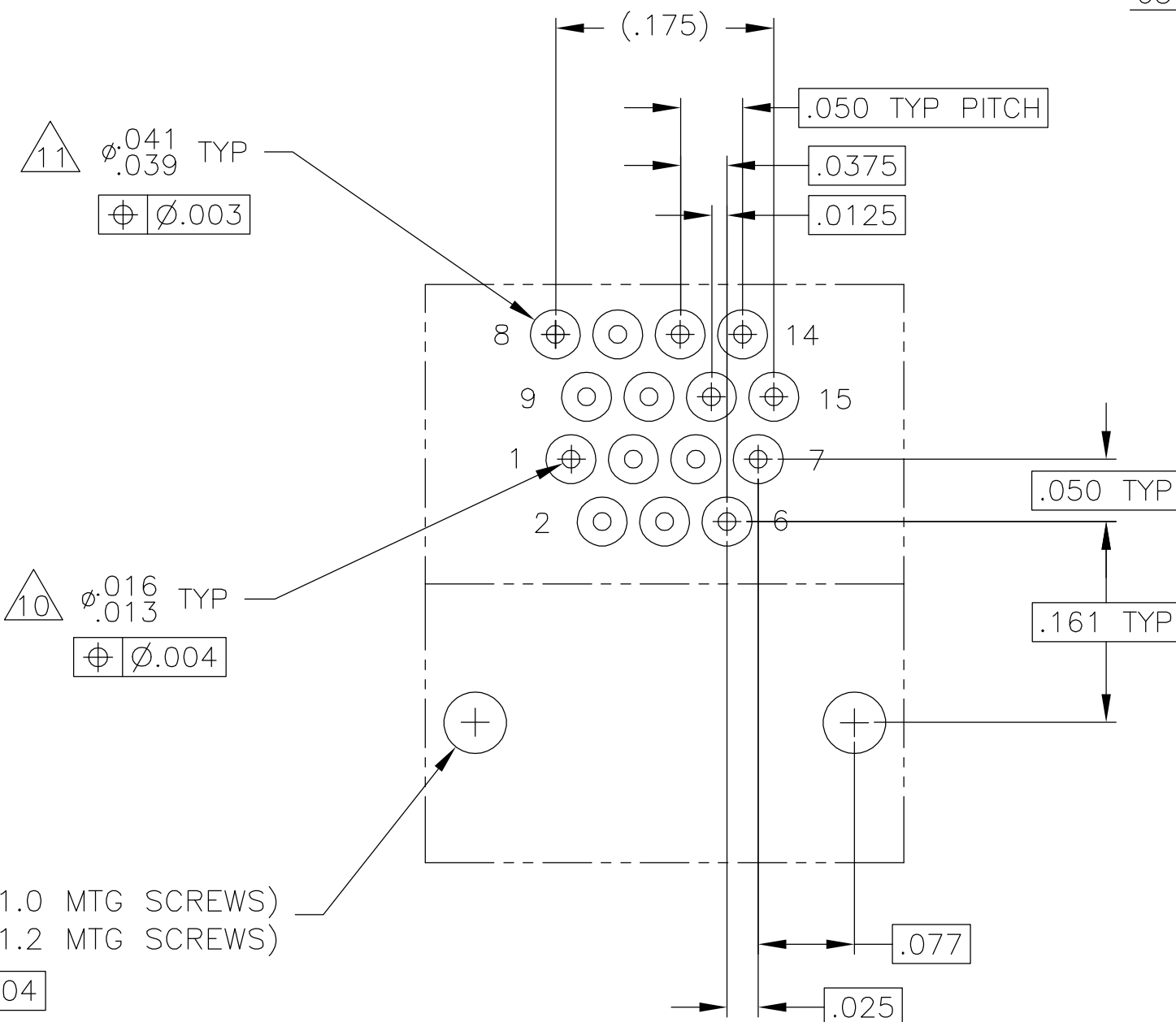
A



51 POSITION



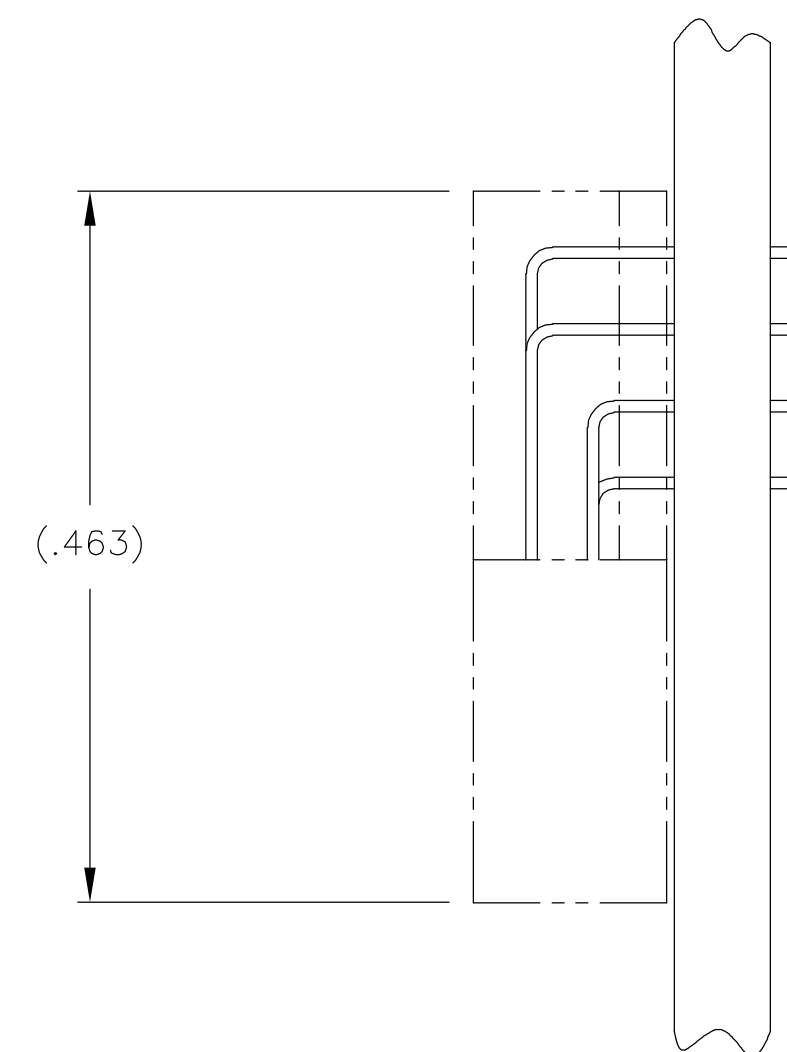
65 POSITION



2X $\phi.050\pm.002$ (FOR 1.0 MTG SCREWS)
 $\phi.058\pm.002$ (FOR 1.2 MTG SCREWS)

\varnothing	.004
---------------	------

TYPICAL PCB LAYOUT 
SIZE 15 SHOWN FOR REFERENCE




1589939

[illegible]

A

	POSITIONAL TOLERANCES FOR BASIC DIMENSIONED FEATURES ARE RELATIVE TO FIDUCIALS OR SOME SIMILAR DATUM REFERENCES DEFINED BY PCB DESIGNER
	PLATED THROUGH HOLES
	SOLDER PADS
12	ALL THROUGH HOLE LAYOUTS ARE AS VIEWED FROM TOP OF PCB

THIS DRAWING IS A CONTROLLED DOCUMENT.		DWN C SCHOLL 26 SEP 05		tyco Electronics		Tyco Electronics Corporation		
		CHK M STORRY 26 SEP 05				Harrisburg, PA 17105-3608		
DIMENSIONS: INCHES		TOLERANCES UNLESS OTHERWISE SPECIFIED:		NAME		RECP ASSEMBLY, HORIZONTAL MOUNT, INVERTED, THROUGH HOLE, 2 TO 4 ROW, .050 SPACING, PLASTIC OR METAL, GOLD PLATED, ROHS COMPLIANT		
		APVD —		PRODUCT SPEC — APPLICATION SPEC —				
0 PLC ± — 1 PLC ± — 2 PLC ± .010 3 PLC ± .005 4 PLC ± — ANGLES ± ± 1°		WEIGHT —		SIZE	CAGE CODE	DRAWING NO	RESTRICTED TO	
MATERIAL		FINISH		A2	OPJN9	C-1589939	—	
SEE NOTES		SEE NOTES		CUSTOMER DRAWING				SCALE 8:1
				SHEET 2 of 2		REV A		

Mouser Electronics

Authorized Distributor

Click to View Pricing, Inventory, Delivery & Lifecycle Information:

[TE Connectivity:](#)

[1589939-2](#)