
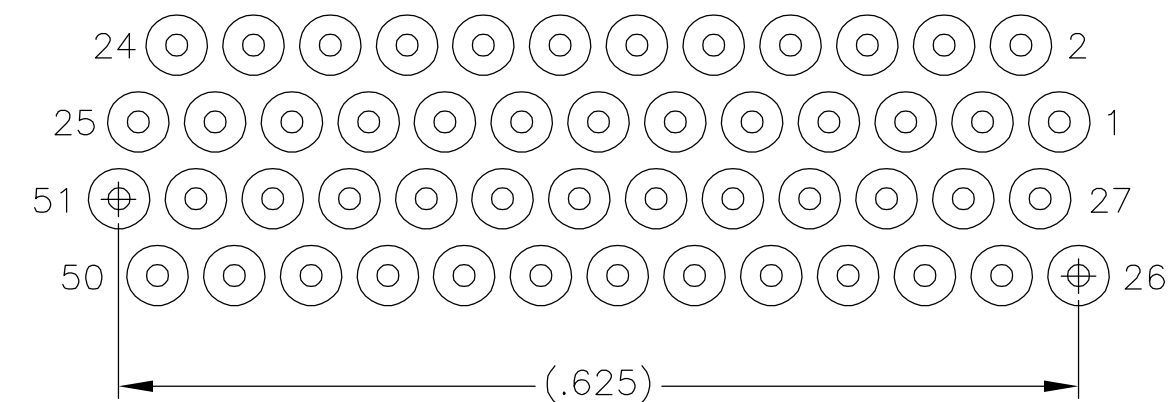


LOC		DIST		REVISIONS			
P	LTR	DESCRIPTION		DATE	DWN	APVD	
	D	UPDATE PER ECO-06-004070		21 FEB 06	MJS	MKS	

SIZE	B DIM	C DIM ±.0050	(L DIM)
09	.229	.3085	(.100)
15	.304	.3835	(.175)
25	.429	.5085	(.300)
37	.579	.6585	(.450)
51	.754	.8335	(.625)
65	.929	1.0085	(.800)

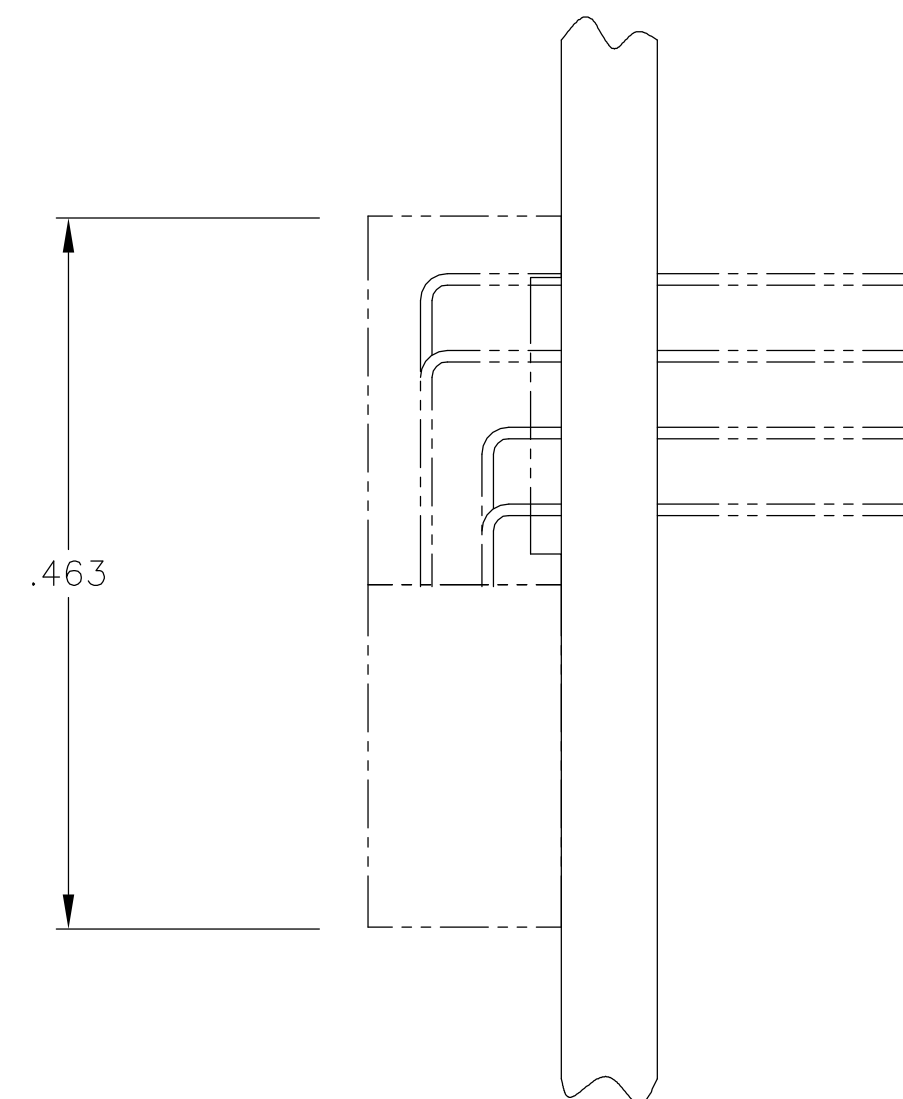
THIS DRAWING IS A CONTROLLED DOCUMENT.			DWN C SCHOLL 29 OCT 04	tyco Electronics Tyco Electronics Corporation Harrisburg, PA 17105					
DIMENSIONS: INCHES			CHK M. STORRY 29 OCT 04	NAME					
	TOLERANCES UNLESS OTHERWISE SPECIFIED:		APVD —	RECEPTACLE ASSEMBLY, HORIZONTAL MOUNT, THROUGH HOLE, 2 TO 4 ROW, .050 SPACING, PLASTIC OR METAL					
	0 PLC ± —		PRODUCT SPEC —						
	1 PLC ± —		—						
	2 PLC ± .010		APPLICATION SPEC	SIZE A2	CAGE CODE OPJN9	DRAWING NO C=1589898	RESTRICTED TO —		
	3 PLC ± .005		—						
4 PLC ± —		WEIGHT —							
ANGLES ± 1		FINISH							
MATERIAL SEE NOTES		SEE NOTES	CUSTOMER DRAWING				SCALE 8:1	SHEET 1 of 2	REV D



51 POSITION



TYPICAL PCB LAYOUT 
SIZE 15 SHOWN FOR REFERENCE





1589898

B

A

	POSITIONAL TOLERANCES FOR BASIC DIMENSIONED FEATURES ARE RELATIVE TO FIDUCIALS OR SOME SIMILAR DATUM REFERENCES DEFINED BY PCB DESIGNER.
	PLATED THROUGH HOLES
	SOLDER PADS
12.	ALL THROUGH HOLE LAYOUTS ARE AS VIEWED FROM TOP OF PCB.

THIS DRAWING IS A CONTROLLED DOCUMENT.		DWN C SCHOLL 29 OCT 04		 Tyco Electronics Corporation Harrisburg, PA 17105	
		CHK M. STORRY 29 OCT 04			
DIMENSIONS: INCHES		TOLERANCES UNLESS OTHERWISE SPECIFIED:		NAME RECEPTACLE ASSEMBLY, HORIZONTAL MOUNT, THROUGH HOLE, 2 TO 4 ROW, .050 SPACING, PLASTIC OR METAL	
		APVD —			
		PRODUCT SPEC —			
		APPLICATION SPEC —			
		0 PLC ± — 1 PLC ± — 2 PLC ± .010 3 PLC ± .005 4 PLC ± — ANGLES ± ± 1			
MATERIAL SEE NOTES		FINISH SEE NOTES		WEIGHT — SIZE A2 CAGE CODE OPJN9 DRAWING NO C-1589898 RESTRICTED TO —	
CUSTOMER DRAWING				SCALE 8:1 SHEET 2 of 2 REV D	

Mouser Electronics

Authorized Distributor

Click to View Pricing, Inventory, Delivery & Lifecycle Information:

[TE Connectivity:](#)

[2-1589681-1](#)