



SIZE	A DIM	B DIM	C DIM $\pm .0050$	(L DIM)
09	.050	.229	.3085	(.100)
15	.0875	.304	.3835	(.175)
25	.150	.429	.5085	(.300)
37	.225	.579	.6585	(.450)
51	.3125	.754	.8335	(.625)
65	.400	.929	1.0085	(.800)

1. SHELL OPTIONS (TO BE SPECIFIED IN NANONICS PART NUMBER):  
 METAL: 6061-T6 ALUMINUM, ELECTROLESS NICKEL PLATED PER MIL-C-26074 (STANDARD) OR GOLD PLATED PER MIL-G-45204  
 303 STAINLESS STEEL, PASSIVATED PER SAE-AMS-QQ-P-35  
 INSULATOR MATERIAL FOR ALL METAL SHELLS IS LIQUID CRYSTAL POLYMER (LCP) PER MIL-M-24519 OR PER ASTM D5138  
 PLASTIC: LIQUID CRYSTAL POLYMER (LCP) PER MIL-M-24519 OR PER ASTM D5138
  2. STANDARD 1.0 X 0.25mm MOUNTING AND JACKSCREW THREADS ARE SHOWN FOR REFERENCE ONLY AND MUST BE SPECIFIED IN THE NANONICS PART NUMBER WHEN REQUIRED. 1.2 X 0.25mm THREADS ALSO AVAILABLE.
  3. MOUNTING HARDWARE IS AVAILABLE WITH THIS CONFIGURATION (NOT SHOWN). HARDWARE MUST BE SPECIFIED IN THE NANONICS PART NUMBER. CONSULT TYCO ELECTRONICS FOR DETAILS.
  4. SMT LEADS ARE BeCu, GOLD PLATED PER MIL-G-45204 OVER NICKEL PLATE PER SAE-AMS-QQ-N-290
  5. NANONICS TERMINATION CODE: T2
  6. THIS DRAWING PREVIOUSLY IDENTIFIED AS NANONICS N10138/270

THIS DRAWING IS A CONTROLLED DOCUMENT.		DWN C. SCHOLL		6 AUG 03		 Tyco Electronics Corporation Harrisburg, PA 17105	
		CHK M. STORRY		6 AUG 03			
DIMENSIONS: INCHES		TOLERANCES UNLESS OTHERWISE SPECIFIED:		APVD —		NAME RECEPTACLE ASSEMBLY, HORIZONTAL SURFACE MOUNT, TWO ROW DUALOBE, GOLD PLATED LEADS, PLASTIC OR METAL	
		0 PLC ± — 1 PLC ± — 2 PLC ± .010 3 PLC ± .005 4 PLC ± — ANGLES ± 1		PRODUCT SPEC —			
		APPLICATION SPEC —		SIZE A2			
MATERIAL SEE NOTES		FINISH SEE NOTES		WEIGHT —		GAGE CODE 00779	
						DRAWING NO C-1589815	
						RESTRICTED TO —	
CUSTOMER DRAWING						SCALE 8:1	
						SHEET 1 OF 2	
						REV B	

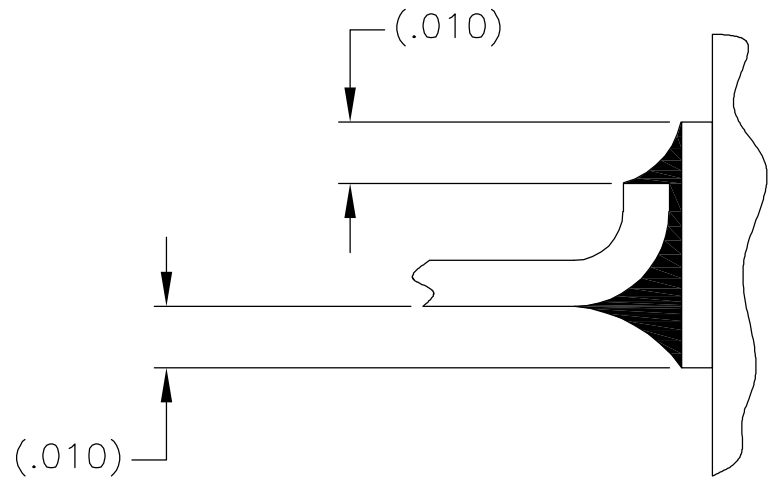
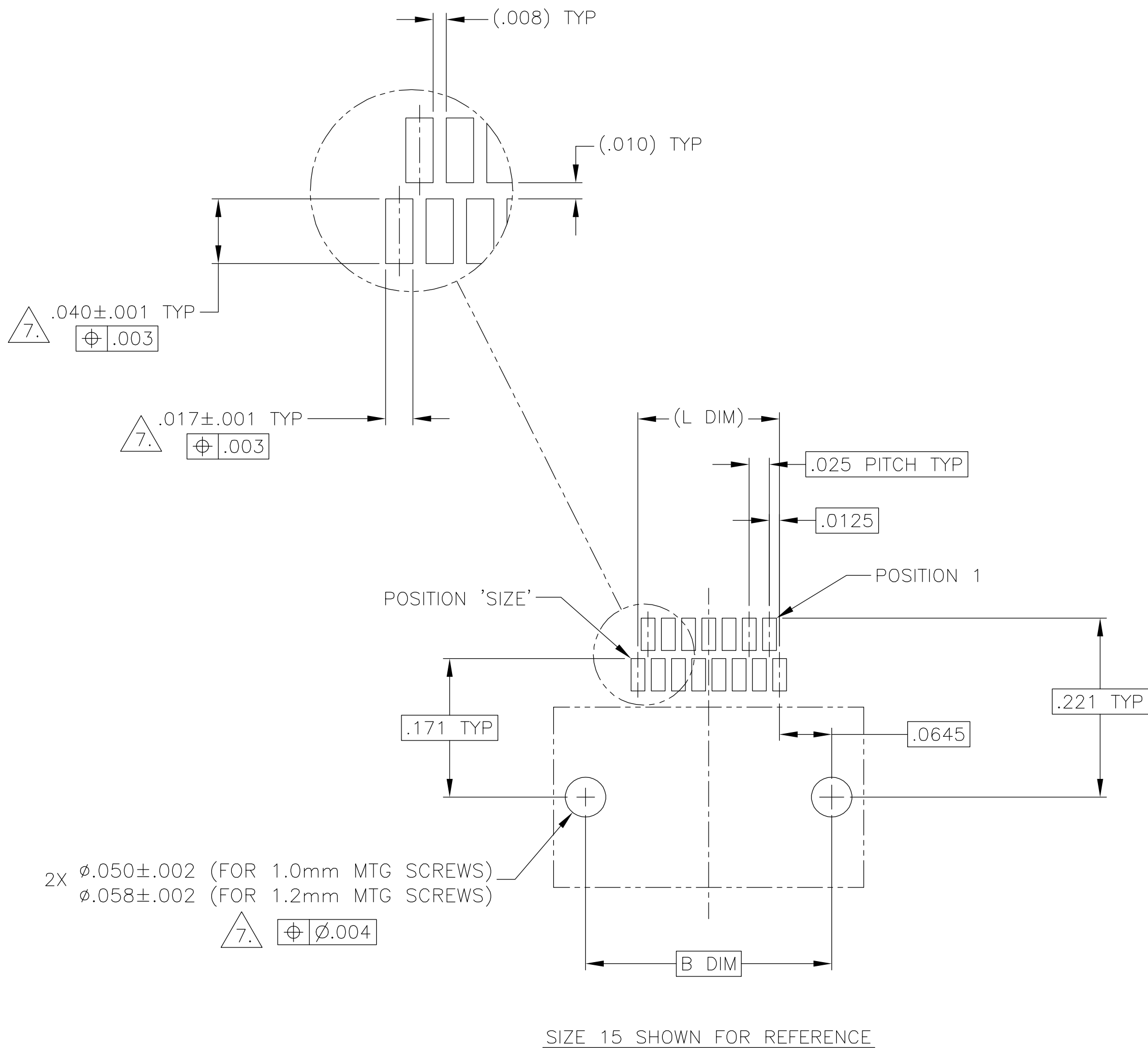
A

THIS DRAWING IS UNPUBLISHED.

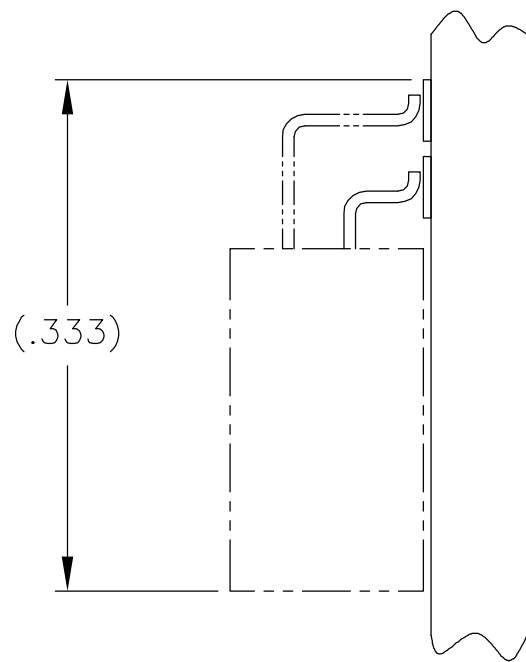
RELEASED FOR PUBLICATION

© COPYRIGHT - BY TYCO ELECTRONICS CORPORATION. ALL RIGHTS RESERVED.

LOC	DIST	REVISIONS					
		P	LTR	DESCRIPTION	DATE	DWN	APVD
DF	D0		B	UPDATE PER 0H2Y-0164-04	12 MAY 04	CAS	MKS



TYPICAL FOOT PLACEMENT  
ON SOLDER PAD



TYPICAL PCB LAYOUT

7. POSITIONAL TOLERANCES FOR BASIC DIMENSIONED FEATURES ARE RELATIVE TO FIDUCIALS OR SOME SIMILAR DATUM REFERENCE DEFINED BY THE PCB DESIGNER.

THIS DRAWING IS A CONTROLLED DOCUMENT.		DWN C. SCHOLL 6 AUG 03	<b>tyco</b> <b>Electronics</b> Tyco Electronics Corporation Harrisburg, PA 17105			
DIMENSIONS: INCHES		CHK M. STORRY 6 AUG 03	NAME			
	TOLERANCES UNLESS OTHERWISE SPECIFIED:  0 PLC ± - 1 PLC ± - 2 PLC ± - 3 PLC ± - 4 PLC ± - ANGLES ± -	APVD -	RECEPTACLE ASSEMBLY, HORIZONTAL SURFACE			
		PRODUCT SPEC -	MOUNT, TWO ROW DUALLOBE, GOLD			
		APPLICATION SPEC -	PLATED LEADS, PLASTIC OR METAL			
		-	SIZE	CAGE CODE	DRAWING NO	RESTRICTED TO
MATERIAL -	FINISH -	WEIGHT -	A2	00779	C=1589815	-
CUSTOMER DRAWING			SCALE 8:1	SHEET 2 OF 2	REV B	

# Mouser Electronics

Authorized Distributor

Click to View Pricing, Inventory, Delivery & Lifecycle Information:

[TE Connectivity:](#)

[2-1589815-1](#)