



| SIZE | A DIM | B DIM | C DIM $\pm .0050$ | (L DIM) |
|------|-------|-------|----------------------|---------|
| 09 | .050 | .229 | .3085 | (.100) |
| 15 | .0875 | .304 | .3835 | (.175) |
| 25 | .150 | .429 | .5085 | (.300) |
| 37 | .225 | .579 | .6585 | (.450) |
| 51 | .3125 | .754 | .8335 | (.625) |
| 65 | .400 | .929 | 1.0085 | (.800) |

1. SHELL OPTIONS (TO BE SPECIFIED IN NANONICS PART NUMBER):
 METAL: 6061-T6 ALUMINUM, ELECTROLESS NICKEL PLATED PER MIL-C-26074 (STANDARD) OR GOLD PLATED PER MIL-G-45204
 303 STAINLESS STEEL, PASSIVATED PER SAE-AMS-QQ-P-35
 INSULATOR MATERIAL FOR ALL METAL SHELLS IS LIQUID CRYSTAL POLYMER (LCP) PER MIL-M-24519 OR PER ASTM D5138
 PLASTIC: LIQUID CRYSTAL POLYMER (LCP) PER MIL-M-24519 OR PER ASTM D5138
 2. STANDARD 1.0 X 0.25mm MOUNTING AND JACKSCREW THREADS ARE SHOWN FOR REFERENCE ONLY AND MUST BE SPECIFIED IN THE NANONICS PART NUMBER WHEN REQUIRED. 1.2 X 0.25mm THREADS ALSO AVAILABLE.
 3. MOUNTING HARDWARE IS AVAILABLE WITH THIS CONFIGURATION (NOT SHOWN). HARDWARE MUST BE SPECIFIED IN THE NANONICS PART NUMBER. CONSULT TYCO ELECTRONICS FOR DETAILS.
 4. SMT LEADS ARE BeCu, GOLD PLATED PER MIL-G-45204 OVER NICKEL PLATE PER SAE-AMS-QQ-N-290
 5. NANONICS TERMINATION CODE: T2
 6. THIS DRAWING PREVIOUSLY IDENTIFIED AS NANONICS N10138/270

| | | | | | | | | | | |
|---|--|---|--|------------------|--|--|------------|---------------|--------------|-------|
| THIS DRAWING IS A CONTROLLED DOCUMENT. | | DWN C. SCHOLL | | 6 AUG 03 | |  Tyco Electronics Corporation Harrisburg, PA 17105 | | | | |
| | | CHK M. STORRY | | 6 AUG 03 | | | | | | |
| DIMENSIONS: INCHES | | TOLERANCES UNLESS OTHERWISE SPECIFIED: | | APVD — | | NAME | | | | |
|  | | 0 PLC ± — | | PRODUCT SPEC | | RECEPTACLE ASSEMBLY, HORIZONTAL SURFACE MOUNT, TWO ROW DUALOBE, GOLD PLATED LEADS, PLASTIC OR METAL | | | | |
| | | 1 PLC ± — | | — | | | | | | |
| | | 2 PLC ± .010 | | APPLICATION SPEC | | | | | | |
| | | 3 PLC ± .005 | | — | | | | | | |
| 4 PLC ± — | | ANGLES ± 1 | | SIZE | | CAGE CODE | DRAWING NO | RESTRICTED TO | | |
| MATERIAL | | FINISH | | WEIGHT | | A2 00779 C-1589815 | | — | | |
| SEE NOTES | | SEE NOTES | | CUSTOMER DRAWING | | | | SCALE 8:1 | SHEET 1 OF 2 | REV B |

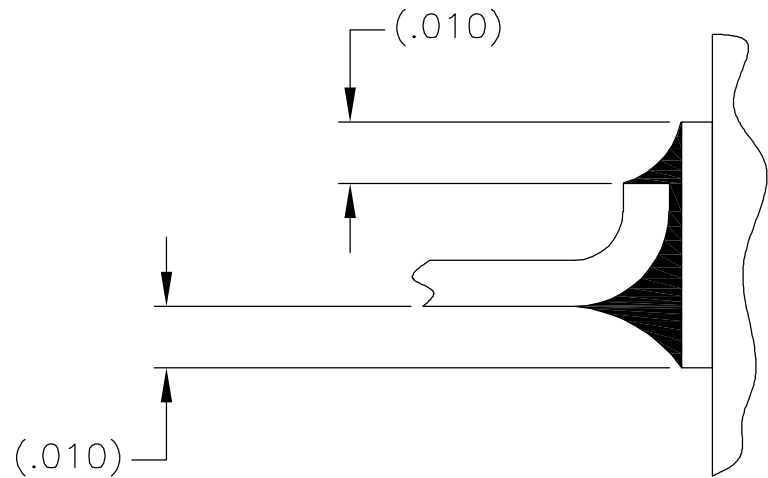
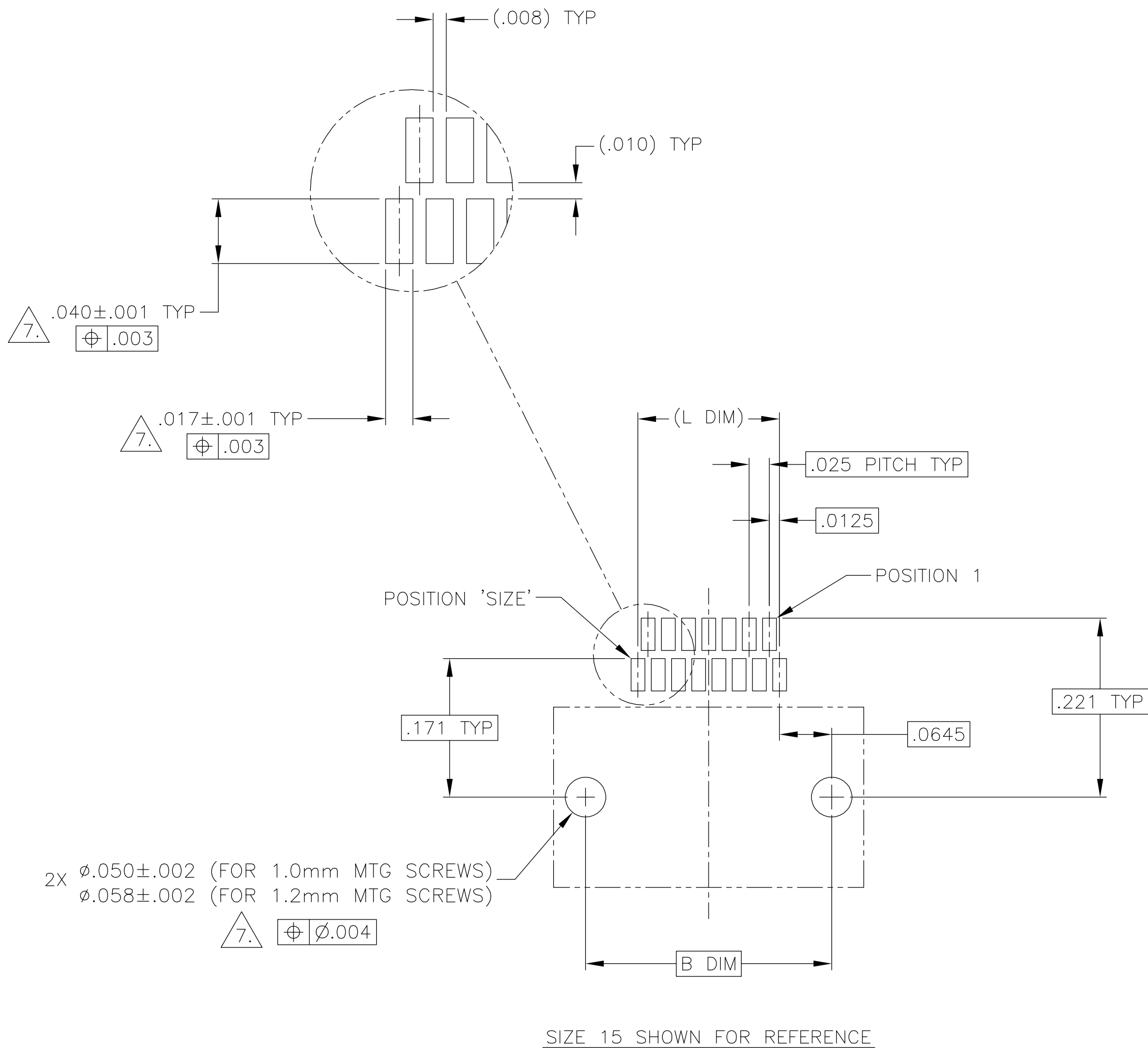
A

THIS DRAWING IS UNPUBLISHED.

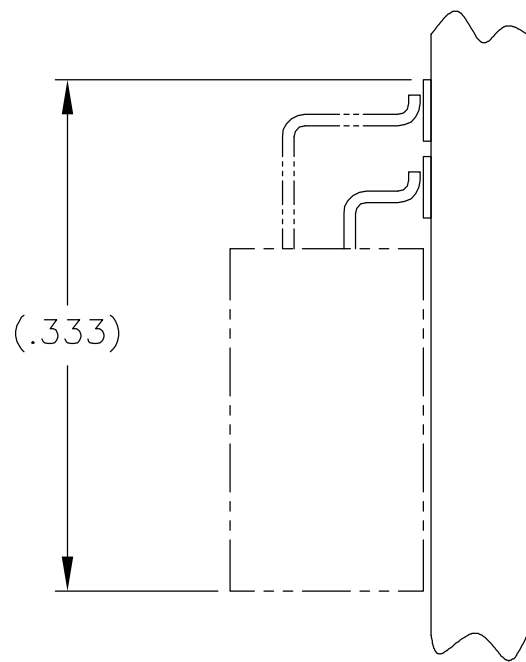
RELEASED FOR PUBLICATION

© COPYRIGHT - BY TYCO ELECTRONICS CORPORATION. ALL RIGHTS RESERVED.

| LOC | DIST | REVISIONS | | | | | |
|-----|------|-----------|-----|-------------------------|-----------|-----|------|
| | | P | LTR | DESCRIPTION | DATE | DWN | APVD |
| DF | D0 | | B | UPDATE PER 0H2Y-0164-04 | 12 MAY 04 | CAS | MKS |



TYPICAL FOOT PLACEMENT
ON SOLDER PAD



TYPICAL PCB LAYOUT

$\triangle 7.$ POSITIONAL TOLERANCES FOR BASIC DIMENSIONED FEATURES ARE RELATIVE TO FIDUCIALS OR SOME SIMILAR DATUM REFERENCE DEFINED BY THE PCB DESIGNER.

THIS DRAWING IS A CONTROLLED DOCUMENT.

DIMENSIONS:
INCHES

MATERIAL
-

TOLERANCES UNLESS OTHERWISE SPECIFIED:

0 PLC ± -
1 PLC ± -
2 PLC ± -
3 PLC ± -
4 PLC ± -
ANGLES ± -
FINISH -

DWN
C. SCHOLL
6 AUG 03

CHK
M. STORRY
6 AUG 03

APVD
-

PRODUCT SPEC
-

APPLICATION SPEC
-

WEIGHT
-

CUSTOMER DRAWING

tyco
Electronics

Tyco Electronics Corporation
Harrisburg, PA 17105

NAME
RECEPTACLE ASSEMBLY, HORIZONTAL SURFACE
MOUNT, TWO ROW DUALLOBE, GOLD
PLATED LEADS, PLASTIC OR METAL

SIZE
A2

CAGE CODE
00779

DRAWING NO
C=1589815

RESTRICTED TO
-

SCALE
8:1

SHEET
2

OF
2

REV
B

Mouser Electronics

Authorized Distributor

Click to View Pricing, Inventory, Delivery & Lifecycle Information:

[TE Connectivity:](#)

[1-1589815-3](#)