



SIZE	A DIM	B DIM	C DIM $\pm .0050$	(L DIM)
09	.050	.229	.3085	(.100)
15	.0875	.304	.3835	(.175)
25	.150	.429	.5085	(.300)
37	.225	.579	.6585	(.450)
51	.3125	.754	.8335	(.625)
65	.400	.929	1.0085	(.800)

1. SHELL OPTIONS (TO BE SPECIFIED IN NANONICS PART NUMBER):
 METAL: 6061-T6 ALUMINUM, ELECTROLESS NICKEL PLATED PER MIL-C-26074 (STANDARD) OR GOLD PLATED PER MIL-G-45204
 303 STAINLESS STEEL, PASSIVATED PER SAE-AMS-QQ-P-35
 INSULATOR MATERIAL FOR ALL METAL SHELLS IS LIQUID CRYSTAL POLYMER (LCP) PER MIL-M-24519 OR PER ASTM D5138
 PLASTIC: LIQUID CRYSTAL POLYMER (LCP) PER MIL-M-24519 OR PER ASTM D5138
 2. STANDARD 1.0 X 0.25mm MOUNTING AND JACKSCREW THREADS ARE SHOWN FOR REFERENCE ONLY AND MUST BE SPECIFIED IN THE NANONICS PART NUMBER WHEN REQUIRED. 1.2 X 0.25mm THREADS ALSO AVAILABLE.
 3. MOUNTING HARDWARE IS AVAILABLE WITH THIS CONFIGURATION (NOT SHOWN). HARDWARE MUST BE SPECIFIED IN THE NANONICS PART NUMBER. CONSULT TYCO ELECTRONICS FOR DETAILS.
 4. SMT LEADS ARE BeCu, GOLD PLATED PER MIL-G-45204 OVER NICKEL PLATE PER SAE-AMS-QQ-N-290
 5. NANONICS TERMINATION CODE: T2
 6. THIS DRAWING PREVIOUSLY IDENTIFIED AS NANONICS N10138/270

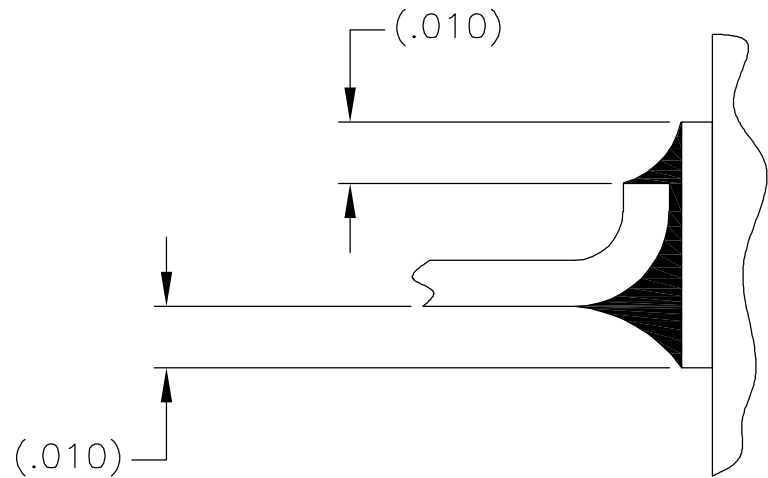
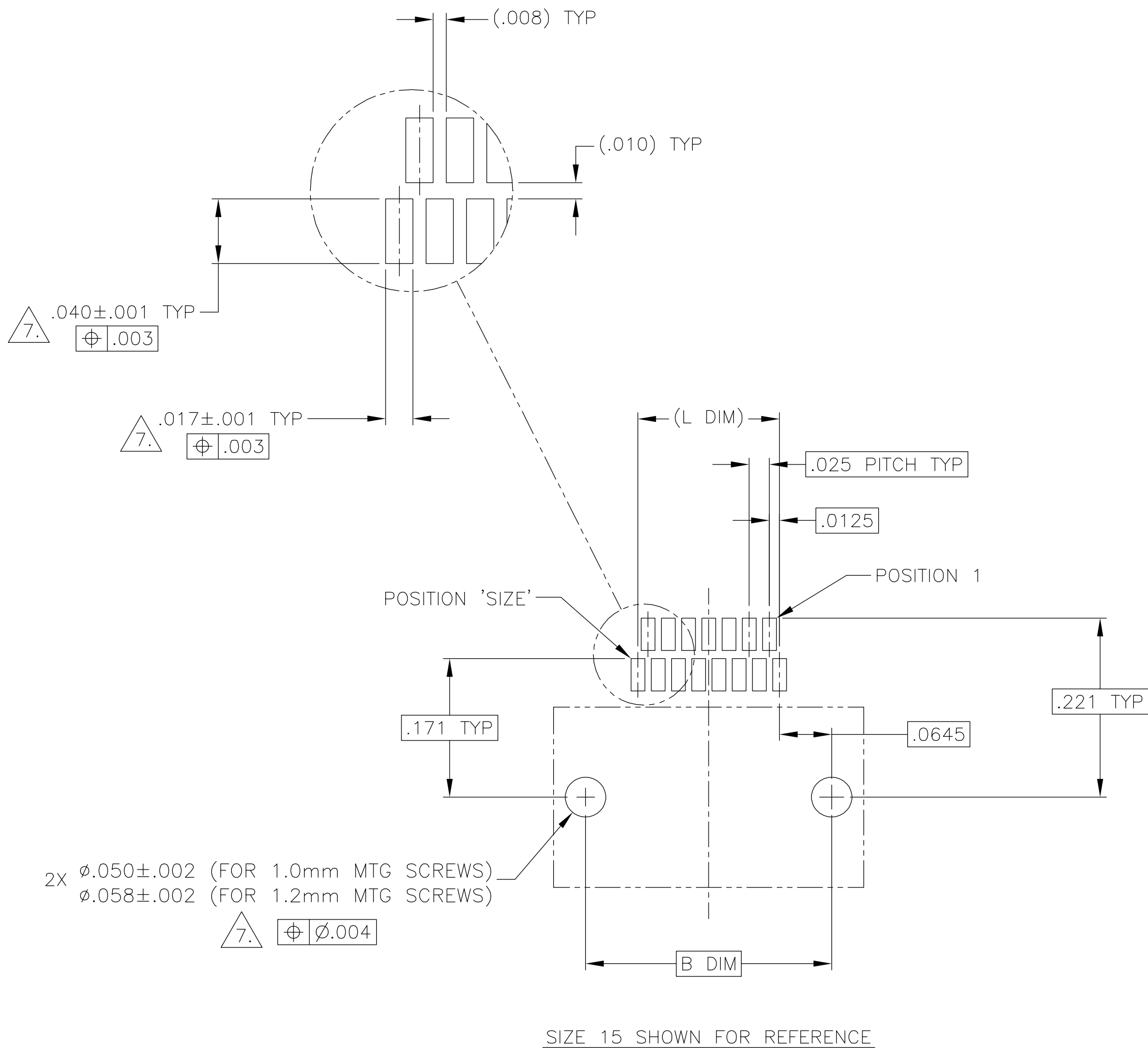
THIS DRAWING IS A CONTROLLED DOCUMENT.		DWN C. SCHOLL		6 AUG 03		 Tyco Electronics Corporation Harrisburg, PA 17105	
		CHK M. STORRY		6 AUG 03			
DIMENSIONS: INCHES		TOLERANCES UNLESS OTHERWISE SPECIFIED:		APVD —		NAME	
		0 PLC ± —		PRODUCT SPEC		RECEPTACLE ASSEMBLY, HORIZONTAL SURFACE MOUNT, TWO ROW DUALOBE, GOLD PLATED LEADS, PLASTIC OR METAL	
		1 PLC ± —		—			
		2 PLC ± .010		APPLICATION SPEC			
		3 PLC ± .005		—			
4 PLC ± —		ANGLES ± 1		SIZE		RESTRICTED TO	
MATERIAL		FINISH		WEIGHT		CAGE CODE	
SEE NOTES		SEE NOTES		—		DRAWING NO	
				A2		00779	
				CUSTOMER DRAWING		C-1589815	
						SCALE 8:1	
						SHEET 1 OF 2	
						REV B	

THIS DRAWING IS UNPUBLISHED.

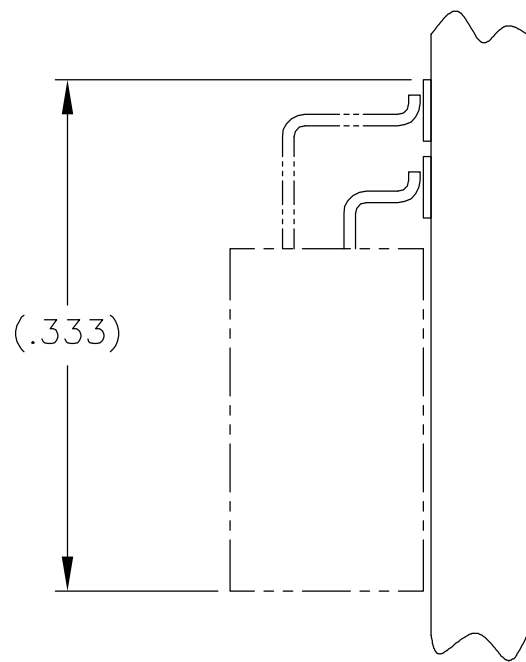
RELEASED FOR PUBLICATION

© COPYRIGHT - BY TYCO ELECTRONICS CORPORATION. ALL RIGHTS RESERVED.

LOC	DIST	REVISIONS					
		P	LTR	DESCRIPTION	DATE	DWN	APVD
DF	D0		B	UPDATE PER 0H2Y-0164-04	12 MAY 04	CAS	MKS



TYPICAL FOOT PLACEMENT
ON SOLDER PAD



TYPICAL PCB LAYOUT

$\triangle 7.$ POSITIONAL TOLERANCES FOR BASIC DIMENSIONED FEATURES ARE RELATIVE TO FIDUCIALS OR SOME SIMILAR DATUM REFERENCE DEFINED BY THE PCB DESIGNER.

THIS DRAWING IS A CONTROLLED DOCUMENT.		DWN C. SCHOLL 6 AUG 03	tyco Electronics Tyco Electronics Corporation Harrisburg, PA 17105					
		CHK M. STORRY 6 AUG 03						
DIMENSIONS: INCHES	TOLERANCES UNLESS OTHERWISE SPECIFIED:	APVD —	NAME					
	0 PLC ± —	PRODUCT SPEC —	RECEPTACLE ASSEMBLY, HORIZONTAL SURFACE MOUNT, TWO ROW DUALLOBE, GOLD PLATED LEADS, PLASTIC OR METAL					
	1 PLC ± —	—						
	2 PLC ± —	—						
	3 PLC ± —	—						
	4 PLC ± —	APPLICATION SPEC —	SIZE	CAGE CODE	DRAWING NO	RESTRICTED TO		
MATERIAL —	FINISH —	WEIGHT —	A2	00779	C=1589815	—		
CUSTOMER DRAWING			SCALE	8:1	SHEET	2 OF 2	REV	B

Mouser Electronics

Authorized Distributor

Click to View Pricing, Inventory, Delivery & Lifecycle Information:

[TE Connectivity:](#)

[1589815-8](#)