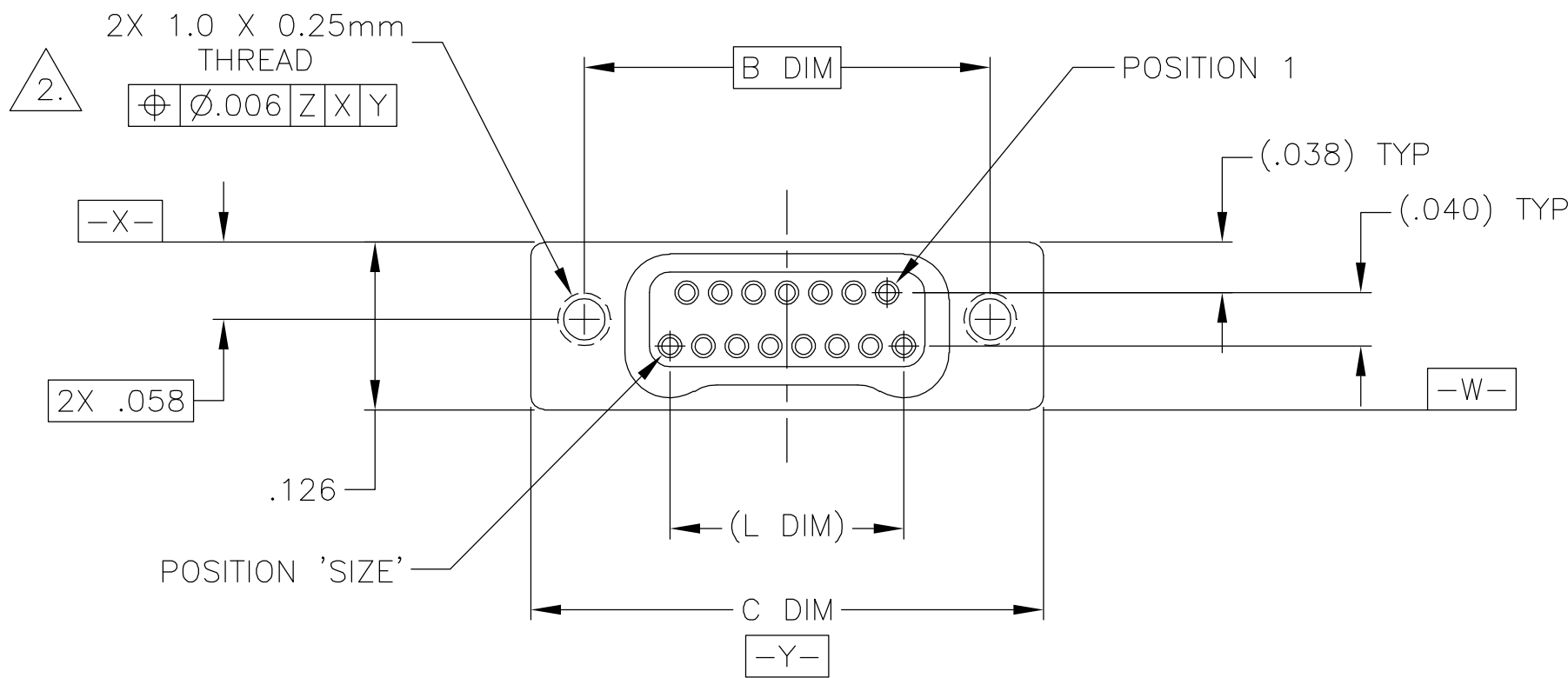
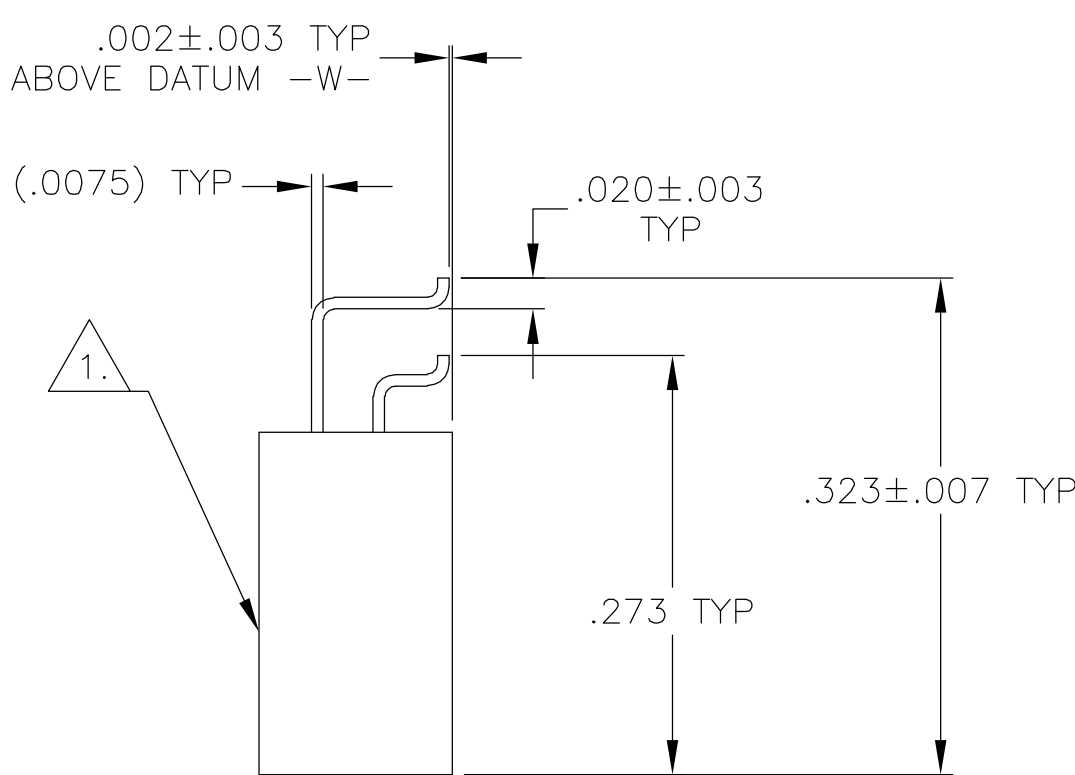
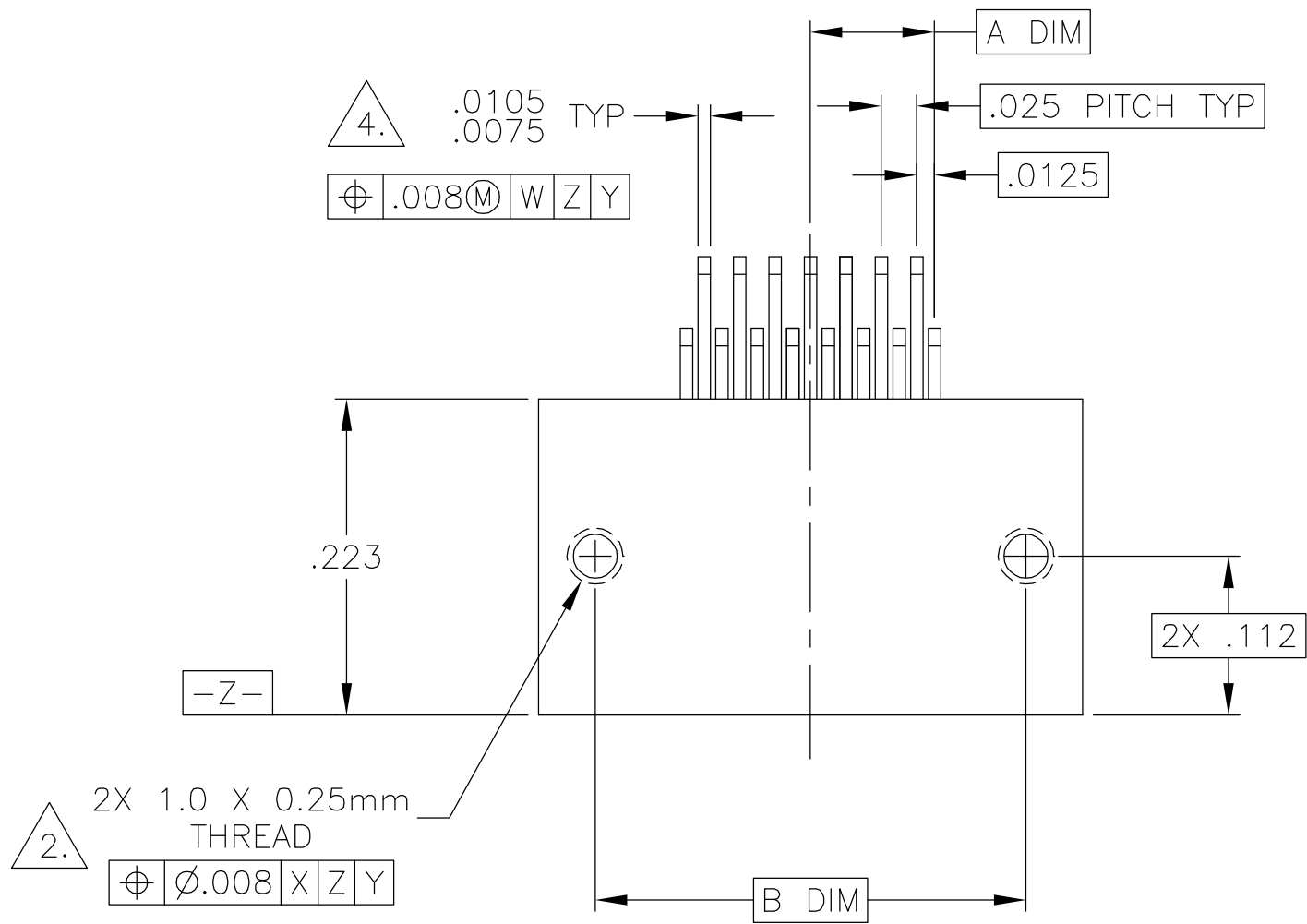


LOC	DIST	REVISIONS				
DF	D0	P	LTR	DESCRIPTION	DATE	APVD
			B	UPDATE PER 0H2Y-0164-04	12 MAY 04	CAS



SIZE	A DIM	B DIM	C DIM ±.0050	(L DIM)
09	.050	.229	.3085	(.100)
15	.0875	.304	.3835	(.175)
25	.150	.429	.5085	(.300)
37	.225	.579	.6585	(.450)
51	.3125	.754	.8335	(.625)
65	.400	.929	1.0085	(.800)

1. SHELL OPTIONS (TO BE SPECIFIED IN NANONICS PART NUMBER):  
METAL: 6061-T6 ALUMINUM, ELECTROLESS NICKEL PLATED PER MIL-C-26074 (STANDARD) OR GOLD PLATED PER MIL-G-45204  
303 STAINLESS STEEL, PASSIVATED PER SAE-AMS-QQ-P-35  
INSULATOR MATERIAL FOR ALL METAL SHELLS IS LIQUID CRYSTAL POLYMER (LCP) PER MIL-M-24519 OR PER ASTM D5138  
PLASTIC: LIQUID CRYSTAL POLYMER (LCP) PER MIL-M-24519 OR PER ASTM D5138
2. STANDARD 1.0 X 0.25mm MOUNTING AND JACKSCREW THREADS ARE SHOWN FOR REFERENCE ONLY AND MUST BE SPECIFIED IN THE NANONICS PART NUMBER WHEN REQUIRED. 1.2 X 0.25mm THREADS ALSO AVAILABLE.
3. MOUNTING HARDWARE IS AVAILABLE WITH THIS CONFIGURATION (NOT SHOWN). HARDWARE MUST BE SPECIFIED IN THE NANONICS PART NUMBER. CONSULT TYCO ELECTRONICS FOR DETAILS.
4. SMT LEADS ARE BeCu, GOLD PLATED PER MIL-G-45204 OVER NICKEL PLATE PER SAE-AMS-QQ-N-290
5. NANONICS TERMINATION CODE: T2
6. THIS DRAWING PREVIOUSLY IDENTIFIED AS NANONICS N10138/270

THIS DRAWING IS A CONTROLLED DOCUMENT.

DIMENSIONS:  
INCHES

MATERIAL  
SEE NOTES

TOLERANCES UNLESS OTHERWISE SPECIFIED:

0 PLC	±	-
1 PLC	±	-
2 PLC	±	.010
3 PLC	±	.005
4 PLC	±	-
ANGLES	±	1

FINISH  
SEE NOTES

DWN  
C. SCHOLL  
6 AUG 03

CHK  
M. STORRY  
6 AUG 03

APVD  
-

PRODUCT SPEC  
-

APPLICATION SPEC  
-

WEIGHT  
-

CUSTOMER DRAWING

Tyco Electronics Corporation  
Harrisburg, PA 17105

NAME  
RECEPTACLE ASSEMBLY, HORIZONTAL SURFACE  
MOUNT, TWO ROW DUALLOBE, GOLD  
PLATED LEADS, PLASTIC OR METAL

SIZE  
A2

CAGE CODE  
00779

DRAWING NO  
C=1589815

RESTRICTED TO  
-

SCALE  
8:1

SHEET  
1

OF  
2

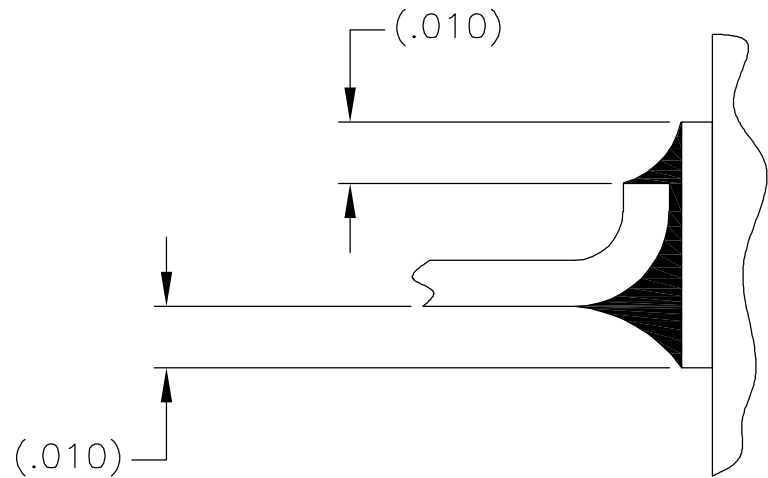
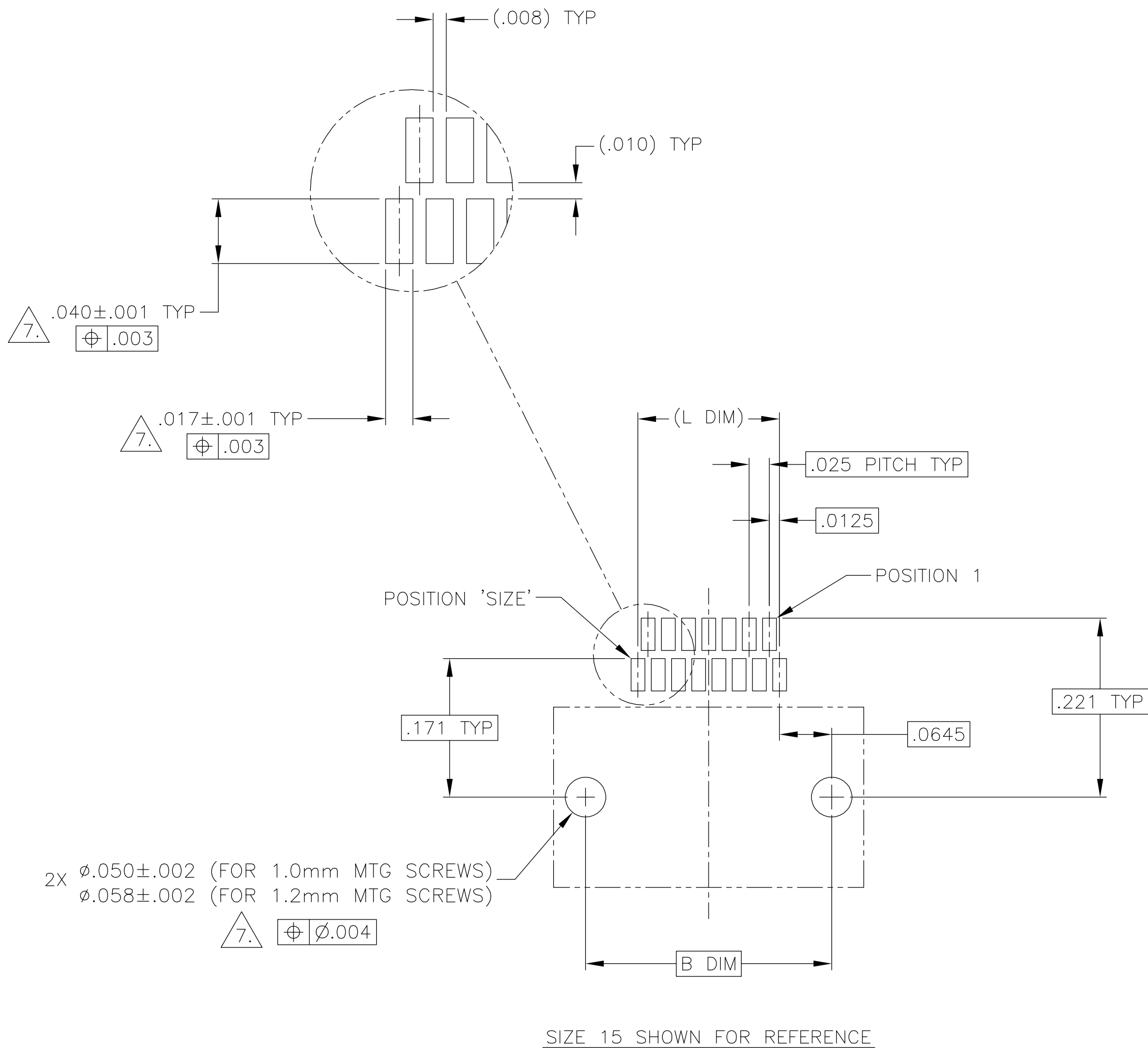
REV  
B

THIS DRAWING IS UNPUBLISHED.

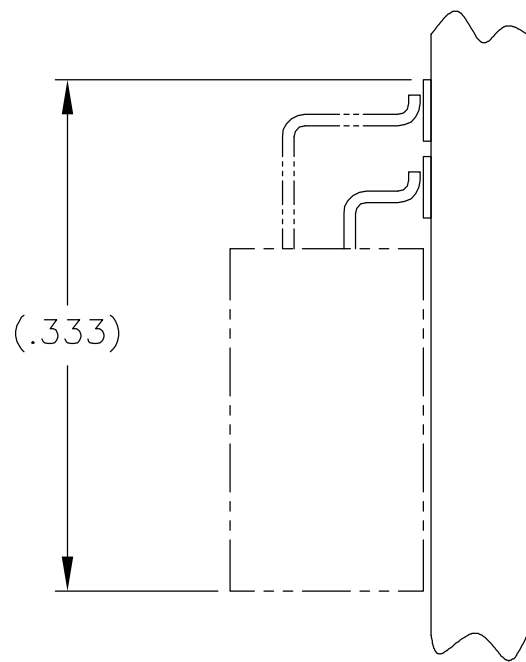
RELEASED FOR PUBLICATION

© COPYRIGHT - BY TYCO ELECTRONICS CORPORATION. ALL RIGHTS RESERVED.

LOC	DIST	REVISIONS					
		P	LTR	DESCRIPTION	DATE	DWN	APVD
DF	D0		B	UPDATE PER 0H2Y-0164-04	12 MAY 04	CAS	MKS



TYPICAL FOOT PLACEMENT  
ON SOLDER PAD



TYPICAL PCB LAYOUT

$\triangle 7.$  POSITIONAL TOLERANCES FOR BASIC DIMENSIONED FEATURES ARE RELATIVE TO FIDUCIALS OR SOME SIMILAR DATUM REFERENCE DEFINED BY THE PCB DESIGNER.

THIS DRAWING IS A CONTROLLED DOCUMENT.		DWN C. SCHOLL 6 AUG 03	<b>tyco</b> <b>Electronics</b> Tyco Electronics Corporation Harrisburg, PA 17105				
		CHK M. STORRY 6 AUG 03					
DIMENSIONS: INCHES	TOLERANCES UNLESS OTHERWISE SPECIFIED:	APVD —	NAME				
	0 PLC ± —	PRODUCT SPEC	RECEPTACLE ASSEMBLY, HORIZONTAL SURFACE MOUNT, TWO ROW DUALLOBE, GOLD PLATED LEADS, PLASTIC OR METAL				
	1 PLC ± —	—					
	2 PLC ± —	—					
	3 PLC ± —	APPLICATION SPEC					
	4 PLC ± —	—	SIZE	CAGE CODE	DRAWING NO	RESTRICTED TO	
MATERIAL	FINISH	WEIGHT	A2	00779	C=1589815	—	
		CUSTOMER DRAWING			SCALE 8:1	SHEET 2 OF 2	REV B

# Mouser Electronics

Authorized Distributor

Click to View Pricing, Inventory, Delivery & Lifecycle Information:

[TE Connectivity:](#)

[1589815-1](#)