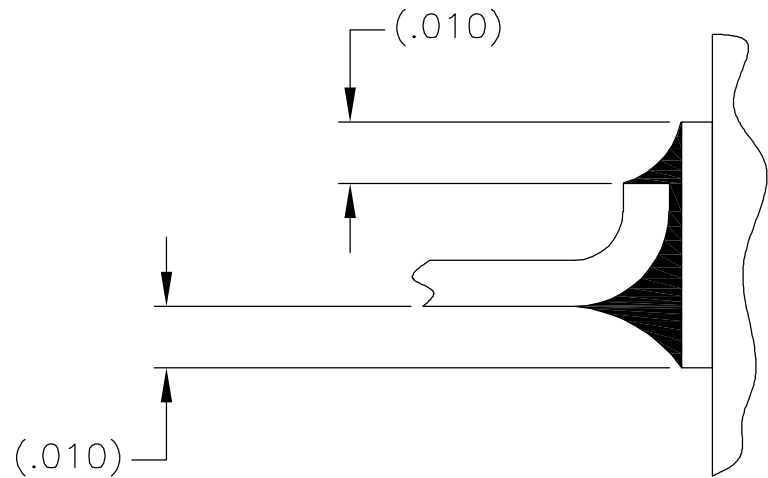
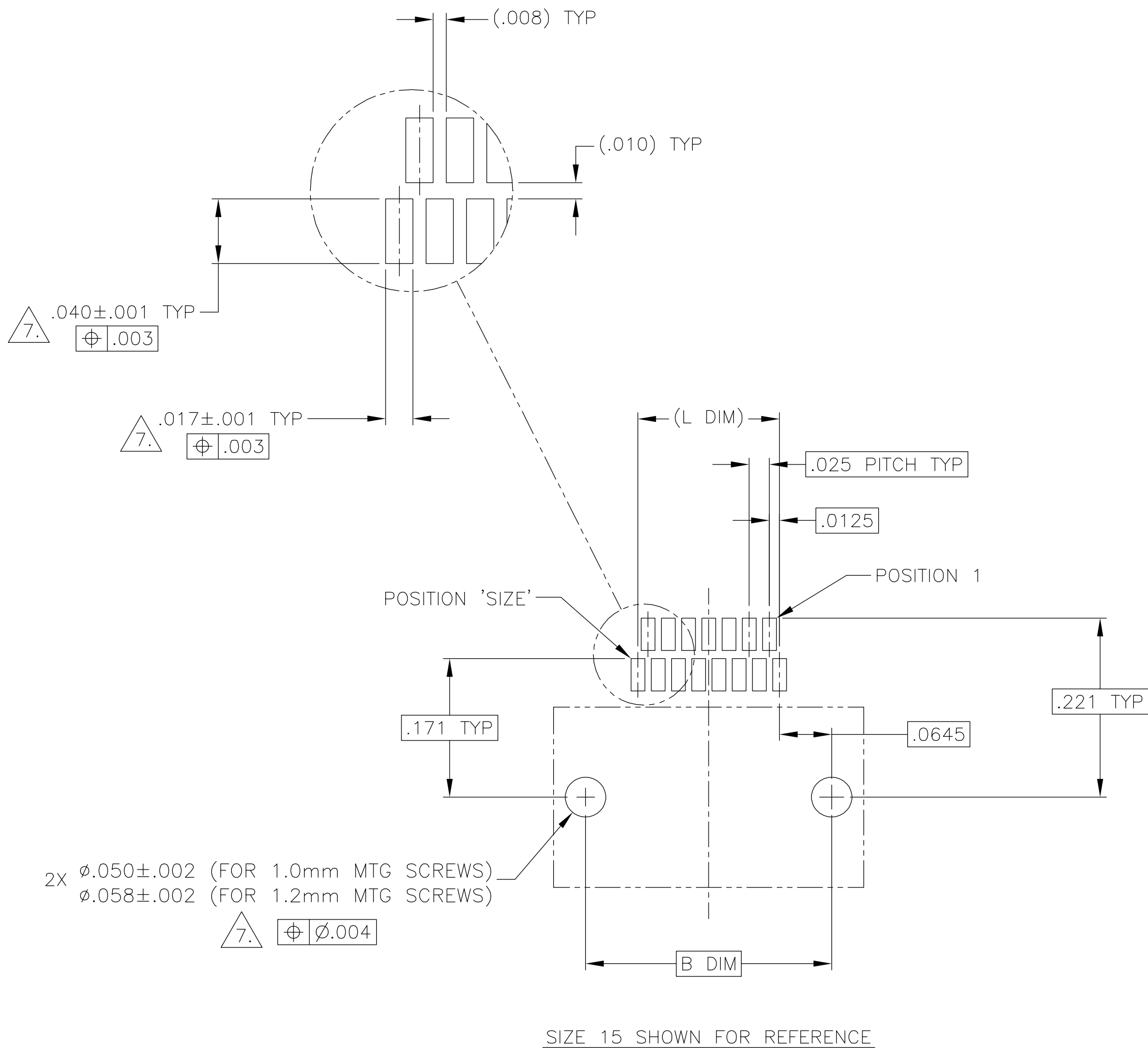


THIS DRAWING IS UNPUBLISHED.

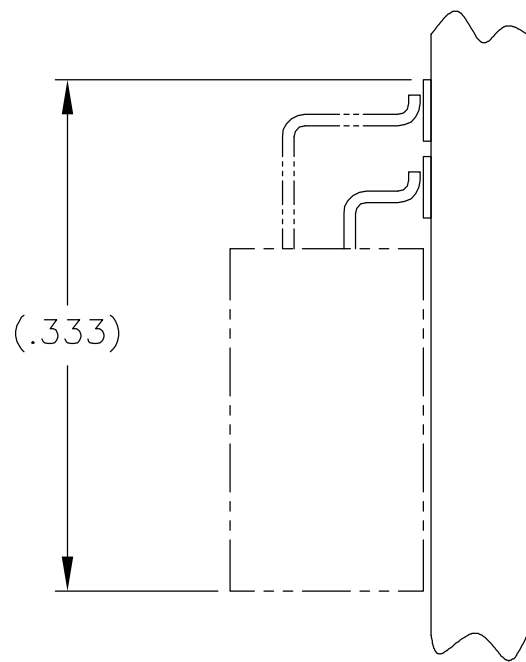
RELEASED FOR PUBLICATION

© COPYRIGHT - BY TYCO ELECTRONICS CORPORATION. ALL RIGHTS RESERVED.

LOC	DIST	REVISIONS				
DF	D0	P	LTR	DESCRIPTION	DATE	DWN APVD
		B		UPDATE PER 0H2Y-0164-04	12 MAY 04	CAS MKS



TYPICAL FOOT PLACEMENT
ON SOLDER PAD



TYPICAL PCB LAYOUT

$\triangle 7.$ POSITIONAL TOLERANCES FOR BASIC DIMENSIONED FEATURES ARE RELATIVE TO FIDUCIALS OR SOME SIMILAR DATUM REFERENCE DEFINED BY THE PCB DESIGNER.

THIS DRAWING IS A CONTROLLED DOCUMENT.		DWN C. SCHOLL 6 AUG 03	tyco Electronics Tyco Electronics Corporation Harrisburg, PA 17105			
DIMENSIONS: INCHES		CHK M. STORRY 6 AUG 03				
	TOLERANCES UNLESS OTHERWISE SPECIFIED:	APVD —	NAME			
		PRODUCT SPEC —	RECEPTACLE ASSEMBLY, HORIZONTAL SURFACE MOUNT, TWO ROW DUALLOBE, GOLD PLATED LEADS, PLASTIC OR METAL			
		APPLICATION SPEC —				
MATERIAL —	FINISH —	WEIGHT —	SIZE A2	CAGE CODE 00779	DRAWING NO C=1589815	RESTRICTED TO —
		CUSTOMER DRAWING	SCALE 8:1	SHEET 2	OF 2	REV B

Mouser Electronics

Authorized Distributor

Click to View Pricing, Inventory, Delivery & Lifecycle Information:

[TE Connectivity:](#)

[1589815-4](#)