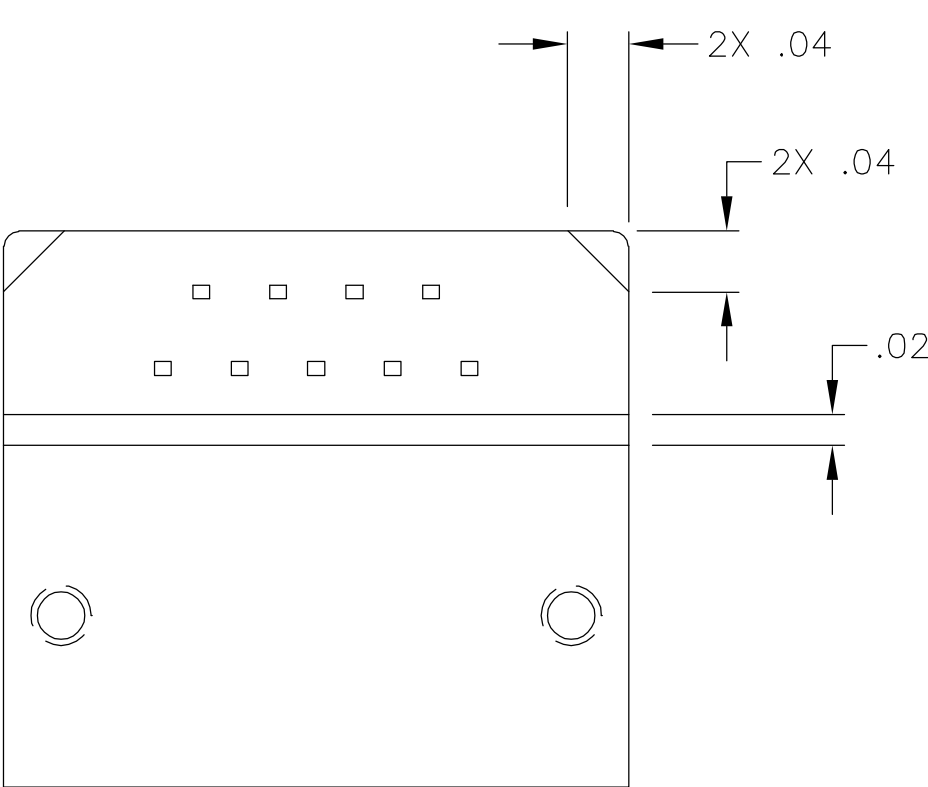
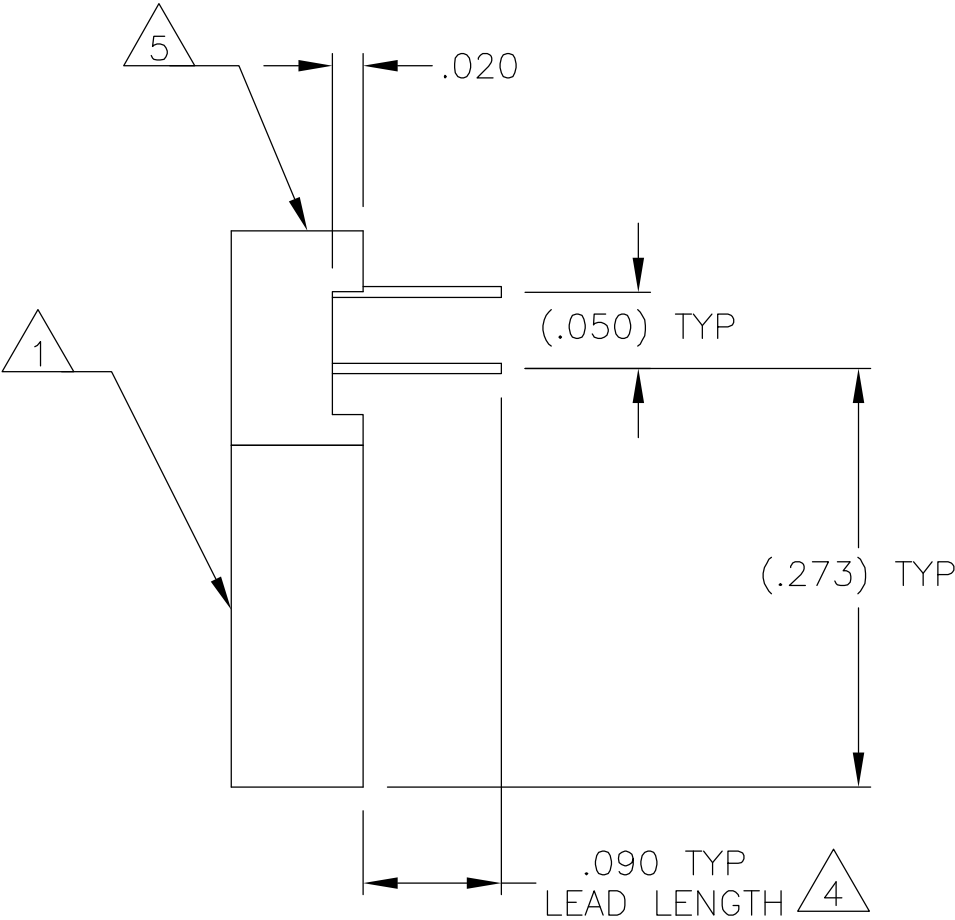
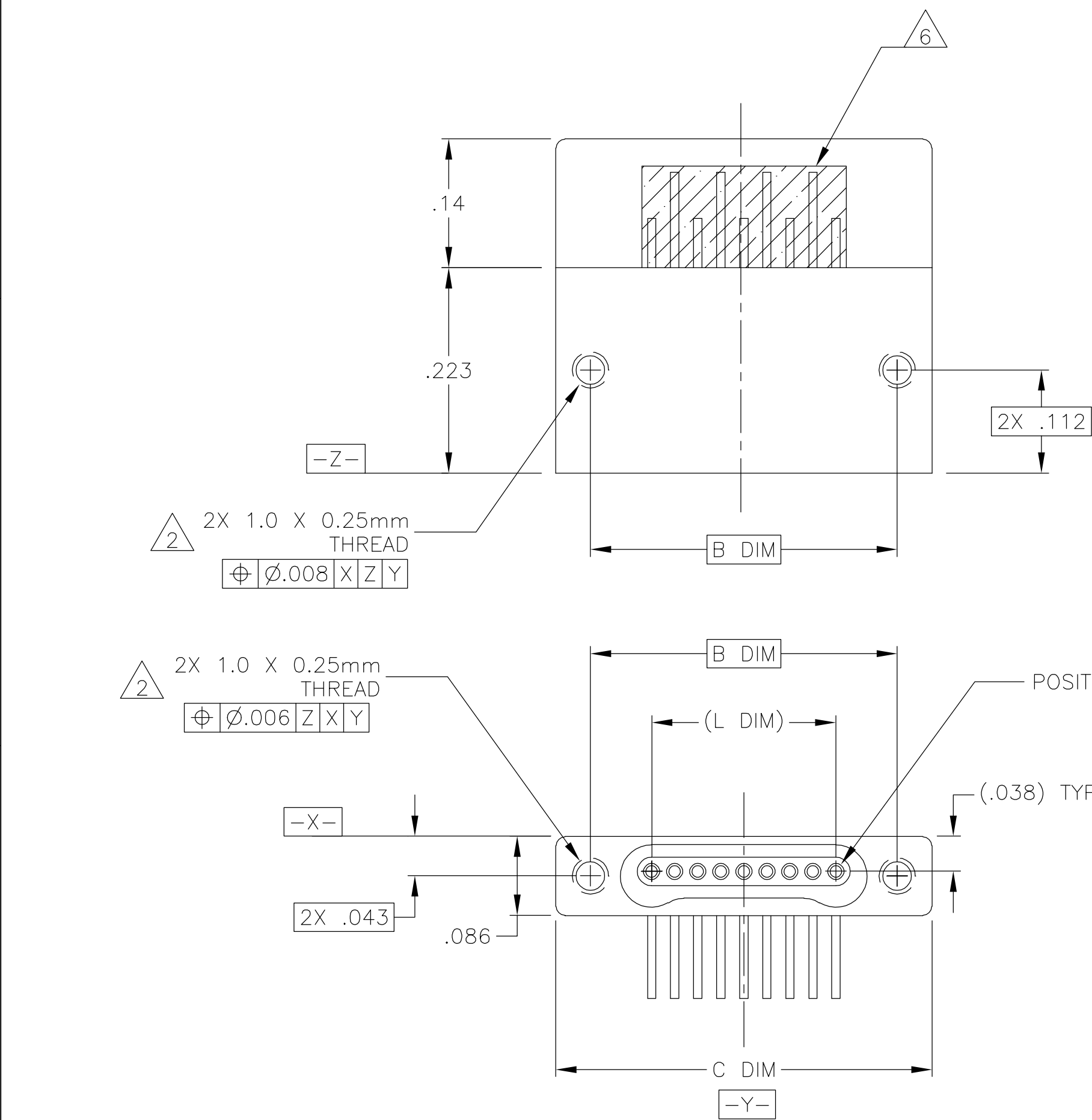


LOC	DIST	REVISIONS				
		P	LTR	DESCRIPTION	DATE	DWN
—	—	C		UPDATE PER ECO-06-001864	25 JAN 06	MJS
						MKS



SIZE	B DIM	C DIM ±.0050	(L DIM)
05	.233	.3085	(.100)
09	.333	.4085	(.200)
15	.483	.5585	(.350)
25	.733	.8085	(.600)
37	1.033	1.1085	(.900)
51	1.383	1.4585	(1.250)

1. SHELL OPTIONS (TO BE SPECIFIED IN NANONICS PART NUMBER):
METAL: 6061-T6 ALUMINUM, ELECTROLESS NICKEL PLATED PER SAE-AMS-C-26074 (STANDARD) OR GOLD PLATED PER ASTM B488
303 STAINLESS STEEL, PASSIVATED PER SAE-AMS-2700
INSULATOR MATERIAL FOR ALL METAL SHELLS IS LIQUID CRYSTAL POLYMER (LCP) PER MIL-M-24519 OR PER ASTM D5138
PLASTIC: LIQUID CRYSTAL POLYMER (LCP) PER MIL-M-24519 OR PER ASTM D5138
2. STANDARD 1.0 X 0.25mm JACKSCREW AND MOUNTING THREADS ARE SHOWN FOR REFERENCE ONLY AND MUST BE SPECIFIED IN THE NANONICS PART NUMBER WHEN REQUIRED. 1.2 X 0.25mm THREADS ALSO AVAILABLE.
3. MOUNTING HARDWARE IS AVAILABLE WITH THIS CONFIGURATION (NOT SHOWN). HARDWARE MUST BE SPECIFIED IN THE NANONICS PART NUMBER. CONSULT TYCO ELECTRONICS FOR DETAILS.
4. LEADS ARE HH BRASS, GOLD PLATED PER ASTM B488 OVER NICKEL PLATE PER SAE-AMS-QQ-N-290
5. LEAD ORGANIZER MATERIAL IS LIQUID CRYSTAL POLYMER PER ASTM D5138
6. THROUGH HOLE LEADS ARE EPOXY ENCAPSULATED WITHIN THE LEAD ORGANIZER
7. TERMINATION CODE: W6.
8. THIS DRAWING PREVIOUSLY IDENTIFIED AS NANONICS N10138/151

THIS DRAWING IS A CONTROLLED DOCUMENT.

DIMENSIONS:
INCHES

MATERIAL
SEE NOTES

TOLERANCES UNLESS
OTHERWISE SPECIFIED:

0 PLC	±	-
1 PLC	±	-
2 PLC	±	.010
3 PLC	±	.005
4 PLC	±	-
ANGLES		± 1
FINISH		

SEE NOTES

DWN
C. SCHOLL
6 AUG 03

CHK
M. STORRY
6 AUG 03

APVD
—

PRODUCT SPEC
—

APPLICATION SPEC
—

WEIGHT
—

CUSTOMER DRAWING

Tyco Electronics Corporation
Harrisburg, PA 17105

NAME
RECEPTACLE ASSEMBLY, HORIZONTAL MOUNT,
THROUGH HOLE, 1 ROW TO 2 ROW, .050 SPACING,
GOLD PLATED LEADS, PLASTIC OR METAL

SIZE
A2

CAGE CODE
0PJN9

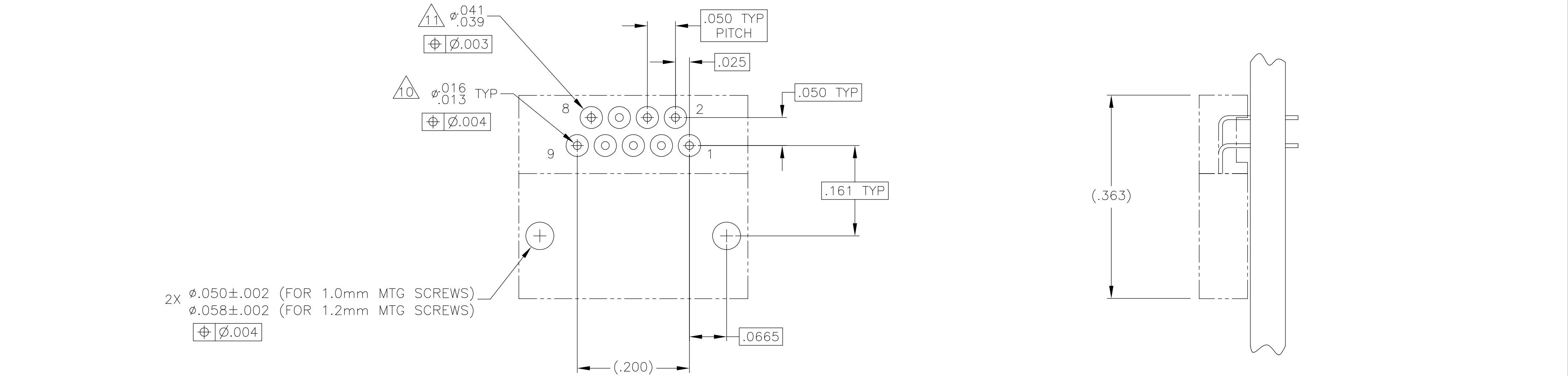
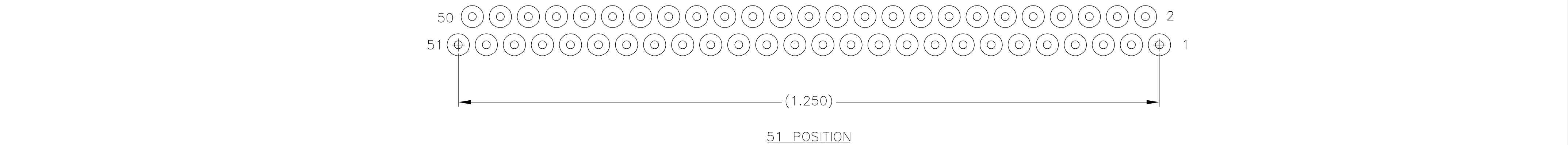
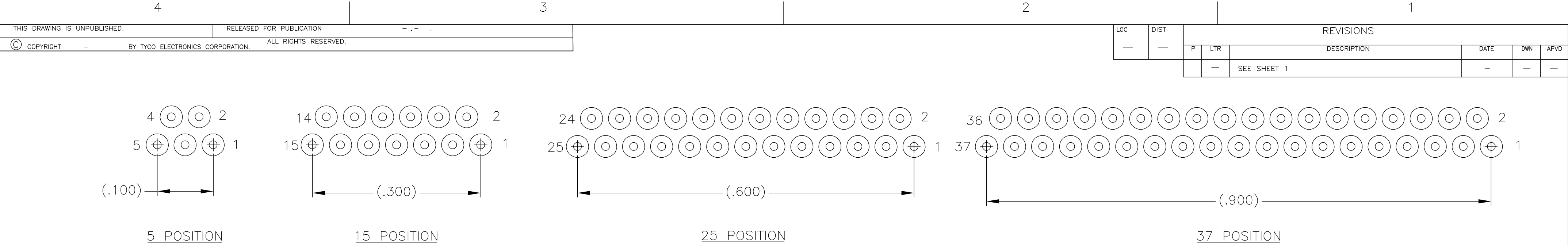
DRAWING NO
C=1589812

RESTRICTED TO
—

SCALE
8:1

SHEET
1 of 2

REV
C



A

TYPICAL PCB LAYOUT

SIZE 09 SHOWN FOR REFERENCE

9

9.

POSITIONAL TOLERANCES FOR BASIC DIMENSIONED FEATURES ARE RELATIVE TO FIDUCIALS OR SOME SIMILAR DATUM REFERENCES DEFINED BY PCB DESIGNER.
10.

PLATED THROUGH HOLES
11.

SOLDER PADS
12.

ALL THROUGH HOLE LAYOUTS ARE AS VIEWED FROM TOP OF PCB.

THIS DRAWING IS A CONTROLLED DOCUMENT.			DWN C. SCHOLL	6 AUG 03	tyco Electronics				Tyco Electronics Corporation			
			CHK M. STORRY	6 AUG 03					Harrisburg, PA 17105			
DIMENSIONS: INCHES		TOLERANCES UNLESS OTHERWISE SPECIFIED:		APVD —	NAME		RECEPTACLE ASSEMBLY, HORIZONTAL MOUNT, THROUGH HOLE, 1 ROW TO 2 ROW, .050 SPACING, GOLD PLATED LEADS, PLASTIC OR METAL					
	0 PLC ± — 1 PLC ± — 2 PLC ± .010 3 PLC ± .005 4 PLC ± — ANGLES ± 1		PRODUCT SPEC —	—								
			APPLICATION SPEC —									
MATERIAL		FINISH		WEIGHT —	SIZE A2	CAGE CODE 0PJN9	DRAWING NO C=1589812			RESTRICTED TO —		
SEE NOTES		SEE NOTES		CUSTOMER DRAWING			SCALE 8:1		SHEET 2 of 2		REV C	

Mouser Electronics

Authorized Distributor

Click to View Pricing, Inventory, Delivery & Lifecycle Information:

[TE Connectivity:](#)

[1589812-2](#)