

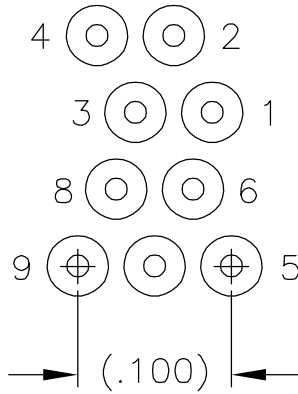


SIZE	B DIM	C DIM $\pm .0050$	(L DIM)
09	.229	.3085	(.100)
15	.304	.3835	(.175)
25	.429	.5085	(.300)
37	.579	.6585	(.450)
51	.754	.8335	(.625)
65	.929	1.0085	(.800)

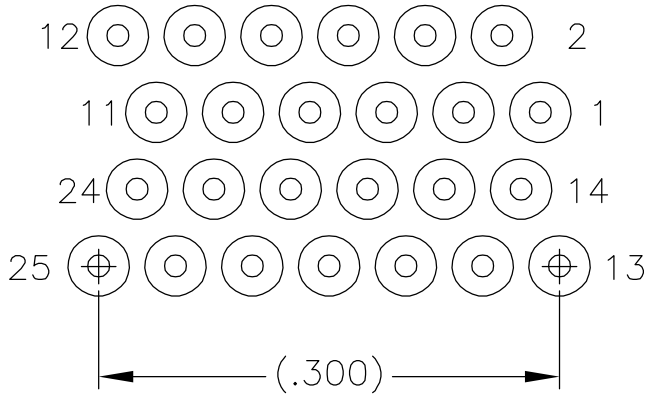
1. SHELL OPTIONS (TO BE SPECIFIED IN NANONICS PART NUMBER):
 METAL: 6061-T6 ALUMINUM, ELECTROLESS NICKEL PLATED PER SAE-AMS-C-26074 (STANDARD) OR GOLD PLATED PER ASTM B488
 303 STAINLESS STEEL, PASSIVATED PER SAE-AMS-2700
 INSULATOR MATERIAL FOR ALL METAL SHELLS IS LIQUID CRYSTAL POLYMER (LCP) PER MIL-M-24519 OR PER ASTM D5138
 PLASTIC: LIQUID CRYSTAL POLYMER (LCP) PER MIL-M-24519 OR PER ASTM D5138
 2. STANDARD 1.0 X 0.25mm MOUNTING AND JACKSCREW THREADS ARE SHOWN FOR REFERENCE ONLY AND MUST BE SPECIFIED IN THE NANONICS PART NUMBER WHEN REQUIRED. 1.2 X 0.25mm THREADS ALSO AVAILABLE.
 3. MOUNTING HARDWARE IS AVAILABLE WITH THIS CONFIGURATION (NOT SHOWN). HARDWARE MUST BE SPECIFIED IN THE NANONICS PART NUMBER. CONSULT TYCO ELECTRONICS FOR DETAILS.
 4. LEADS ARE HH BRASS, GOLD PLATED PER ASTM B488
 5. LEAD ORGANIZER MATERIAL IS LIQUID CRYSTAL POLYMER PER ASTM D5138
 6. THROUGH HOLE LEADS ARE EPOXY ENCAPSULATED WITHIN THE LEAD ORGANIZER
 7. TERMINATION CODE: W6
 8. THIS DRAWING PREVIOUSLY IDENTIFIED AS NANONICS **N10138/260**

THIS DRAWING IS A CONTROLLED DOCUMENT.		DWN C. SCHOLL		5 AUG 03		 Tyco Electronics Corporation Harrisburg, PA 17105	
		CHK M. STORRY		5 AUG 03			
DIMENSIONS: INCHES		TOLERANCES UNLESS OTHERWISE SPECIFIED:		APVD —		NAME RECEPTACLE ASSEMBLY, HORIZONTAL MOUNT, THROUGH HOLE, 2 TO 4 ROW, .050 SPACING, GOLD PLATED LEADS, PLASTIC OR METAL	
		0 PLC ± — 1 PLC ± — 2 PLC ± .010 3 PLC ± .005 4 PLC ± — ANGLES ± 1		PRODUCT SPEC —			
				APPLICATION SPEC —			
MATERIAL		FINISH		WEIGHT —		SIZE A2	
SEE NOTES		SEE NOTES		CAGE CODE 0PJN9		DRAWING NO C=1589809	
				CUSTOMER DRAWING		SCALE 8:1	
						SHEET 1 of 2	
						REV C	

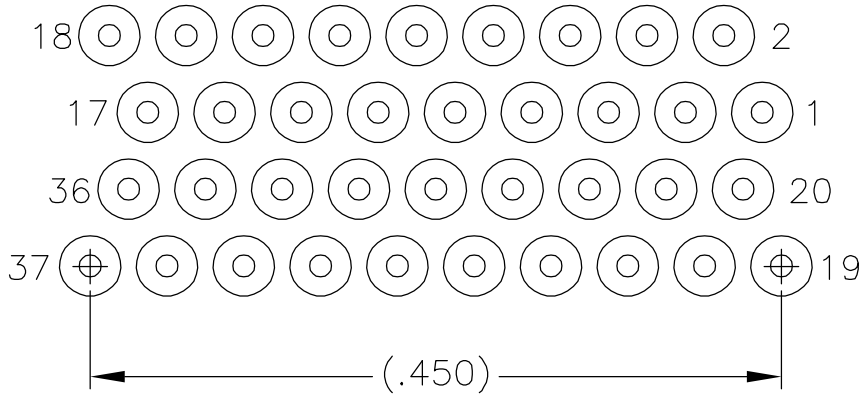
LOC	DIST	REVISIONS					
		P	LTR	DESCRIPTION	DATE	DWN	APVD
			—	SEE SHEET 1	—	—	—



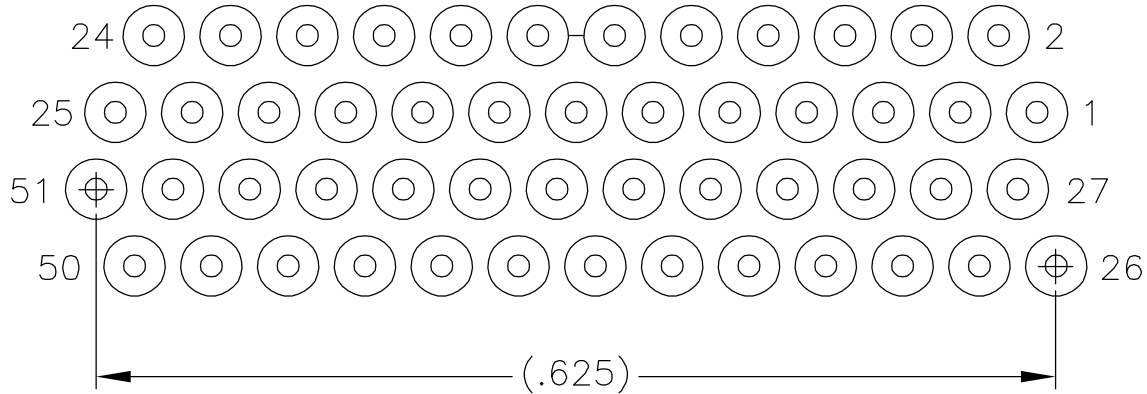
9 POSITION



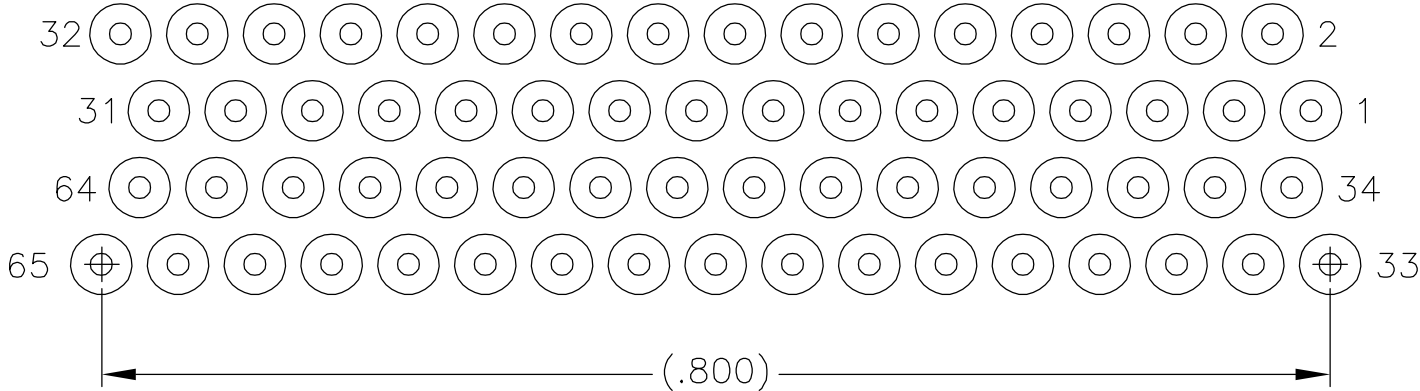
25 POSITION



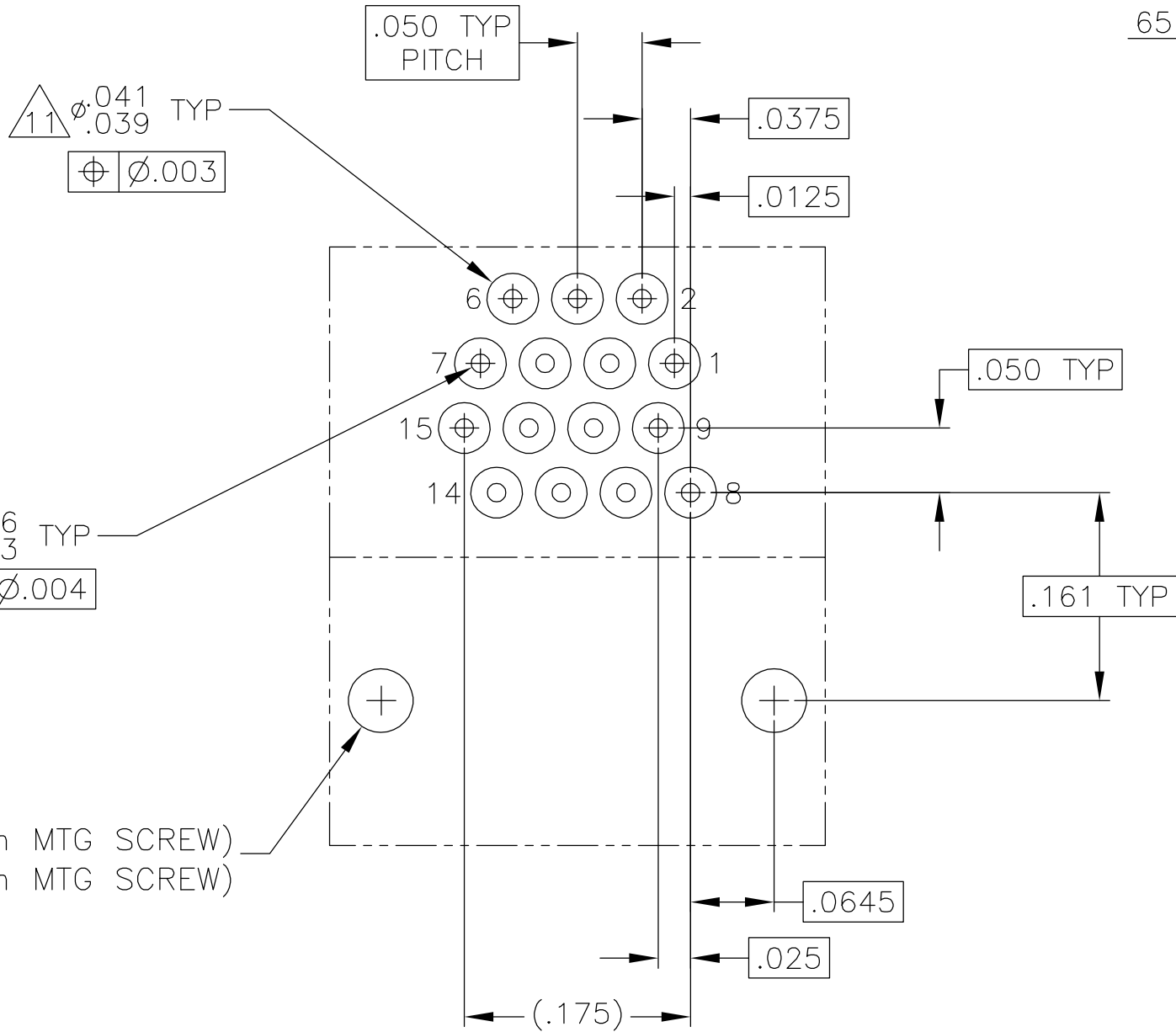
37 POSITION



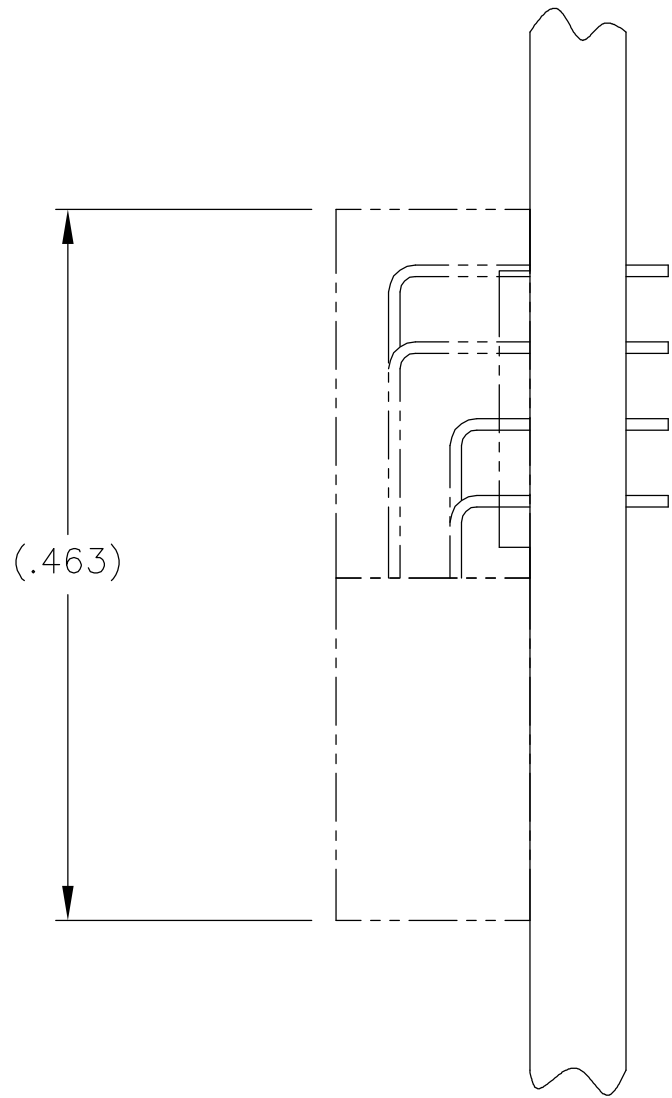
51 POSITION



65 POSITION



TYPICAL PCB LAYOUT
SIZE 15 SHOWN FOR REFERENCE



9.

POSITIONAL TOLERANCES FOR BASIC DIMENSIONED FEATURES ARE RELATIVE TO FIDUCIALS OR SOME SIMILAR DATUM REFERENCES DEFINED BY PCB DESIGNER.
10.

PLATED THROUGH HOLES
11.

SOLDER PADS
12.

ALL THROUGH HOLE LAYOUTS ARE AS VIEWED FROM TOP OF PCB.

THIS DRAWING IS A CONTROLLED DOCUMENT.		DWN C. SCHOLL 5 AUG 03	tyco Electronics Tyco Electronics Corporation Harrisburg, PA 17105			
DIMENSIONS: INCHES		CHK M. STORRY 5 AUG 03				
	TOLERANCES UNLESS OTHERWISE SPECIFIED: 0 PLC ± - 1 PLC ± - 2 PLC ± .010 3 PLC ± .005 4 PLC ± - ANGLES ± 1	APVD —	NAME			
		PRODUCT SPEC —	RECEPTACLE ASSEMBLY, HORIZONTAL MOUNT, THROUGH HOLE, 2 TO 4 ROW, .050 SPACING, GOLD PLATED LEADS, PLASTIC OR METAL			
		APPLICATION SPEC —	SIZE A2	CAGE CODE 0PJN9	DRAWING NO C=1589809	RESTRICTED TO —
MATERIAL SEE NOTES	FINISH SEE NOTES	WEIGHT —	CUSTOMER DRAWING			
			SCALE 8:1	SHEET 2 of 2	REV C	

Mouser Electronics

Authorized Distributor

Click to View Pricing, Inventory, Delivery & Lifecycle Information:

[TE Connectivity:](#)

[1589809-1](#)