

LOC	DIST	REVISIONS				
		P	LTR	DESCRIPTION	DATE	DWN
DF	D0		F	UPDATE PER 0H2Y-0164-04	05-12-04	JDM
						MKS

D

C

B

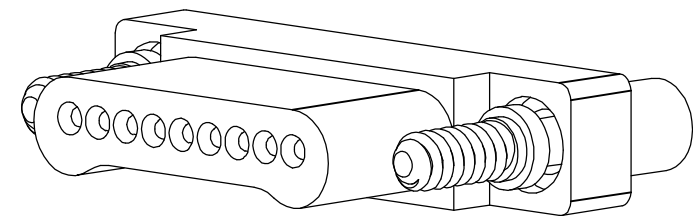
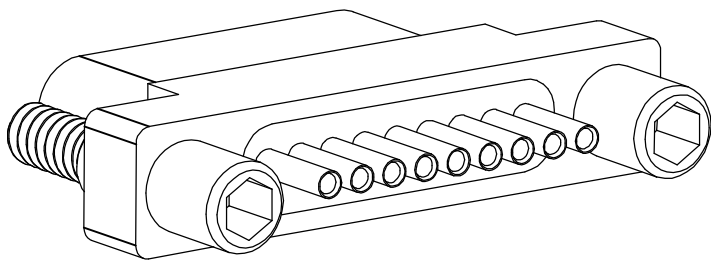
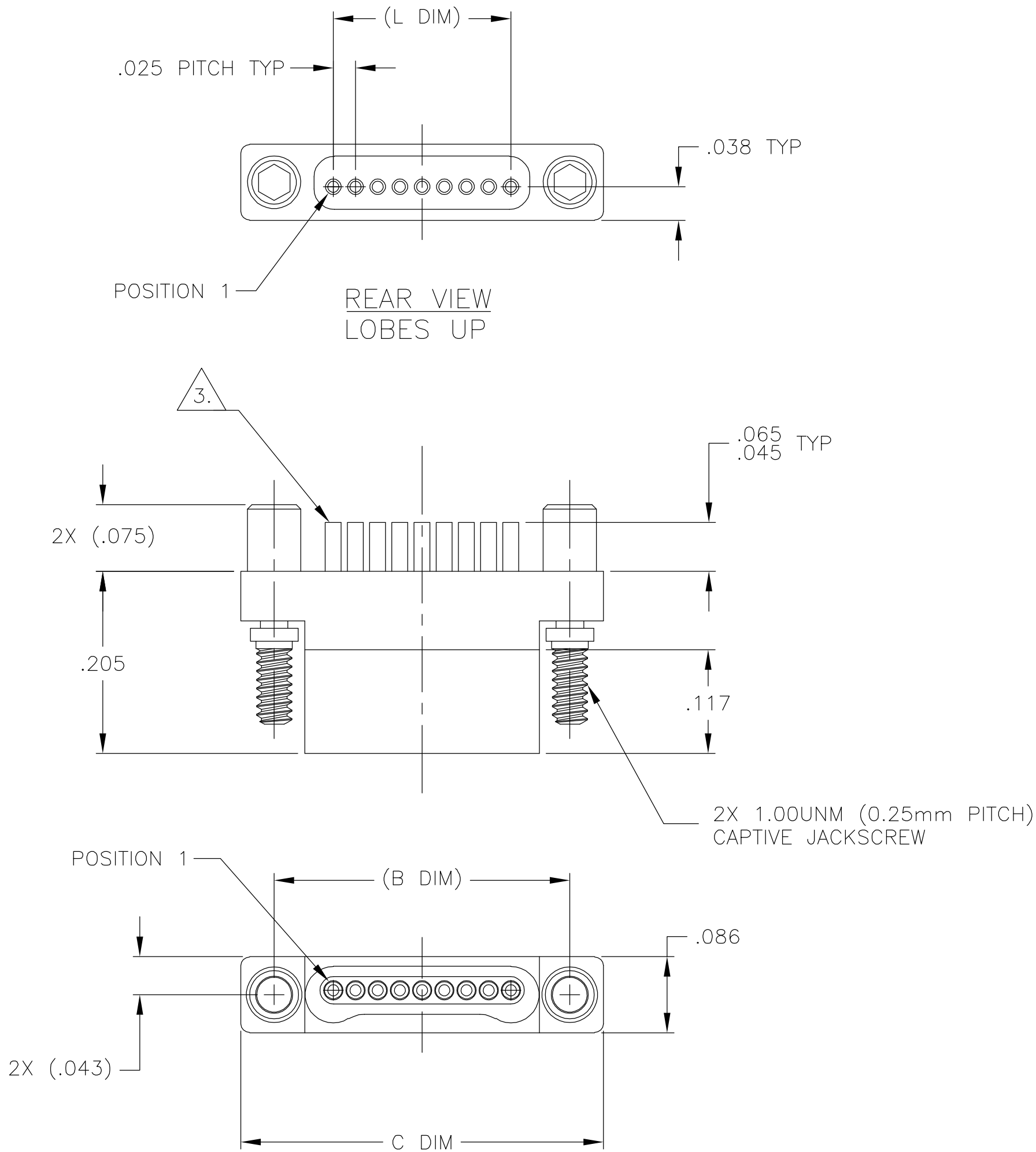
A

D

C

B

A



SIZE	(B DIM)	C DIM ±.0050	(L DIM)
05	(.233)	.3085	(.100)
09	(.333)	.4085	(.200)
15	(.483)	.5585	(.350)
25	(.733)	.8085	(.600)
37	(1.033)	1.1085	(.900)
51	(1.383)	1.4585	(1.250)

1. SHELL OPTIONS (TO BE SPECIFIED IN NANONICS PART NUMBER):
METAL: 6061-T6 ALUMINUM, ELECTROLESS NICKEL PLATED PER MIL-C-26074 (STANDARD) OR GOLD PLATED PER MIL-G-45204
303 STAINLESS STEEL, PASSIVATED PER SAE-AMS-QQ-P-35
INSULATOR MATERIAL FOR ALL METAL SHELLS IS LIQUID CRYSTAL POLYMER (LCP) PER MIL-M-24519 OR PER ASTM D5138
PLASTIC: LIQUID CRYSTAL POLYMER (LCP) PER MIL-M-24519 OR PER ASTM D5138
2. STANDARD 1.00UNM CAPTIVE JACKSCREWS ARE SHOWN FOR REFERENCE ONLY AND MUST BE SPECIFIED IN THE NANONICS PART NUMBER WHEN REQUIRED. JACKSCREW MATERIAL IS 303 STAINLESS STEEL, PASSIVATED PER SAE-AMS-QQ-P-35, AND DRY LUBED PER DOD-L-85645. RETAINING RING IS 17-4 STAINLESS STEEL, PASSIVATED PER SAE-AMS-QQ-P-35. JACKSCREWS HAVE A .9mm HEX SOCKET HEAD. 1.20UNM JACKSCREWS ALSO AVAILABLE.
3. THIS CONFIGURATION TO HAVE SOLDER CUPS WHICH ARE TO BE TERMINATED BY THE CUSTOMER WITH 30 AWG STRANDED OR SMALLER WIRE. SOLDER CUPS ARE GOLD PLATED PER MIL-G-45204.
4. NANONICS TERMINATION CODE: 11500
5. THIS DRAWING PREVIOUSLY IDENTIFIED AS NANONICS 303-0017-XX

THIS DRAWING IS A CONTROLLED DOCUMENT.		DWN D. RYAN	02-12-99	tyco Electronics		Tyco Electronics Corporation			
DIMENSIONS: INCHES		CHK M. STORRY	02-16-99			Harrisburg, PA 17105			
	TOLERANCES UNLESS OTHERWISE SPECIFIED:		APVD S. KAIN	07-10-00	NAME PLUG ASSEMBLY, SINGLE ROW DUALOBE, SOLDER CUP TERMINATION, PLASTIC OR METAL				
			PRODUCT SPEC —						
			APPLICATION SPEC —		SIZE CAGE CODE DRAWING NO RESTRICTED TO				
			WEIGHT —						
MATERIAL SEE NOTES		FINISH SEE NOTES		A2	00779	C=1589051	—		
CUSTOMER DRAWING				SCALE	8:1	SHEET	1 OF 1	REV	F

Mouser Electronics

Authorized Distributor

Click to View Pricing, Inventory, Delivery & Lifecycle Information:

[TE Connectivity:](#)

[1589051-3](#)