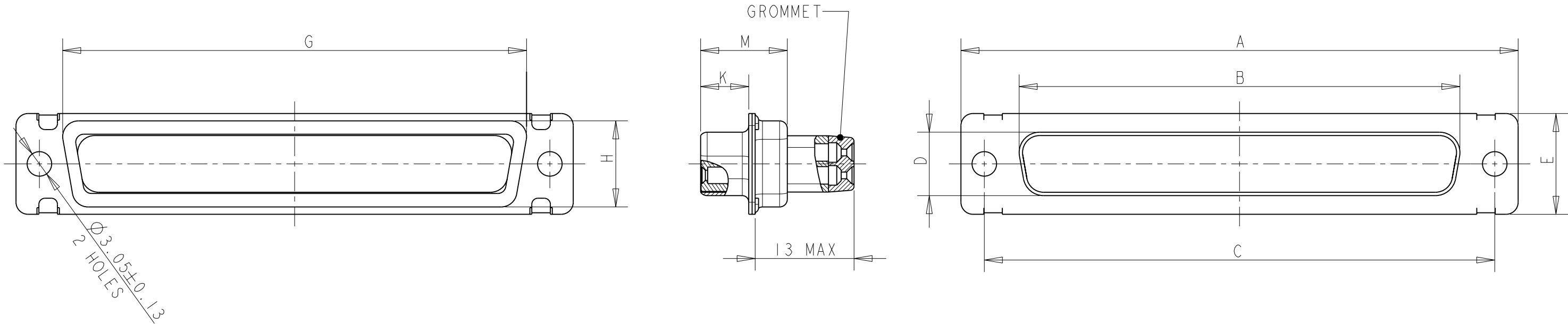


LOC	DIST	REVISIONS					
		P	LTR	DESCRIPTION	DATE	DWN	APVD
F	00		G	CLARIFICATIONS	30JUN2009	JT	YP
			H	13 WAS 11.9 MAX. UPDATE NOTE 5 AND FORMAT	20OCT2011	JT	YP



10.90	6.17	55.32	13.56	15.37	10.74	61.11	52.43	66.93	RECEPTACLE WITH #20 SOCKET CONTACTS	50	5	MDP308GF - 50S2	6-135760-0
10.90	6.17	57.71	10.72	12.55	7.90	63.50	54.84	69.32	RECEPTACLE WITH #20 SOCKET CONTACTS	37	4	MDP308GF - 37S2	9-135760-5
10.90	6.17	41.30	10.72	12.55	7.90	47.04	38.38	53.04	RECEPTACLE WITH #20 SOCKET CONTACTS	25	3	MDP308GF - 25S2	5-135760-9
10.90	6.17	27.51	10.72	12.55	7.90	33.32	24.66	39.14	RECEPTACLE WITH #20 SOCKET CONTACTS	15	2	MDP308GF - 15S2	5-135760-8
10.90	6.17	19.28	10.72	12.55	7.90	24.99	16.33	30.81	RECEPTACLE WITH #20 SOCKET CONTACTS	9	1	MDP308GF - 9S2	9-135760-4
M±0.25	K±0.13	G±0.25	H±0.25	E±0.38	D±0.13	C±0.13	B±0.13	A±0.38	DESCRIPTION	NB POS.	SIZE	OLD P/N	P/N 2

SCALE 6:1

Ø 2.18<sup>+0.12</sup><sub>0</sub>  
2 HOLES

FLOATING BUSHING

SEE NOTES ON LAST SHEET

THIS DRAWING IS A CONTROLLED DOCUMENT.

DIMENSIONS:  
mm

MATERIAL  
NOTE 3

TOLERANCES UNLESS OTHERWISE SPECIFIED:

0 PLC ±0.13  
1 PLC ±0.13  
2 PLC ±0.13  
3 PLC ±  
4 PLC ±  
ANGLES ±1  
FINISH NOTE 4

DWN  
Thierry CORRIOU  
CHK  
Yves PETRONIN  
APVD  
Miguel FURIO  
PRODUCT SPEC  
APPLICATION SPEC  
NOTE 7  
WEIGHT  
-  
CUSTOMER DRAWING

21APR2004  
21APR2004  
21APR2004

TE Connectivity

NAME  
SUB D RECEPTACLE WITH WIRE BUSHING MDP TYPE

SIZE  
A3

CAGE CODE  
00779

DRAWING NO  
C-135760

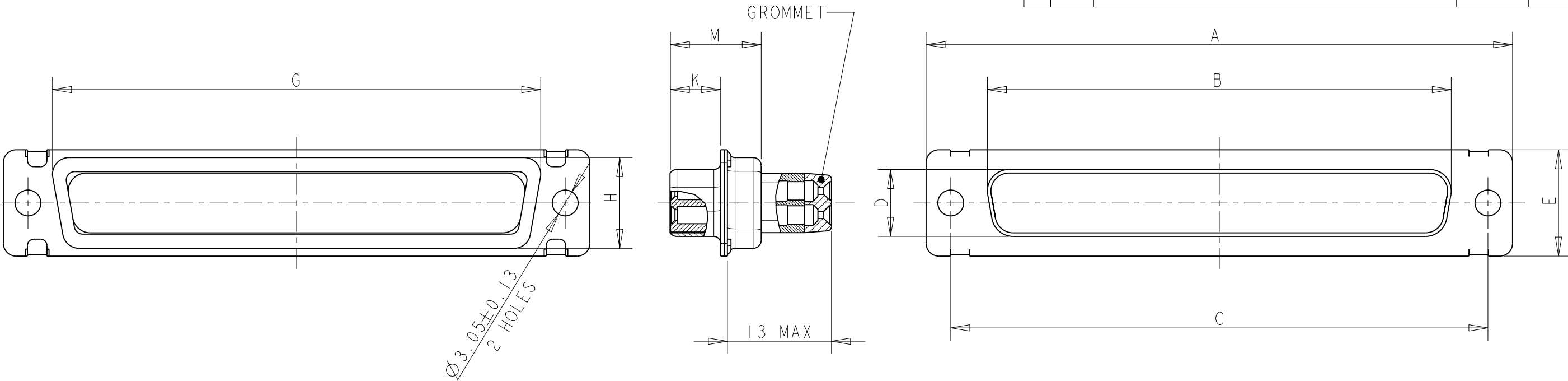
RESTRICTED TO  
-

SCALE  
2:1

SHEET  
1

OF  
5

REV  
H



10.90	6.17	58.47	15.14	16.97	12.32	63.65	55.60	69.32	RECEPTACLE WITH #22 SOCKET CONTACTS	104	6	MDP308G - 66104S2	7-135760-9
10.90	6.17	55.32	13.56	15.37	10.74	61.11	52.43	66.93	RECEPTACLE WITH #22 SOCKET CONTACTS	78	5	MDP308G - 5078S2	9-135760-3
10.90	6.17	57.71	10.72	12.55	7.90	63.50	54.84	69.32	RECEPTACLE WITH #22 SOCKET CONTACTS	62	4	MDP308G - 3762S2	9-135760-1
10.90	6.17	41.30	10.72	12.55	7.90	47.04	38.38	53.04	RECEPTACLE WITH #22 SOCKET CONTACTS	44	3	MDP308G - 2544S2	6-135760-9
10.90	6.17	27.51	10.72	12.55	7.90	33.32	24.66	39.14	RECEPTACLE WITH #22 SOCKET CONTACTS	26	2	MDP308G - 1526S2	8-135760-8
10.90	6.17	19.28	10.72	12.55	7.90	24.99	16.33	30.81	RECEPTACLE WITH #22 SOCKET CONTACTS	15	1	MDP308G - 915S2	8-135760-6
10.90	6.17	55.32	13.56	15.37	10.74	61.11	52.43	66.93	RECEPTACLE WITH #20 SOCKET CONTACTS	50	5	MDP308G - 50S2	5-135760-7
10.90	6.17	57.71	10.72	12.55	7.90	63.50	54.84	69.32	RECEPTACLE WITH #20 SOCKET CONTACTS	37	4	MDP308G - 37S2	5-135760-6
10.90	6.17	41.30	10.72	12.55	7.90	47.04	38.38	53.04	RECEPTACLE WITH #20 SOCKET CONTACTS	25	3	MDP308G - 25S2	5-135760-5
10.90	6.17	27.51	10.72	12.55	7.90	33.32	24.66	39.14	RECEPTACLE WITH #20 SOCKET CONTACTS	15	2	MDP308G - 15S2	8-135760-3
10.90	6.17	19.28	10.72	12.55	7.90	24.99	16.33	30.81	RECEPTACLE WITH #20 SOCKET CONTACTS	9	1	MDP308G - 9S2	5-135760-4
M $\pm 0.25$	K $\pm 0.13$	G $\pm 0.25$	H $\pm 0.25$	E $\pm 0.38$	D $\pm 0.13$	C $\pm 0.13$	B $\pm 0.13$	A $\pm 0.38$	DESCRIPTION	NB POS.	SIZE	OLD P/N	P/N 2

SEE NOTES ON LAST SHEET

THIS DRAWING IS A CONTROLLED DOCUMENT.

DIMENSIONS:  
mm

MATERIAL  
NOTE 3

TOLERANCES UNLESS OTHERWISE SPECIFIED:

0 PLC  
1 PLC  
2 PLC  
3 PLC  
4 PLC  
ANGLES  
FINISH

$\pm 0.13$   
 $\pm 0.13$   
 $\pm 0.13$   
 $\pm$   
 $\pm$   
 $\pm 1$   
NOTE 4

DWN  
Thierry CORRIOU  
CHK  
Yves PETRONIN  
APVD  
Miguel FURIO

21APR2004  
21APR2004  
21APR2004

PRODUCT SPEC  
-  
APPLICATION SPEC  
NOTE 7  
WEIGHT  
-

NAME  
SUB D RECEPTACLE WITH WIRE BUSHING MDP TYPE

SIZE  
A3

CAGE CODE  
00779

DRAWING NO  
C-135760

CUSTOMER DRAWING

SCALE  
2:1

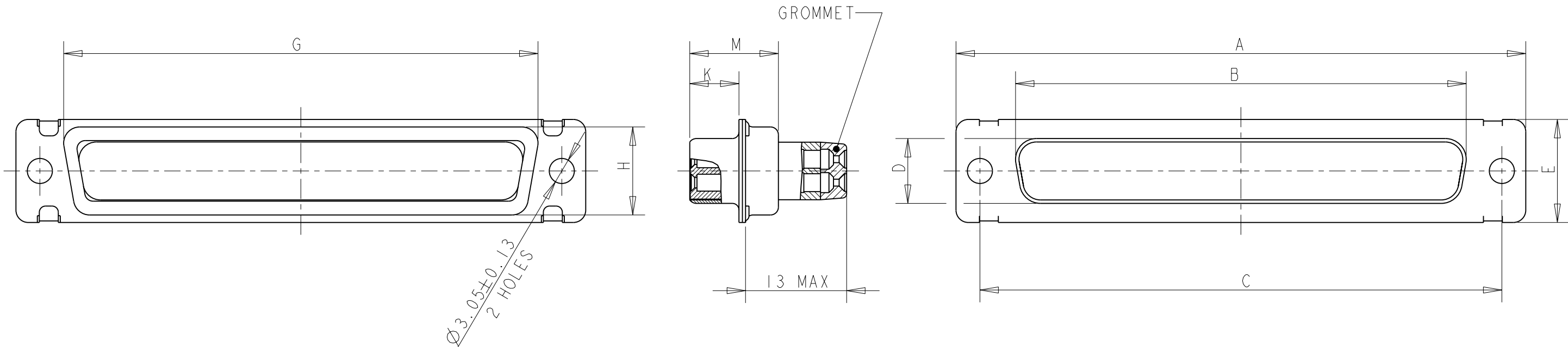
SHEET  
2 OF 5

REV  
H

TE Connectivity

1470-19 (3/11)

2		1					
LOC	DIST	REVISIONS					
F	00	P	LTR	DESCRIPTION	DATE	DWN	APVD
			-	SEE SHEET 1	-	-	-



10.90	6.17	58.47	15.14	16.97	12.32	63.65	55.60	69.32	RECEPTACLE, HIGH DENSITY	104	6	MDP308G - 66104S2 - 001	8-135760-0
10.90	6.17	55.32	13.56	15.37	10.74	61.11	52.43	66.93	RECEPTACLE, HIGH DENSITY	78	5	MDP308G - 5078S2 - 001	9-135760-2
10.90	6.17	57.71	10.72	12.55	7.90	63.50	54.84	69.32	RECEPTACLE, HIGH DENSITY	62	4	MDP308G - 3762S2 - 001	9-135760-0
10.90	6.17	41.30	10.72	12.55	7.90	47.04	38.38	53.04	RECEPTACLE, HIGH DENSITY	44	3	MDP308G - 2544S2 - 001	8-135760-9
10.90	6.17	27.51	10.72	12.55	7.90	33.32	24.66	39.14	RECEPTACLE, HIGH DENSITY	26	2	MDP308G - 1526S2 - 001	8-135760-7
10.90	6.17	19.28	10.72	12.55	7.90	24.99	16.33	30.81	RECEPTACLE, HIGH DENSITY	15	1	MDP308G - 915S2 - 001	8-135760-5
10.90	6.17	55.32	13.56	15.37	10.74	61.11	52.43	66.93	RECEPTACLE	50	5	MDP308G - 50S2 - 001	4-135760-5
10.90	6.17	57.71	10.72	12.55	7.90	63.50	54.84	69.32	RECEPTACLE	37	4	MDP308G - 37S2 - 001	4-135760-4
10.90	6.17	41.30	10.72	12.55	7.90	47.04	38.38	53.04	RECEPTACLE	25	3	MDP308G - 25S2 - 001	4-135760-6
10.90	6.17	27.51	10.72	12.55	7.90	33.32	24.66	39.14	RECEPTACLE	15	2	MDP308G - 15S2 - 001	4-135760-3
10.90	6.17	19.28	10.72	12.55	7.90	24.99	16.33	30.81	RECEPTACLE	9	1	MDP308G - 9S2 - 001	4-135760-2
M±0.25	K±0.13	G±0.25	H±0.25	E±0.38	D±0.13	C±0.13	B±0.13	A±0.38	DESCRIPTION	NB POS	SIZE	OLD P/N	P/N 2

SEE NOTES ON LAST SHEET

THIS DRAWING IS A CONTROLLED DOCUMENT.

DIMENSIONS:  
mm

MATERIAL  
NOTE 3

TOLERANCES UNLESS OTHERWISE SPECIFIED:

0 PLC ±0.13  
1 PLC ±0.13  
2 PLC ±0.13  
3 PLC ±  
4 PLC ±  
ANGLES ±1  
FINISH NOTE 4

DWN 21APR2004  
Thierry CORRIOU  
CHK 21APR2004  
Yves PETRONIN  
APVD 21APR2004  
Miguel FURIO  
PRODUCT SPEC  
APPLICATION SPEC  
NOTE 7  
WEIGHT  
CUSTOMER DRAWING

TE Connectivity

NAME  
SUB D RECEPTACLE  
WITH WIRE BUSHING  
MDP TYPE

SIZE  
A3

CAGE CODE  
00779

DRAWING NO  
C-135760

RESTRICTED TO  
-

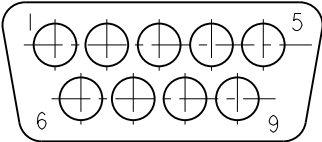
SCALE 2:1

SHEET 3 OF 5

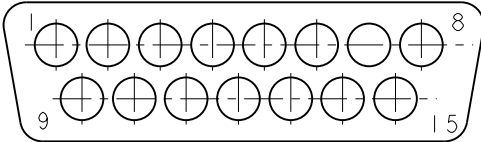
REV H

LOC	DIST	REVISIONS					
F	00	P	LTR	DESCRIPTION	DATE	DWN	APVD
			-	SEE SHEET 1	-	-	-

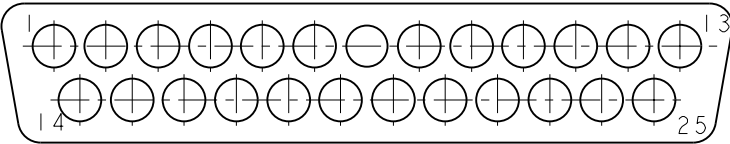
MATING FACE OF PLUG SHOWN  
CONFIGURATIONS FOR #20 CONTACTS



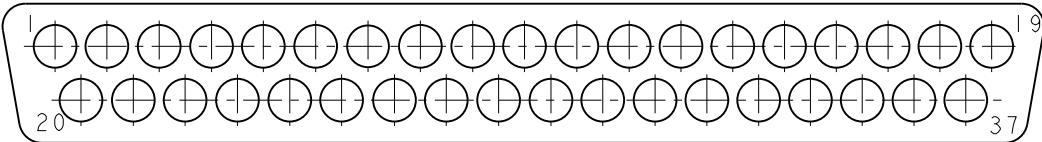
9 POSITION MS18273-1  
SHELL SIZE 1



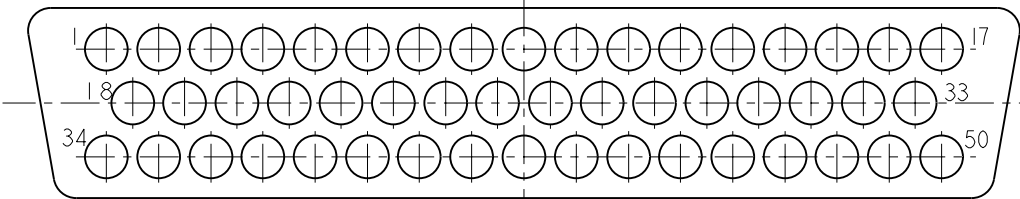
15 POSITION MS18274-1  
SHELL SIZE 2



25 POSITION MS18275-1  
SHELL SIZE 3

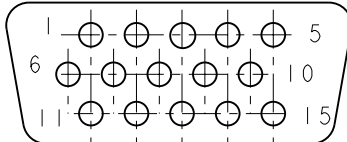


37 POSITION MS18276-1  
SHELL SIZE 4

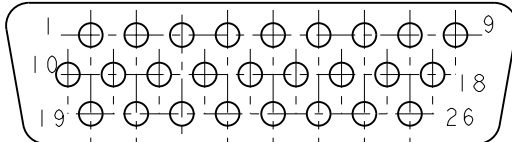


50 POSITION MS18277-1  
SHELL SIZE 5

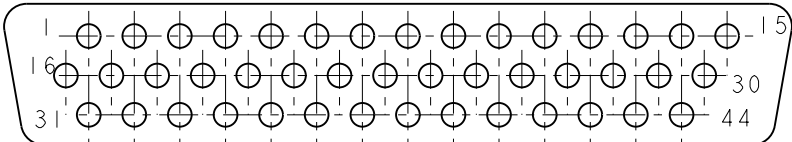
CONFIGURATIONS FOR #22 CONTACTS  
MATING FACE OF PLUG SHOWN



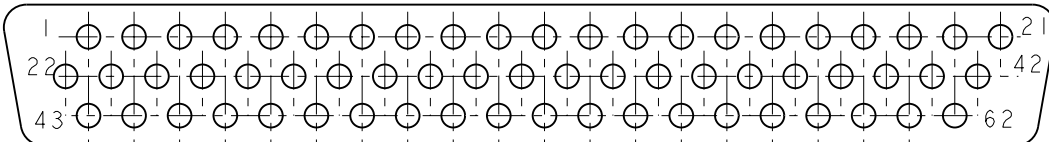
15 POSITION MS18273-2  
SHELL SIZE 1



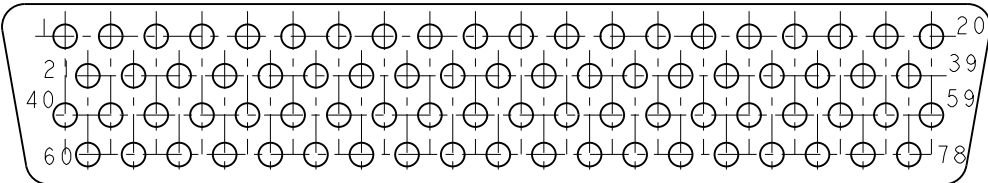
26 POSITION MS18274-2  
SHELL SIZE 2



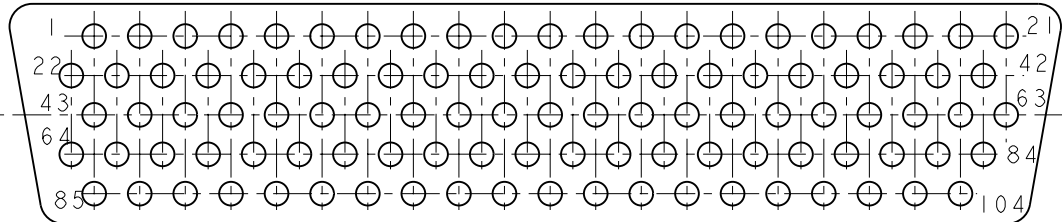
44 POSITION MS18275-2  
SHELL SIZE 3



62 POSITION MS18276-2  
SHELL SIZE 4


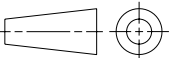


78 POSITION MS18277-2  
SHELL SIZE 5



104 POSITION MS14004-1  
SHELL SIZE 6

SEE NOTES ON LAST SHEET

THIS DRAWING IS A CONTROLLED DOCUMENT.		DWN Thierry CORRIOU 21APR2004	<div>TE Connectivity</div>			
DIMENSIONS: mm		CHK Yves PETRONIN 21APR2004				
		APVD Miguel FURIO 21APR2004				
TOLERANCES UNLESS OTHERWISE SPECIFIED:		PRODUCT SPEC -				
MATERIAL NOTE 3		FINISH NOTE 4	APPLICATION SPEC NOTE 7	WEIGHT -	SUB D RECEPTACLE WITH WIRE BUSHING MDP TYPE	
CUSTOMER DRAWING			SIZE A3	CAGE CODE 00779	DRAWING NO C-135760	RESTRICTED TO -
			SCALE 1:1	SHEET 4	OF 5	REV H

4

3

2

1


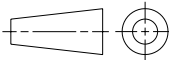

THIS DRAWING IS UNPUBLISHED.	RELEASED FOR PUBLICATION	20
© COPYRIGHT 20	Tyco Electronics AMP GmbH	ALL RIGHTS RESERVED.

LOC	DIST	REVISIONS				
		P	LTR	DESCRIPTION	DATE	APVD
F	00		-	SEE SHEET 1	-	-

THIS CONNECTOR MEETS THE REQUIREMENTS OF MIL-DTL-24308

PART NUMBER FOR ORDERING

- 3- MATERIALS :
- SHELL : STEEL,CD PLATED
  - HOUSING : PBT,GLASS FILLED,UL94VO
  - RETAINING CLIP : STAINLESS STEEL
  - GROMMET AND INTERFACIAL SEAL : FLUOROSILICONE ELASTOMER
  - SEALING COMPOUND : RTV
  - CONTACT:COPPER ALLOY,GOLD PLATED OVER NICKEL
- 4- CABLES EXTERNAL DIAMETER FOR CONTACTS #20 :  $\varnothing 0.85$  to  $\varnothing 1.83$   
CABLES EXTERNAL DIAMETER FOR CONTACTS #22 :  $\varnothing 1.37$  MAX
- 5- CONNECTOR MARKING:
- . MANUFACTURER IDENTIFICATION
  - . PART NUMBER
  - . DATE-CODE
- 6- INSERT ARRANGEMENT PER MIL-DTL-24308
- 7- FOR CONTACT CRIMPING INSTRUCTION SHEET REFER TO SPEC IS 7516  
FOR CONTACT INSTALATION/ REMOVAL INSTRUCTION SHEET REFER TO SPEC IS 7508
- 8- #20 SOCKET CRIMP CONTACT P/N: 205090-1  
#20 PIN CRIMP CONTACT P/N: 205089-1
- #22D SOCKET CRIMP CONTACT P/N: 204351-1  
#22D PIN CRIMP CONTACT P/N: 204370-2
- 9- INSERTION/EXTRACTION TOOL P/N: 91067-2  
INSERTION/EXTRACTION TOOL P/N: 91067-1
- 10- CRIMP WITH HAND TOOL: 601966-1+ DIE INSERT : 601966-4  
CRIMP WITH HAND TOOL: M22520/02-01 + POSITIONNER : M22520/02-06

THIS DRAWING IS A CONTROLLED DOCUMENT.		DWN Thierry CORRIOU 21APR2004		 TE Connectivity									
		CHK Yves PETRONIN 21APR2004											
DIMENSIONS: mm		TOLERANCES UNLESS OTHERWISE SPECIFIED:		NAME SUB D RECEPTACLE WITH WIRE BUSHING MDP TYPE									
		0 PLC ±0.13 1 PLC ±0.13 2 PLC ±0.13 3 PLC ±- 4 PLC ±- ANGLES ±1											
MATERIAL NOTE 3		FINISH NOTE 4		PRODUCT SPEC - 		SIZE A3		CAGE CODE 00779		DRAWING NO C-135760		RESTRICTED TO -	
				APPLICATION SPEC NOTE 7		WEIGHT -							
CUSTOMER DRAWING								SCALE 1 : 1		SHEET 5 OF 5		REV H	

# Mouser Electronics

Authorized Distributor

Click to View Pricing, Inventory, Delivery & Lifecycle Information:

[TE Connectivity:](#)

[6-135760-0](#)