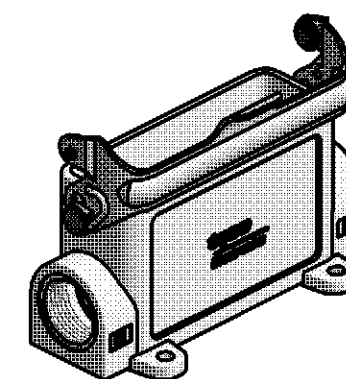
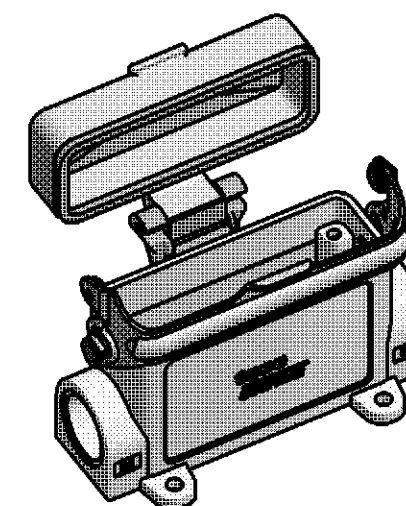
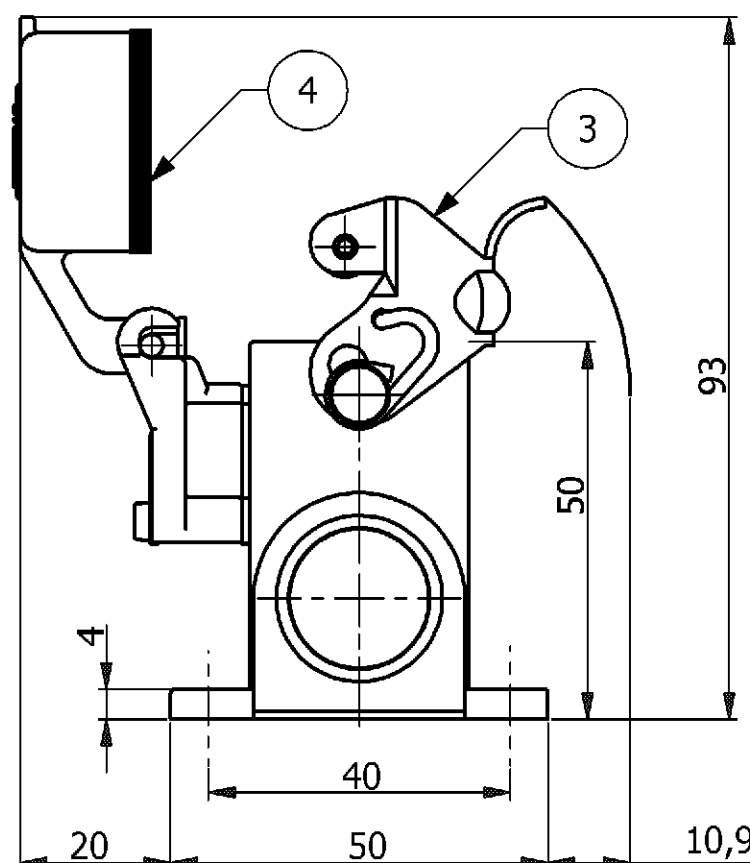


1 PACKAGING QUANTITY: 5 PIECES PER BOX

2 MATERIAL: HOUSING: ALUMINIUM DIECASTING ALLOY
SEALS: NEOPRENE

3 FINISH: VARNISH GREY

4 VARNISH ON THE INSIDE NOT NECESSARY






~~PN 0-2 as shown~~

~~PN 0-2~~

PN 0-1

OBSOLETE	<div><div>PN 0-2</div><div>PN 0-1</div></div>						
	<div><div>2</div><div>3</div><div>3</div></div>						
	-	Cover	Aluminium	-	Grey	5	-
	-	Profile Seal	Neoprene	-	Black	4	-
	1	Side Clip	Steel	Zink Plated	Blue	3	-
	-	Surface Mounted Housing-Side Entry	Aluminium	-	Grey	2	-
	1	Surface Mounted Housing-Side Entry	Aluminium	-	Grey	1	-
	0-2	0-1	DESCRIPTION	MATERIAL	SURFACE	COLOR	ITEM NO.
ORDERING TEXT							
HA.16.SG-LB.1.M20.Z							
HA.16.SGD-LB.1.M20.Z							

<div>THIS DRAWING IS A CONTROLLED DOCUMENT FOR AMP INCORPORATED. IT IS SUBJECT TO CHANGE AND THE CONTROLLING ENGINEERING ORGANIZATION SHOULD BE CONTACTED FOR THE LATEST REVISION. DIESES ZEICHNUNGSDOKUMENT WIRD DURCH AMP INCORPORATED KONTROLLIERT. ÄNDERUNGEN, DIE DEM TECHNISCHEN FORTSCHRITT DIENEN, SIND VORBEHALTEN. DEN JEWEILS LETZTGÜLTIGEN ÄNDERUNGSSTAND ERFAHREN SIE AUF ANFRAGE.</div>		DWN 3/2/2006		<div>TE Connectivity</div>	
P.BENNUR		CHK 3/2/2006			
R.SRINIVAS		APVD 3/2/2006		<div>NAME</div> <div>SURFACE MOUNTED HOUSING, SIDE ENTRY</div> <div>HA.16.SG-LB.1.M20.Z</div>	
T.SCHNURPFEIL		PRODUCT SPEC. PRODUKTSPEZ.			
APPLICATION SPEC. VERARBEITUNGSSPEZ.		-			
-		-			
<div>DIMENSIONS: DIMENSIONEN: mm</div>		<div>TOLERANCES UNLESS OTHERWISE SPECIFIED: ALLGEMEINTOLERANZEN</div> <div>n. ISO 8015 - mH-E n. ISO 2768 - 140 n. DIN 16901- 0 PLC # 1 PLC # 2 PLC # 3 PLC # ANGLES / WINKEL #</div>		SIZE	
<div></div>		MATERIAL		CAGE CODE	
FINISH / OBERFLÄCHE / FARBE		WEIGHT GEWICHT		DRAWING NO. ZEICHNUNGS-NR.	
<div></div>		- A3		00779	
				C- 1103058	
CUSTOMER DRAWING / KUNDENZEICHNUNG				SCALE MASSSTAB 1:1	
				SHEET BLATT 1	
				OF VON 1	
				REV B2	

Mouser Electronics

Authorized Distributor

Click to View Pricing, Inventory, Delivery & Lifecycle Information:

[TE Connectivity:](#)

[1103058-1](#)