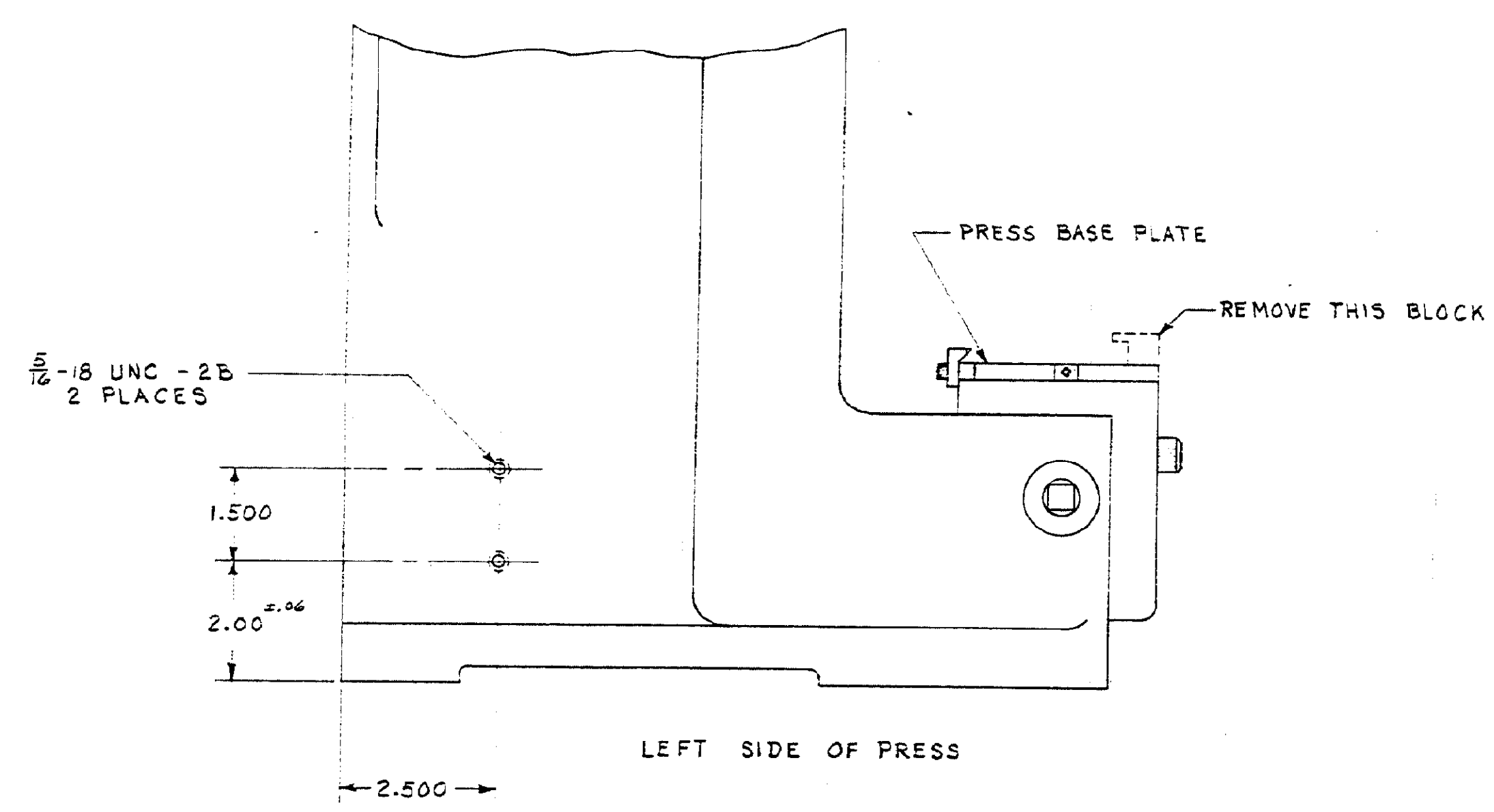
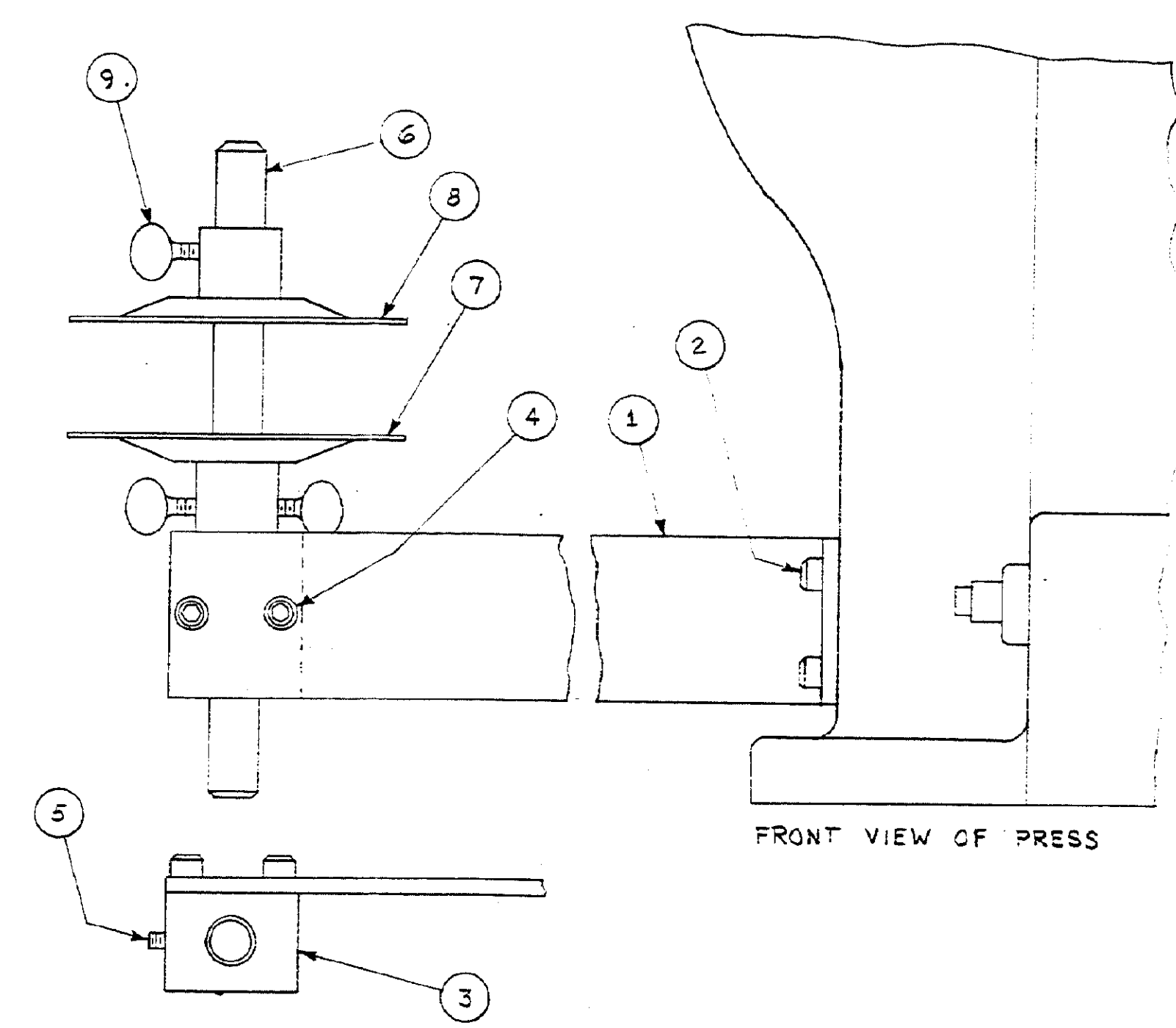


USED ON	NEXT ASSY



MODIFY PRESS FRAME AS SHOWN



ITEM NO	NUMBER	NAME	REMARKS
3	BA 22578-6	SCREW, THUMB WING	9
1	B 465520-1	FLANGE, SUB ASSEMBLY	3
1	B 452657-1	FLANGE, SUB ASSEMBLY (MOD.)	7
1	A 452614-1	SHAFT, REEL	6
1	5B 1-21007-0	SCREW, SOC. SET 1/4-20 UNC X 1.00 LG.	5
2	5A 1-21001-8	SCREW, SOC. HD. CAP 5/16-18 UNC X .75 LG	4
1	A 452613-1	BLOCK, REEL SHAFT	3
2	3A 1-21001-6	SCREW, SOC. HD. CAP 5/16-18 UNC X .50 LG.	2
1	B 452612-1	ARM, REEL SUPPORT	1

B REACTIVATE JACK L-5302 A OBSOLETE EQUIPMENT LTR REVISION RECORD OR CHG DATE		692613 REQUIRED PER ASSEMBLY 7-10-67 5-31-67 MATERIAL AND FINISH WIRE - RANGE - INSULATION TYPE TOLERANCE EXCEPT AS NOTED SCALE 1:2 LOC A D 692613 REEL BRACKET ASSEMBLY DRAWING	
---	--	--	--

DIMENSIONS IN INCHES DO NOT SCALE PRINT

Mouser Electronics

Authorized Distributor

Click to View Pricing, Inventory, Delivery & Lifecycle Information:

[TE Connectivity:](#)

[692613-1](#)