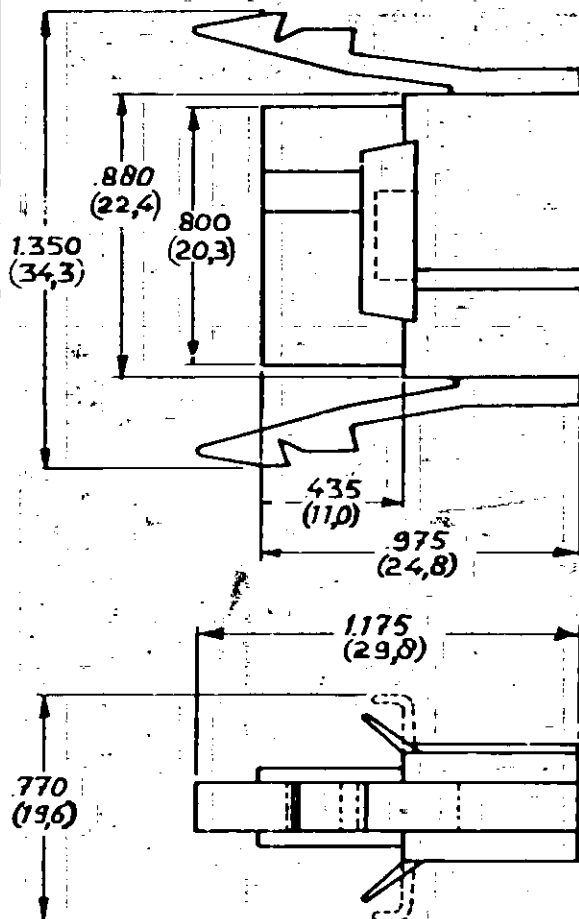


DRAWING MADE IN AMERICAN PROJECTION

NUMBER C-163038



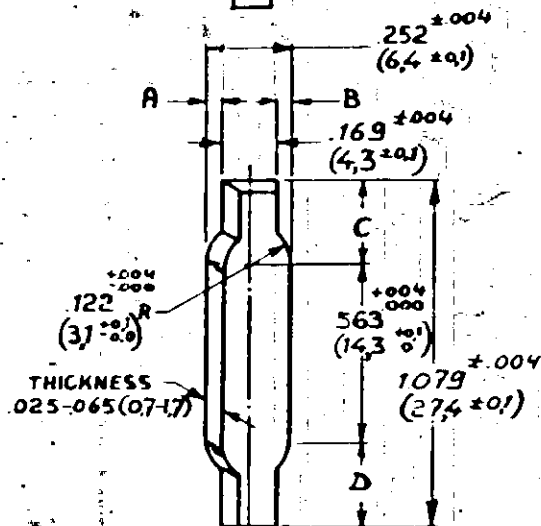
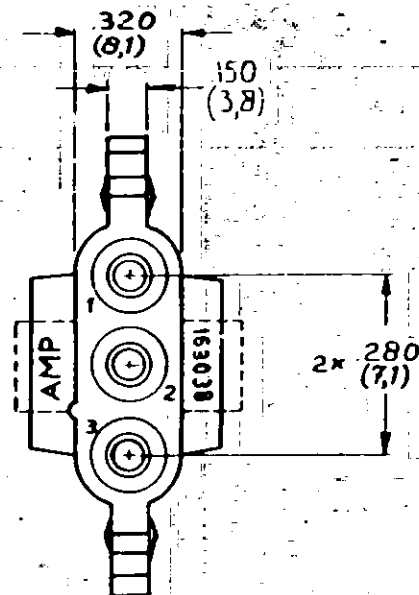
ANTI-RATTLE WINGS AND LOCKING BARBS CAN BE DIFFERENT OF APPEARANCE.

1-163038-9	BLACK	
1-163038-8	GREY	
1-163038-7	VIOLET	
1-163038-6	BLUE	
1-163038-5	GREEN	
1-163038-4	YELLOW	
1-163038-3	ORANGE	
1-163038-2	RED	
1-163038-1	BROWN	
1-163038-0	NATURAL	

ORDER NO.	MATERIAL	PLATING
DR R. Visser 26.7.73	DATE 26.7.73	DATE
CHK C. Tibbings 26.7.73	DATE 26.7.73	DATE

SCALE	SIZE	NO	NAME
2:1	A	C-163038	3-CIRCUIT SOCKET HOUSING MATE-N-LOK

AMP 1223-11



PANEL CUT-OUT

DIMENSIONS A B B AND C D TO BE EQUAL WITHIN (0.2) 0.08 THE PANEL MUST BE PUNCHED SO THAT THE HOUSING ENTERS THE PANEL IN THE SAME DIRECTION AS THE PUNCH.

CUSTOMER COPY FOR REFERENCE ONLY

©1980 BY AMP-HOLLAND N.V. ALL RIGHTS RESERVED AMP PRODUCTS COVERED BY PATENTS AND/OR PATENTS PENDING.

MATERIAL ZYTEL 101

RVSUL-RANGE

FIRST USED

AMP

AMP-HOLLAND N.V.
's-Hertogenbosch

SCALE

2:1

SIZE

A

NO

C-163038

PAGE 1 OF 4

REV

C

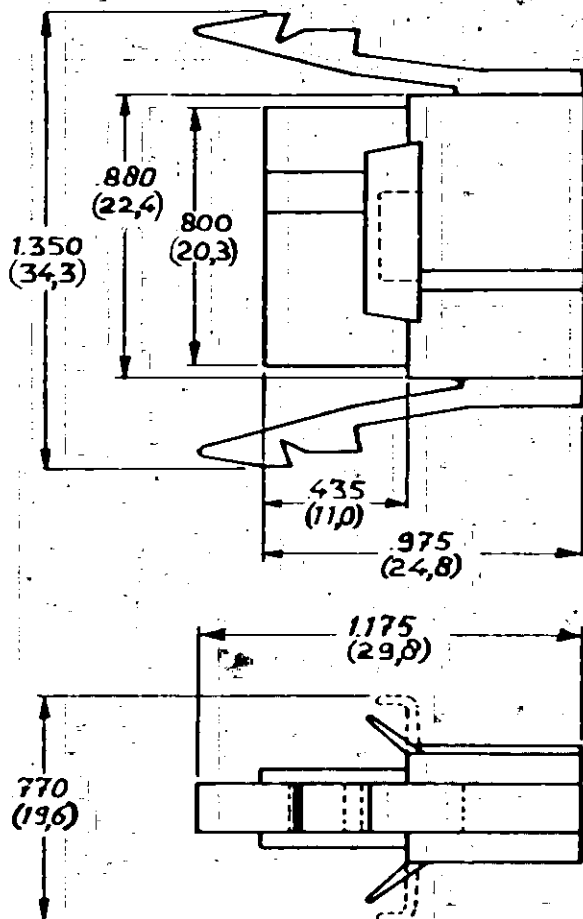
NAME

3-CIRCUIT SOCKET HOUSING MATE-N-LOK

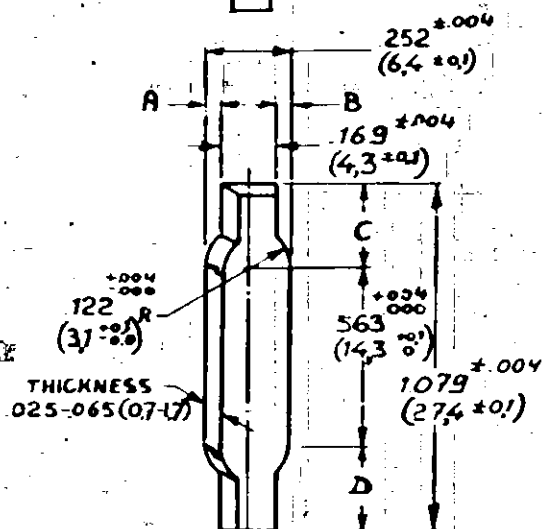
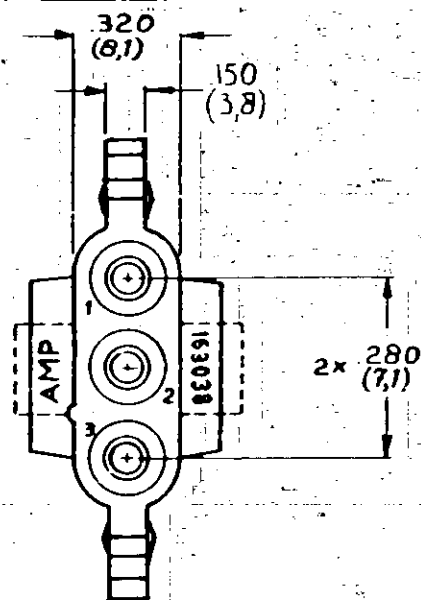
DRAWING MADE IN AMERICAN PROJECTION

NUMBER C-163038

(USA)



ANTI-RATTLE WINGS AND LOCKING BARBS CAN BE
DIFFERENT OF APPEARANCE.



PANEL CUT-OUT

DIMENSIONS ABB AND CBD TO BE EQUAL
WITHIN (0,2) 008
THE PANEL MUST BE PUNCHED SO THAT THE
HOUSING ENTERS THE PANEL IN THE SAME
DIRECTION AS THE PUNCH.

2-163038-9	BLACK	
2-163038-8	GREY	
2-163038-7	VIOLET	
2-163038-6	BLUE	
2-163038-5	GREEN	
2-163038-4	YELLOW	
2-163038-3	ORANGE	
2-163038-2	RED	
2-163038-1	BROWN	
2-163038-0	NATURAL	

CUSTOMER COPY FOR REFERENCE ONLY

©1980 BY AMP, HOLLAND N.V. ALL RIGHTS
RESERVED A.M.P. PRODUCTS COVERED BY
PATENTS AND OR PATENTS PENDING.

AMP

AMP - HOLLAND N.V.
's-Hertogenbosch

MKT. ZYTEL
FE 3016

INS. JL. RANGE

FIRST USED

ORDER NO. MATERIAL PLATING

SCALE
2:1SIZE
A

NO

C-163038

PAGE 2 OF 4

REV

C

OR R. Visser DATE 26-6-73

CHK C. Tilburg DATE 26-6-73

NAME

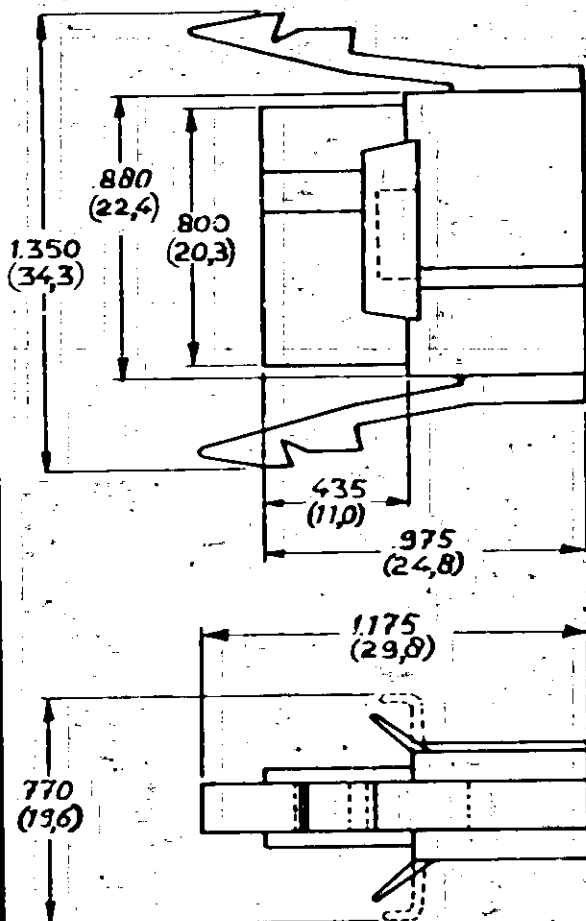
3-CIRCUIT SOCKET HOUSING MATE-N-LOK

AMP 12624

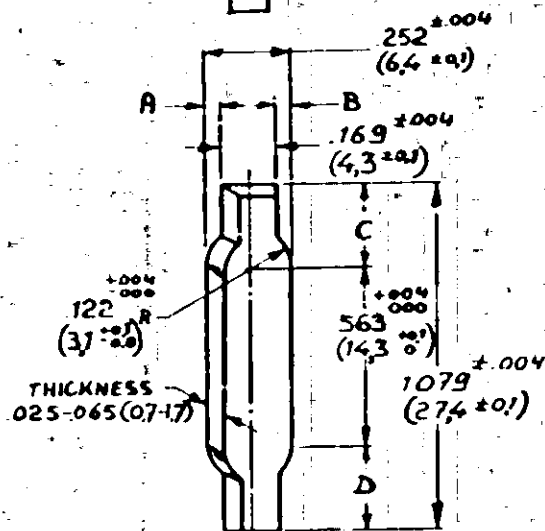
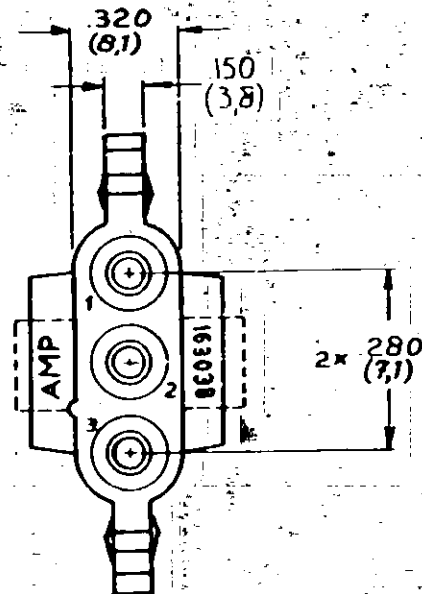
INCHES
DIMENSIONS IN () IN () DO NOT SCALE PRINT

DRAWING MADE IN AMERICAN PROJECTION

NUMBER C-163038



ANTI-RATTLE WINGS AND LOCKING BARBS CAN BE DIFFERENT OF APPEARANCE



PANEL CUT-OUT

DIMENSIONS ABB AND CBD TO BE EQUAL WITHIN (0.2) 008 THE PANEL MUST BE PUNCHED SO THAT THE HOUSING ENTERS THE PANEL IN THE SAME DIRECTION AS THE PUNCH.

DIMENSIONS IN (mm) DO NOT SCALE PRINT

CUSTOMER COPY FOR REFERENCE ONLY

©1980 BY AMP HOLLAND N.V. ALL RIGHTS RESERVED A-M-P PRODUCTS COVERED BY PATENTS AND/OR PATENTS PENDING



AMP HOLLAND N.V.
's-Hertogenbosch

3-163038-0 NATURAL

ORDER NO MATERIAL PLATING

DATE DATE

DATE DATE

DATE DATE

MATERIAL INSUL RANGE FIRST USED

SCALE 2:1 SIZE A NO C-163038

PAGE 3 OF 4

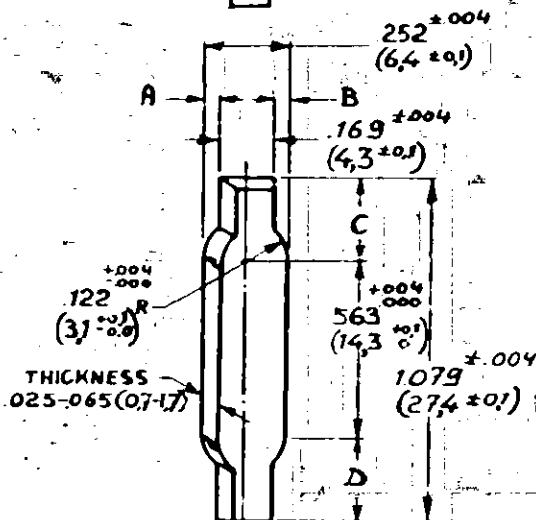
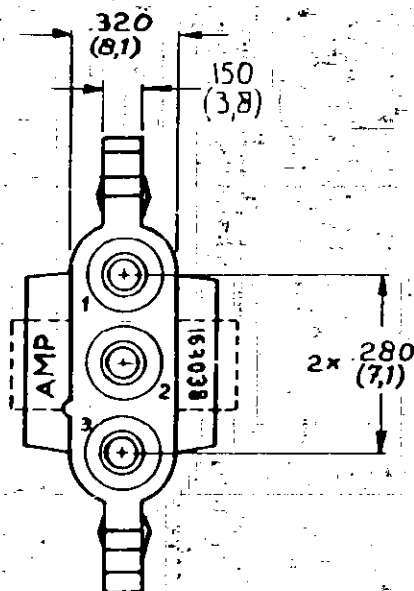
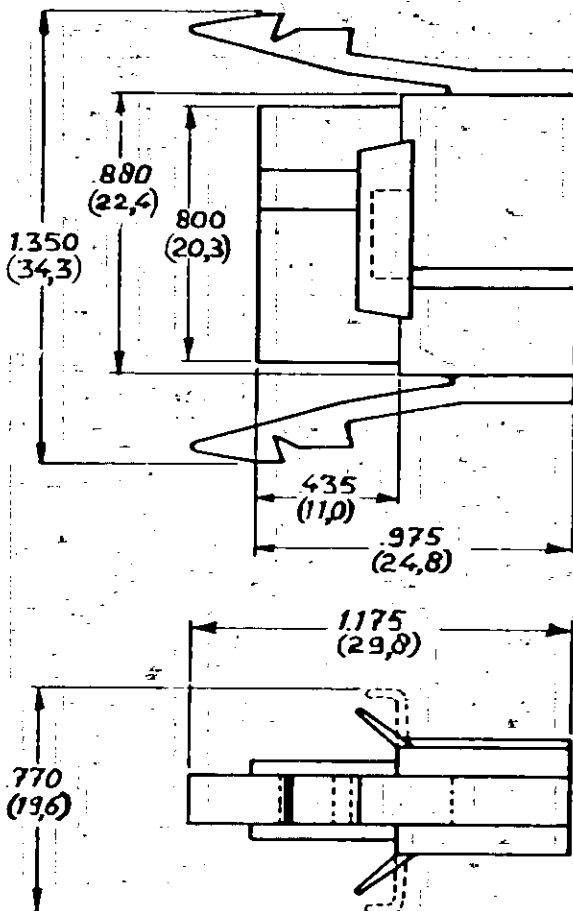
REV

3-CIRCUIT SOCKET HOUSING MATE-N-LOK

AMP 1263-01

DRAWING MADE IN AMERICAN PROJECTION

NUMBER C-163038



ANTI-RATTLE WINGS AND LOCKING BARBS CAN BE DIFFERENT OF APPEARANCE

PANEL CUT-OUT

DIMENSIONS ABB AND C&D TO BE EQUAL WITHIN (0,2) 008 THE PANEL MUST BE PUNCHED SO THAT THE HOUSING ENTERS THE PANEL IN THE SAME DIRECTION AS THE PUNCH.

4-163038-9	BLACK	
4-163038-8	GREY	
4-163038-7	VIOLET	
4-163038-6	BLUE	
4-163038-5	GREEN	
4-163038-4	YELLOW	
4-163038-3	ORANGE	
4-163038-2	RED	
4-163038-1	BROWN	
4-163038-0	NATURAL	

CUSTOMER COPY FOR REFERENCE ONLY

©1980 BY AMP-HOLLAND N.V. ALL RIGHTS RESERVED A-MP PRODUCTS COVERED BY PATENTS AND/OR PATENTS PENDING.



AMP-HOLLAND N.V.
's-Hertogenbosch

MATERIAL: DURETHAN KL1-2208

FIRST USED

ORDER NO. MATERIAL PLATING

SCALE

SIZE

NO

2:1

A

C-163038

PAGE 4 OF 4

REV

C

OR R. Visser DATE 26-73

CHK C. Tilburg DATE 26-73

NAME

3-CIRCUIT SOCKET HOUSING MATE-N-LOK

AMP 1282-H

Mouser Electronics

Authorized Distributor

Click to View Pricing, Inventory, Delivery & Lifecycle Information:

[TE Connectivity:](#)

[1-163038-0](#)