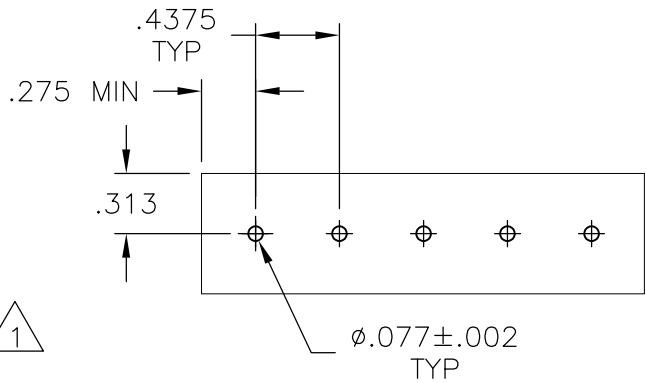
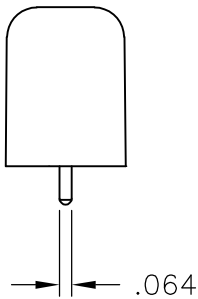
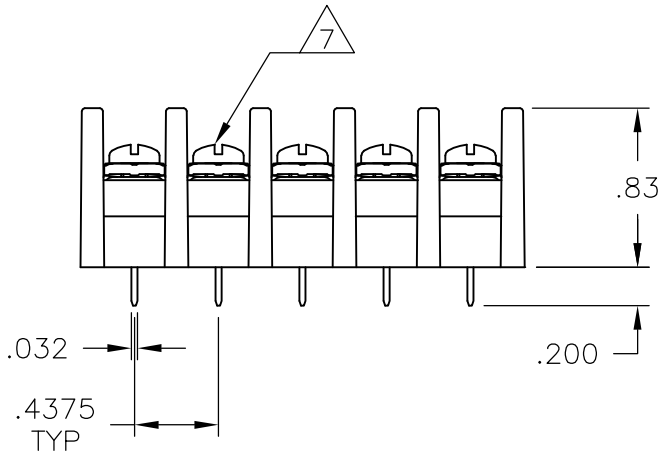
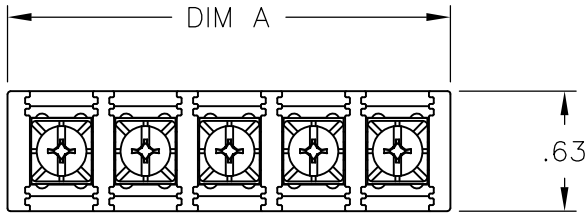


LOC	DIST	REVISIONS					
P	LTR	DESCRIPTION			DATE	DWN	APVD
		REVISED PER ECO-11-023039			20FEB12	KH	MS



RECOMMENDED PCB LAYOUT


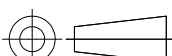
MATERIAL:
HOUSING: THERMOPLASTIC, UL94V-2, BLACK.
TERMINAL: BRASS, PLATED BRIGHT TIN OVER NICKEL.
SCREWS: 6-32, STEEL, ZINC AND CHROMATE PLATED 1
OR
NICKEL OVER COPPER PLATED 2

ELECTRICAL:
MAXIMUM CURRENT: 20A.
OPERATING VOLTAGE: 600V.
WIRE RANGE: 12 AWG MAX.

ENVIRONMENT:
OPERATING TEMP.: -60°C TO +105°C.

- 3 WHITE INK MARKING, APPROX. AS SHOWN. (SEE PAGE 2)
- 4 PRELIMINARY PART NUMBER.
- 5 OBSOLETE PARTS: OBSOLETE CIS STREAMLINING PER D.RENAUD/D.SINISI
- 6 SPECIAL MARKING SEE DETAIL.
- 7 ALL SCREWS BOTTOMED, TORQUE 2 TO 4 IN-LBS

1 4	11.937	27	SSB7FP270202	2-1546984-7
1	11.500	26	SSB7FP260202	5-1437416-4
1	11.062	25	SSB7FP250202	5-1437416-3
1 4	10.625	24	SSB7FP240202	2-1546984-4
1 4	10.187	23	SSB7FP230202	2-1546984-3
1 4	9.750	22	SSB7FP220202	2-1546984-2
1 4	9.312	21	SSB7FP210202	2-1546984-1
1	8.875	20	SSB7FP200202	5-1437416-2
1 4	8.437	19	SSB7FP190202	1-1546984-9
1	8.000	18	SSB7FP18020212	5-1437416-1
1 4	8.000	18	SSB7FP180202	1-1546984-8
1	7.562	17	SSB7FP170202	5-1437416-0
1 4	7.125	16	SSB7FP160202	1-1546984-6
1	6.687	15	SSB7FP150202	4-1437416-7
1	6.250	14	SSB7FP140202	3-796602-3
1 4	5.812	13	SSB7FP130202	1-1546984-3
1	5.375	12	SSB7FP120202	4-1437416-1
1	4.937	11	SSB7FP110202	1-1546561-2
1	4.500	10	SSB7FP100202	3-1437416-5
4	4.062	9	SSB7FP091402	2-1546984-9
6 4	4.062	9	SSB7FP09140211	2-1546984-8
1	4.062	9	SSB7FP090202	3-1437416-2
1	3.625	8	SSB7FP080202	2-1437416-8
1	3.187	7	SSB7FP070202	3-796602-2
1	2.750	6	SSB7FP060202	2-1437416-2
1	2.312	5	SSB7FP050202	1-1437416-7
1	1.875	4	SSB7FP040202	1-1437416-2
2	1.437	3	SSB7FP0320911	3-1546561-9
1 5	1.437	3	SSB7FP03020211	1546561-6
1	1.437	3	SSB7FP030202	1437416-8
1	1.000	2	SSB7FP020202	1437416-4
DIM A		NO. OF POS.	CATALOG NUMBER	PART NUMBER

THIS DRAWING IS A CONTROLLED DOCUMENT.		DWN S SCHLGEL 16FEB04		<div>TE Connectivity</div>				
		CHK S YODER 2/16/04						
DIMENSIONS: INCHES		TOLERANCES UNLESS OTHERWISE SPECIFIED:		APVD S YODER 2/16/04		NAME		
		0 PLC ± -		SSB7 ASSEMBLY				
		1 PLC ± -						
		2 PLC ± .02						
		3 PLC ± .010		SIZECAGE CODEDRAWING NORESTRICTED TO				
		4 PLC ± -						
MATERIAL		FINISH		A300779		C-3-796602-2		
-		-		WEIGHT -		-		
CUSTOMER DRAWING						SCALE	SHEET	REV
						NTS	1 OF 2	R

THIS DRAWING IS UNPUBLISHED.

RELEASED FOR PUBLICATION

— , — .

© COPYRIGHT — By —

ALL RIGHTS RESERVED.

LOC

	DIST
--	------

REVISIONS

	F
--	---

LTR

DESCRIPTION

DATE _____

	DWN
--	-----

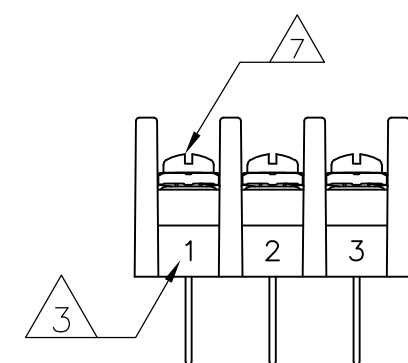
	APVD
--	------

1

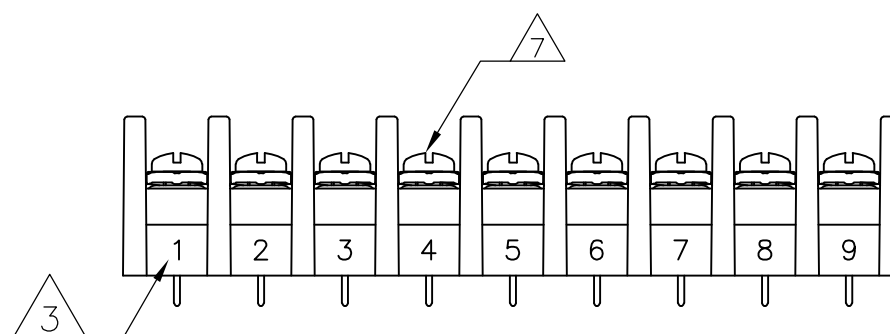
SEE SHEET 1

—

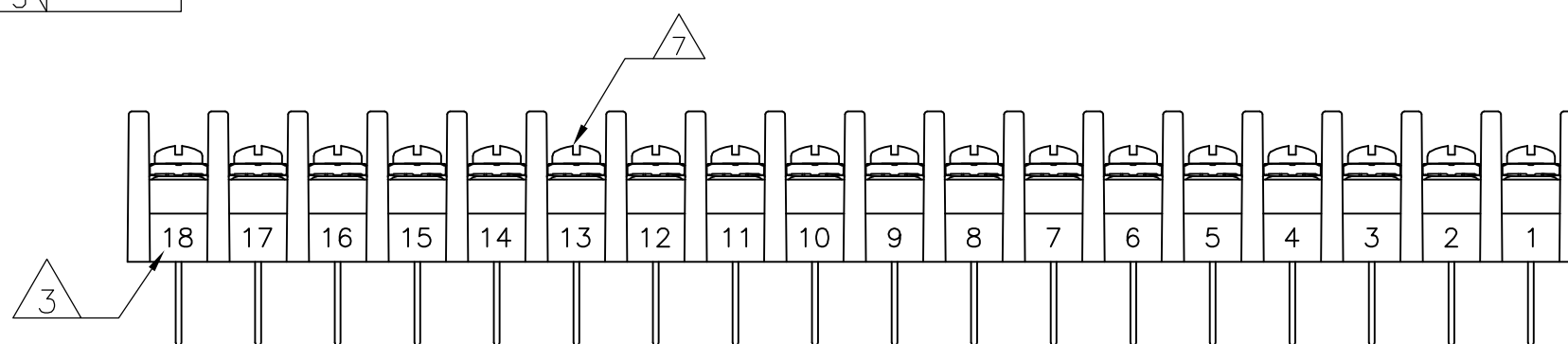
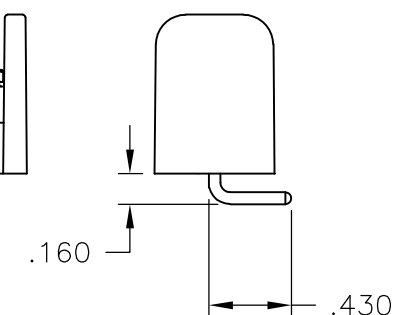
—



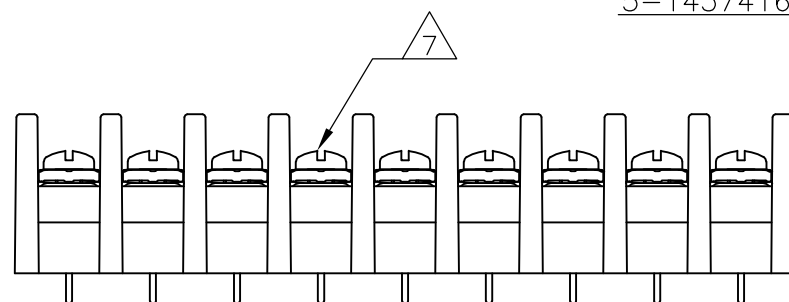
~~5 OBSOLETE 1546561-6~~



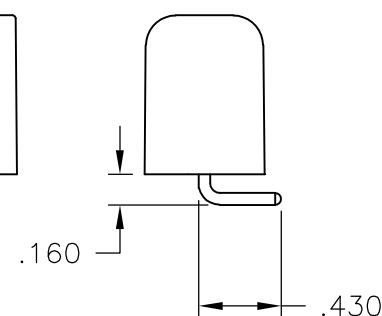
2-1546984-8



5-1437416-1



2-1546984-9



THIS DRAWING IS A CONTROLLED DOCUMENT.

DWN	16FEB04
S SCHLGE	

CHK	2/16/04
-----	---------

S YODER
APVD 2/16/04

APVD 2/16/04
S YODER

PRODUCT SPEC

APPLICATION SPEC



TE Connectivity

NAME

SSB7 ASSEMBLY

[illegible]

1470-19 (3/11)

Mouser Electronics

Authorized Distributor

Click to View Pricing, Inventory, Delivery & Lifecycle Information:

[TE Connectivity:](#)

[SSB7FP090202](#)