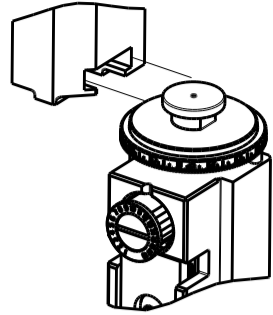


8		7	
THIS DRAWING IS UNPUBLISHED.		RELEASED FOR PUBLICATION	
2016		2016	
COPYRIGHT 2016		BY TYCO ELECTRONICS CORPORATION. ALL RIGHTS RESERVED.	
PART NUMBER	REVISION	DESCRIPTION	FEED TYPE
2836424-2	C	FINE CRIMP HEIGHT ADJUST	PNEUMATIC
7-2836424-2	C	PNEUMATIC AND CRIMP TOOLING KIT	PNEUMATIC
7-2836424-7	A	CRIMP TOOLING KIT	-

ATLANTIC VERSION TERMINATOR  
INTERFACE ADAPTER



APPLICATOR DATA		
CRIMP	SIZE	TYPE
WIRE	1.00 mm [.039]	F
INSUL	1.07 mm [.042]	F
APPLICATOR INSTRUCTIONS 408-35042		

TERMINAL DATA: TE TERMINAL		TE CRIMP SPECIFICATION	
TERMINAL NAME: AMP 1.5 MINI CT CONTACT			
WIRE STRIP LENGTH 1.50-1.90 mm [.059-.075 IN]		INSULATION DIAMETER RANGE Ø0.85-1.03 mm [.033-.041 IN]	
TERMINAL APPLICATION SPECIFICATION		114-51010	
TERMINALS APPLIED			
TE TERMINAL	TE TERMINAL	TE TERMINAL	TE TERMINAL
84727-1	84727-2		

WIRE SIZE	CRIMP HEIGHT mm [INCH]	CRIMP HEIGHT REFERENCE SETTING
24 AWG OR 0.23mm2	0.75+/-0.03 [.030+/- .001]	4.8
26 AWG OR 0.14mm2	0.69+/-0.03 [.027+/- .001]	5.5
28 AWG OR 0.09mm2	0.64+/-0.03 [.025+/- .001]	5.9



- RECOMMENDED SPARE PARTS
- REFER TO SUPPLIED INSTRUCTION SHEET FOR CLEANING, LUBRICATION AND STORAGE OF APPLICATOR.
- APPLY PART NUMBER 2-23419-6 LOCTITE TO THREADS OF ITEM 242.
- CRIMP HEIGHT REFERENCE SETTING WAS THE SETTING USED WHEN THE APPLICATOR WAS QUALIFIED AT THE FACTORY. ADJUSTMENT MAY BE NECESSARY WHEN RUNNING APPLICATOR IN THE FIELD.
- TERMINAL PITCH NOT COMPATIBLE WITH MECHANICAL FEED.
6. UNLESS SPECIFIED OTHERWISE TORQUE VALUES SHALL BE USED PER DOCUMENT, 101-35000.

\*WARNING  
ON INSTALLATION, SET WIRE DISC TO CRIMP HEIGHT REFERENCE SETTING FOR LARGEST WIRE SIZE. CRIMP HEIGHT REFERENCE SETTINGS GREATER THAN THE VALUE SHOWN MAY CAUSE DAMAGE TO THE CRIMP TOOLING, REFER TO THE INSTRUCTION SHEET FOR PROPER SETUP AND ADJUSTMENTS.

ATLANTIC VERSION  
Shown on sheets 1 of 4 & 2 of 4  
(Pacific version shown on sheets 3 of 4 & 4 of 4)

LOC	DIST	REVISIONS				
		P	LTR	DESCRIPTION	DATE	OWN APVD
A	66	I		PRELIMINARY	11AUG2016	MEH TE
		A		RELEASED	24OCT2016	MEH GB
		B		ECR-20-002676	25FEB2020	FJ TE
		C		ECR-20-005765	21APR2020	FZ GB

-	1	1	2119641-1	FEED CAM, AIR FEED	248
-	1	1	2119082-5	CAM, SNAIL, INSULATION ADJUSTMENT	244
-	1	1	2079764-1	WASHER, WAVE SPRING, CREST-TO-CREST	243
-	1	1	2119083-1	RETAINER, INSULATION DIAL	242
-	1	1	7-18023-7	SCR, SKT HD CAP M3 X 4.0	241
-	1	1	2844940-1	AIR FEED MODULE	238
-	REF	REF	994970-2	COUNTER, MAGNETIC	164
-	1	1	2844908-1	SCREW, LOCKING	99
-	1	1	2844907-1	POST, LOCKING	98
-	1	1	1-455888-7	SPACER, CRIMPER	82
-	1	1	1803607-3	DOCUMENTATION PACKAGE	71
-	1	1	2119791-9	DEPRESSOR, WIRE	70
-	1	1	2119740-1	TAG, IDENTIFICATION	67
-	2	2	2168078-1	SCREW, DRIVE, RH, RoHS, 2 x .188	66
-	1	1	2168083-2	SCR, SKT HD CAP, RoHS, M4 X 8.0	60
-	1	1	5-18022-5	SCR, HEX HD CAP, M4 X 6.0	59
-	1	1	1-1338683-3	FEED PAWL	56
-	4	4	2168083-3	SCR, SKT HD CAP, RoHS, M4 X 12.0	54
-	1	1	18023-9	SCR, SKT HD CAP M4 X 6.0	49
-	1	1	1803583-9	APPLICATOR BASIC ASSEMBLY, SF	46
-	1	1	1803515-1	RAM ASSEMBLY, SF ATLANTIC	44
-	1	1	1803602-1	SCR, BHSC, RoHS (M8 X 25)	41
-	1	1	3-1752356-9	SUPPORT, TERMINAL	34
-	2	2	2079383-5	SCR, BHSC, RoHS (M4 X 20)	33
-	2	2	2-2844962-3	SPACER, CYLINDRICAL, STRIP GUIDE	30
-	1	1	2844992-4	ASSEMBLY, STRIP GUIDE	29
-	1	1	240792-5	DRAG, TERMINAL	25
-	1	1	1320928-2	STRIP GUIDE	24
-	1	1	2168083-2	SCR, SKT HD CAP, RoHS, M4 X 8.0	21
-	2	2	1-18028-2	WASHER, FLAT, REG M4	20
-	1	1	2119533-4	STRIPPER, SIDE FEED	19
-	1	1	2119806-1	INSERT, SHEAR	13
-	1	1	3-22280-3	SPRING, COMPRESSION	12
-	1	1	1-356885-5	STOP, SHEAR	11
-	1	1	2119805-1	SHEAR HOLDER, FRONT	10
-	1	1	1803095-6	FLOATING SHEAR, FRONT -	9
1	2	1	3-1803252-4	ANVIL, COMBINATION	8
-	-	-	-	-	7
-	-	-	-	-	6
-	1	1	2119757-1	DEPRESSOR, SHEAR	5
-	1	1	4-238011-3	BLOCK, CRIMPER SPACER	4
1	2	1	9-1803017-3	CRIMPER, INSULATION F	3
-	1	1	455888-4	SPACER, CRIMPER	2
1	2	1	6-1633713-9	CRIMPER, WIRE PREMIUM	1

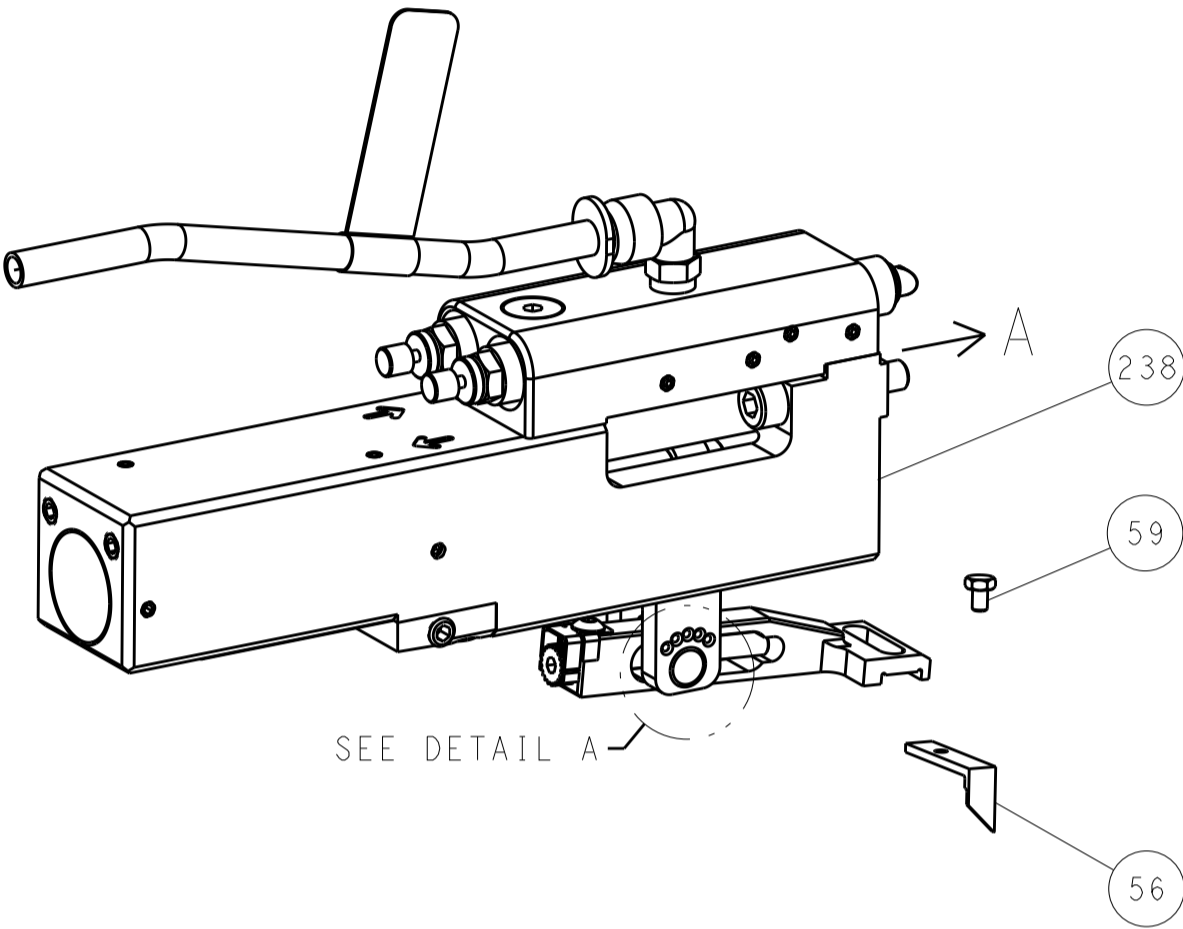
-77-72	-2	PART NO	DESCRIPTION	ITEM NO
Customer Accessible Production Drawing				

THIS DRAWING IS UNPUBLISHED. IT IS SUBJECT TO CHANGE WITHOUT NOTICE. IT IS SUBJECT TO CHANGE WITHOUT NOTICE. IT IS SUBJECT TO CHANGE WITHOUT NOTICE. IT IS SUBJECT TO CHANGE WITHOUT NOTICE. IT IS SUBJECT TO CHANGE WITHOUT NOTICE.		OWN	11AUG2016	TE Connectivity	
DIMENSIONS:		CHK	11AUG2016	Harrisburg, PA 17105-3608	
mm		APVD	11AUG2016	NAME	
TOLERANCES UNLESS OTHERWISE SPECIFIED:		PRODUCT SPEC		Ocean Side Feed	
0 PLC ±		APPLICATION SPEC		Applicator	
1 PLC ±		WEIGHT		-	
2 PLC ±		SCALE		1:2	
3 PLC ±		SHEET		1 OF 4	
4 PLC ±		REV		C	
ANGLES		FINISH		-	
MATERIAL		Customer Accessible Production Drawing		SCALE 1:2	
-		SHEET 1 OF 4		REV C	
-		FINISH		-	

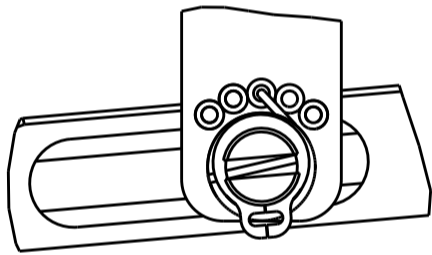
LOC	DIST	REVISIONS					
		P	LTR	DESCRIPTION	DATE	DWN	APVD
A	66	-	-	SEE SHEET 1	-	-	-

# FEED TYPE

## PNEUMATIC

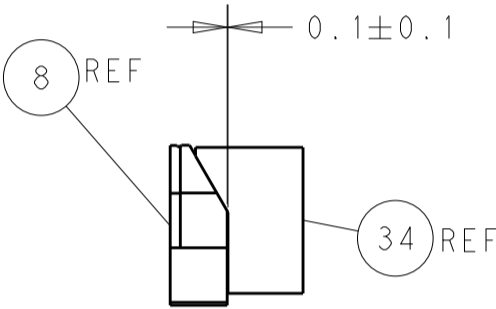
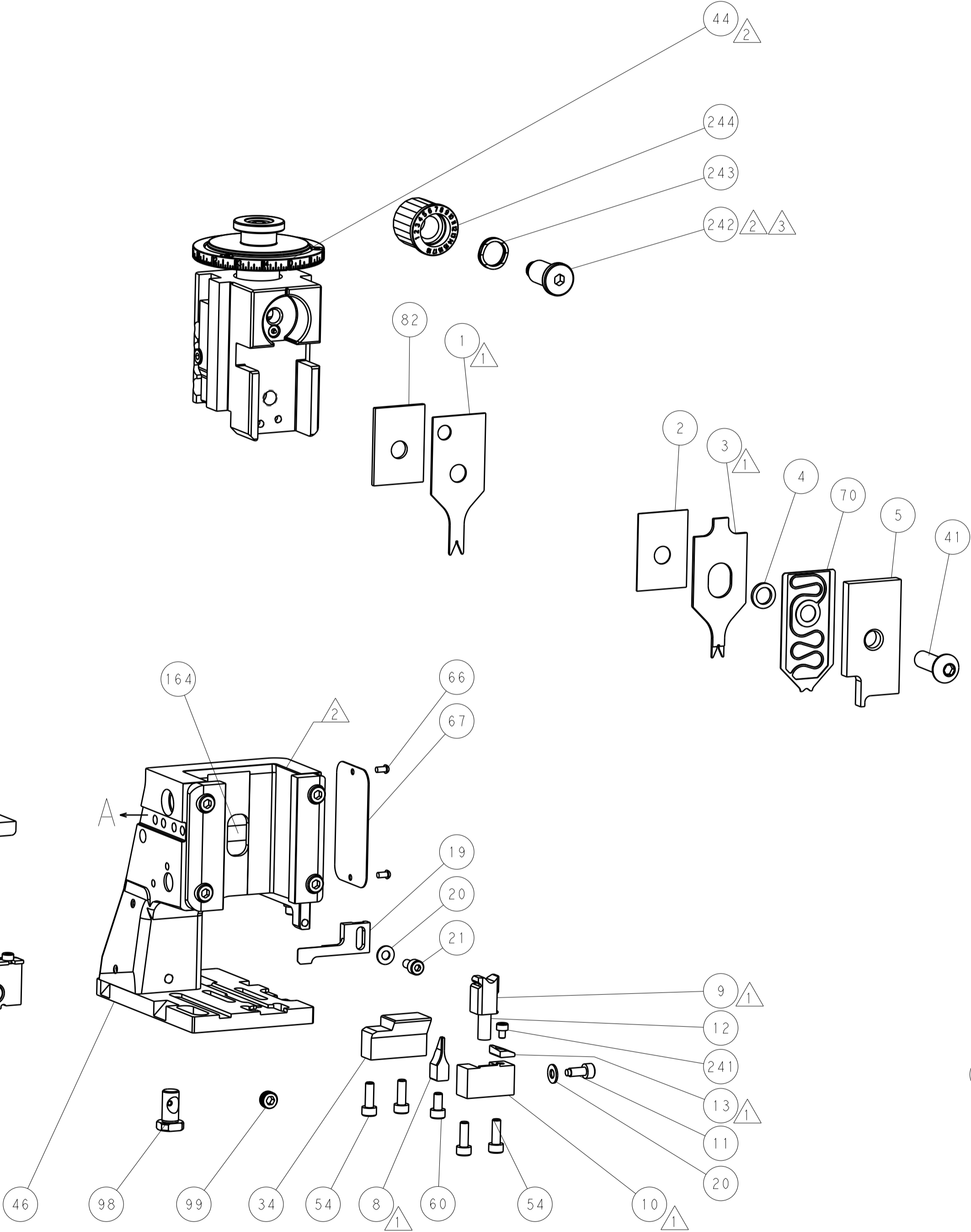
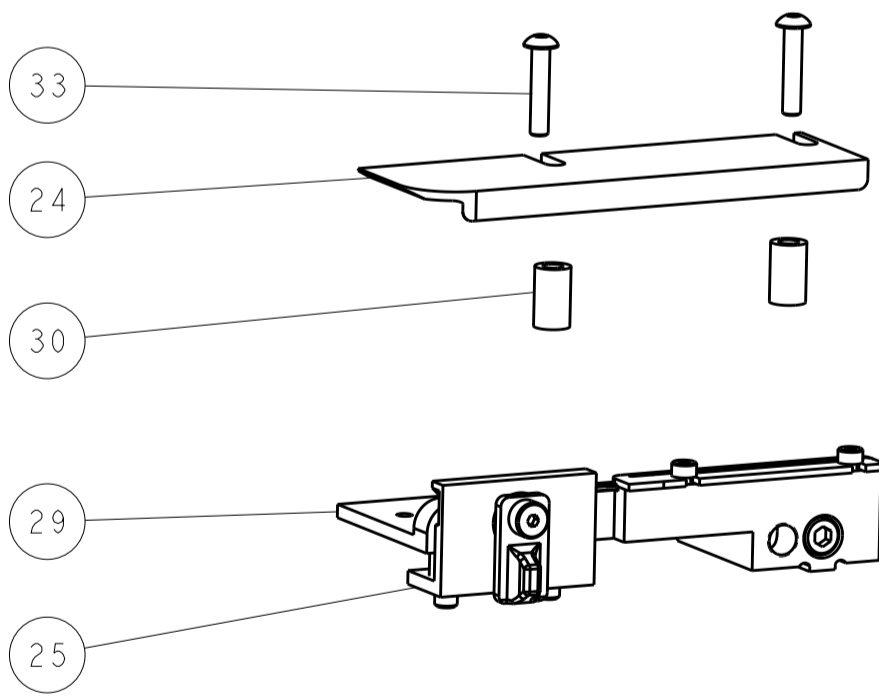
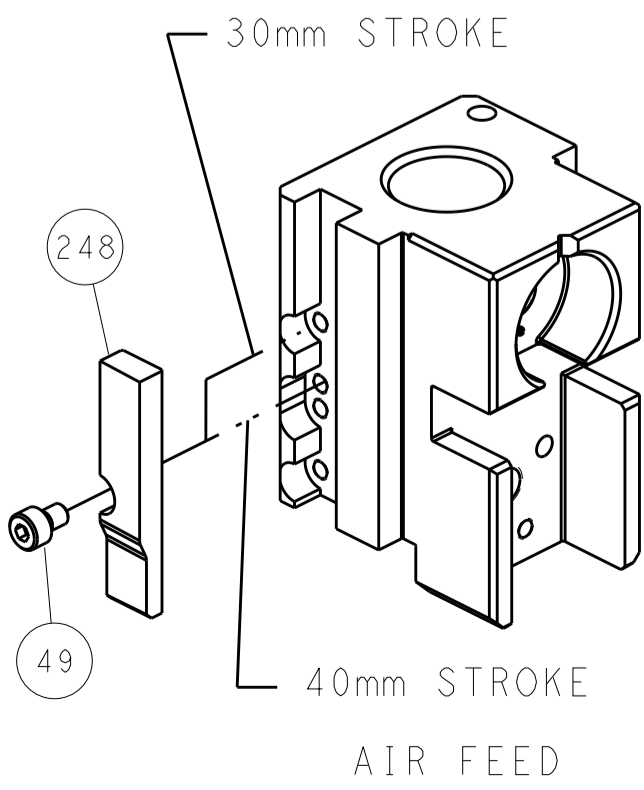


## FEED SPRING SETTING POSITION (SHOWN FROM REAR SIDE)

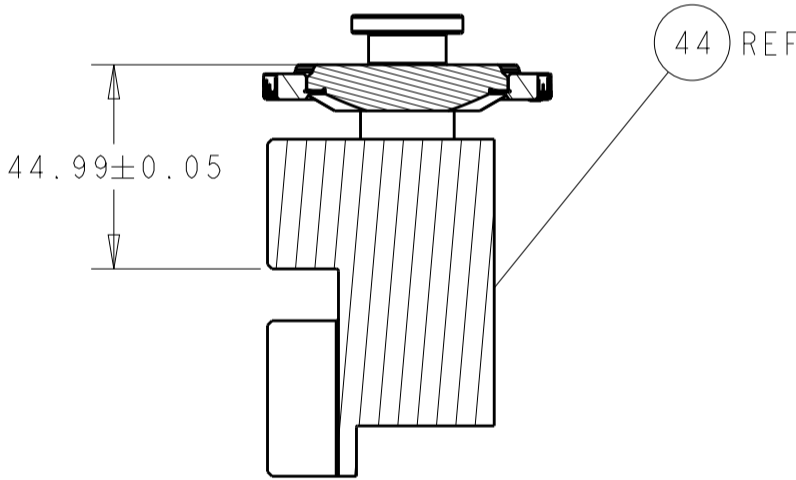


DETAIL A

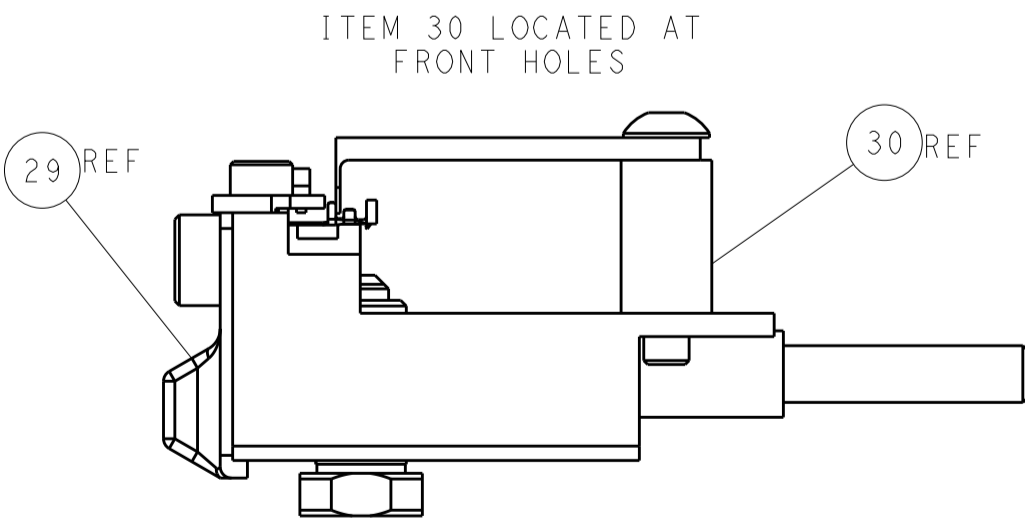
# CAM POSITION



TERMINAL SUPPORT LOCATION




RAM SET-UP



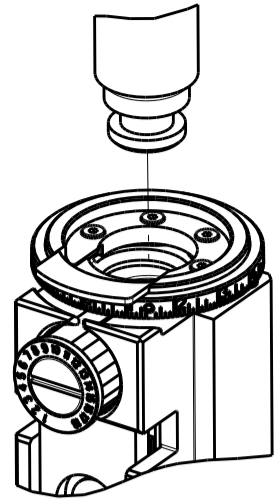
FEED TRACK POSITION  
GUIDE BY INSULATION BARREL

ATLANTIC VERSION  
Shown on sheets 1 of 4 & 2 of 4  
(Pacific version shown on sheets 3 of 4 & 4 of 4)

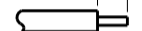

THIS DRAWING IS UNPUBLISHED. IT IS SUBJECT TO CHANGE AND SHOULD BE CONTACTED FOR THE LATEST REVISION.				DWN	M. HERR	11AUG2016	 TE Connectivity Harrisburg, PA 17105-3608				
				CHKD	T. ELBIN	11AUG2016					
				APVD	T. ELBIN	11AUG2016	NAME				
				PRODUCT SPEC			Ocean Side Feed Applicator				
				APPLICATION SPEC							
				WEIGHT			SIZE		CASE CODE	DRAWING NO	RESTRICTED TO
				Customer Accessible Production Drawing			A   00779		C = 2836424		-
							SCALE		1:2	SHEET	2 of 4
										REV	C

8		7	
THIS DRAWING IS UNPUBLISHED.		RELEASED FOR PUBLICATION	
2016		2016	
© COPYRIGHT 2016 BY TYCO ELECTRONICS CORPORATION. ALL RIGHTS RESERVED.			
PART NUMBER	REVISION	DESCRIPTION	FEED TYPE
2-2836424-2	C	FINE CRIMP HEIGHT ADJUST	PNEUMATIC
7-2836424-7	A	CRIMP TOOLING KIT	-

PACIFIC VERSION TERMINATOR  
INTERFACE ADAPTER



APPLICATOR DATA		
CRIMP	SIZE	TYPE
WIRE	1.00 mm [.039]	F
INSUL	1.07 mm [.042]	F
APPLICATOR INSTRUCTIONS 408-35042		

TERMINAL DATA: TE TERMINAL		TE CRIMP SPECIFICATION	
TERMINAL NAME: AMP 1.5 MINI CT CONTACT			
WIRE STRIP LENGTH 1.50-1.90 mm [.059-.075 IN]			INSULATION DIAMETER RANGE Ø0.85-1.03 mm [.033-.041 IN]
TERMINAL APPLICATION SPECIFICATION	114-51010	-	-
	-	-	-
TERMINALS APPLIED 			
TE TERMINAL	TE TERMINAL	TE TERMINAL	TE TERMINAL
84727-1	84727-2		

WIRE SIZE	CRIMP HEIGHT mm [INCH]	CRIMP HEIGHT REFERENCE SETTING
24 AWG OR 0.23mm2	0.75+/-0.03 [.030+/- .001]	4.8
26 AWG OR 0.14mm2	0.69+/-0.03 [.027+/- .001]	5.5
28 AWG OR 0.09mm2	0.64+/-0.03 [.025+/- .001]	5.9



- 1 RECOMMENDED SPARE PARTS
- 2 REFER TO SUPPLIED INSTRUCTION SHEET FOR CLEANING, LUBRICATION AND STORAGE OF APPLICATOR.
- 3 APPLY PART NUMBER 2-23419-6 LOCTITE TO THREADS OF ITEM 242.
- 4 CRIMP HEIGHT REFERENCE SETTING WAS THE SETTING USED WHEN THE APPLICATOR WAS QUALIFIED AT THE FACTORY. ADJUSTMENT MAY BE NECESSARY WHEN RUNNING APPLICATOR IN THE FIELD.
- 5 TERMINAL PITCH NOT COMPATIBLE WITH MECHANICAL FEED.
6. UNLESS SPECIFIED OTHERWISE TORQUE VALUES SHALL BE USED PER DOCUMENT, 101-35000.

\*WARNING  
ON INSTALLATION, SET WIRE DISC TO CRIMP HEIGHT REFERENCE SETTING FOR LARGEST WIRE SIZE. CRIMP HEIGHT REFERENCE SETTINGS GREATER THAN THE VALUE SHOWN MAY CAUSE DAMAGE TO THE CRIMP TOOLING, REFER TO THE INSTRUCTION SHEET FOR PROPER SETUP AND ADJUSTMENTS.

PACIFIC VERSION  
Shown on sheets 3 of 4 & 4 of 4  
(Atlantic version shown on sheets 1 of 4 & 2 of 4)

LOC	DIST	REVISIONS				
		P	LTR	DESCRIPTION	DATE	OWN
A	66	-	-	SEE SHEET 1	-	-

	-	1	2119082-5	CAM, SNAIL, INSULATION ADJUSTMENT	244
	-	1	2079764-1	WASHER, WAVE SPRING, CREST-TO-CREST	243
3	-	1	2119083-1	RETAINER, INSULATION DIAL	242
	-	1	7-18023-7	SCR, SKT HD CAP M3 X 4.0	241
	-	1	2844940-1	AIR FEED MODULE	238
	-	REF	994970-2	COUNTER, MAGNETIC	164
	-	1	2119641-2	FEED CAM, AIR FEED	151
	-	1	2168083-8	SCR, SKT HD CAP, RoHS, M4 X 16	144
	-	4	2168083-9	SCR, SKT HD CAP, RoHS, M4 X 20	143
	-	1	1-1803583-0	APPLICATOR BASIC ASSEMBLY, SF	141
	-	1	1803516-1	RAM ASSEMBLY, SF PACIFIC	140
	-	1	2844908-1	SCREW, LOCKING	99
	-	1	2844907-1	POST, LOCKING	98
	-	1	1-455888-7	SPACER, CRIMPER	82
	-	1	1803607-3	DOCUMENTATION PACKAGE	71
	-	1	2119791-9	DEPRESSOR, WIRE	70
	-	1	2119740-1	TAG,IDENTIFICATION	67
	-	2	2168078-1	SCREW, DRIVE, RH, RoHS, 2 x .188	66
	-	1	5-18022-5	SCR, HEX HD CAP, M4 X 6.0	59
	-	1	1-1338683-3	FEED PAWL	56
	-	1	18023-9	SCR, SKT HD CAP M4 X 6.0	49
	-	1	1803602-1	SCR, BHSC, RoHS (M8 X 25)	41
	-	1	3-1752356-9	SUPPORT, TERMINAL	34
	-	2	2079383-5	SCR, BHSC, RoHS (M4 X 20)	33
	-	2	2-2844962-3	SPACER, CYLINDRICAL, STRIP GUIDE	30
	-	1	2844992-4	ASSEMBLY, STRIP GUIDE	29
	-	1	240792-5	DRAG, TERMINAL	25
	-	1	1320928-2	STRIP GUIDE	24
	-	1	2168083-2	SCR, SKT HD CAP, RoHS, M4 X 8.0	21
	-	2	1-18028-2	WASHER, FLAT, REG M4	20
	-	1	2119533-4	STRIPPER, SIDE FEED	19
1	-	1	2119806-1	INSERT, SHEAR	13
	-	1	3-22280-3	SPRING, COMPRESSION	12
	-	1	1-356885-5	STOP, SHEAR	11
1	-	1	2119805-1	SHEAR HOLDER, FRONT	10
1	-	1	1803095-6	FLOATING SHEAR, FRONT -	9
1	1	1	3-1803252-4	ANVIL, COMBINATION	8
	-	-	-	-	7
	-	-	-	-	6
	-	1	2119757-1	DEPRESSOR, SHEAR	5
	-	1	4-238011-3	BLOCK, CRIMPER SPACER	4
1	1	1	9-1803017-3	CRIMPER, INSULATION F	3
	-	1	455888-4	SPACER, CRIMPER	2
1	1	1	6-1633713-9	CRIMPER, WIRE PREMIUM	1
	-77	-22	PART NO	DESCRIPTION	ITEM NO

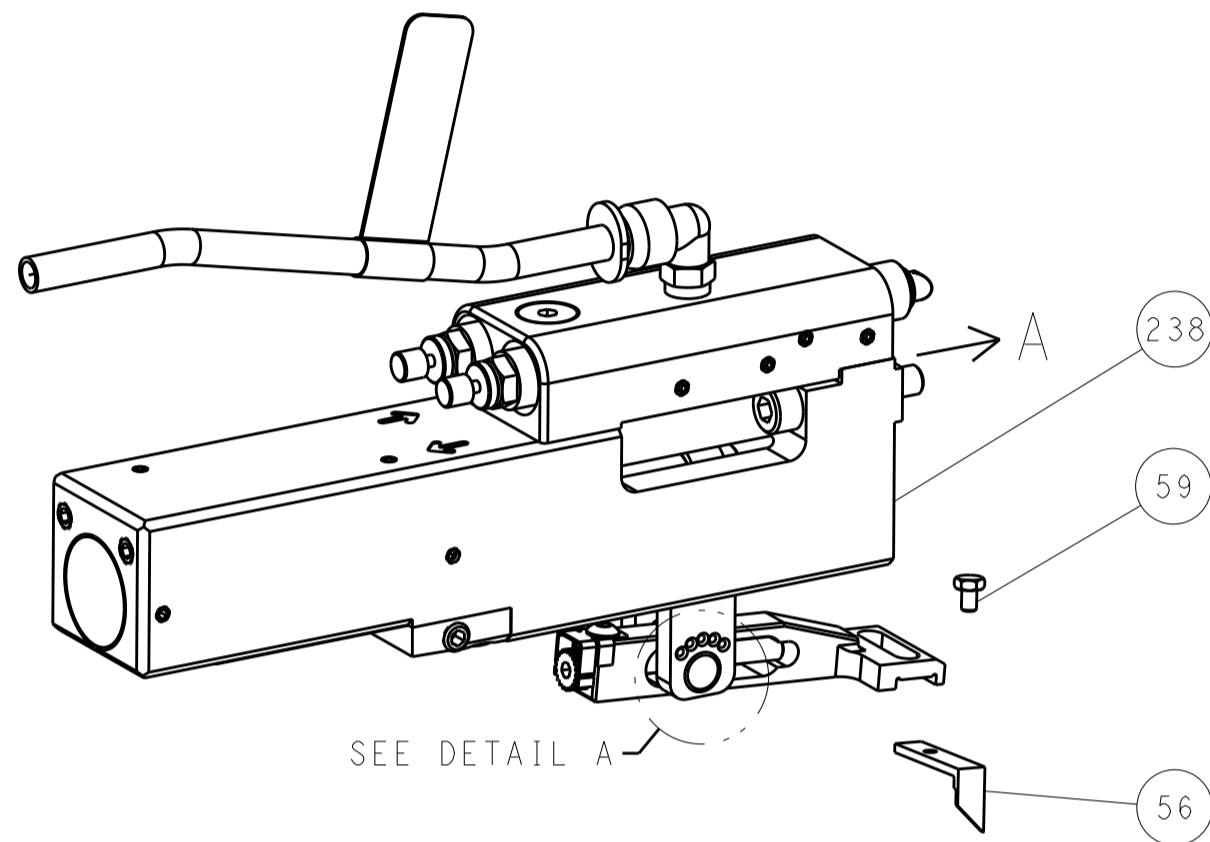
THIS DRAWING IS UNPUBLISHED. IT IS SUBJECT TO CHANGE WITHOUT NOTICE. THE USER SHALL BE RESPONSIBLE FOR VERIFYING THE LATEST REVISION. IF IT IS SUBJECT TO CHANGE, THE USER SHALL BE RESPONSIBLE FOR VERIFYING THE LATEST REVISION.		OWN CHK APVD	DATE 11AUG2016 11AUG2016 11AUG2016	TE Connectivity Harrisburg, PA 17105-3608	
DIMENSIONS: mm		TOLERANCES UNLESS OTHERWISE SPECIFIED: 0 PLC ± 1 PLC ± 2 PLC ± 3 PLC ± 4 PLC ± ANGLES ± FINISH		NAME Ocean Side Feed Applicator	
MATERIAL		WEIGHT		RESTRICTED TO	
-		-		-	
Customer Accessible Production Drawing		SCALE		SHEET 3 OF 4	
				REV C	

SHEETS 1 & 2 ARE NOT REQUIRED FOR PACIFIC VERSION

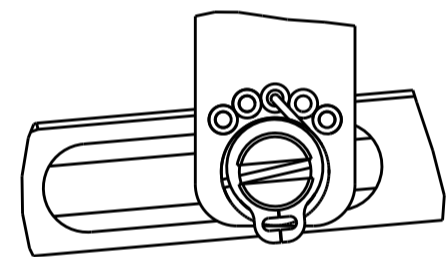
LOC	DIST	REVISIONS					
		P	LTR	DESCRIPTION	DATE	DWN	APVD
A	66	-	-	SEE SHEET 1	-	-	-

FEED TYPE

PNEUMATIC

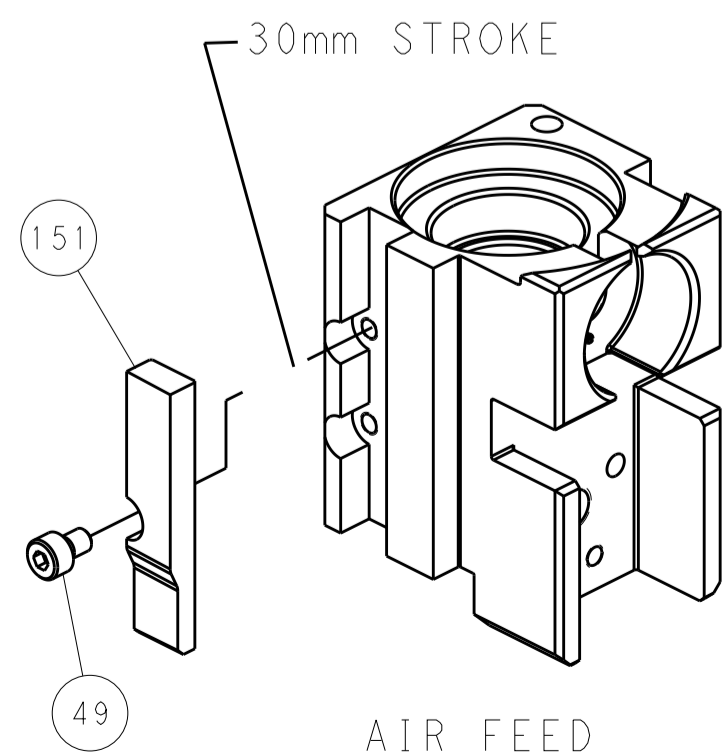


FEED SPRING SETTING POSITION  
(SHOWN FROM REAR SIDE)

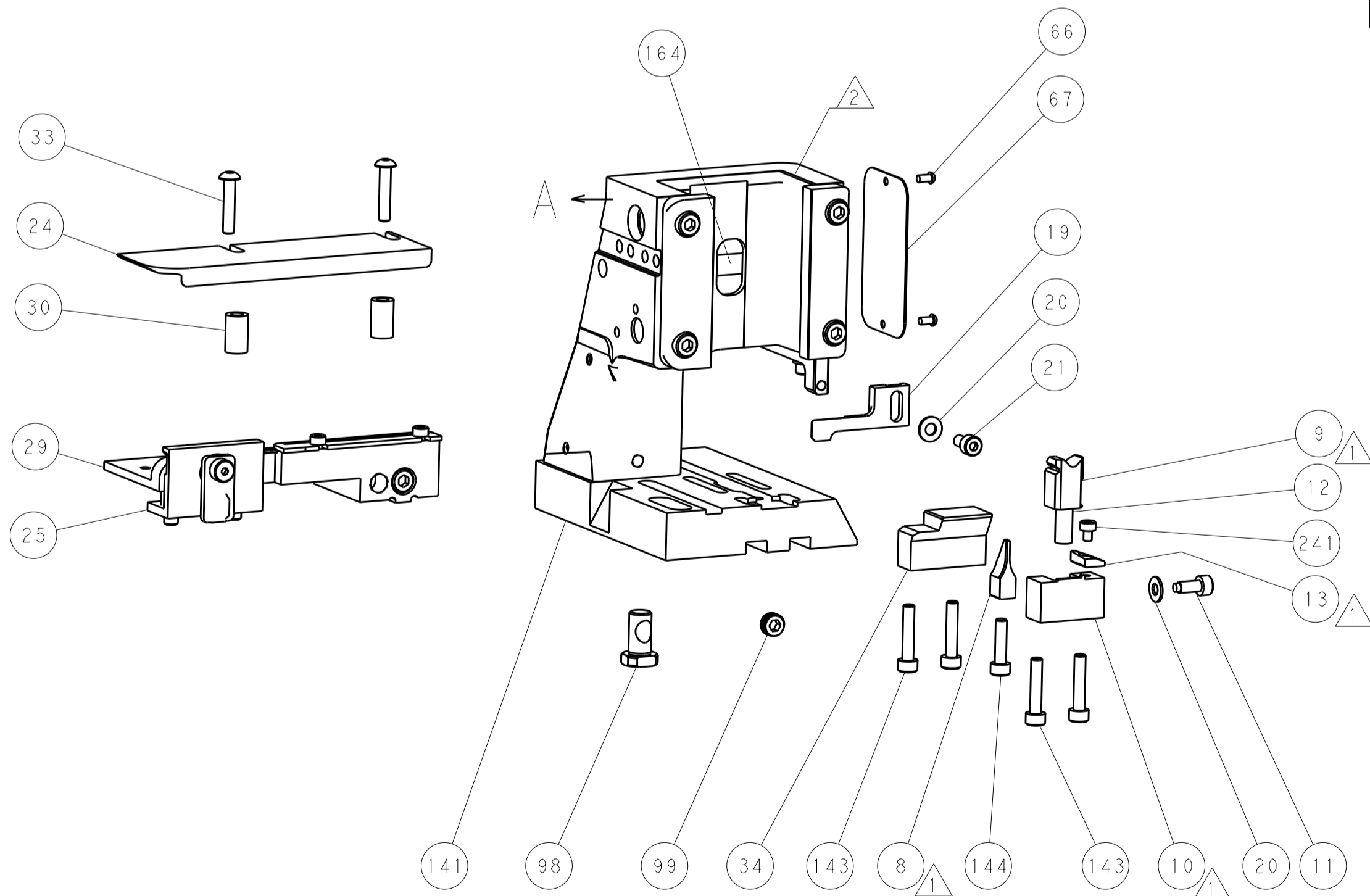


DETAIL A

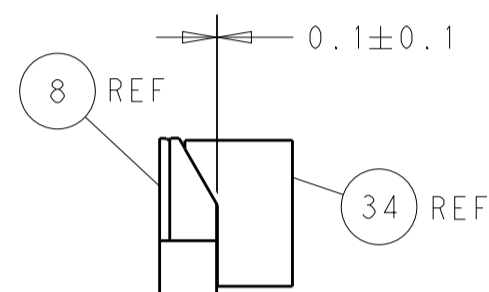
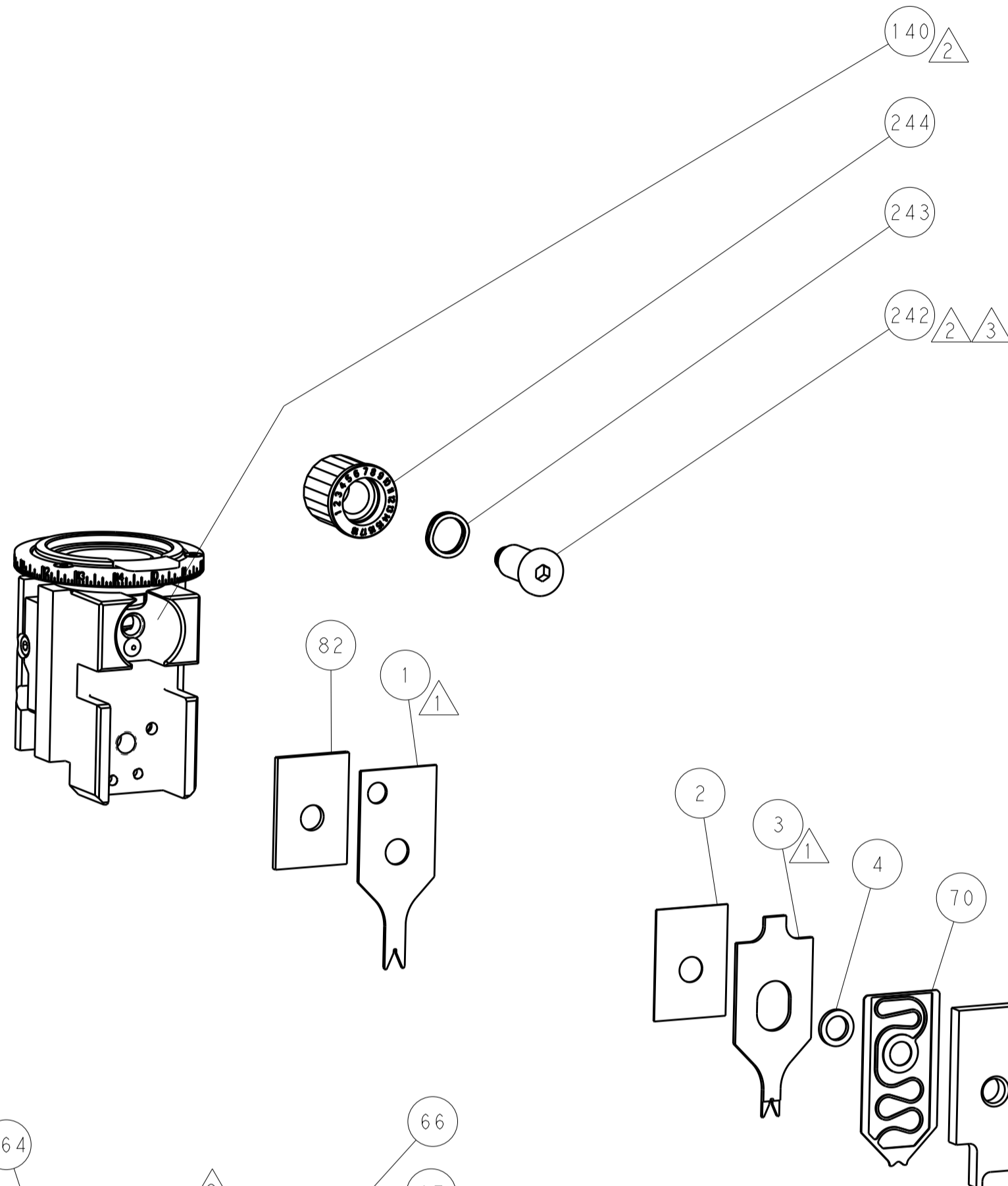
CAM POSITION



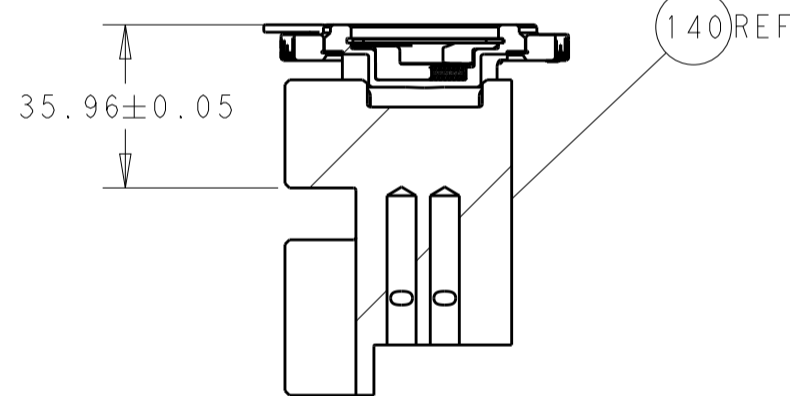
AIR FEED



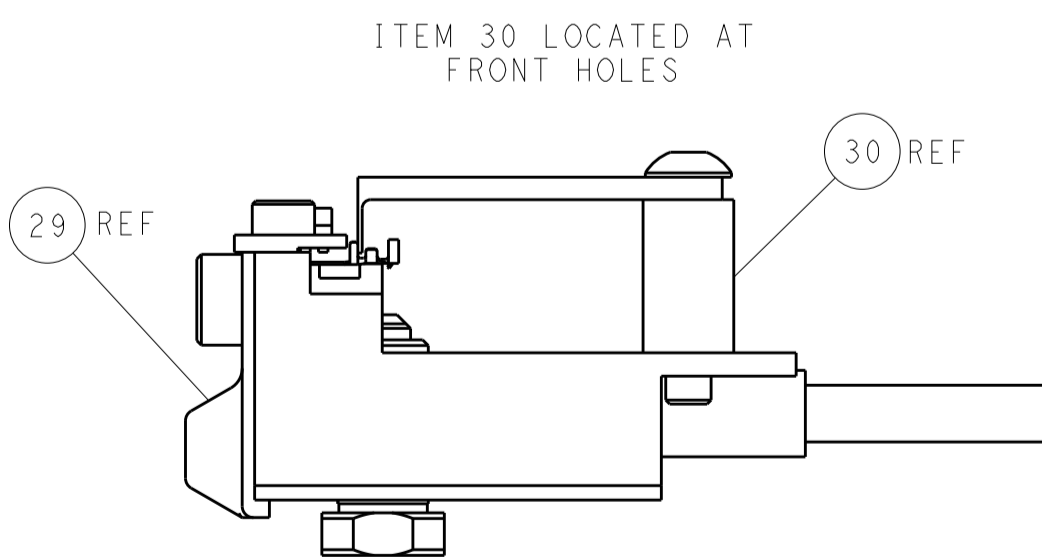
PACIFIC VERSION  
Shown on sheets 3 of 4 & 4 of 4  
(Atlantic version shown on sheets 1 of 4 & 2 of 4)



TERMINAL SUPPORT LOCATION



RAM SET-UP



FEED TRACK POSITION  
GUIDE BY INSULATION BARREL

THIS DRAWING IS UNPUBLISHED. IT IS SUBJECT TO CHANGE WITHOUT NOTICE. ANY CHANGES TO THIS DRAWING MUST BE APPROVED BY THE DESIGNING ORGANIZATION. IT IS SUBJECT TO CHANGE WITHOUT NOTICE. ANY CHANGES TO THIS DRAWING MUST BE APPROVED BY THE DESIGNING ORGANIZATION.				OWN: M. HERR 11AUG2016				TE Connectivity			
DIMENSIONS:				CHK: T. ELBIN 11AUG2016				Harrisburg, PA 17105-3608			
mm				APVD: T. ELBIN 11AUG2016				NAME: Ocean Side Feed			
TOLERANCES UNLESS OTHERWISE SPECIFIED:				PRODUCT SPEC:				APPLICATOR:			
0 PLC ±.1				APPLICATION SPEC:				SIZE: A1			
1 PLC ±.1				WEIGHT:				CAGE CODE: 00779			
2 PLC ±.1				FINISH:				DRAWING NO: 2836424			
3 PLC ±.1				MATERIAL:				Customer Accessible Production Drawing			
4 PLC ±.1				SCALE: 1:2				SHEET 4 OF 4			
ANGLES:				REV: C							

# Mouser Electronics

Authorized Distributor

Click to View Pricing, Inventory, Delivery & Lifecycle Information:

[TE Connectivity:](#)

[2836424-2](#)