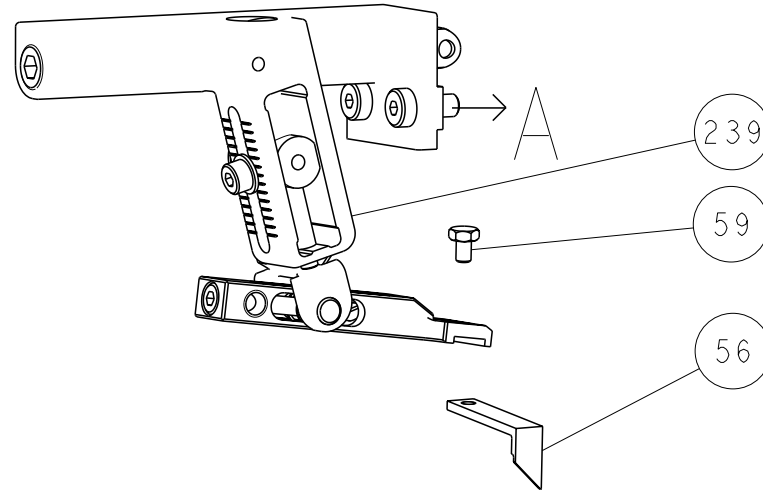
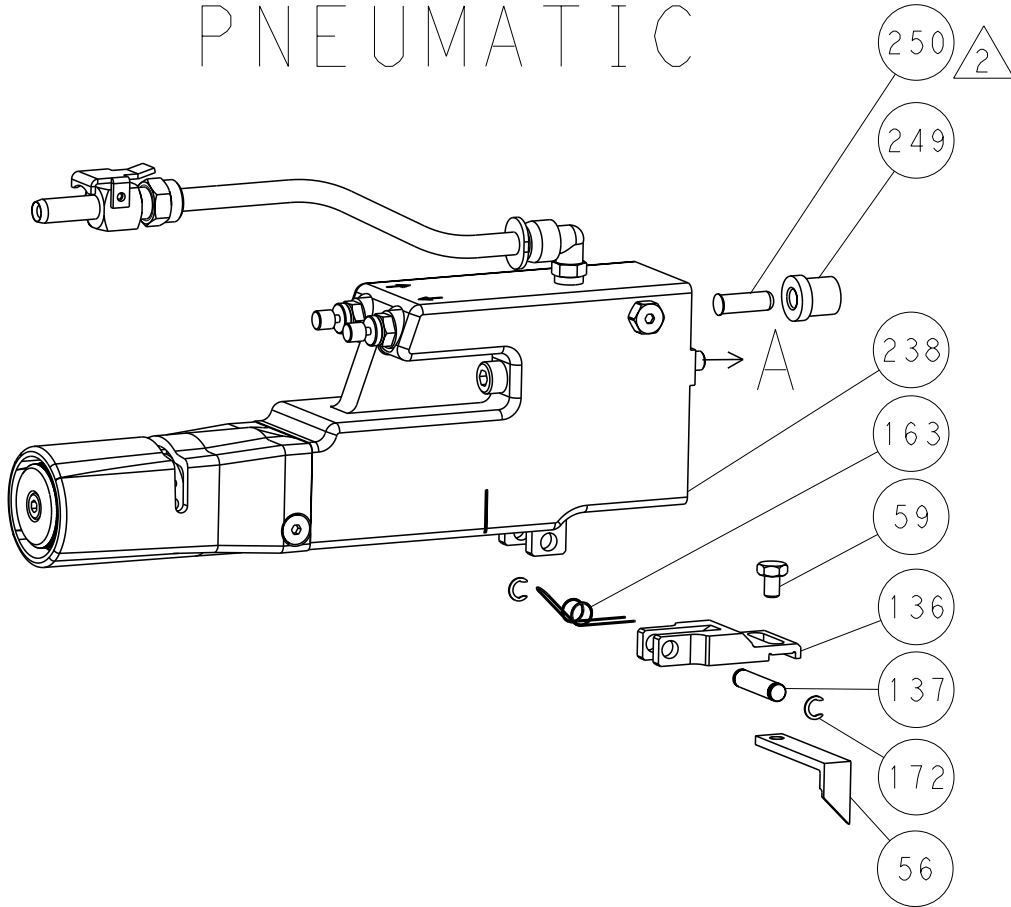


LOC		DIST		REVISIONS					
A		66		P	LYR	DESCRIPTION	DATE	DWN	APVD
					-	SEE SHEET 1	-	-	-

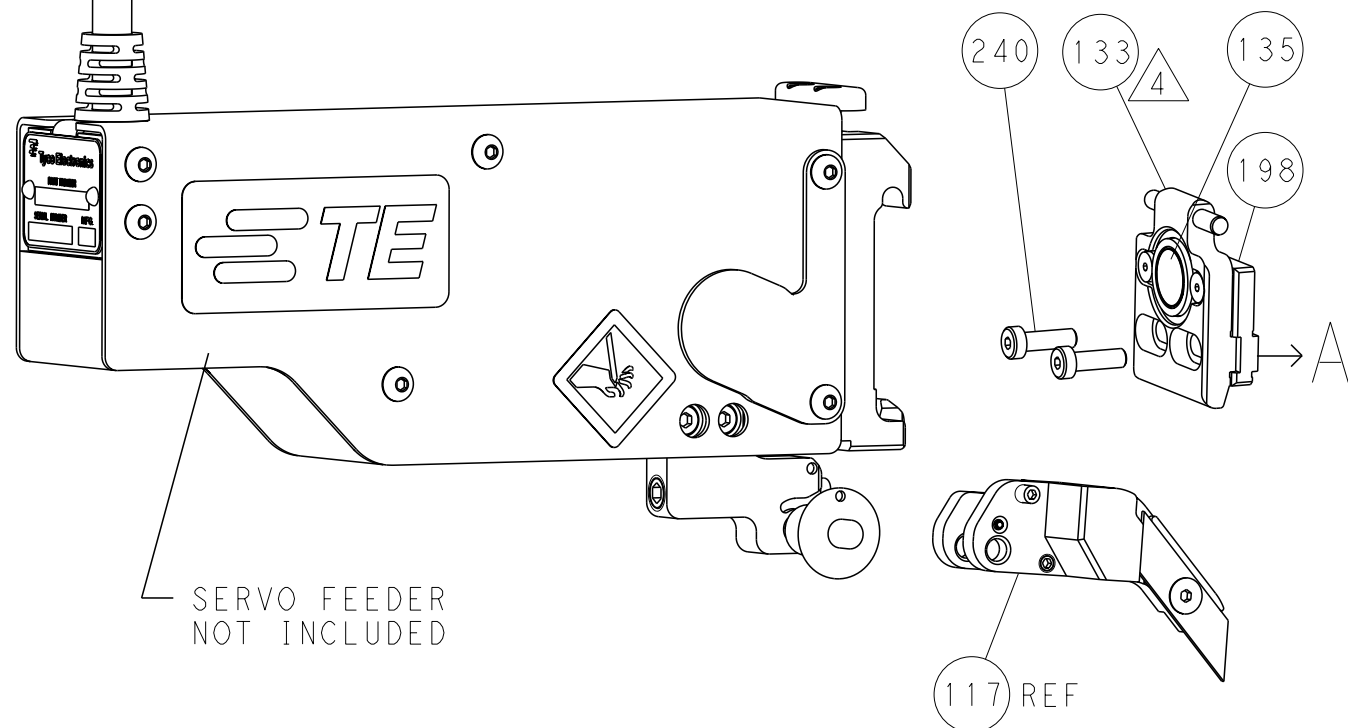
FEED TYPE
MECHANICAL



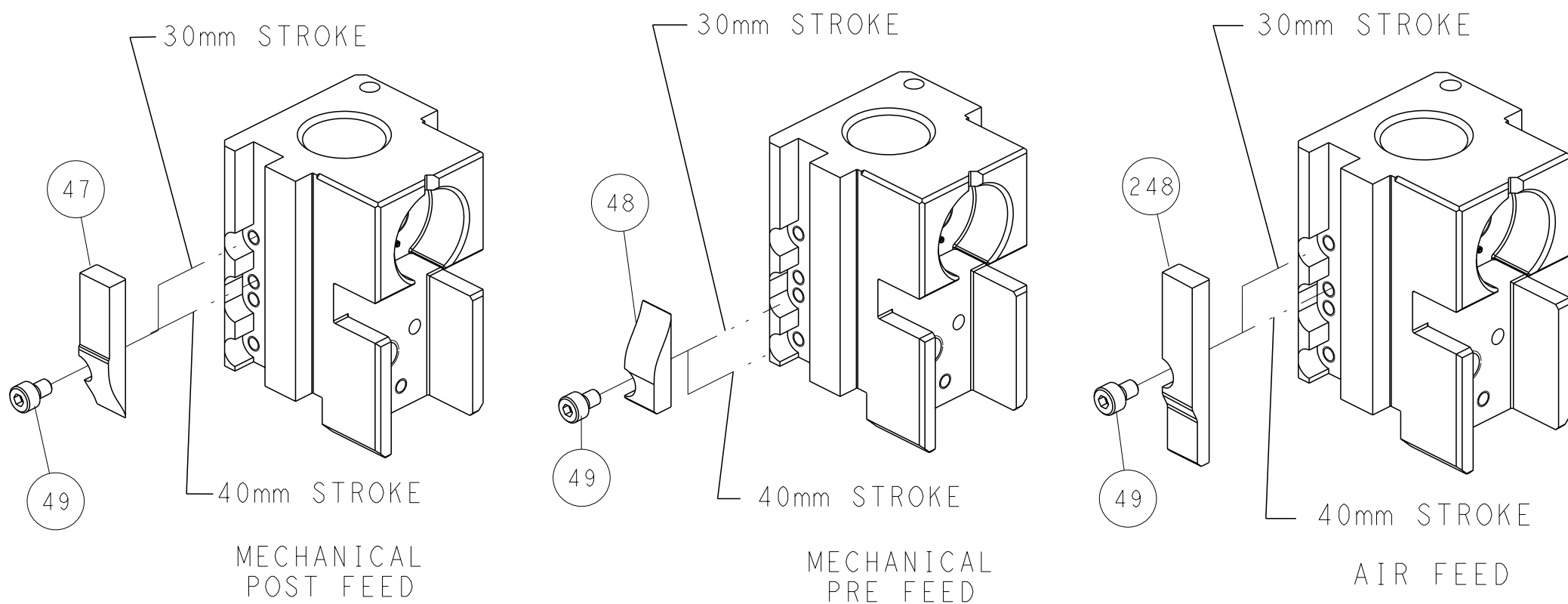
PNEUMATIC



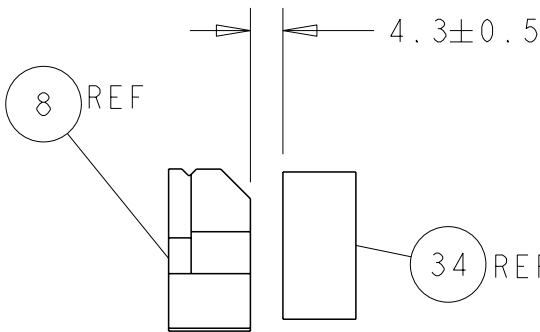
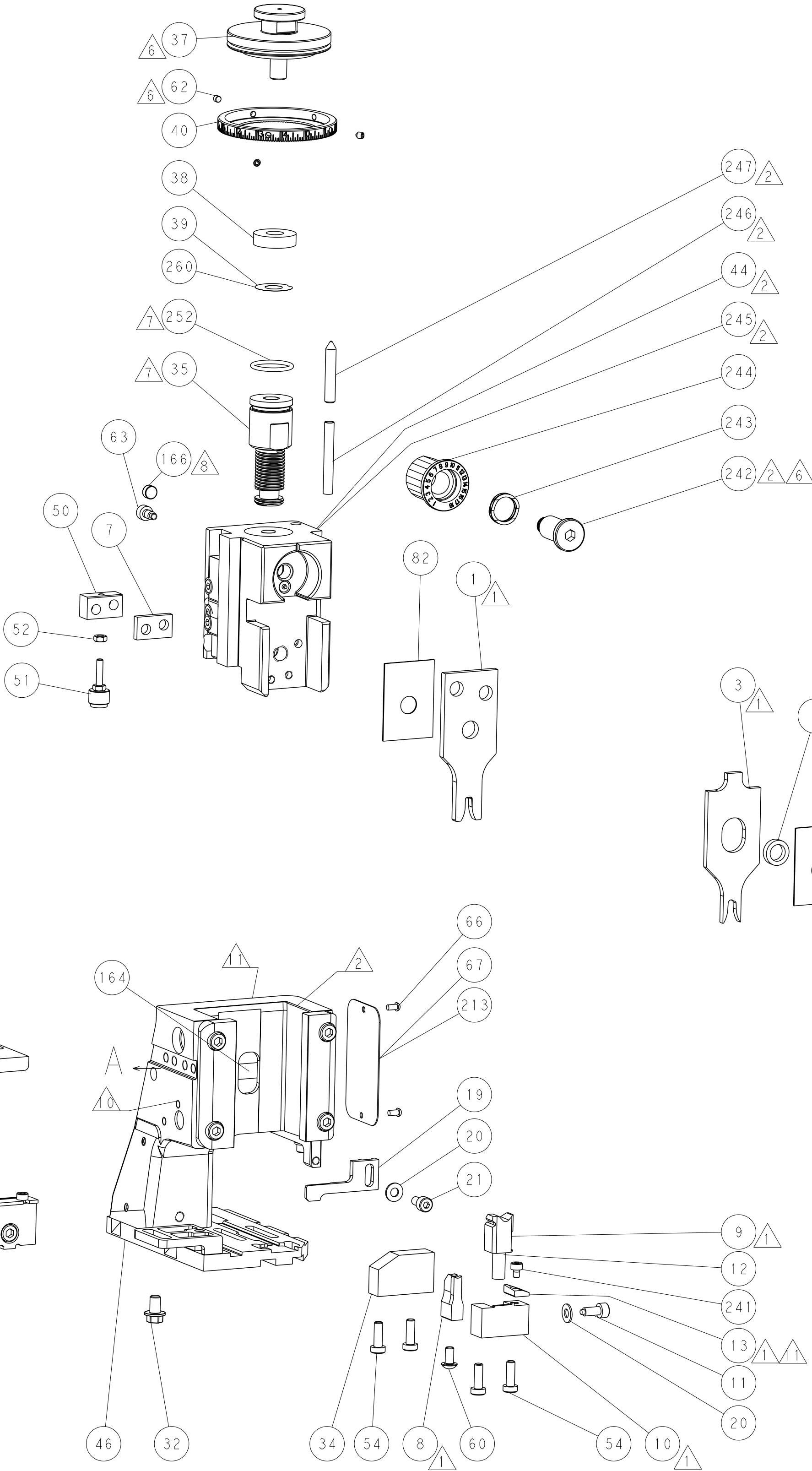
SERVO
LATCH PLATE



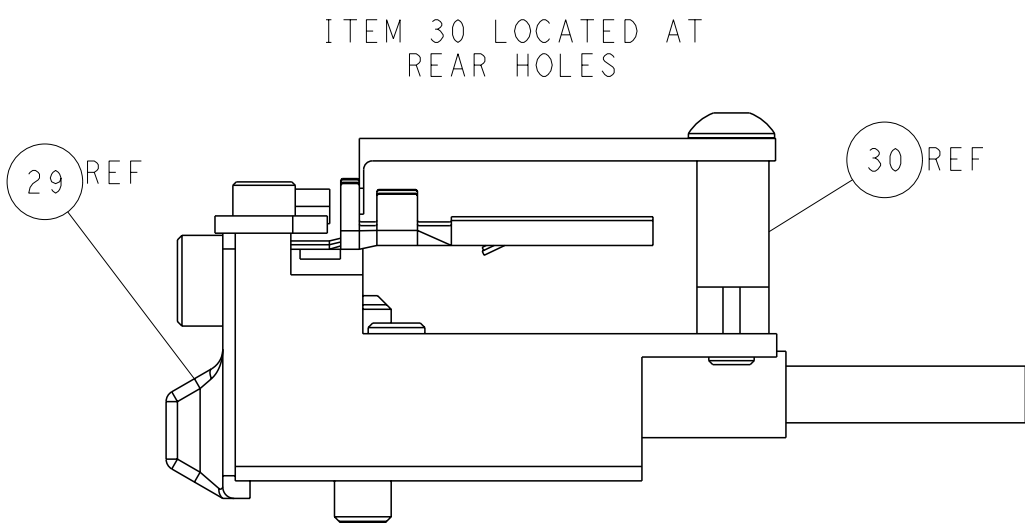
CAM POSITIONS



ATLANTIC VERSION
Shown on sheets 1 of 4 & 2 of 4
(Pacific version shown on sheets 3 of 4 & 4 of 4)

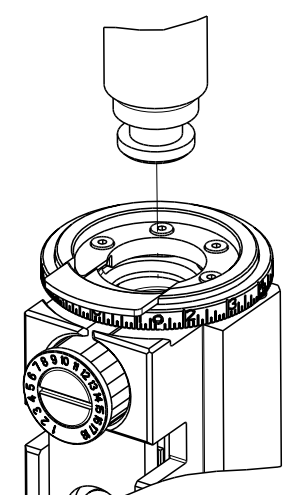



TERMINAL SUPPORT LOCATION

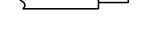



FEED TRACK POSITION
GUIDE BY INSULATION BARREL

DIMENSIONS:		TOLERANCES UNLESS OTHERWISE SPECIFIED:		DWN		90CT2015		TE Connectivity	
mm		0 PLC ±		OFFNER		12OCT2015		Harrisburg, PA 17105-3608	
FINISH		1 PLC ±		TELBIN		12OCT2015		NAME	
MATERIAL		2 PLC ±		APVD		TELBIN		Ocean Side Feed	
		3 PLC ±		PRODUCT SPEC				Applicator	
		4 PLC ±		APPLICATION SPEC					
		ANGLES		WEIGHT		SIZE		CAGE CODE	
		FINISH		Customer Accessible Production Drawing		A1		00779	
				SCALE		1:2		SHEET	
								2	
								OF	
								4	
								REV	
								B	

8				6		5		4		3		
THIS DRAWING IS UNPUBLISHED.		RELEASED FOR PUBLICATION		20								
© COPYRIGHT 20		BY TYCO ELECTRONICS CORPORATION. ALL RIGHTS RESERVED.										
	PART NUMBER	REVISION	DESCRIPTION	FEED TYPE	APPLICATOR STYLE CONVERSION CHART							
					CONVERT TO	PART NUMBERS REQUIRED						
	2-2836032-1	B	FINE CRIMP HEIGHT ADJUST	MECHANICAL	PNEUMATIC FEED	2119950-1	1338683-8	5-18022-5	2119641-2	2119799-1	2063440-1	
					SERVO LATCH PLATE	2119951-1	-	8-2836032-5	1901094-3	-	2168400-6 (QUANTITY 2)	
					SMART APPLICATOR	2161326-1	-	8-2836032-4	-	-	-	
	2-2836032-2	B	FINE CRIMP HEIGHT ADJUST	PNEUMATIC	MECHANICAL FEED	2119949-1	1338683-8	5-18022-5	2119653-2	-	-	
					SERVO LATCH PLATE	2119951-1	-	8-2836032-5	1901094-3	-	2168400-6 (QUANTITY 2)	
					SMART APPLICATOR	2161326-1	-	8-2836032-4	-	-	-	
	2-2836032-5	B	FINE CRIMP HEIGHT ADJUST	SERVO LATCH PLATE 	MECHANICAL FEED	2119949-1	1338683-8	5-18022-5	2119653-2	-	-	
					PNEUMATIC FEED	2119950-1	1338683-8	5-18022-5	2119641-2	2119799-1	2063440-1	
	2-2836032-7	B	FINE CRIMP HEIGHT ADJUST	NONE	-	-	-	-	-	-	-	-
	7-2836032-7	A	CRIMP TOOLING KIT	-	-	-	-	-	-	-	-	-

APPLICATOR DATA		
CRIMP	SIZE	TYPE
WIRE	3.38 mm [.133]	F
INSUL	4.32 mm [.170]	OV
APPLICATOR INSTRUCTIONS 408-10389		

TERMINAL DATA: KET TERMINAL		KET CRIMP SPECIFICATION	
TERMINAL NAME: TERMINAL,110[280] CONNECTOR			
WIRE STRIP LENGTH 4.30-4.70 mm [.169-.185 IN]		 INSULATION DIAMETER RANGE Ø2.60-3.80 mm [.102-.150 IN]	
TERMINAL APPLICATION SPECIFICATION 		280 MALE TERMINAL S M L Rev 2010.10.29	
TERMINALS APPLIED			
TE TERMINAL	KET TERMINAL	TE TERMINAL	KET TERMINAL
2113894-1	ST741287-3		

WIRE SIZE	CRIMP HEIGHT mm [INCH]	CRIMP HEIGHT REFERENCE SETTING
AVS 3.0mm ²	1.85+/-0.05 [.073+/- .002]	4.2
FLRY-B 2.5mm ²	1.70+/-0.05 [.067+/- .002]	5.6
AVSS 2.0mm ²	1.60+/-0.05 [.063+/- .002]	6.8



- RECOMMENDED SPARE PARTS

GREASE BEARING SURFACES LIGHTLY

LUBRICATE DAILY PER THE APPLICATOR INSTRUCTION SHEET SUPPLIED WITH THE APPLICATOR.

APPLICATOR SPECIFIC DATA TO BE ENTERED INTO BLANK MEMORY CHIP AT ASSEMBLY. SEE BELOW FOR PART NUMBER:
MECHANICAL FEED WITH "SMART APPLICATOR" CONVERSION: 8-2836032-4
PNEUMATIC FEED WITH "SMART APPLICATOR" CONVERSION: 8-2836032-4
SERVO FEED WITH "FINE CRIMP HEIGHT ADJUST": 8-2836032-5

ADJUSTMENT OF THE STRIPPER MAY BE REQUIRED WHEN MOVING THE APPLICATOR BETWEEN BENCH AND LEADMAKER APPLICATIONS.

APPLY PART NUMBER 1-23419-5 LOCTITE TO THREADS OF ITEM 62.
APPLY PART NUMBER 2-23419-6 LOCTITE TO THREADS OF ITEM 242.

GREASE THREADS, GROOVE AND O-RING ON ITEMS 139 & 152.

MAGNET MUST BE ORIENTED CORRECTLY IN ORDER TO PROPERLY ACTUATE THE COUNTER.

CRIMP HEIGHT REFERENCE SETTING WAS THE SETTING USED WHEN THE APPLICATOR WAS QUALIFIED AT THE FACTORY. ADJUSTMENT MAY BE NECESSARY WHEN RUNNING APPLICATOR IN THE FIELD.

SPARE FEED CAM STORAGE LOCATION REFER TO INSTRUCTION SHEET FOR ADDITIONAL INFORMATION.

TO CONVERT THE APPLICATOR TO A NON-CARRIER CUTTING STYLE, REMOVE ITEM 13 AND ATTACH TO THE LOCATION ON BACK SIDE OF THE HOUSING. REFER TO INSTRUCTION SHEET FOR ADDITIONAL INFORMATION.

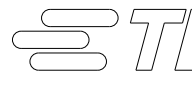
*WARNING
ON INSTALLATION, SET WIRE DISC, ITEM 40 TO LARGEST WIRE SIZE SETTING. USE OF SETTINGS BELOW MINIMUM REQUIRED CRIMP HEIGHT SETTING WILL CAUSE DAMAGE TO CRIMP TOOLING.

-	1	1	1	1	2119782-1	FINE ADJUST HEAD ASM, PACIFIC STYLE	251
-	-	-	1	-	2119640-1	PUSH ROD, AIR FEED	250
-77	-27	-25	-22	-21	PART NO	DESCRIPTION	ITEM NO

PACIFIC VERSION
Shown on sheets 3 of 4 & 4 of 4
(Atlantic version shown on sheets 1 of 4 & 2 of 4)

SET UP GAUGE 2119599-1	LOC A	DIST 66	REVISIONS			
P	LYR	DESCRIPTION		DATE	OWN	APVD
	-	SEE SHEET 1		-	-	-

-	-	-	1	-	2079988-1	BUSHING, LCH5-12, MISUMI	249
-	1	1	1	1	1-22279-3	SPRING, COMPRESSION	246
-	1	1	1	1	2119082-3	CAM, SNAIL, INSULATION ADJUSTMENT	244
-	1	1	1	1	2079764-1	WASHER, WAVE SPRING, CREST-TO-CREST	243
6	-	1	1	1	2119083-1	RETAINER, INSULATION DIAL	242
-	1	1	1	1	7-18023-7	SCR, SKT HD CAP M3 X 4.0	241
-	-	2	-	-	2168400-6	SHCS, LOW HEAD, RoHS, M5 X 16	240
-	-	-	-	1	2119580-1	MECHANICAL FEED ASSEMBLY	239
-	-	-	1	-	2063440-1	AIR FEED MODULE	238
-	-	1	-	-	2119740-2	TAG,IDENTIFICATION	213
-	-	1	-	-	1901094-3	SPACER, FEEDER	198
-	-	-	2	-	21045-3	RING, RETAIN, EXTERN, 3/16 CRESCENT	172
8	-	1	1	1	994969-1	MAGNET, RARE EARTH HIGH ENERGY	166
-	REF	REF	REF	REF	994970-2	COUNTER, MAGNETIC	164
-	-	-	1	-	240638-1	SPRING, FEED FINGER	163
7	-	1	1	1	8-21084-1	O-RING, .801 ID, .070 DIA. MAT.	152
-	-	-	1	-	2119641-2	FEED CAM, AIR FEED	151
-	1	1	1	1	2119798-2	DETENT PIN	145
-	1	1	1	1	2079383-8	SCR, BHSC, RoHS (M4 X 16)	144
-	4	4	4	4	2168400-5	SHCS, LOW HEAD, RoHS, M4 X 20	143
-	-	-	-	1	2119653-2	FEED CAM, POST FEED	142
-	1	1	1	1	1-2119656-0	APPLICATOR BASIC ASSEMBLY, SF	141
-	1	1	1	1	2119650-1	RAM, ASIAN STYLE, SIDE FEED	140
7	-	1	1	1	2119092-2	BOLT, ADJUSTMENT	139
-	-	-	1	-	3-23627-7	PIN, RETAIN, GRVD, 3/16 X .854	137
-	-	-	1	-	2119799-1	HOLDER,FEED FINGER, AF	136
-	-	REF	-	-	SEE NOTE 4	MEMORY CHIP, PROGRAMMED	135
-	-	1	-	-	1633743-1	SERVO FEED LATCH ASM	133
-	-	REF	-	-	2119944-1	FEED FINGER ASSEMBLY,SF	117
-	1	1	1	1	455888-5	SPACER, CRIMPER	82
-	1	1	1	1	22278-9	SPRING, COMPRESSION	77
-	1	1	1	1	854769-4	HOLDER, INS	74
-	1	1	1	1	2119956-1	DOCUMENTATION PACKAGE	71
-	1	-	1	1	2119740-1	TAG,IDENTIFICATION	67
-	2	2	2	2	2168078-1	SCREW, DRIVE, RH, RoHS, 2 x .188	66
6	-	1	1	1	2119793-1	LIMITER, ADJUSTMENT BOLT	63
-	3	3	3	3	992763-5	SCR, SET, SOC, CONE PNT, M3 x 4.0	62
-	-	-	1	1	5-18022-5	SCR, HEX HD CAP, M4 X 6.0	59
-	1	1	1	1	21028-2	PIN, SLOTTED SPRING .062 X .250	58
-	-	-	1	1	1338683-8	FEED PAWL	56
-	2	2	2	2	2-2168083-5	SCR, SKT HD CAP, RoHS, M4 X 14	53
-	1	1	1	1	5018030-1	NUT, HEX, REG, RoHS, M3	52
-	1	1	1	1	811242-5	BUMPER, HOLD DOWN	51
-	1	1	1	1	690753-2	SPACER, TONKER	50
-	-	-	1	2	18023-9	SCR, SKT HD CAP M4 X 6.0	49
-	-	-	-	1	2119652-1	FEED CAM, PRE FEED	48
-	1	1	1	1	2079383-7	SCR, BHSC, RoHS (M8 X 25)	41
-	1	1	1	1	2119645-1	DISC, NUMBERED FA WIRE ADJUSTMENT	40
-	1	1	1	1	2119957-1	APPLICATOR SHIM PACK	39
-	1	1	1	1	1-2119644-2	RAM WASHER, PRECISION	38
-	1	1	1	1	1752356-1	SUPPORT, TERMINAL	34
-	2	2	2	2	2079383-5	SCR, BHSC, RoHS (M4 X 20)	33
-	1	1	1	1	2161328-1	HEX HEAD, FLANGED, M5 x 8mm LONG	32
-	1	1	1	1	1-1320908-2	SPACER, STRIP GUIDE	30
-	1	1	1	1	2119959-1	ASSEMBLY, STRIP GUIDE	29
-	1	1	1	1	455888-5	SPACER, CRIMPER	28
-	1	1	1	1	1320928-6	STRIP GUIDE	24
-	1	1	1	1	2168083-2	SCR, SKT HD CAP, RoHS, M4 X 8.0	21
-	2	2	2	2	1-18028-2	WASHER, FLAT, REG M4	20
-	1	1	1	1	2119533-1	STRIPPER, SIDE FEED	19
11	-	1	1	1	2119806-1	INSERT, SHEAR	13
-	1	1	1	1	3-22280-3	SPRING, COMPRESSION	12
-	1	1	1	1	1-356885-4	STOP, SHEAR	11
7	-	1	1	1	2119805-1	SHEAR HOLDER, FRONT	10
-	1	1	1	1	1803095-1	FLOATING SHEAR, FRONT -	9
1	1	1	1	1	6-1803171-9	ANVIL, COMBINATION	8
-	1	1	1	1	240641-5	SPACER	7
-	-	-	-	-	-	-	6
-	1	1	1	1	1-2119780-1	DEPRESSOR, SHEAR	5
-	1	1	1	1	238011-2	BLOCK, CRIMPER SPACER	4
7	1	1	1	1	1-2119785-4	CRIMPER, INSULATION OVERLAP PREMIUM	3
-	-	-	-	-	-	-	2
7	1	1	1	1	9-1633588-0	CRIMPER, WIRE	1
-77	-27	-25	-22	-21	PART NO	DESCRIPTION	ITEM NO

THIS DRAWING IS UNPUBLISHED. IT IS SUBJECT TO CHANGE AND TO THE EXTENT OF THE ENGINEERING ORGANIZATION'S POLICY, IT IS SUBJECT TO CHANGE AND TO THE EXTENT OF THE ENGINEERING ORGANIZATION'S POLICY. IT IS SUBJECT TO CHANGE AND TO THE EXTENT OF THE ENGINEERING ORGANIZATION'S POLICY. IT IS SUBJECT TO CHANGE AND TO THE EXTENT OF THE ENGINEERING ORGANIZATION'S POLICY.				OWN OFFNER	90CT2015	 TE Connectivity Harrisburg, PA 17105-3608	
				CHK T.ELBIN	120CT2015		
DIMENSIONS: mm				APVD T.ELBIN	120CT2015		
				PRODUCT SPEC			
				APPLICATION SPEC		NAME Ocean Side Feed Applicator	
MATERIAL -				WEIGHT -		SIZE A1	CAGE CODE 00779
						DRAWING NO C=2836032	RESTRICTED TO -
				Customer Accessible Production Drawing		SCALE 1:2	SHEET 3
						OF 4	REV B

SHEETS 1 & 2 ARE NOT REQUIRED FOR PACIFIC VERSION

30mm STROKE

142

49

MECHANICAL POST FEED

30mm STROKE

48

49

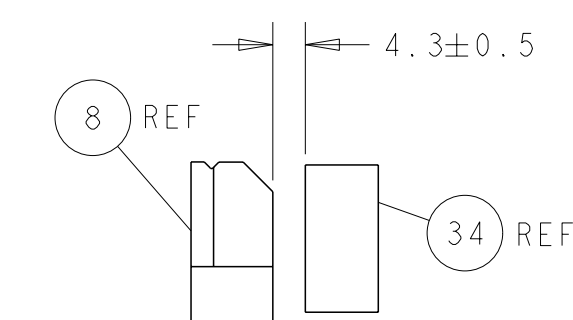
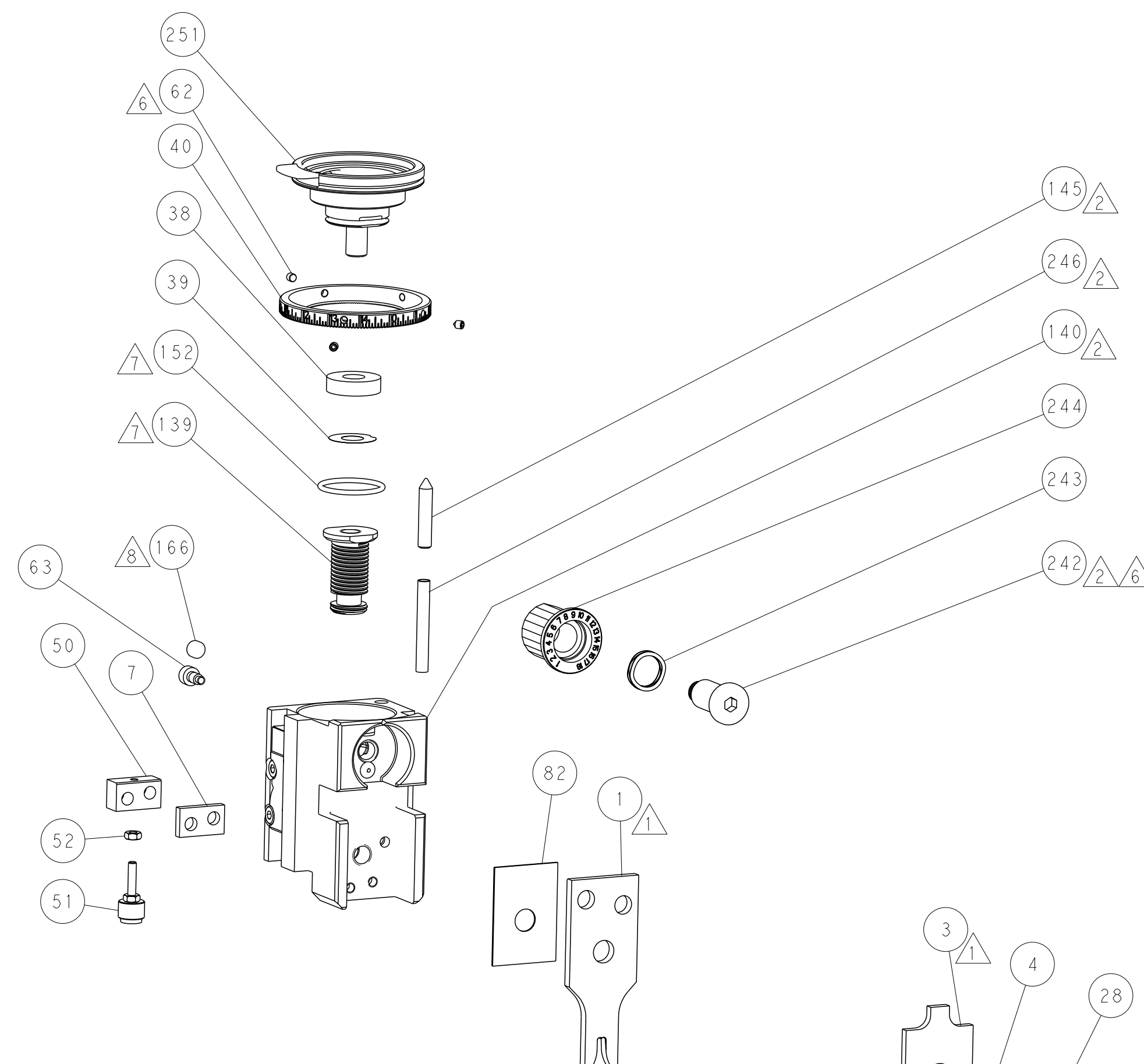
MECHANICAL PRE FEED

30mm STROKE

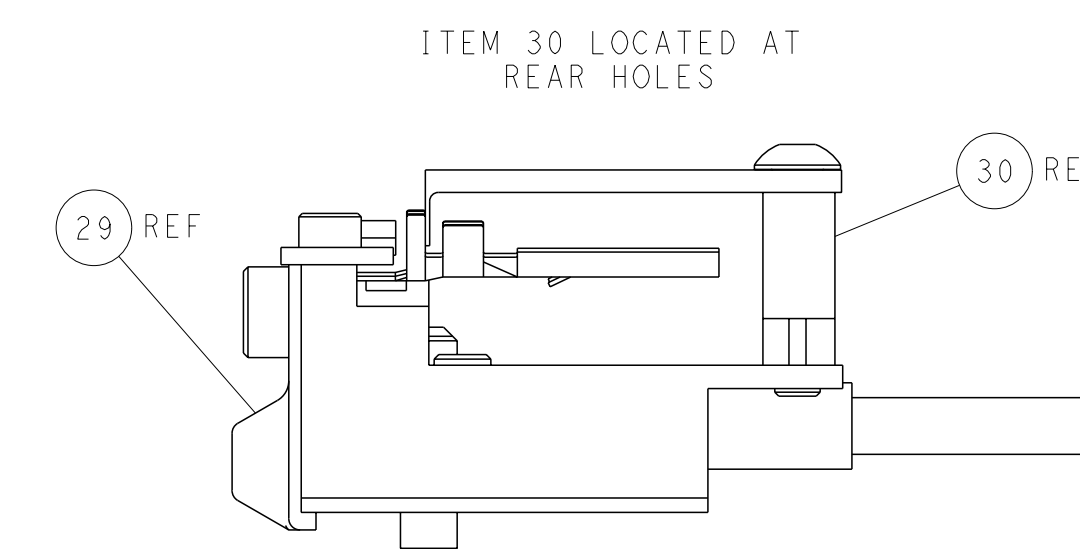
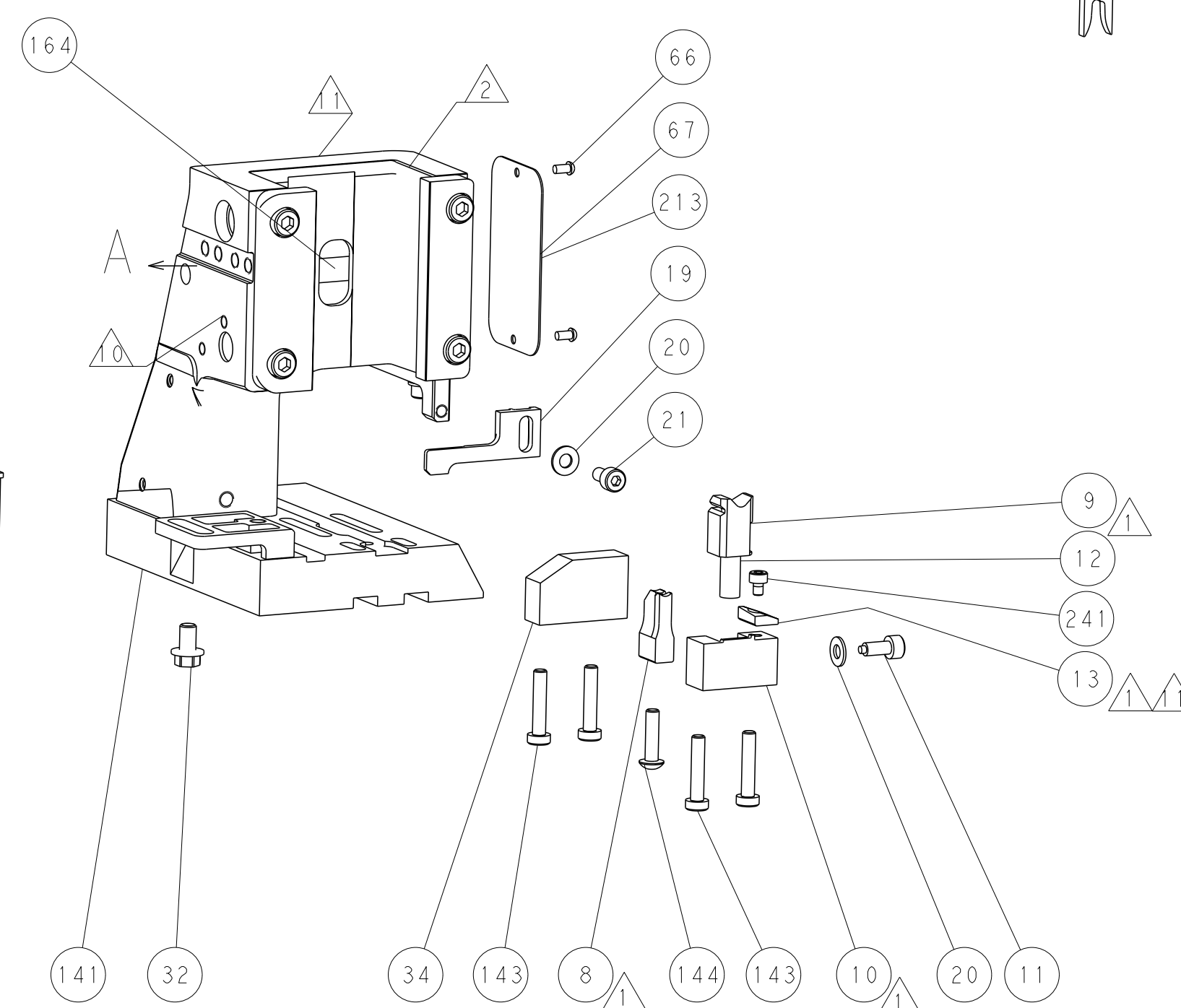
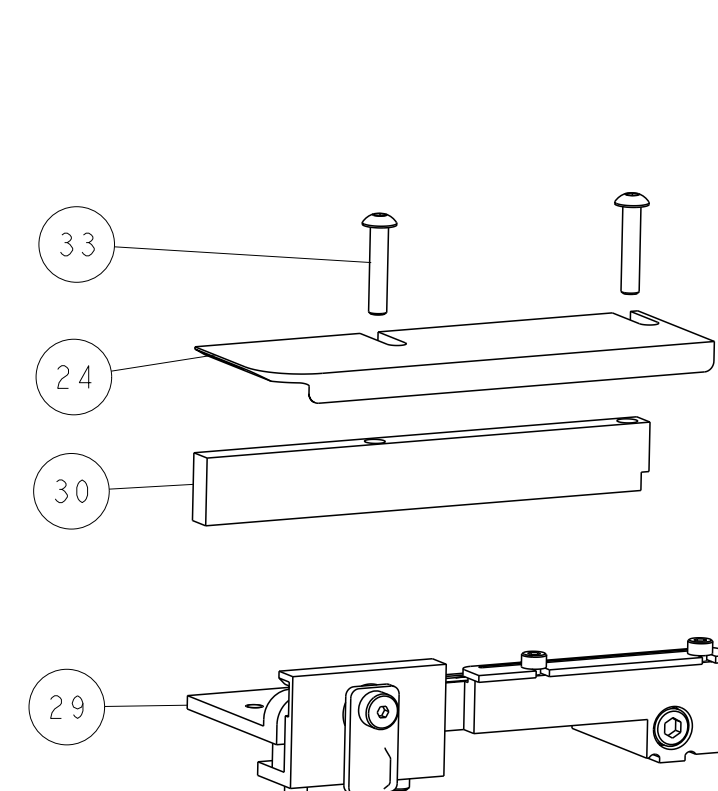
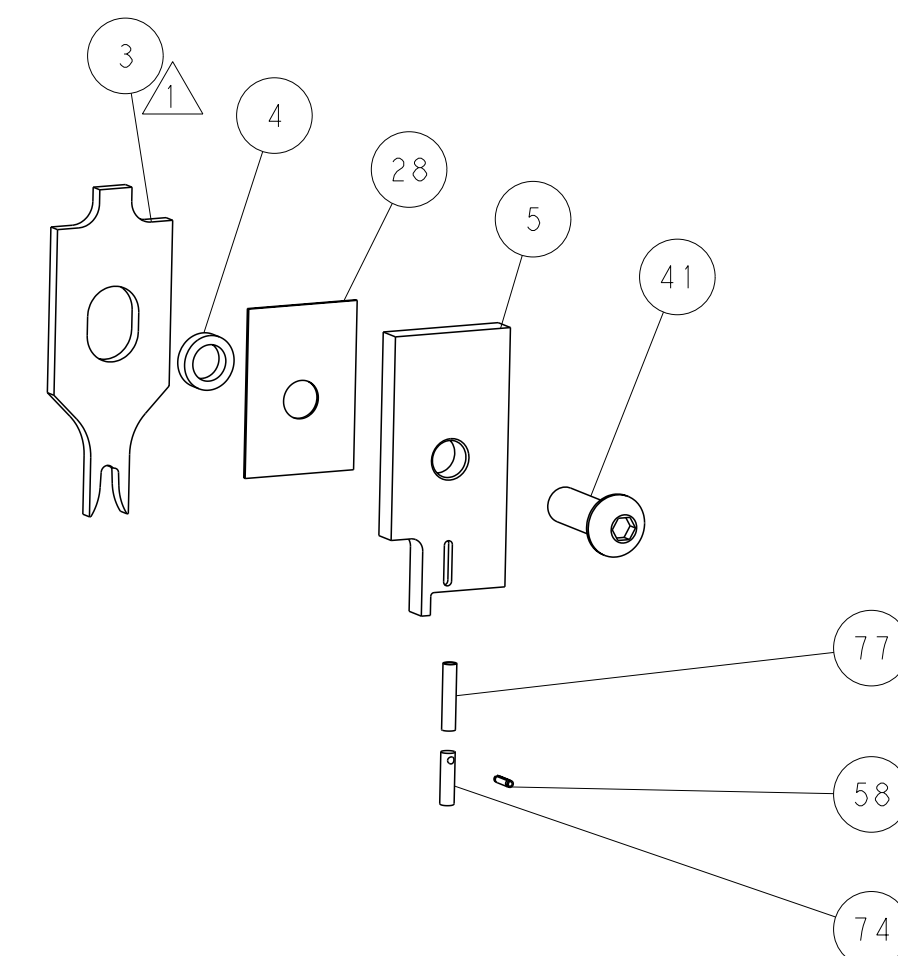
151

49

AIR FEED

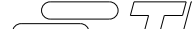



TERMINAL SUPPORT LOCATION



FEED TRACK POSITION GUIDE BY INSULATION BARREL

Shown on sheets 3 of 4 & 4 of 4
(Atlantic version shown on sheets 1 of 4 & 2 of 4)

THIS DRAWING IS A CONTROLLED DOCUMENT FOR THE ENGINEERING CORPORATION IT IS SUBJECT TO CHANGE, AND THE CONTROLLING ENGINEERING ORGANIZATION MAY BE NOTIFIED FOR THE LATEST REVISION		DWG HOFNER 90C12015		 TE Connectivity Harrisburg, PA 17105-3608	
DIMENSIONS:		CHK ELBIN 120C12015			
TOLERANCES UNLESS OTHERWISE SPECIFIED:		APVD ELBIN 120C12015		NAME	
mm		PRODUCT SPEC		Ocean Side Feed Applicator	
		APPLICATION SPEC		-	
MATERIAL		FINISH		RESTRICTED TO	
-		-		-	
		WEIGHT		-	
		A1		00779 ©=2836032	
		Customer Accessible Production Drawing		SCALE 1:2 SHEET A OF A REV B	

Mouser Electronics

Authorized Distributor

Click to View Pricing, Inventory, Delivery & Lifecycle Information:

[TE Connectivity:](#)

[2836032-2](#)