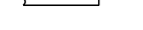
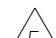


8		7	
THIS DRAWING IS UNPUBLISHED.		RELEASED FOR PUBLICATION	
2015		2015	
© COPYRIGHT 2015		BY TYCO ELECTRONICS CORPORATION. ALL RIGHTS RESERVED.	
PART NUMBER	REVISION	DESCRIPTION	FEED TYPE
2266830-1	C	FINE CRIMP HEIGHT ADJUST	MECHANICAL
2266830-2	C	FINE CRIMP HEIGHT ADJUST	PNEUMATIC
7-2266830-1	C	MECHANICAL AND CRIMP TOOLING KIT	MECHANICAL
7-2266830-2	C	PNEUMATIC AND CRIMP TOOLING KIT	PNEUMATIC
7-2266830-7	B	CRIMP TOOLING KIT	-

APPLICATOR DATA		
CRIMP	SIZE	TYPE
WIRE	2.29 mm [.090]	F
INSUL	3.94 mm [.155]	OV
APPLICATOR INSTRUCTIONS 408-35042		

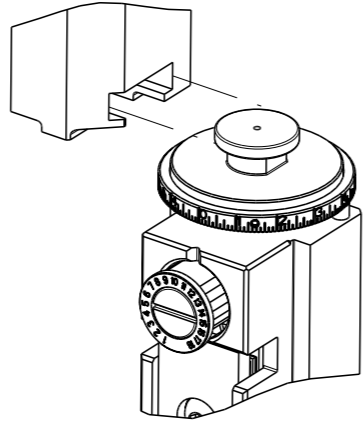
TERMINAL DATA: TE TERMINAL		TE CRIMP SPECIFICATION	
TERMINAL NAME: TERMINAL, SHUR PLUG RECEPTACLE			
WIRE STRIP LENGTH 3.90-4.70 mm [.154-.185 IN]			INSULATION DIAMETER RANGE Ø2.54-3.56 mm [.100-.140 IN]
TERMINAL APPLICATION SPECIFICATION		114-3118	-
TERMINAL APPLICATION SPECIFICATION		-	-
TERMINALS APPLIED 			
TE TERMINAL	TE TERMINAL	TE TERMINAL	TE TERMINAL
1-150656-1	1-150656-2	150655	150554-3

WIRE SIZE	CRIMP HEIGHT mm [INCH]	CRIMP HEIGHT REFERENCE SETTING
1.50mm2	1.98+/-0.05 [1.078+/- .002]	5.1
16 AWG	1.93+/-0.05 [1.076+/- .002]	5.6
1.00mm2	1.80+/-0.05 [1.071+/- .002]	7.0
18 AWG OR 0.80mm2	1.75+/-0.05 [1.069+/- .002]	7.5
0.75mm2	1.73+/-0.05 [1.068+/- .002]	7.8
20 AWG OR 0.50mm2	1.65+/-0.05 [1.065+/- .002]	8.6



- 1 RECOMMENDED SPARE PARTS
- 2 REFER TO SUPPLIED INSTRUCTION SHEET FOR CLEANING, LUBRICATION AND STORAGE OF APPLICATOR.
- 3 APPLY PART NUMBER 2-23419-6 LOCTITE TO THREADS OF ITEM 242.
- 4 CRIMP HEIGHT REFERENCE SETTING WAS THE SETTING USED WHEN THE APPLICATOR WAS QUALIFIED AT THE FACTORY. ADJUSTMENT MAY BE NECESSARY WHEN RUNNING APPLICATOR IN THE FIELD.
- 5 TERMINAL LUBRICANT IS RECOMMENDED.
6. UNLESS SPECIFIED OTHERWISE TORQUE VALUES SHALL BE USED PER DOCUMENT, 101-35000.

ATLANTIC VERSION TERMINATOR
INTERFACE ADAPTER



ATLANTIC VERSION
Shown on sheets 1 of 4 & 2 of 4
(Pacific version shown on sheets 3 of 4 & 4 of 4)

*WARNING
ON INSTALLATION, SET WIRE DISC TO CRIMP HEIGHT REFERENCE SETTING FOR LARGEST WIRE SIZE. CRIMP HEIGHT REFERENCE SETTINGS GREATER THAN THE VALUE SHOWN MAY CAUSE DAMAGE TO THE CRIMP TOOLING, REFER TO THE INSTRUCTION SHEET FOR PROPER SETUP AND ADJUSTMENTS.

2		1							
LOC	DIST	REVISIONS							
A	66	P	LTR	DESCRIPTION			DATE	DWN	APVD
		A		RELEASED			19AUG2015	BW	TE
		B		ECR-16-010641			25JUL2016	MZ	JDG
		C		ECR-19-011234			17JUL2019	FJ	GB

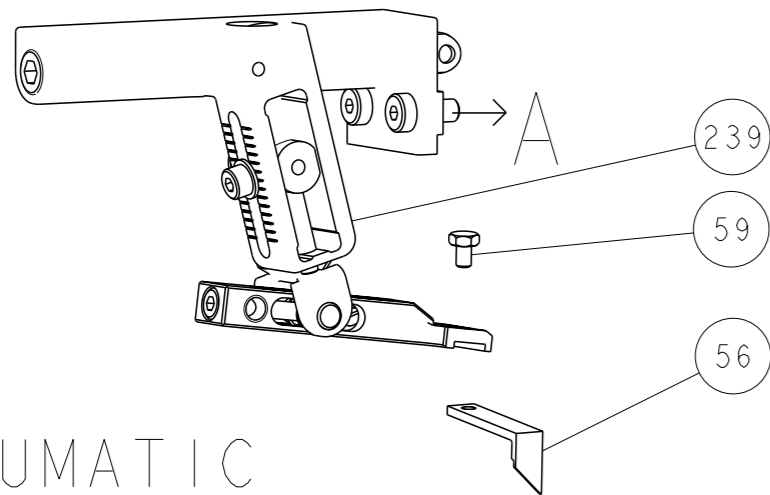
-	2	2	2	2	2168083-1	SCR, SKT HD CAP, RoHS, M3 X 8.0	269
-	1	1	1	1	1633782-3	FENCE	267
-	1	-	1	-	2119641-1	FEED CAM, AIR FEED	248
-	1	1	1	1	2119082-7	CAM, SNAIL, INSULATION ADJUSTMENT	244
-	1	1	1	1	2079764-1	WASHER, WAVE SPRING, CREST-TO-CREST	243
-	1	1	1	1	2119083-1	RETAINER, INSULATION DIAL	242
-	1	1	1	1	7-18023-7	SCR, SKT HD CAP M3 X 4.0	241
-	-	1	-	1	2119580-1	MECHANICAL FEED ASSEMBLY	239
-	1	-	1	-	2844940-1	AIR FEED MODULE	238
-	REF	REF	REF	REF	994970-2	COUNTER, MAGNETIC	164
-	1	1	1	1	2119955-1	ASSY, LUBRICATOR, SIDE FEED	113
-	1	1	1	1	2844908-1	SCREW, LOCKING	99
-	1	1	1	1	2844907-1	POST, LOCKING	98
-	1	1	1	1	455888-5	SPACER, CRIMPER	82
-	1	1	1	1	1803607-3	DOCUMENTATION PACKAGE	71
-	1	1	1	1	2119740-1	TAG,IDENTIFICATION	67
-	2	2	2	2	2168078-1	SCREW, DRIVE, RH, RoHS, 2 x .188	66
-	1	1	1	1	2168083-2	SCR, SKT HD CAP, RoHS, M4 X 8.0	60
-	1	1	1	1	5-18022-5	SCR, HEX HD CAP, M4 X 6.0	59
-	1	1	1	1	1338683-8	FEED PAWL	56
-	2	2	2	2	2168083-3	SCR, SKT HD CAP, RoHS, M4 X 12.0	54
-	2	2	2	2	1-2168083-0	SCR, SKT HD CAP, RoHS, M4 X 10	53
-	1	1	1	1	5018030-1	NUT, HEX, REG, RoHS, M3	52
-	1	1	1	1	811242-5	BUMPER, HOLD DOWN	51
-	1	1	1	1	690753-2	SPACER, TONKER	50
-	1	2	1	2	18023-9	SCR, SKT HD CAP M4 X 6.0	49
-	-	1	-	1	2119652-1	FEED CAM, PRE FEED	48
-	-	1	-	1	2119653-1	FEED CAM, POST FEED	47
-	1	1	1	1	1803583-9	APPLICATOR BASIC ASSEMBLY, SF	46
-	1	1	1	1	1803515-1	RAM ASSEMBLY, SF ATLANTIC	44
-	1	1	1	1	1803602-1	SCR, BHSC, RoHS (M8 X 25)	41
-	2	2	2	2	2079383-5	SCR, BHSC, RoHS (M4 X 20)	33
-	2	2	2	2	2-2844962-8	SPACER, CYLINDRICAL, STRIP GUIDE	30
-	1	1	1	1	2844992-1	ASSEMBLY, STRIP GUIDE	29
-	1	1	1	1	455888-3	SPACER, CRIMPER	28
-	1	1	1	1	1320928-2	STRIP GUIDE	24
-	1	1	1	1	2168083-2	SCR, SKT HD CAP, RoHS, M4 X 8.0	21
-	2	2	2	2	1-18028-2	WASHER, FLAT, REG M4	20
-	1	1	1	1	2119533-1	STRIPPER, SIDE FEED	19
-	1	1	1	1	2119806-1	INSERT, SHEAR	13
-	1	1	1	1	3-22280-3	SPRING, COMPRESSION	12
-	1	1	1	1	1-356885-4	STOP, SHEAR	11
-	1	1	1	1	2119805-1	SHEAR HOLDER, FRONT	10
-	1	1	1	1	1803095-1	FLOATING SHEAR, FRONT -	9
-	1	2	2	1	1-1333205-2	ANVIL, COMBINATION	8
-	-	-	-	-	-	-	7
-	-	-	-	-	-	-	6
-	1	1	1	1	1-2119757-0	DEPRESSOR, SHEAR	5
-	1	1	1	1	238011-2	BLOCK, CRIMPER SPACER	4
-	1	2	2	1	9-2119785-4	CRIMPER, INSULATION OVERLAP PREMIUM	3
-	1	1	1	1	455888-9	SPACER, CRIMPER	2
-	1	2	2	1	4-456406-7	CRIMPER, WIRE PREMIUM	1
-77-72-71	-2	-1	PART NO		DESCRIPTION		ITEM NO

THIS DRAWING IS UNPUBLISHED. IT IS SUBJECT TO CHANGE AND TO BE CONTROLLED BY THE ENGINEERING ORGANIZATION. IT SHOULD BE CONTACTED FOR THE LATEST REVISION.				DWN B. WEAVER 09JUL2015	TE Connectivity Harrisburg, PA 17105-3608		
DIMENSIONS:				CHK T. ELBIN 09JUL2015			
mm				APVD T. ELBIN 09JUL2015			
TOLERANCES UNLESS OTHERWISE SPECIFIED:				PRODUCT SPEC			
0 PLC ± 1 PLC ± 2 PLC ± 3 PLC ± 4 PLC ±				APPLICATION SPEC	NAME Ocean Side Feed Applicator		
MATERIAL				FINISH	SIZE A1	CAGE CODE 00779	DRAWING NO C=2266830
-				-	WEIGHT	-	RESTRICTED TO -
Customer Accessible Production Drawing				SCALE 1:2	SHEET 1	OF 4	REV C

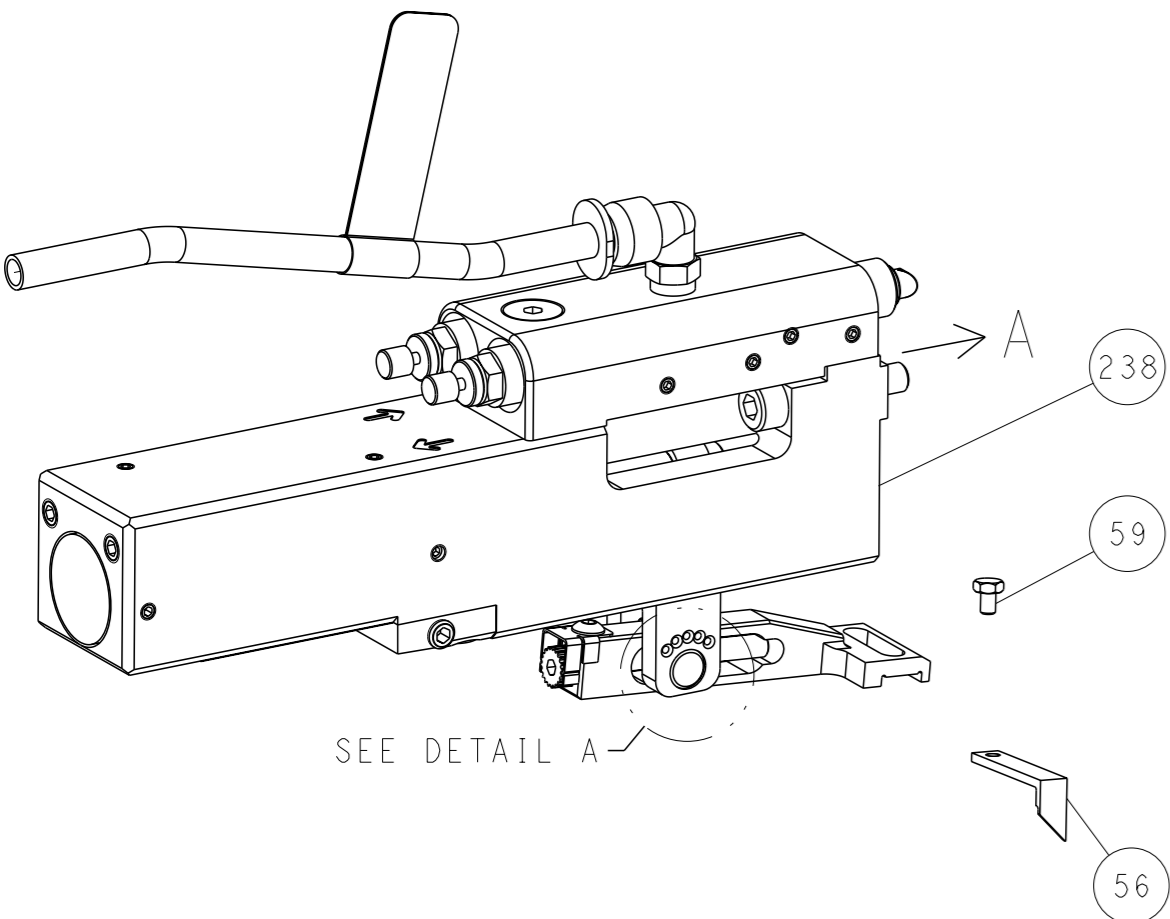
SHEETS 3 & 4 ARE NOT REQUIRED FOR ATLANTIC VERSION

LOC	DIST	REVISIONS					
		P	LYR	DESCRIPTION	DATE	DWN	APVD
A	66		-	SEE SHEET 1	-	-	-

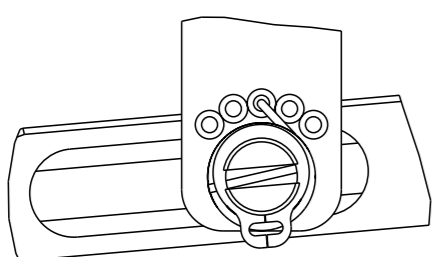
FEED TYPE MECHANICAL



PNEUMATIC

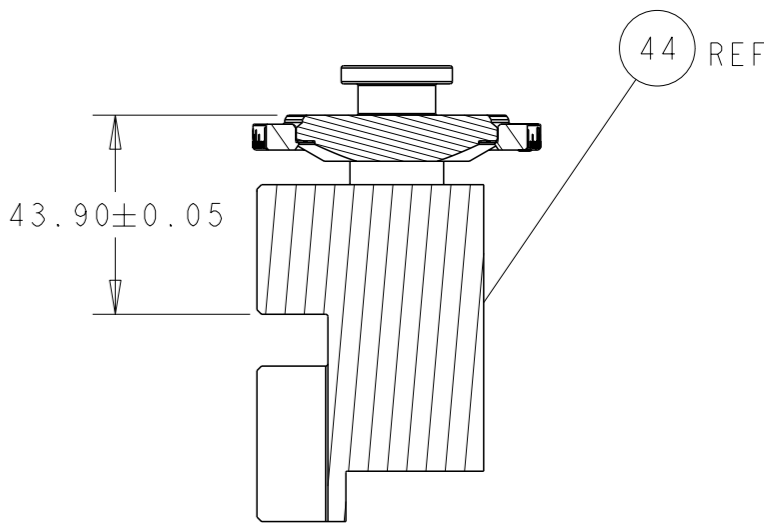
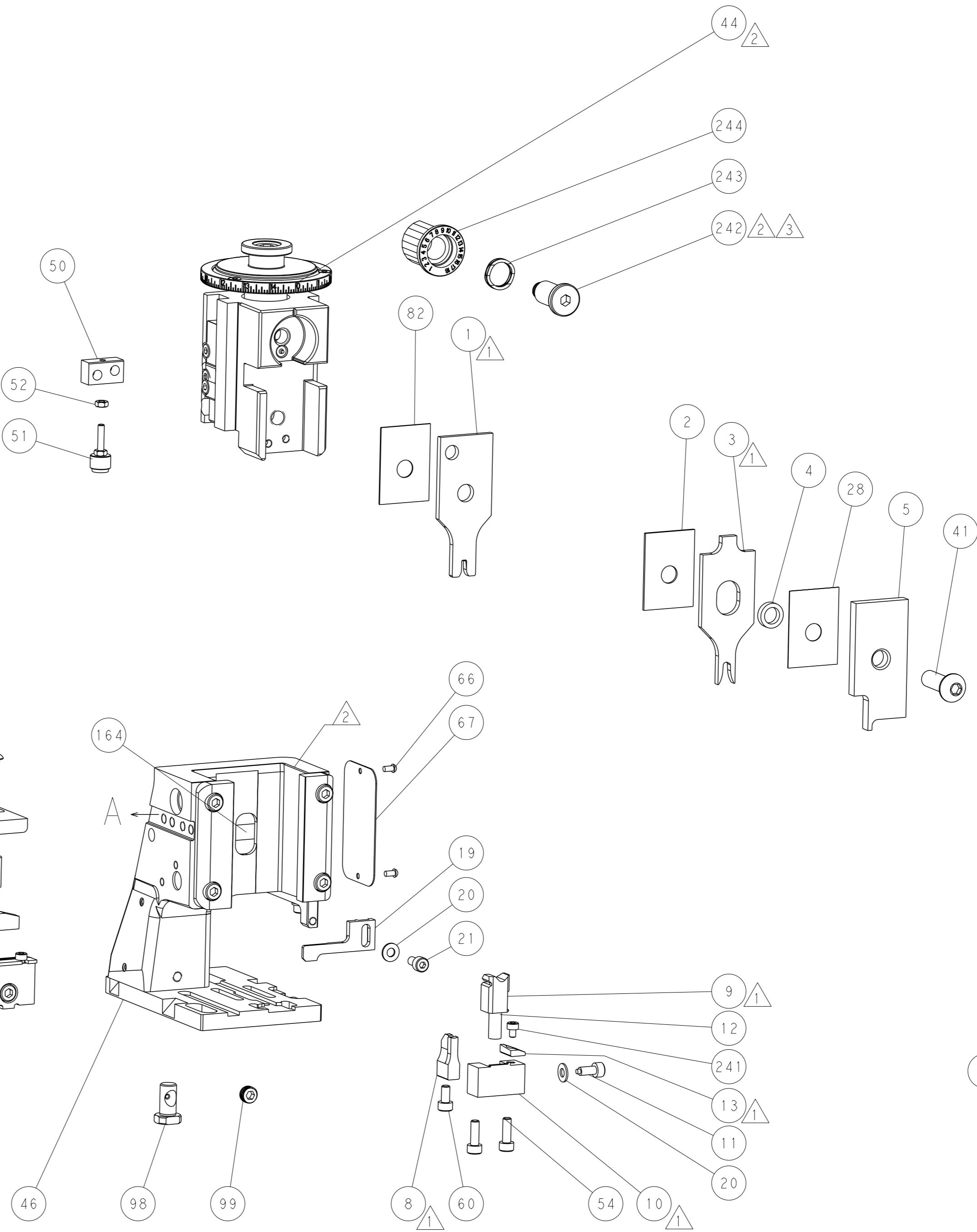
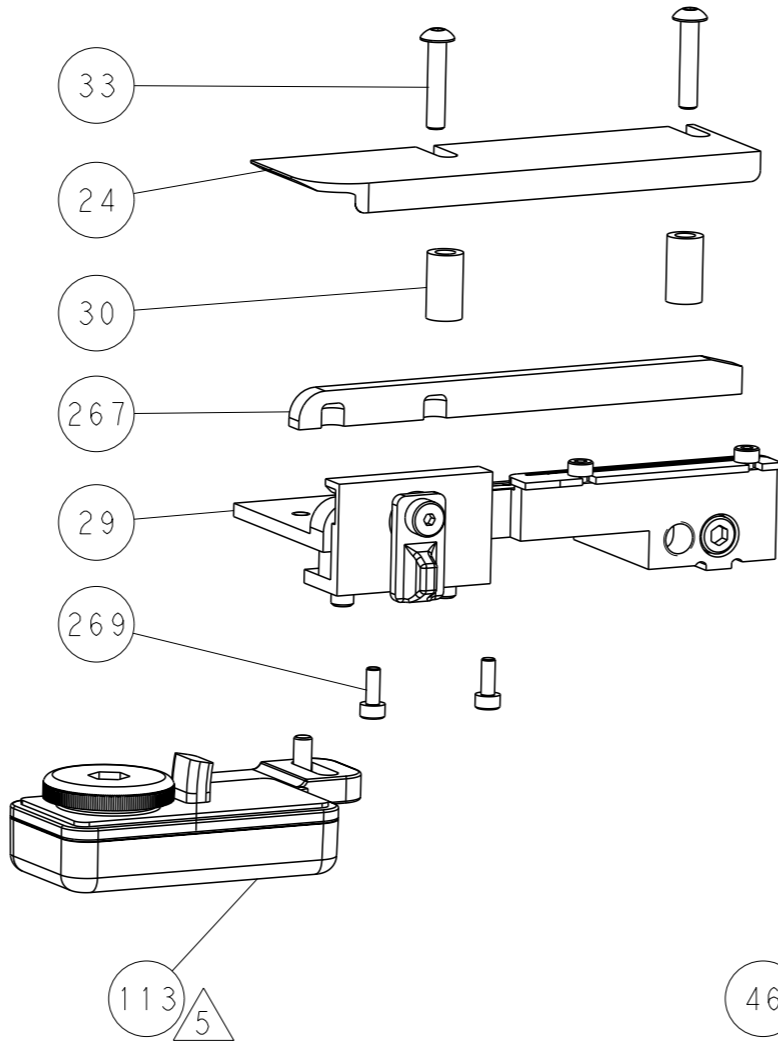
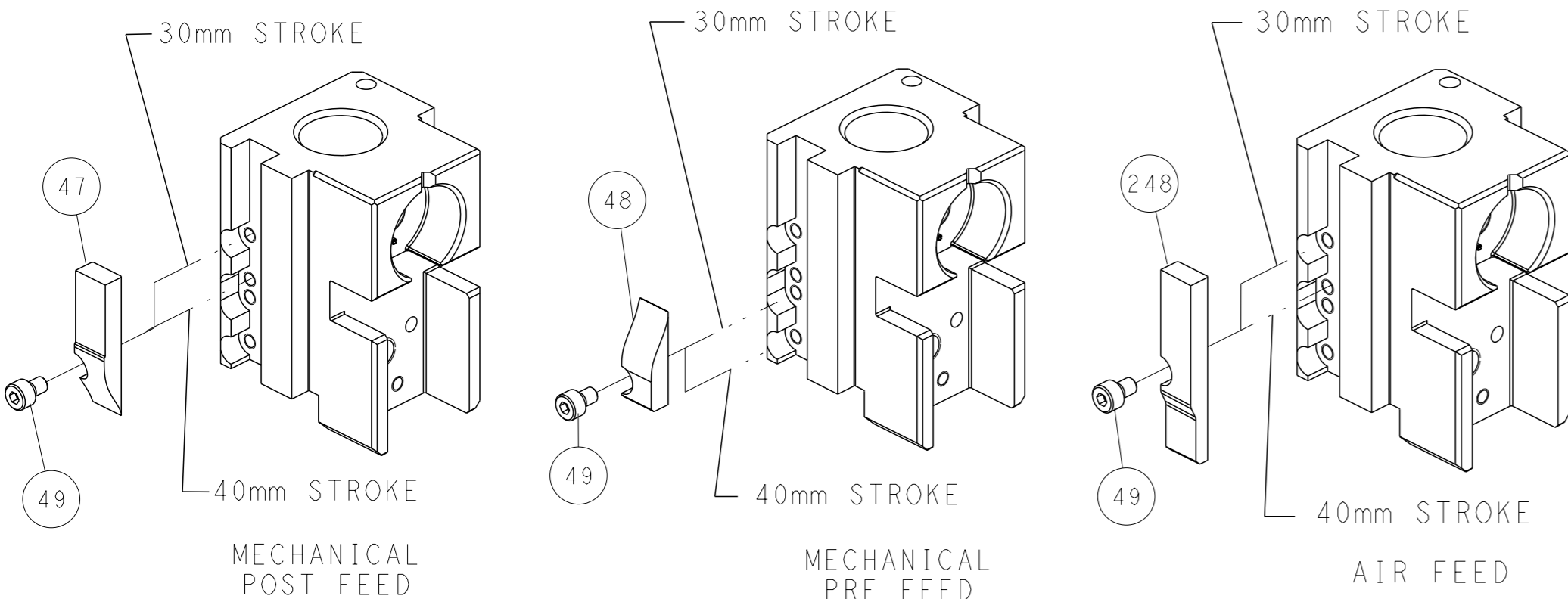


FEED SPRING SETTING POSITION (SHOWN FROM REAR SIDE)

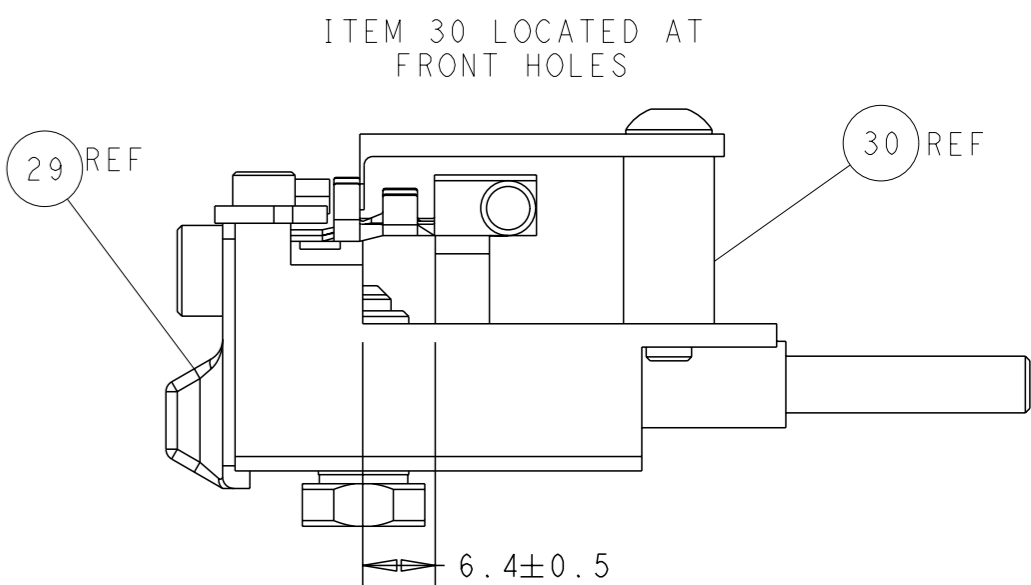


DETAIL A

CAM POSITIONS



RAM SET-UP



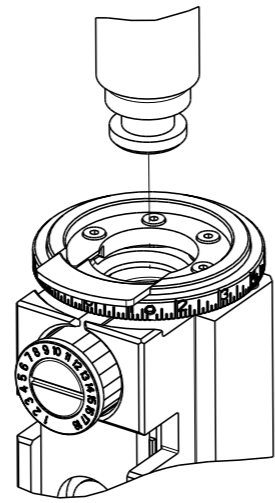
FEED TRACK POSITION
GUIDE BY INSULATION BARREL

ATLANTIC VERSION
Shown on sheets 1 of 4 & 2 of 4
(Pacific version shown on sheets 3 of 4 & 4 of 4)



THIS DRAWING IS A CONTROLLED DOCUMENT FOR TYCO ELECTRONICS CORPORATION. IT IS SUBJECT TO CHANGE AND TO THE CONTROL AND ENGINEERING ORGANIZATION. SHOULD BE CONTACTED FOR THE LATEST REVISION.				DWN B. WEAVER 09JUL2015	TE Connectivity Harrisburg, PA 17105-3608	
				CHK T. ELBIN 09JUL2015		
				APVD T. ELBIN 09JUL2015	NAME Ocean Side Feed Applicator	
				PRODUCT SPEC		
				APPLICATION SPEC		
				WEIGHT		
				Customer Accessible Production Drawing		
				SCALE 1:2	SHEET 2 of 4	
				REV C		

8		7	
THIS DRAWING IS UNPUBLISHED.		RELEASED FOR PUBLICATION	
2015		2015	
© COPYRIGHT 2015		BY TYCO ELECTRONICS CORPORATION. ALL RIGHTS RESERVED.	
PART NUMBER	REVISION	DESCRIPTION	FEED TYPE
2-2266830-1	C	FINE CRIMP HEIGHT ADJUST	MECHANICAL
2-2266830-2	C	FINE CRIMP HEIGHT ADJUST	PNEUMATIC
7-2266830-7	B	CRIMP TOOLING KIT	-

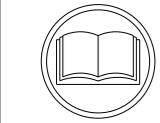
PACIFIC VERSION TERMINATOR
INTERFACE ADAPTER



APPLICATOR DATA		
CRIMP	SIZE	TYPE
WIRE	2.29 mm [.090]	F
INSUL	3.94 mm [.155]	OV
APPLICATOR INSTRUCTIONS 408-35042		

TERMINAL DATA: TE TERMINAL		TE CRIMP SPECIFICATION	
TERMINAL NAME: TERMINAL, SHUR PLUG RECEPTACLE			
WIRE STRIP LENGTH 3.90-4.70 mm [.154-.185 IN]			INSULATION DIAMETER RANGE Ø2.54-3.56 mm [.100-.140 IN]
TERMINAL APPLICATION SPECIFICATION	114-3118	-	-
TERMINALS APPLIED 			
TE TERMINAL	TE TERMINAL	TE TERMINAL	TE TERMINAL
1-150656-1	1-150656-2	150655	150554-3

WIRE SIZE	CRIMP HEIGHT mm [INCH]	CRIMP HEIGHT REFERENCE SETTING
1.50mm2	1.98+/-0.05 [.078+/- .002]	5.1
16 AWG	1.93+/-0.05 [.076+/- .002]	5.6
1.00mm2	1.80+/-0.05 [.071+/- .002]	7.0
18 AWG OR 0.80mm2	1.75+/-0.05 [.069+/- .002]	7.5
0.75mm2	1.73+/-0.05 [.068+/- .002]	7.8
20 AWG OR 0.50mm2	1.65+/-0.05 [.065+/- .002]	8.6



- 1 RECOMMENDED SPARE PARTS
- 2 REFER TO SUPPLIED INSTRUCTION SHEET FOR CLEANING, LUBRICATION AND STORAGE OF APPLICATOR.
- 3 APPLY PART NUMBER 2-23419-6 LOCTITE TO THREADS OF ITEM 242.
- 4 CRIMP HEIGHT REFERENCE SETTING WAS THE SETTING USED WHEN THE APPLICATOR WAS QUALIFIED AT THE FACTORY. ADJUSTMENT MAY BE NECESSARY WHEN RUNNING APPLICATOR IN THE FIELD.
- 5 TERMINAL LUBRICANT IS RECOMMENDED.

6. UNLESS SPECIFIED OTHERWISE TORQUE VALUES SHALL BE USED PER DOCUMENT, 101-35000.

*WARNING
ON INSTALLATION, SET WIRE DISC TO CRIMP HEIGHT REFERENCE SETTING FOR LARGEST WIRE SIZE. CRIMP HEIGHT REFERENCE SETTINGS GREATER THAN THE VALUE SHOWN MAY CAUSE DAMAGE TO THE CRIMP TOOLING, REFER TO THE INSTRUCTION SHEET FOR PROPER SETUP AND ADJUSTMENTS.

PACIFIC VERSION
Shown on sheets 3 of 4 & 4 of 4
(Atlantic version shown on sheets 1 of 4 & 2 of 4)

LOC	DIST	REVISIONS				
		P	LYR	DESCRIPTION	DATE	OWN
A	66	-	-	SEE SHEET 1	-	-

-	2	2	2168083-1	SCR, SKT HD CAP, RoHS, M3 X 8.0	269
-	1	1	1633782-3	FENCE	267
-	1	1	2119082-7	CAM, SNAIL, INSULATION ADJUSTMENT	244
-	1	1	2079764-1	WASHER, WAVE SPRING, CREST-TO-CREST	243
-	1	1	2119083-1	RETAINER, INSULATION DIAL	242
-	1	1	7-18023-7	SCR, SKT HD CAP M3 X 4.0	241
-	-	1	2119580-1	MECHANICAL FEED ASSEMBLY	239
-	1	-	2844940-1	AIR FEED MODULE	238
-	REF	REF	994970-2	COUNTER, MAGNETIC	164
-	1	-	2119641-2	FEED CAM, AIR FEED	151
-	1	1	2168083-8	SCR, SKT HD CAP, RoHS, M4 X 16	144
-	2	2	2168083-9	SCR, SKT HD CAP, RoHS, M4 X 20	143
-	-	1	2119653-2	FEED CAM, POST FEED	142
-	1	1	1-1803583-0	APPLICATOR BASIC ASSEMBLY, SF	141
-	1	1	1803516-1	RAM ASSEMBLY, SF PACIFIC	140
-	1	1	2119955-1	ASSY, LUBRICATOR, SIDE FEED	113
-	1	1	2844908-1	SCREW, LOCKING	99
-	1	1	2844907-1	POST, LOCKING	98
-	1	1	455888-5	SPACER, CRIMPER	82
-	1	1	1803607-3	DOCUMENTATION PACKAGE	71
-	1	1	2119740-1	TAG, IDENTIFICATION	67
-	2	2	2168078-1	SCREW, DRIVE, RH, RoHS, 2 x .188	66
-	1	1	5-18022-5	SCR, HEX HD CAP, M4 X 6.0	59
-	1	1	1338683-8	FEED PAWL	56
-	2	2	1-2168083-0	SCR, SKT HD CAP, RoHS, M4 X 10	53
-	1	1	5018030-1	NUT, HEX, REG, RoHS, M3	52
-	1	1	811242-5	BUMPER, HOLD DOWN	51
-	1	1	690753-2	SPACER, TONKER	50
-	1	2	18023-9	SCR, SKT HD CAP M4 X 6.0	49
-	-	1	2119652-1	FEED CAM, PRE FEED	48
-	1	1	1803602-1	SCR, BHSC, RoHS (M8 X 25)	41
-	2	2	2079383-5	SCR, BHSC, RoHS (M4 X 20)	33
-	2	2	2-2844962-8	SPACER, CYLINDRICAL, STRIP GUIDE	30
-	1	1	2844992-1	ASSEMBLY, STRIP GUIDE	29
-	1	1	455888-3	SPACER, CRIMPER	28
-	1	1	1320928-2	STRIP GUIDE	24
-	1	1	2168083-2	SCR, SKT HD CAP, RoHS, M4 X 8.0	21
-	2	2	1-18028-2	WASHER, FLAT, REG M4	20
-	1	1	2119533-1	STRIPPER, SIDE FEED	19
-	1	1	2119806-1	INSERT, SHEAR	13
-	1	1	3-22280-3	SPRING, COMPRESSION	12
-	1	1	1-356885-4	STOP, SHEAR	11
-	1	1	2119805-1	SHEAR HOLDER, FRONT	10
-	1	1	1803095-1	FLOATING SHEAR, FRONT -	9
1	1	1	1-1333205-2	ANVIL, COMBINATION	8
-	-	-	-	-	7
-	-	-	-	-	6
-	1	1	1-2119757-0	DEPRESSOR, SHEAR	5
-	1	1	238011-2	BLOCK, CRIMPER SPACER	4
1	1	1	9-2119785-4	CRIMPER, INSULATION OVERLAP PREMIUM	3
-	1	1	455888-9	SPACER, CRIMPER	2
1	1	1	4-456406-7	CRIMPER, WIRE PREMIUM	1

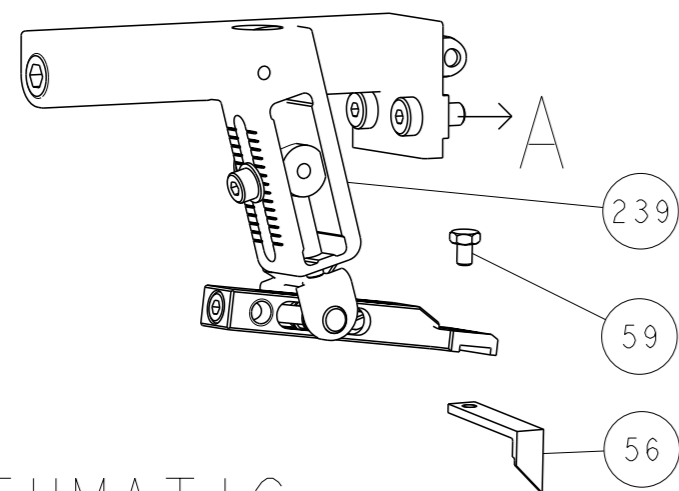


THIS DRAWING IS CONTROLLED DOCUMENT FOR THE ELECTRONIC CORPORATION IT IS SUBJECT TO CHANGE AND TO BE USED FOR THE LATEST REVISION SHALL BE CONTACTED FOR THE LATEST REVISION		OWN D. WEAVER 09JUL2015	TE Connectivity Harrisburg, PA 17105-3608	
DIMENSIONS: mm		CHK T. ELBIN 09JUL2015	NAME Ocean Side Feed Applicator	
TOLERANCES UNLESS OTHERWISE SPECIFIED: 0 PLC ± 1 PLC ± 2 PLC ± 3 PLC ± 4 PLC ± ANGLES ±		APVD T. ELBIN 09JUL2015	PRODUCT SPEC	
MATERIAL		SIZE A1	CAGE CODE 00779	DRAWING NO C=2266830
FINISH		WEIGHT	SCALE 1:2	RESTRICTED TO 3 OF 4
Customer Accessible Production Drawing		REV C		

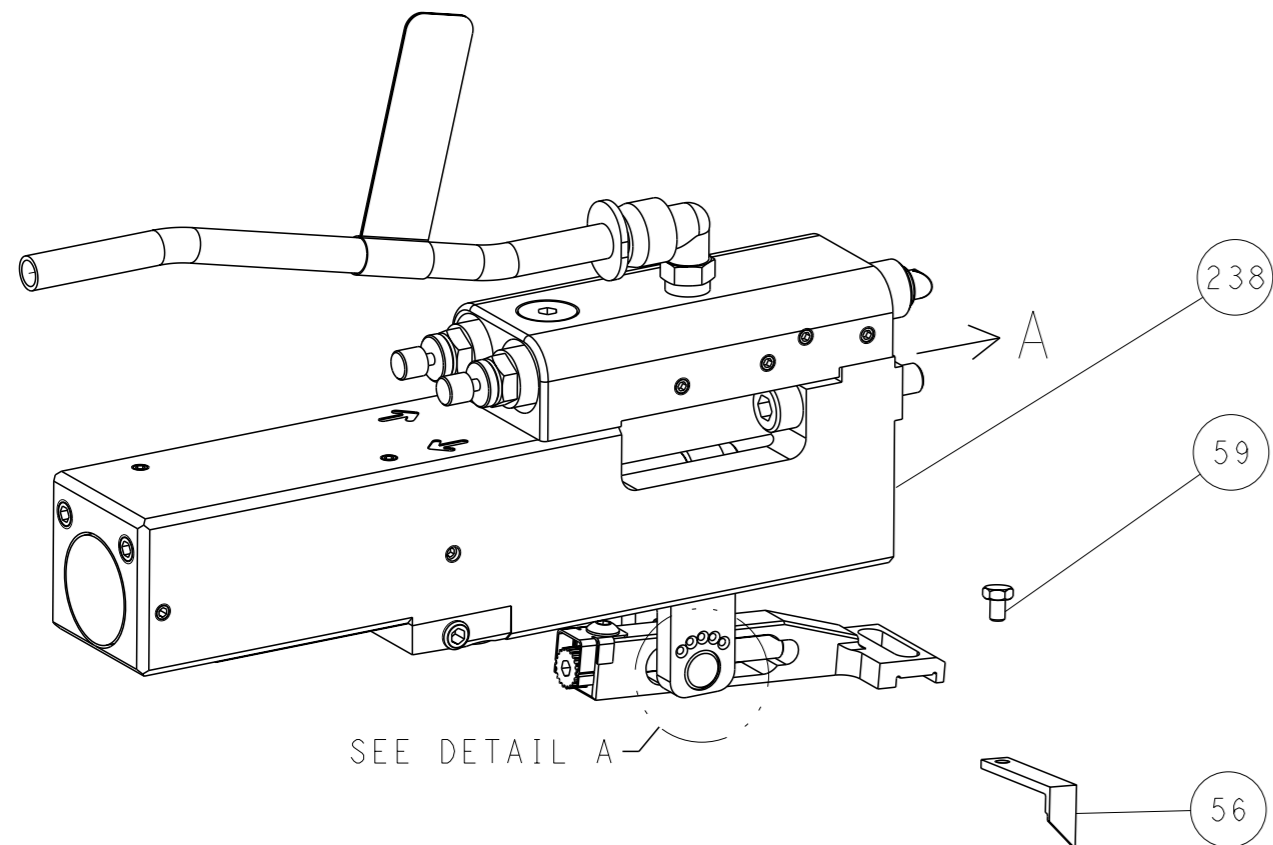
SHEETS 1 & 2 ARE NOT REQUIRED FOR PACIFIC VERSION

LOC		DIST		REVISIONS				
A	66	P	LYR	DESCRIPTION	DATE	DWN	APVD	
		-		SEE SHEET 1	-	-	-	

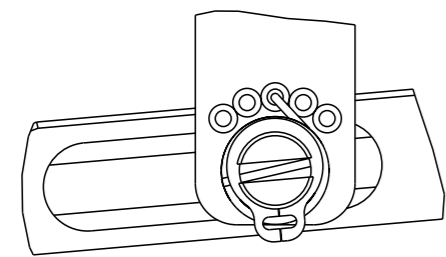
FEED TYPE MECHANICAL



PNEUMATIC

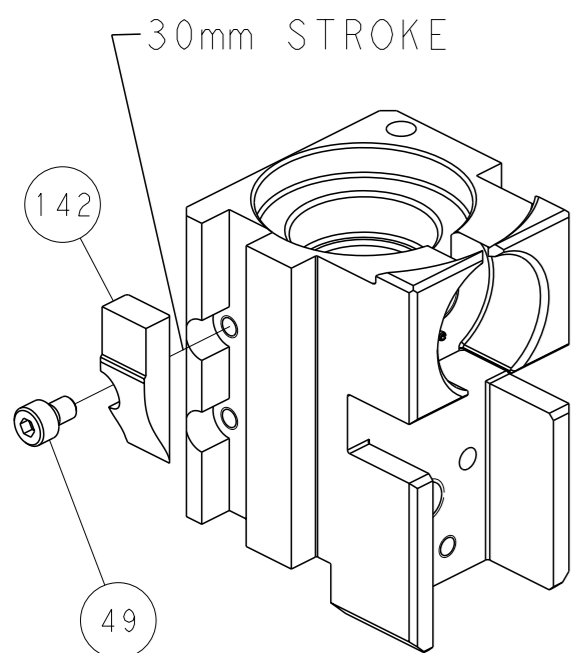


FEED SPRING SETTING POSITION
(SHOWN FROM REAR SIDE)

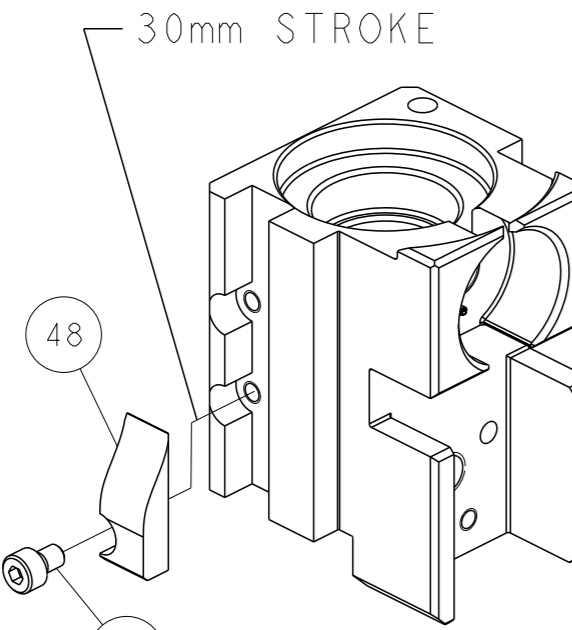


DETAIL A

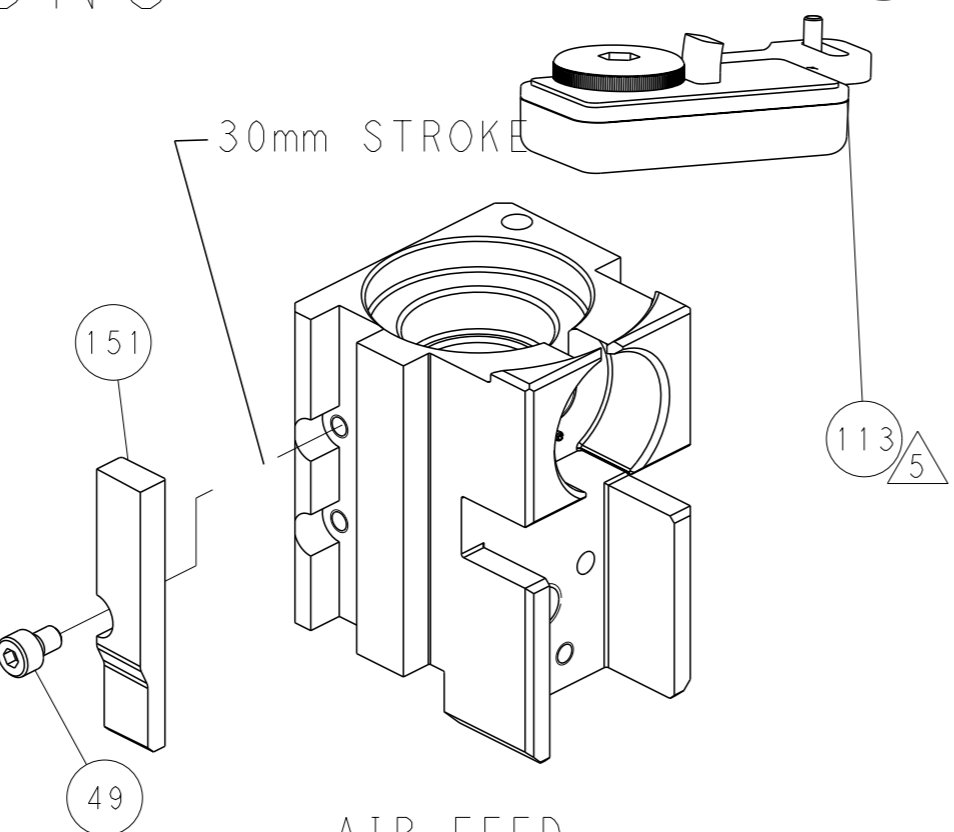
CAM POSITIONS



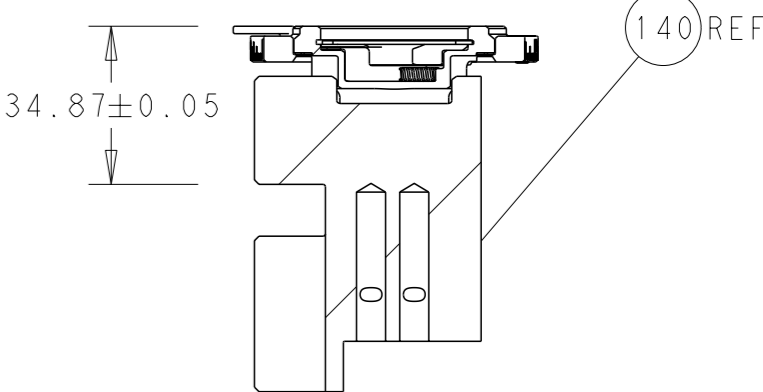
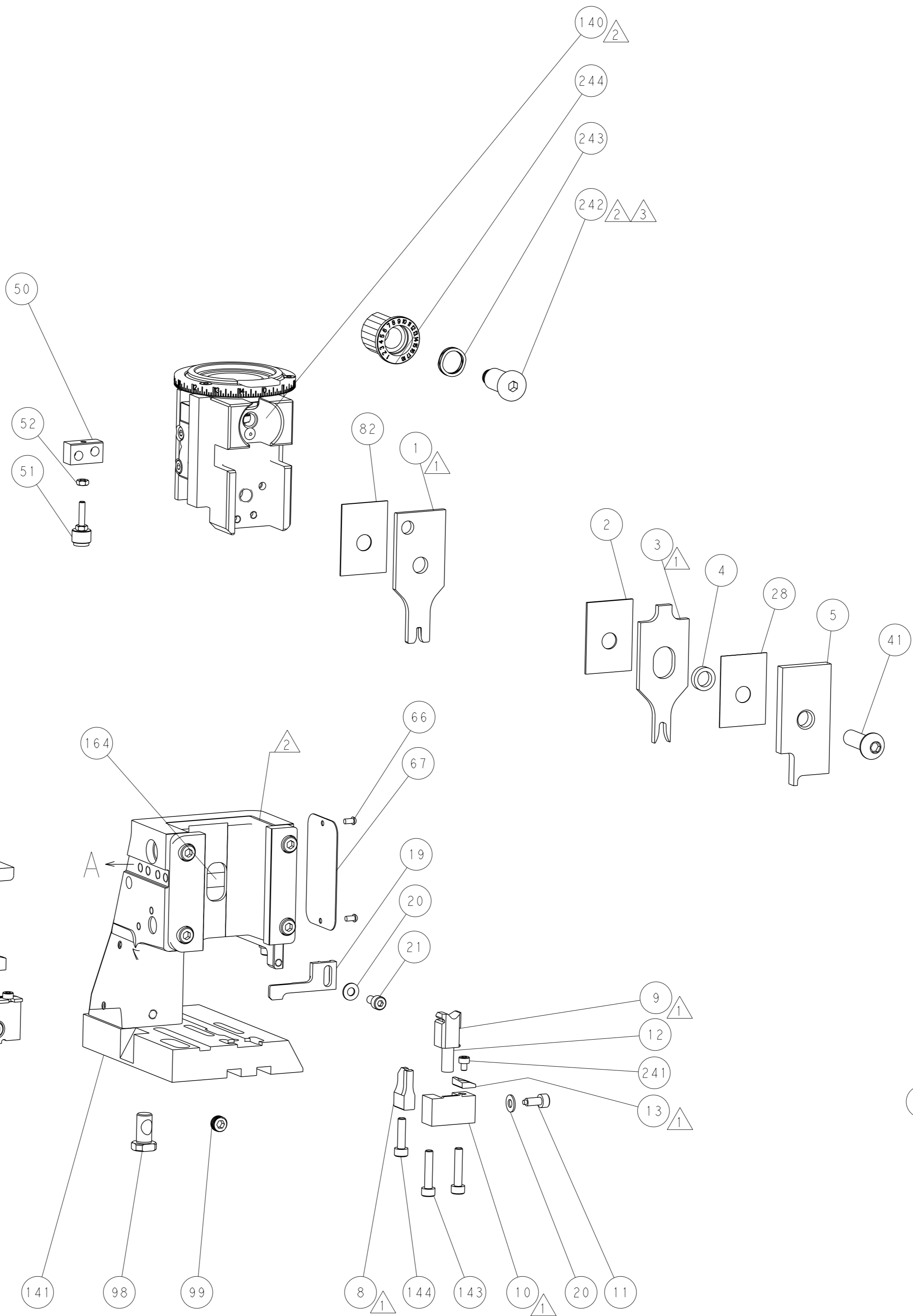
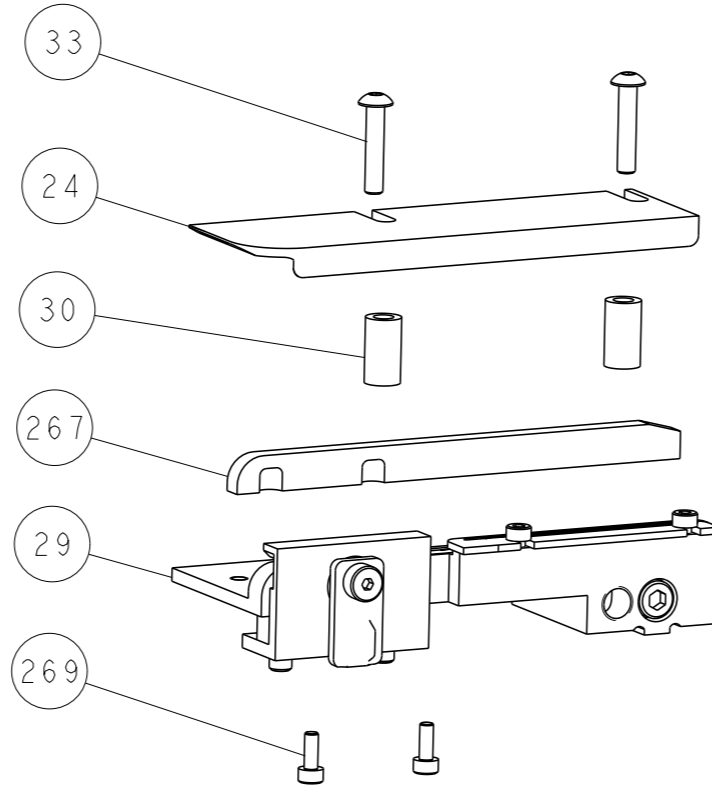
MECHANICAL
POST FEED



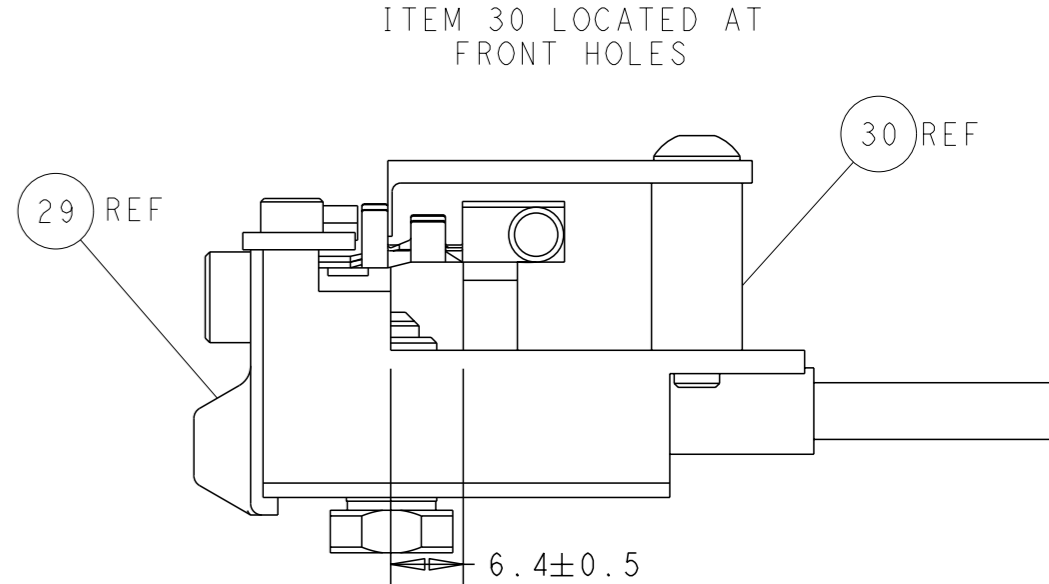
MECHANICAL
PRE FEED



AIR FEED




RAM SET-UP



FEED TRACK POSITION
GUIDE BY INSULATION BARREL

PACIFIC VERSION
Shown on sheets 3 of 4 & 4 of 4
(Atlantic version shown on sheets 1 of 4 & 2 of 4)

THIS DRAWING IS A CONTROLLED DOCUMENT FOR TYCO ELECTRONICS CORPORATION. IT IS SUBJECT TO CHANGE AND TO THE CONTROL AND ENGINEERING ORGANIZATION. SHOULD BE CONTACTED FOR THE LATEST REVISION.				DWN B. WEAVER 09JUL2015	 TE Connectivity Harrisburg, PA 17105-3608							
				CHK T. ELBIN 09JUL2015								
				APVD T. ELBIN 09JUL2015	NAME Ocean Side Feed Applicator							
DIMENSIONS: mm				PRODUCT SPEC								
				APPLICATION SPEC								
TOLERANCES UNLESS OTHERWISE SPECIFIED: 0 PLC ± 1 PLC ± 2 PLC ± 3 PLC ± 4 PLC ± ANGLES ± FINISH ±				WEIGHT								
MATERIAL				Customer Accessible Production Drawing								
				SCALE 1:2 SHEET 4 OF 4 REV C								

Mouser Electronics

Authorized Distributor

Click to View Pricing, Inventory, Delivery & Lifecycle Information:

[TE Connectivity:](#)

[2266830-1](#)