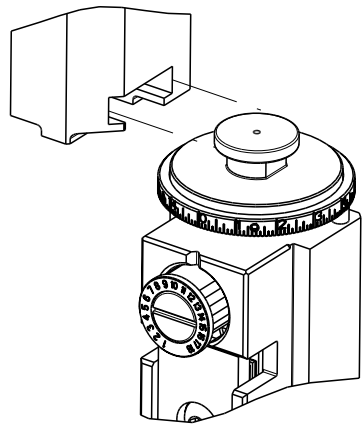
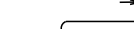



8		7	
THIS DRAWING IS UNPUBLISHED.		RELEASED FOR PUBLICATION	
20		20	
© COPYRIGHT 20		BY TYCO ELECTRONICS CORPORATION. ALL RIGHTS RESERVED.	
PART NUMBER	REVISION	DESCRIPTION	FEED TYPE
2151959-1	C	FINE CRIMP HEIGHT ADJUST	MECHANICAL
2151959-2	C	FINE CRIMP HEIGHT ADJUST	PNEUMATIC
7-2151959-1	C	MECHANICAL AND CRIMP TOOLING KIT	MECHANICAL
7-2151959-2	C	PNEUMATIC AND CRIMP TOOLING KIT	PNEUMATIC
7-2151959-7	A	CRIMP TOOLING KIT	-

ATLANTIC VERSION TERMINATOR
INTERFACE ADAPTER



APPLICATOR DATA		
CRIMP	SIZE	TYPE
WIRE	3.43 mm [.135]	F
INSUL	4.65 mm [.183]	F
APPLICATOR INSTRUCTIONS 408-35042		

TERMINAL DATA: YAZAKI TERMINAL		YAZAKI CRIMP SPECIFICATION	
TERMINAL NAME: TERMINAL			
WIRE STRIP LENGTH 5.00-5.50 mm [.197-.217 IN]		 INSULATION DIAMETER RANGE Ø3.90-3.98 mm [.154-.157 IN]	
TERMINAL APPLICATION SPECIFICATION		YAZAKI Rev - - -	
 YAZAKI 7114-4032		- - -	
TERMINALS APPLIED			
TE TERMINAL	YAZAKI TERMINAL	TE TERMINAL	YAZAKI TERMINAL
286608-1	7116-4032	1949060-1	7114-4032

WIRE SIZE	CRIMP HEIGHT mm [INCH]	CRIMP HEIGHT REFERENCE SETTING
3.00mm2	2.00+/-0.05 [.079+/- .002]	7.1
2.00mm2	1.80+/-0.05 [.071+/- .002]	9.2



- 1

RECOMMENDED SPARE PARTS
- 2

REFER TO SUPPLIED INSTRUCTION SHEET FOR CLEANING, LUBRICATION AND STORAGE OF APPLICATOR.
- 3

APPLY PART NUMBER 2-23419-6 LOCTITE TO THREADS OF ITEM 242.
- 4

CRIMP HEIGHT REFERENCE SETTING WAS THE SETTING USED WHEN THE APPLICATOR WAS QUALIFIED AT THE FACTORY. ADJUSTMENT MAY BE NECESSARY WHEN RUNNING APPLICATOR IN THE FIELD.
5. UNLESS SPECIFIED OTHERWISE TORQUE VALUES SHALL BE USED PER DOCUMENT, 101-35000.

*WARNING
ON INSTALLATION, SET WIRE DISC TO CRIMP HEIGHT REFERENCE SETTING FOR LARGEST WIRE SIZE. CRIMP HEIGHT REFERENCE SETTINGS GREATER THAN THE VALUE SHOWN MAY CAUSE DAMAGE TO THE CRIMP TOOLING, REFER TO THE INSTRUCTION SHEET FOR PROPER SETUP AND ADJUSTMENTS.

ATLANTIC VERSION
Shown on sheets 1 of 4 & 2 of 4
(Pacific version shown on sheets 3 of 4 & 4 of 4)

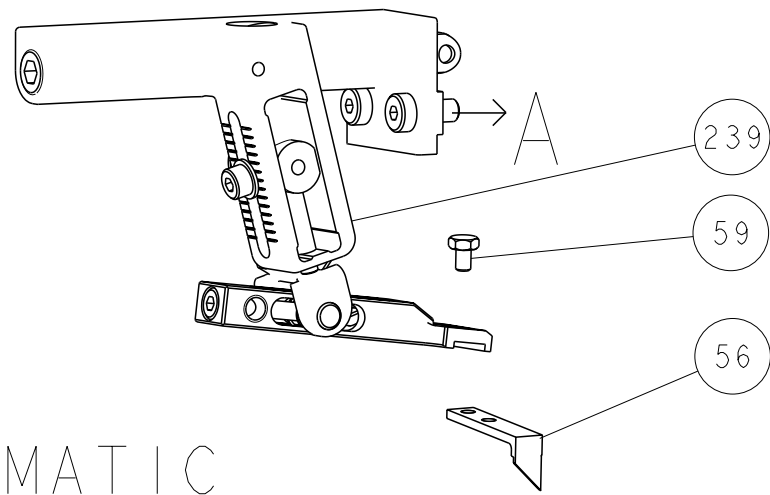
2		1					
LOC	DIST	REVISIONS					
A	66	P	LTR	DESCRIPTION	DATE	DWN	APVD
		A		RELEASED	15JUL2013	CC	BG
		B		ECR-17-017234	22NOV2017	JAH	TE
		C		ECR-19-014396	13SEP2019	JAH	RK

8	-	1	-	1	-	2119641-1	FEED CAM, AIR FEED	248
	-	1	1	1	1	2119082-7	CAM, SNAIL, INSULATION ADJUSTMENT	244
	-	1	1	1	1	2079764-1	WASHER, WAVE SPRING, CREST-TO-CREST	243
	-	1	1	1	1	2119083-1	RETAINER, INSULATION DIAL	242
	-	1	1	1	1	7-18023-7	SCR, SKT HD CAP M3 X 4.0	241
	-	-	1	-	1	2119580-1	MECHANICAL FEED ASSEMBLY	239
	-	1	-	1	-	2844940-1	AIR FEED MODULE	238
	-	REF	REF	REF	REF	994970-2	COUNTER, MAGNETIC	164
	-	1	1	1	1	1-18028-2	WASHER, FLAT, REG M4	119
	-	1	1	1	1	2844908-1	SCREW, LOCKING	99
	-	1	1	1	1	2844907-1	POST, LOCKING	98
	-	1	1	1	1	455888-4	SPACER, CRIMPER	82
	-	1	1	1	1	1803607-3	DOCUMENTATION PACKAGE	71
	-	1	1	1	1	2119740-1	TAG, IDENTIFICATION	67
	-	2	2	2	2	2168078-1	SCREW, DRIVE, RH, RoHS, 2 x .188	66
	-	1	1	1	1	2168083-2	SCR, SKT HD CAP, RoHS, M4 X 8.0	60
	-	1	1	1	1	5-18022-5	SCR, HEX HD CAP, M4 X 6.0	59
	-	1	1	1	1	1338685-1	PAWL, FEED	56
	-	4	4	4	4	2168083-3	SCR, SKT HD CAP, RoHS, M4 X 12.0	54
	-	2	2	2	2	1-2168083-0	SCR, SKT HD CAP, RoHS, M4 X 10	53
	-	1	1	1	1	1803382-6	HOLD DOWN, SPRING LOADED	50
	-	1	2	1	2	18023-9	SCR, SKT HD CAP M4 X 6.0	49
	-	-	1	-	1	2119652-1	FEED CAM, PRE FEED	48
	-	-	1	-	1	2119653-1	FEED CAM, POST FEED	47
	-	1	1	1	1	1803583-9	APPLICATOR BASIC ASSEMBLY, SF	46
	-	1	1	1	1	1803515-1	RAM ASSEMBLY, SF ATLANTIC	44
	-	1	1	1	1	1803602-1	SCR, BHSC, RoHS (M8 X 25)	41
	-	1	1	1	1	1752356-1	SUPPORT, TERMINAL	34
	-	2	2	2	2	2079383-5	SCR, BHSC, RoHS (M4 X 20)	33
	-	2	2	2	2	3-2844962-0	SPACER, CYLINDRICAL, STRIP GUIDE	30
	-	1	1	1	1	2844992-1	ASSEMBLY, STRIP GUIDE	29
	-	1	1	1	1	1-455888-0	SPACER, CRIMPER	28
	-	1	1	1	1	1320928-6	STRIP GUIDE	24
	-	1	1	1	1	2168083-2	SCR, SKT HD CAP, RoHS, M4 X 8.0	21
	-	1	1	1	1	1-18028-2	WASHER, FLAT, REG M4	20
	-	1	1	1	1	2119533-1	STRIPPER, SIDE FEED	19
1	-	1	1	1	1	2119806-1	INSERT, SHEAR	13
	-	1	1	1	1	3-22280-3	SPRING, COMPRESSION	12
	-	1	1	1	1	1-356885-4	STOP, SHEAR	11
	-	1	1	1	1	2119805-1	SHEAR HOLDER, FRONT	10
1	-	1	1	1	1	462006-6	FLOATING SHEAR, FRONT	9
	1	2	2	1	1	3-1633932-0	ANVIL, COMBINATION	8
	-	-	-	-	-	-	-	7
	-	-	-	-	-	-	-	6
	-	1	1	1	1	1-2119757-0	DEPRESSOR, SHEAR	5
	-	1	1	1	1	238011-4	BLOCK, CRIMPER SPACER	4
	1	2	2	1	1	7-1633961-1	CRIMPER, INSULATION F PREMIUM	3
	-	1	1	1	1	455888-4	SPACER, CRIMPER	2
1	1	2	2	1	1	2-1633305-6	CRIMPER, WIRE PREMIUM	1
	-77	-72	-71	-2	-1	PART NO	DESCRIPTION	ITEM NO

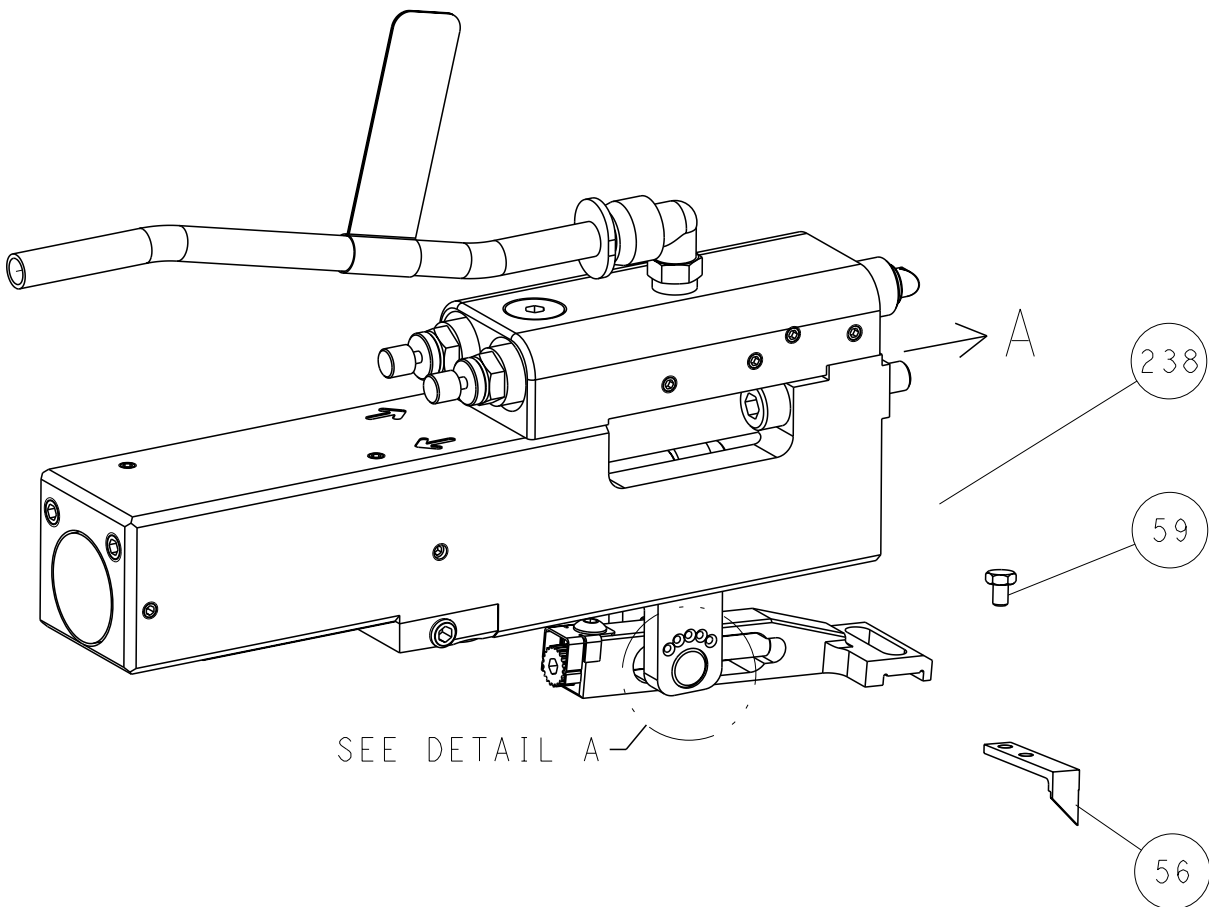
THIS DRAWING IS UNPUBLISHED. IT IS SUBJECT TO CHANGE AND TO BE OBSOLETE WITHOUT NOTICE. THE USER SHALL BE CONTACTED FOR THE LATEST REVISION.				DWN C. CHEN 31MAY2013	TE Connectivity Harrisburg, PA 17105-3608			
DIMENSIONS:				CHK U. GUO 31MAY2013	NAME			
mm				APVD J. CRUZ 31MAY2013	Ocean Side Feed Applicator			
TOLERANCES UNLESS OTHERWISE SPECIFIED:				PRODUCT SPEC	SIZE			
0 PLC ±				APPLICATION SPEC	CAGE CODE			
1 PLC ±				FINISH	DRAWING NO			
2 PLC ±				WEIGHT	RESTRICTED TO			
3 PLC ±				Customer Accessible Production Drawing	SCALE			
4 PLC ±				100779	1:2			
MATERIAL				©=2151959	SHEET			
-				1 of 4	REV			
-				C				

LOC	DIST	REVISIONS					
		P	LYR	DESCRIPTION	DATE	DWN	APVD
A	66		-	SEE SHEET 1	-	-	-

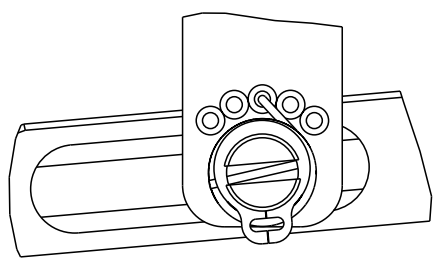
FEED TYPE
MECHANICAL



PNEUMATIC

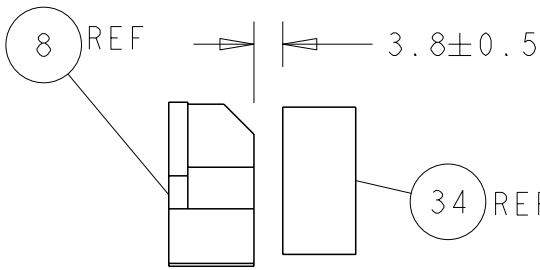
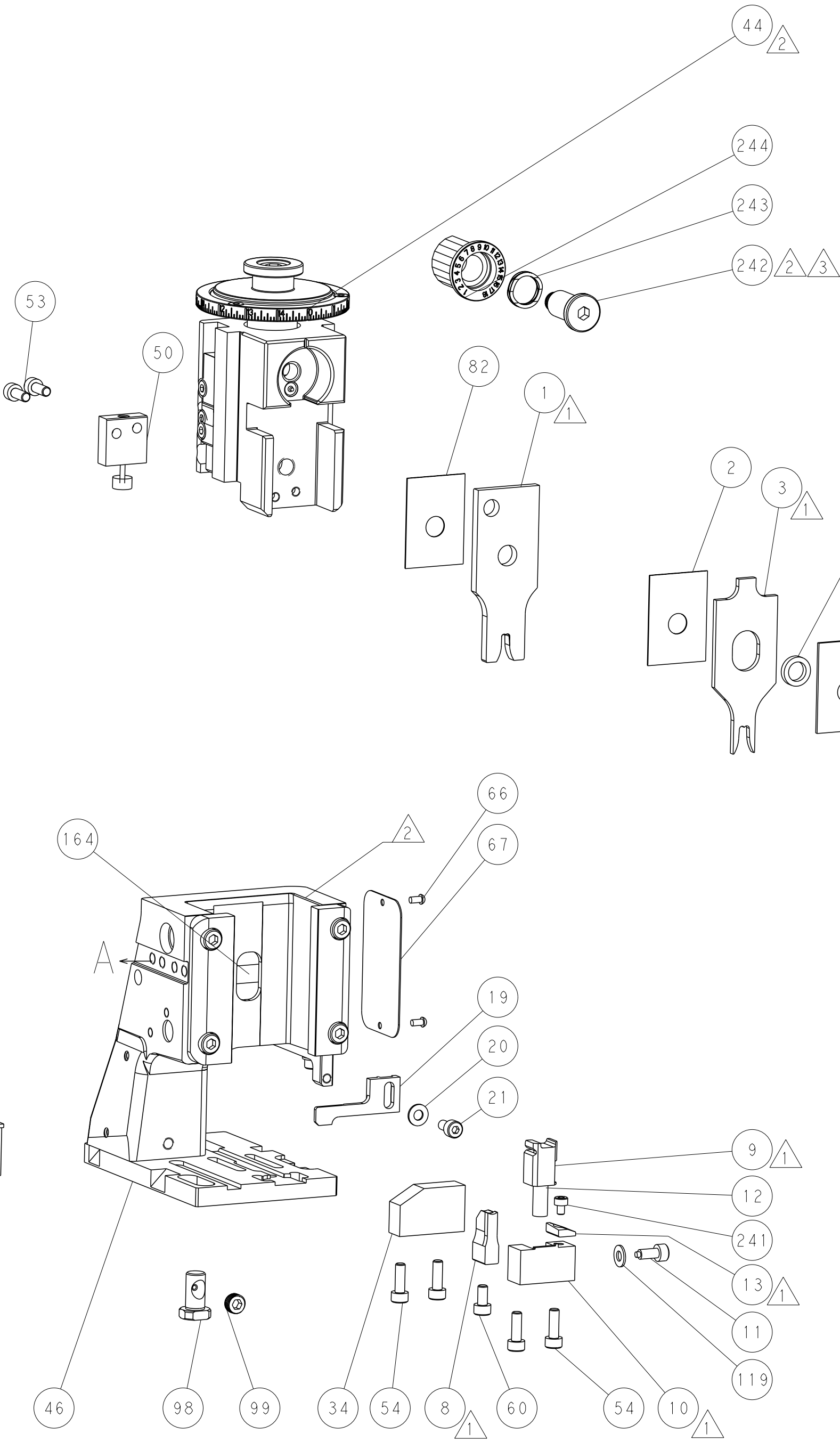
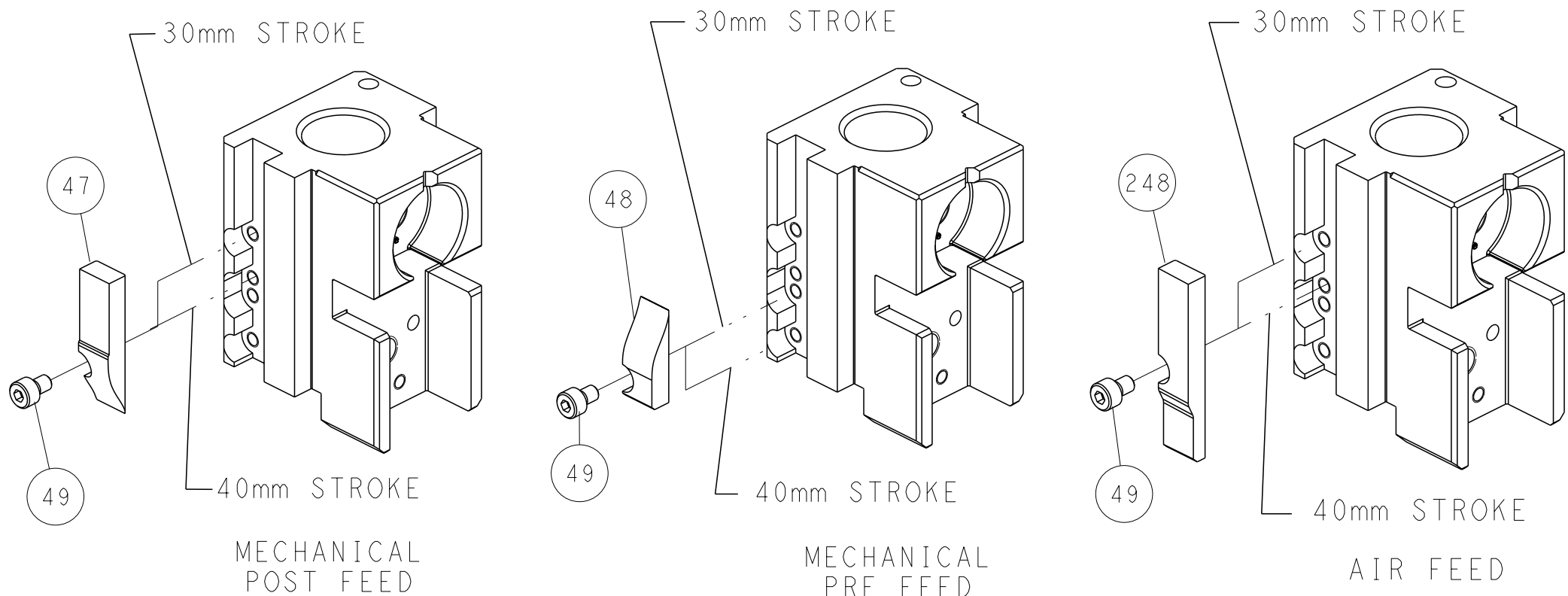


FEED SPRING SETTING POSITION
(SHOWN FROM REAR SIDE)

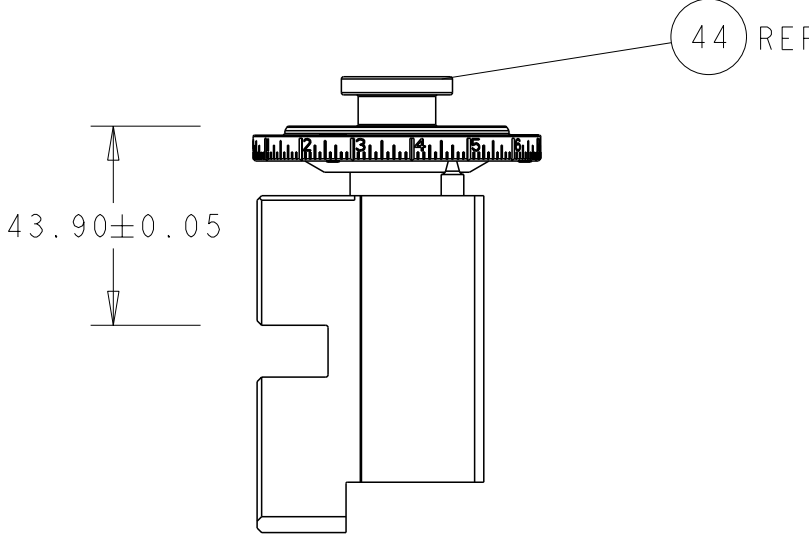


DETAIL A

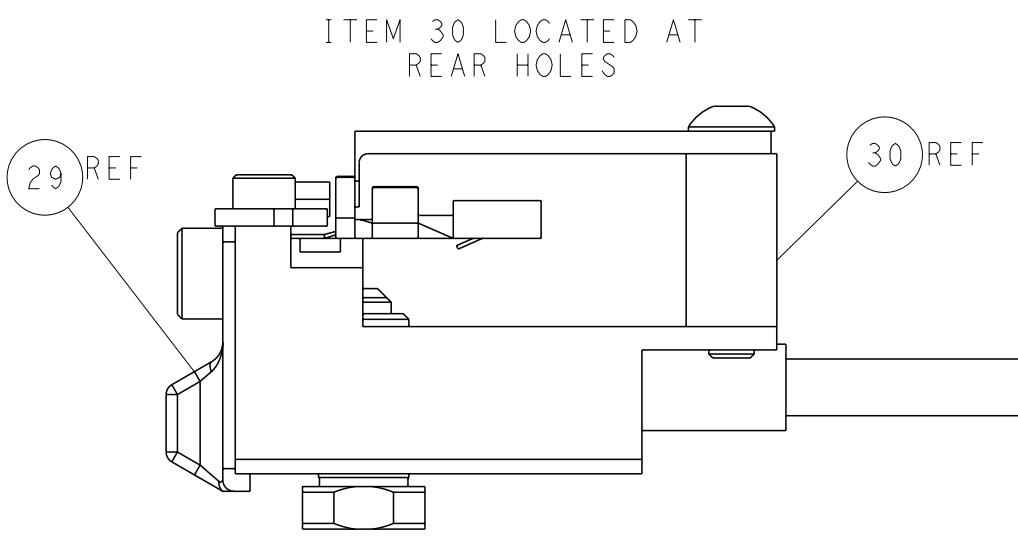
CAM POSITIONS



TERMINAL SUPPORT LOCATION




RAM SET-UP



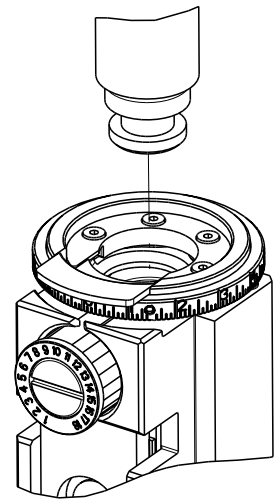
FEED TRACK POSITION
GUIDE BY INSULATION BARREL

ATLANTIC VERSION
Shown on sheets 1 of 4 & 2 of 4
(Pacific version shown on sheets 3 of 4 & 4 of 4)



THIS DRAWING IS A CONTROLLED DOCUMENT FOR YOUR ELECTRONICS CORPORATION IT IS SUBJECT TO CHANGE AND TO CONTROL THE ENGINEERING ORGANIZATION SHOULD BE CONTACTED FOR THE LATEST REVISION				DWN C. CHEN	31MAY2013	 TE Connectivity Harrisburg, PA 17105-3608	NAME Ocean Side Feed Applicator	
				CHK U. GUO	31MAY2013			
				APVD J. CRUZ	31MAY2013			
				PRODUCT SPEC				
				APPLICATION SPEC		SIZE A1		RESTRICTED TO -
				WEIGHT -		CAGE CODE 00779 C=2151959		
				Customer Accessible Production Drawing		SCALE 1:2		SHEET 2
						DRAWING NO C=2151959		
						REV C		

8		7	
THIS DRAWING IS UNPUBLISHED.		RELEASED FOR PUBLICATION	
20		20	
© COPYRIGHT 20 BY TYCO ELECTRONICS CORPORATION. ALL RIGHTS RESERVED.			
PART NUMBER	REVISION	DESCRIPTION	FEED TYPE
2-2151959-1	C	FINE CRIMP HEIGHT ADJUST	MECHANICAL
2-2151959-2	C	FINE CRIMP HEIGHT ADJUST	PNEUMATIC
7-2151959-7	A	CRIMP TOOLING KIT	-

PACIFIC VERSION TERMINATOR
INTERFACE ADAPTER



APPLICATOR DATA		
CRIMP	SIZE	TYPE
WIRE	3.43 mm [.135]	F
INSUL	4.65 mm [.183]	F
APPLICATOR INSTRUCTIONS 408-35042		

TERMINAL DATA: YAZAKI TERMINAL		YAZAKI CRIMP SPECIFICATION	
TERMINAL NAME: TERMINAL			
WIRE STRIP LENGTH 5.00-5.50 mm [.197-.217 IN]		 INSULATION DIAMETER RANGE Ø3.90-3.98 mm [.154-.157 IN]	
TERMINAL APPLICATION SPECIFICATION 		YAZAKI Rev - - -	
YAZAKI 7114-4032		- -	
TERMINALS APPLIED			
TE TERMINAL	YAZAKI TERMINAL	TE TERMINAL	YAZAKI TERMINAL
286608-1	7116-4032	1949060-1	7114-4032

WIRE SIZE		CRIMP HEIGHT mm [INCH]		CRIMP HEIGHT REFERENCE SETTING
3.00mm2		2.00+/-0.05 [.079+/-0.002]		7.1
2.00mm2		1.80+/-0.05 [.071+/-0.002]		9.2



- 1 RECOMMENDED SPARE PARTS
- 2 REFER TO SUPPLIED INSTRUCTION SHEET FOR CLEANING, LUBRICATION AND STORAGE OF APPLICATOR.
- 3 APPLY PART NUMBER 2-23419-6 LOCTITE TO THREADS OF ITEM 242.
- 4 CRIMP HEIGHT REFERENCE SETTING WAS THE SETTING USED WHEN THE APPLICATOR WAS QUALIFIED AT THE FACTORY. ADJUSTMENT MAY BE NECESSARY WHEN RUNNING APPLICATOR IN THE FIELD.
5. UNLESS SPECIFIED OTHERWISE TORQUE VALUES SHALL BE USED PER DOCUMENT, 101-35000.

*WARNING
ON INSTALLATION, SET WIRE DISC TO CRIMP HEIGHT REFERENCE SETTING FOR LARGEST WIRE SIZE. CRIMP HEIGHT REFERENCE SETTINGS GREATER THAN THE VALUE SHOWN MAY CAUSE DAMAGE TO THE CRIMP TOOLING, REFER TO THE INSTRUCTION SHEET FOR PROPER SETUP AND ADJUSTMENTS.

PACIFIC VERSION
Shown on sheets 3 of 4 & 4 of 4
(Atlantic version shown on sheets 1 of 4 & 2 of 4)

2		1						
LOC	DIST	REVISIONS						
A	66	DESCRIPTION				DATE	DWN	APVD
		P	LTR					
			-	SEE SHEET 1		-	-	-

-	1	1	2119082-7	CAM, SNAIL, INSULATION ADJUSTMENT	244
-	1	1	2079764-1	WASHER, WAVE SPRING, CREST-TO-CREST	243
8	-	1	2119083-1	RETAINER, INSULATION DIAL	242
-	1	1	7-18023-7	SCR, SKT HD CAP M3 X 4.0	241
-	-	1	2119580-1	MECHANICAL FEED ASSEMBLY	239
-	1	-	2844940-1	AIR FEED MODULE	238
-	REF	REF	994970-2	COUNTER, MAGNETIC	164
-	1	-	2119641-2	FEED CAM, AIR FEED	151
-	1	1	2168083-8	SCR, SKT HD CAP, RoHS, M4 X 16	144
-	4	4	2168083-9	SCR, SKT HD CAP, RoHS, M4 X 20	143
-	-	1	2119653-2	FEED CAM, POST FEED	142
-	1	1	1-1803583-0	APPLICATOR BASIC ASSEMBLY, SF	141
-	1	1	1803516-1	RAM ASSEMBLY, SF PACIFIC	140
-	1	1	1-18028-2	WASHER, FLAT, REG M4	119
-	1	1	2844908-1	SCREW, LOCKING	99
-	1	1	2844907-1	POST, LOCKING	98
-	1	1	455888-4	SPACER, CRIMPER	82
-	1	1	1803607-3	DOCUMENTATION PACKAGE	71
-	1	1	2119740-1	TAG, IDENTIFICATION	67
-	2	2	2168078-1	SCREW, DRIVE, RH, RoHS, 2 x .188	66
-	1	1	5-18022-5	SCR, HEX HD CAP, M4 X 6.0	59
-	1	1	1338685-1	PAWL, FEED	56
-	2	2	1-2168083-0	SCR, SKT HD CAP, RoHS, M4 X 10	53
-	1	1	1803382-6	HOLD DOWN, SPRING LOADED	50
-	1	2	18023-9	SCR, SKT HD CAP M4 X 6.0	49
-	-	1	2119652-1	FEED CAM, PRE FEED	48
-	1	1	1803602-1	SCR, BHSC, RoHS (M8 X 25)	41
-	1	1	1752356-1	SUPPORT, TERMINAL	34
-	2	2	2079383-5	SCR, BHSC, RoHS (M4 X 20)	33
-	2	2	3-2844962-0	SPACER, CYLINDRICAL, STRIP GUIDE	30
-	1	1	2844992-1	ASSEMBLY, STRIP GUIDE	29
-	1	1	1-455888-0	SPACER, CRIMPER	28
-	1	1	1320928-6	STRIP GUIDE	24
-	1	1	2168083-2	SCR, SKT HD CAP, RoHS, M4 X 8.0	21
-	1	1	1-18028-2	WASHER, FLAT, REG M4	20
-	1	1	2119533-1	STRIPPER, SIDE FEED	19
1	-	1	2119806-1	INSERT, SHEAR	13
-	1	1	3-22280-3	SPRING, COMPRESSION	12
-	1	1	1-356885-4	STOP, SHEAR	11
-	1	1	2119805-1	SHEAR HOLDER, FRONT	10
1	-	1	462006-6	FLOATING SHEAR, FRONT	9
1	1	1	3-1633932-0	ANVIL, COMBINATION	8
-	-	-	-	-	7
-	-	-	-	-	6
-	1	1	1-2119757-0	DEPRESSOR, SHEAR	5
-	1	1	238011-4	BLOCK, CRIMPER SPACER	4
1	1	1	7-1633961-1	CRIMPER, INSULATION F PREMIUM	3
-	1	1	455888-4	SPACER, CRIMPER	2
1	1	1	2-1633305-6	CRIMPER, WIRE PREMIUM	1

1

1

1

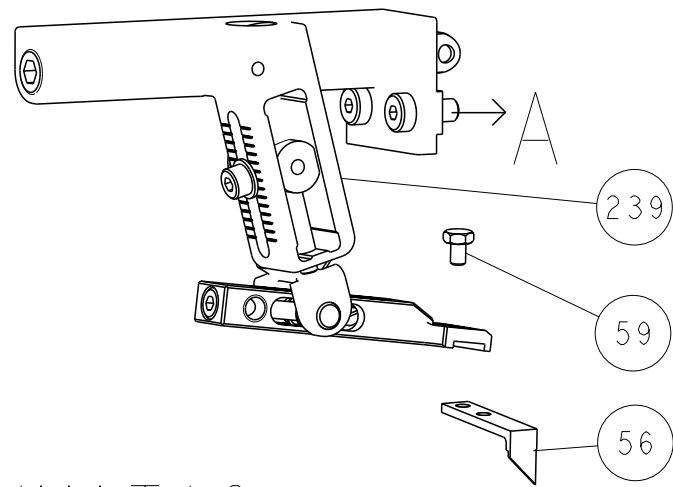
1

1

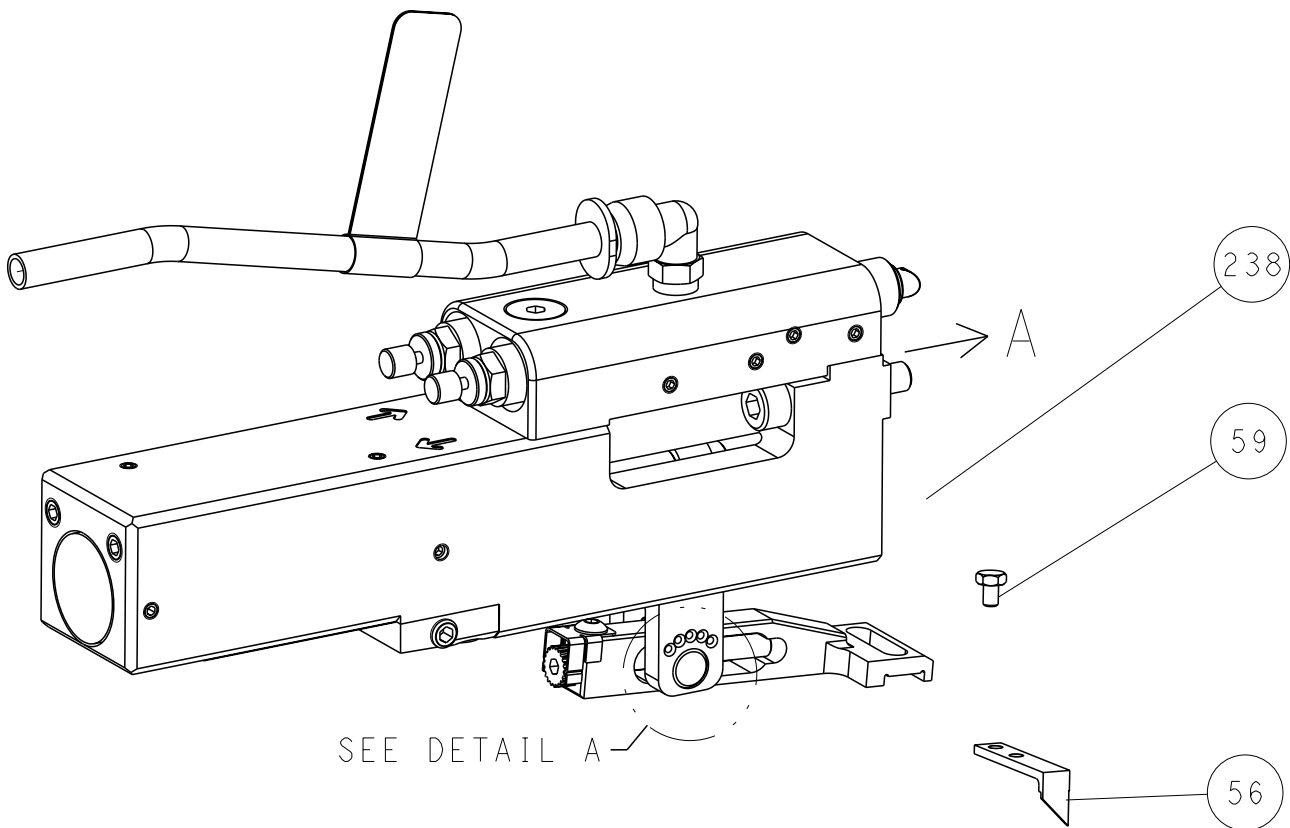
THIS DRAWING IS A CONTROLLED DOCUMENT FOR THE ELECTRONIC INDUSTRY. IT IS SUBJECT TO CHANGE AND TO THE EXTENT OF THE INDUSTRY'S OBLIGATION TO BE CONTACTED FOR THE LATEST REVISION.		DWN C. CHEN 31MAY2013	TE Connectivity Harrisburg, PA 17105-3608	
DIMENSIONS: mm		CHK U. GUO 31MAY2013	NAME Ocean Side Feed Applicator	
TOLERANCES UNLESS OTHERWISE SPECIFIED: 0 PLC ± 1 PLC ± 2 PLC ± 3 PLC ± 4 PLC ± ANGLES ±		APVD J. CRUZ 31MAY2013	PRODUCT SPEC	
MATERIAL -		FINISH -	APPLICATION SPEC	
-		WEIGHT -	SIZE A1	
-		Customer Accessible Production Drawing	SCALE 1:2	
-		Customer Accessible Production Drawing	SHEET 3	
-		Customer Accessible Production Drawing	REV C	

SHEETS 1 & 2 ARE NOT REQUIRED FOR PACIFIC VERSION

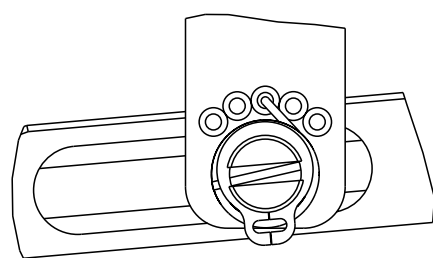
FEED TYPE MECHANICAL



PNEUMATIC

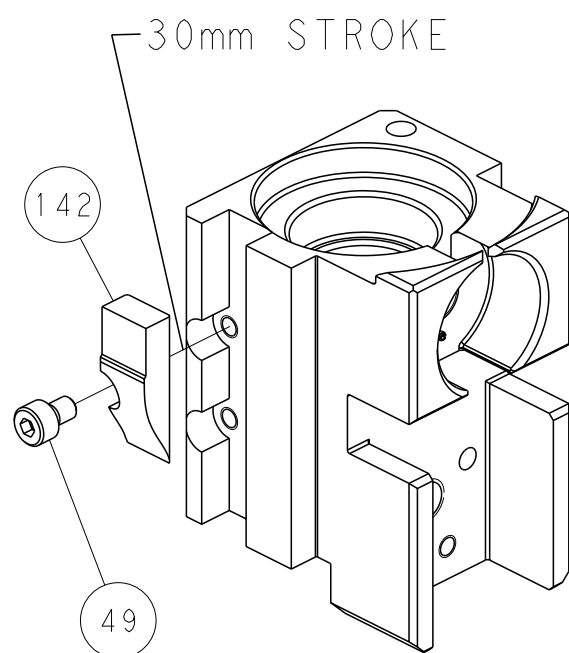


FEED SPRING SETTING POSITION (SHOWN FROM REAR SIDE)

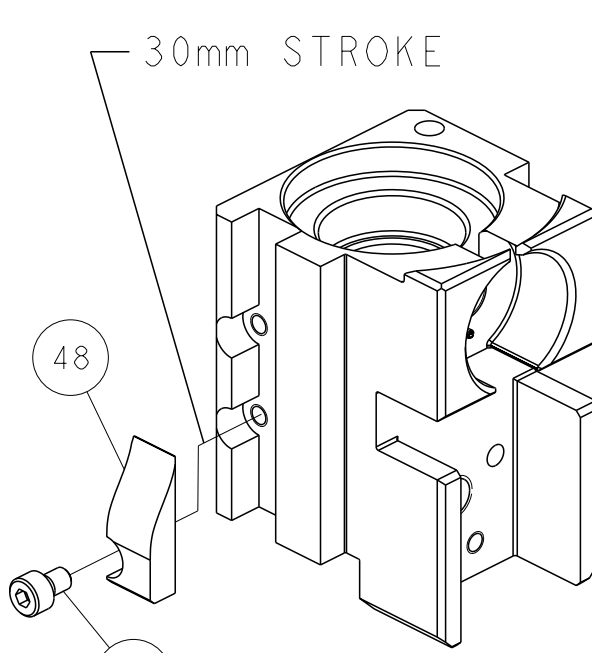


DETAIL A

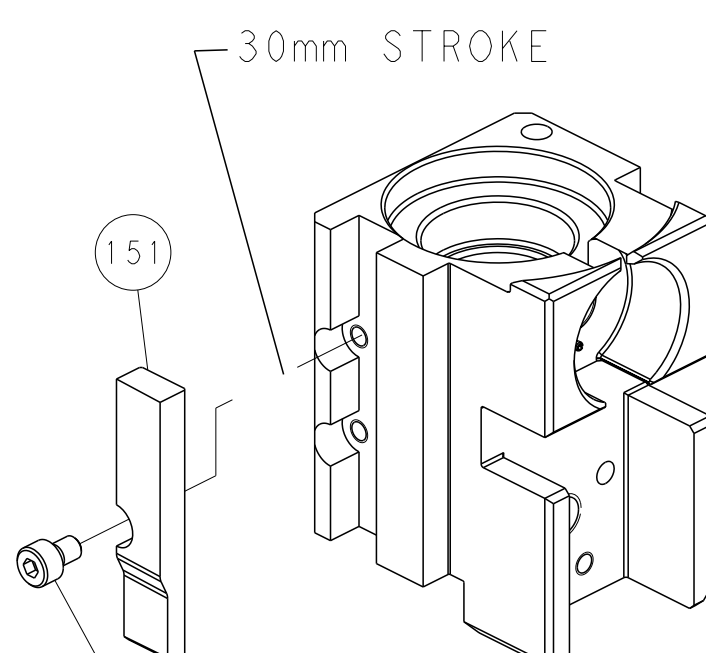
CAM POSITIONS



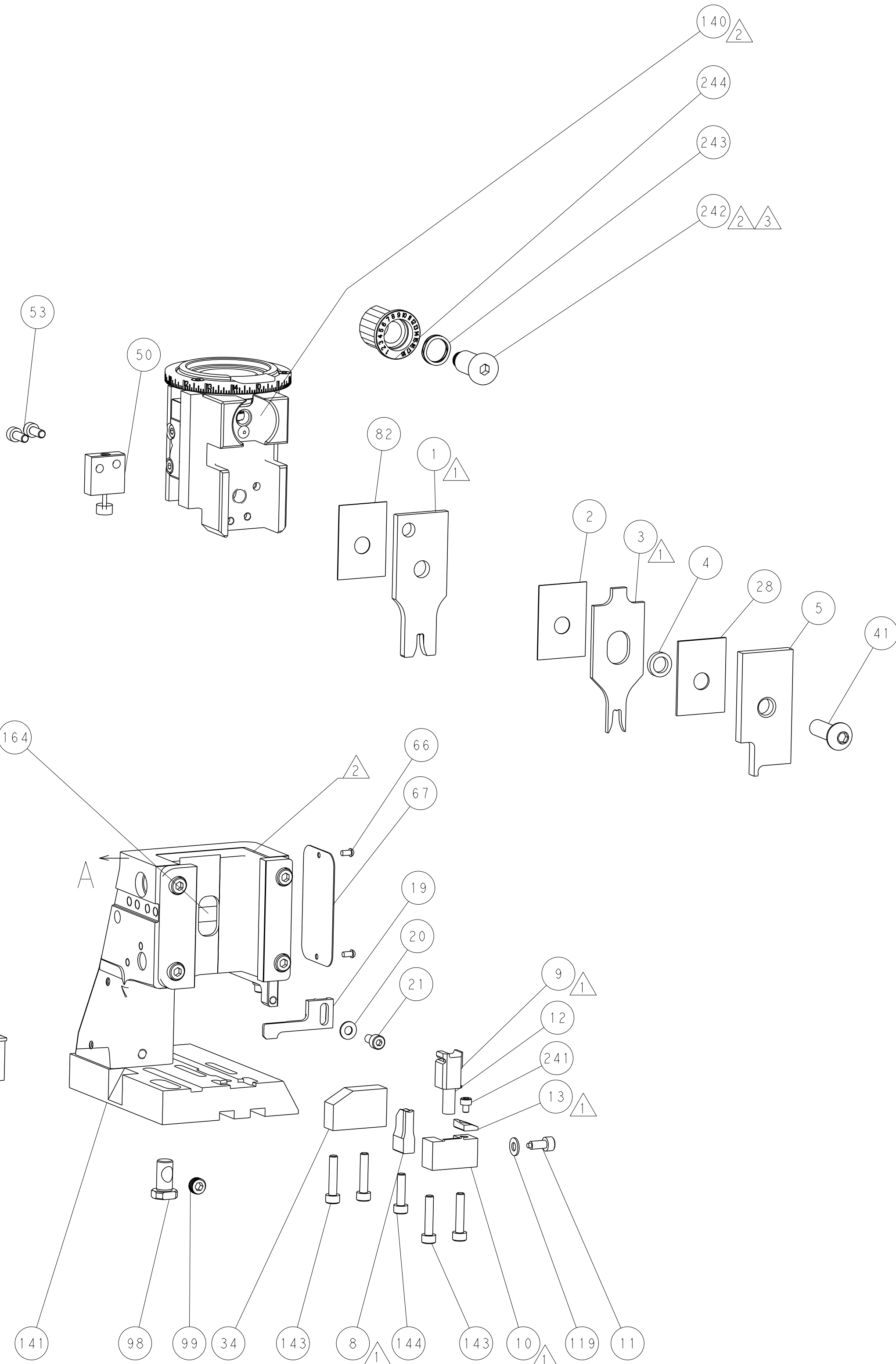
MECHANICAL
POST FEED



MECHANICAL
PRE FEED



AIR FEED



Mouser Electronics

Authorized Distributor

Click to View Pricing, Inventory, Delivery & Lifecycle Information:

[TE Connectivity:](#)

[2151959-1](#)