

REVISIONS

REV.	DESCRIPTION	DATE	APPROVED
A	INITIAL RELEASE NPR 7306	12-18-85	RG
B	REV'D P 1, 4 ECO 7343	1-27-86	RG
C	REV'D P1&2 ECO 7815	10-7-87	RG
D	REV'D P1 & P4 ECO 8358	90-2-9	Heaves
E	REV'D P1&2 ECO 8586	91-2-12	Heaves
F	REV'D P1 & P4 ECO 9441	950816	atb/ee

SALES DRAWING

REV. STATUS OF SHEETS

REV.	F	C	A	D	
SHEET	1	2	3	4	

Kilovac[®]
Corporation

P.O. BOX 4422
Santa Barbara, CA 93140-4422

TITLE

HIGH VOLTAGE VACUUM RELAY

PRED. BY JP 12-14-85

CHKD. BY RG 12-17-85

ENG. APRVL. RG 12-18-85

DWG. NO.

K81C SERIES

FSCM NO.

18741

SHEET

OF

1

4

ECR REC'D & APP'D

MFG'G ENGR SA DATE 950108

QA MGR RS DATE 1-6-95

REV.

C

SPECIFICATIONS:

CONTACT ARRANGEMENT..... SPDT
 FORM..... C
 TEST VOLTAGE (dc OR 60 Hz, kV PEAK)..... 11
 RATED OPERATING VOLTAGE (dc OR 60 Hz, kV PEAK)..... 10
 CONTINUOUS CURRENT CARRY, CONTACTS CLOSED, MAX.
 (Adc OR 60 Hz, RMS)
 P/N K81C235, K81C335, K81C535 (FIG. 1)..... 5
 P/N K81C245, K81C345, K81C545 (FIG. 2)..... 10
 CONTACT RESISTANCE, MAX. (OHMS)..... 0.050
 OPERATE TIME, MAX. (ms)..... 10
 RELEASE TIME, MAX. (ms)..... 10
 SHOCK, 11 ms 1/2 SINE (PEAK G's)..... 30
 VIBRATION, 10 G's PEAK (Hz)..... 55-500
 OPERATING TEMPERATURE RANGE (°C)..... -55 TO +85
 MECHANICAL LIFE (OPERATIONS X 10⁶)..... 2
 WEIGHT, MAXIMUM (oz)..... 2.5

RELAY PART NUMBER Outline Per FIG. 1 —> Outline Per FIG. 2 —>	K81C235 K81C245	K81C335 K81C345	K81C535 K81C545	
COIL VOLTAGE, NOMINAL	12	26.5	115	
PICK-UP VOLTAGE, MAX. (Vdc)	8	16	80	
DROP-OUT VOLTAGE (Vdc)	.5-5	1-10	5-50	
COIL RESISTANCE (OHMS $\pm 10\%$)	70	290	4700	

NOTES: RATINGS LISTED ARE FOR 25°C SEA LEVEL CONDITIONS.

DIMENSIONS IN INCHES
 (DIMENSIONS IN PARENTHESES ARE IN
 MILLIMETERS)

TOLERANCES EXCEPT AS NOTED

.xx = $\pm .03$

.xxx = $\pm .010$

\angle x° = $\pm 2^\circ$

DO NOT SCALE DWG.

Kilovac
 Corporation

P.O. BOX 4422
 Santa Barbara, CA 93140-4422

K81C SERIES

FSCM NO.

18741

SCALE

NONE

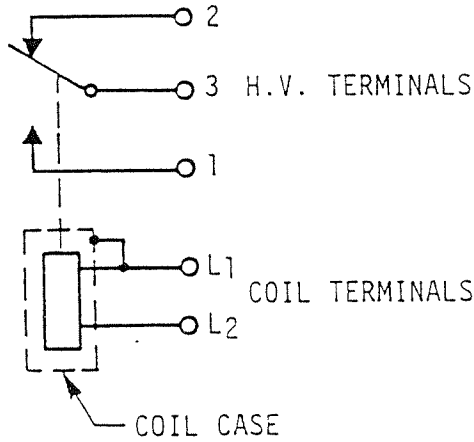
SHEET

2

ECR REC'D & APP'D

MFG'G ENGR SA DATE 950108

QA MGR RS DATE 1-6-95



SCHEMATIC

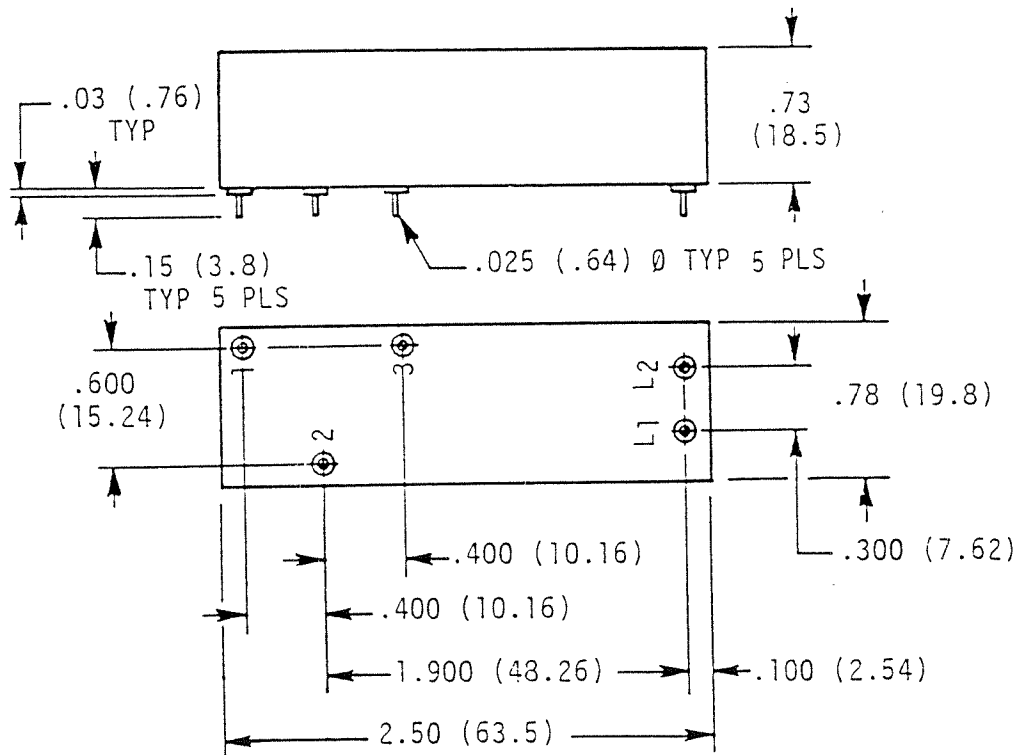


FIGURE 1. OUTLINE FOR PART NUMBERS K81C235, K81C335, K81C535

DIMENSIONS IN INCHES
(DIMENSIONS IN PARENTHESES ARE IN
MILLIMETERS)

TOLERANCES EXCEPT AS NOTED

.xx = ± .03

.xxx = ± .010

✕ x° = ± 2°

DO NOT SCALE DWG.

Kilovac
Corporation

P.O. BOX 4422
Santa Barbara, CA 93140-4422

K81C SERIES

FSCM NO.

18741

SCALE

FULL

SHEET

3

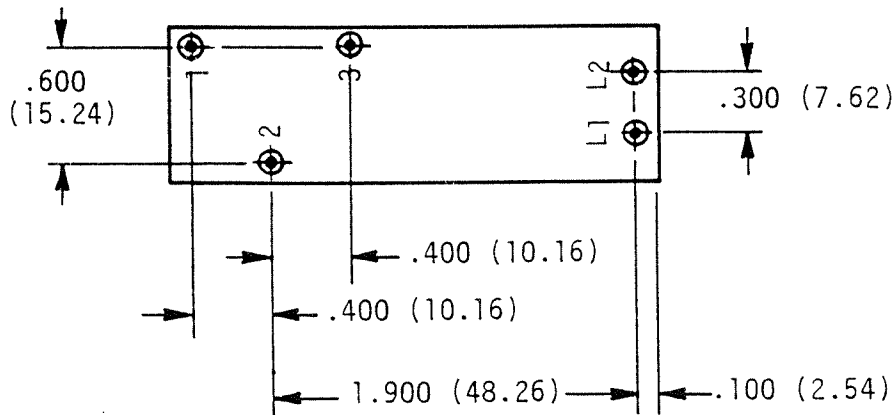
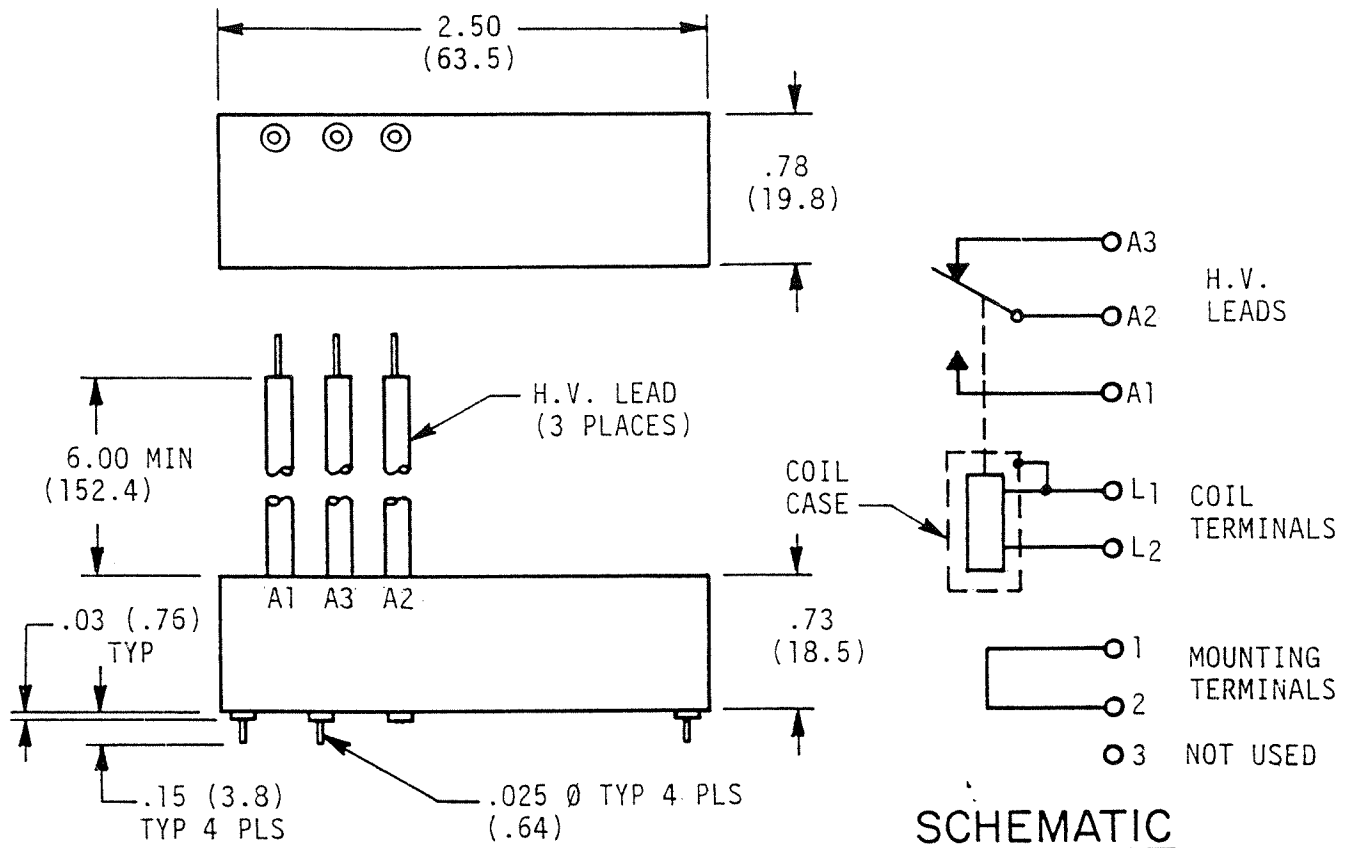


FIG. 2 OUTLINE FOR PART NUMBERS K81C245, K81C345, K81C545

DIMENSIONS IN INCHES
(DIMENSIONS IN PARENTHESES ARE IN
MILLIMETERS)

TOLERANCES EXCEPT AS NOTED

.xx = $\pm .03$

.xxx = $\pm .010$

\angle x° = $\pm 2^\circ$

DO NOT SCALE DWG.

Kilovac
Corporation

P.O. BOX 4422
Santa Barbara, CA 93140-4422

K81C SERIES

FSCM NO.

18741

SCALE

FULL

SHEET

4

Mouser Electronics

Authorized Distributor

Click to View Pricing, Inventory, Delivery & Lifecycle Information:

[TE Connectivity:](#)

[K81C-03](#) [K81C-01](#) [K81C-02](#) [K81C-10](#) [K81C-07](#)