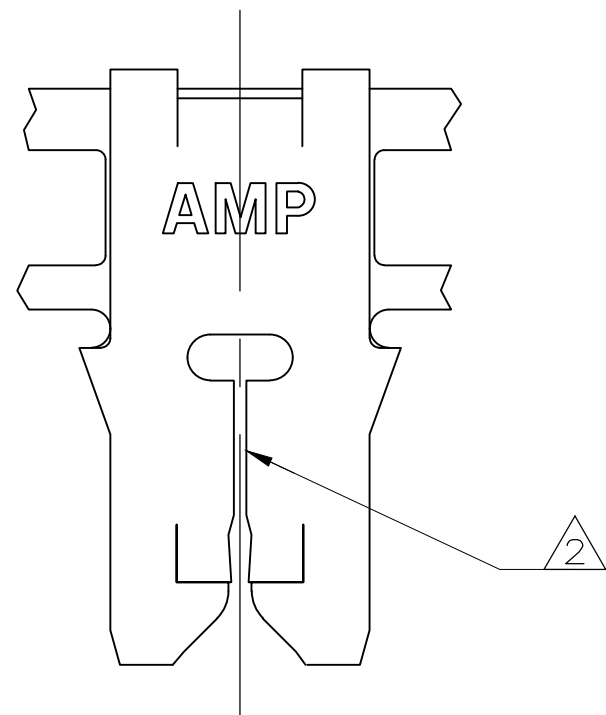
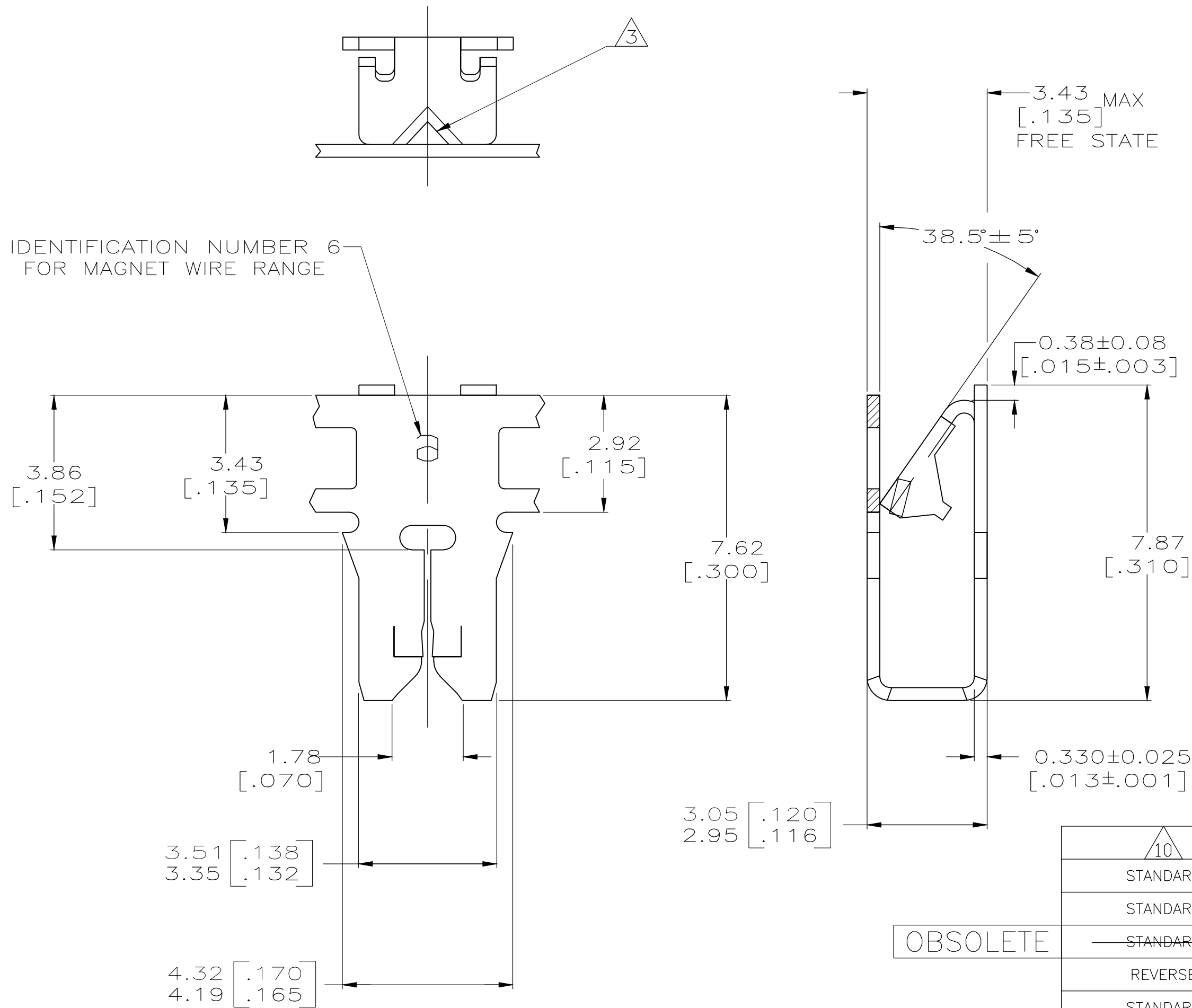


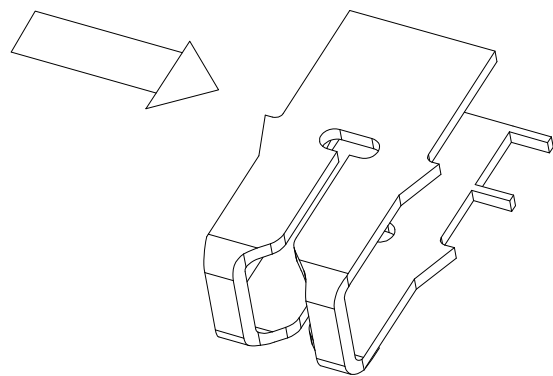
REVISIONS					
P	LTR	DESCRIPTION	DATE	DWN	APVD
	AG13	REVISED PER ECR-18-007294	21MAR2019	BDA	SV

- 1 CONTINUOUS STRIP ON REELS WITH TERMINALS LOCATED ON  $5.59\pm0.08$   $[\.220\pm.003]$  CENTERS.
- 2 SLOT TERMINATES EITHER A SINGLE OR DOUBLE MAGNET WIRE OF THE SAME SIZE AND TYPE. COPPER RANGE:  $0.25-0.36\text{mm}$   $[\#30-\#27]$  AWG. ALUMINUM RANGE:  $0.32-0.45\text{mm}$   $[\#28-\#25]$  AWG. ALUMINUM WIRE RANGE IS APPLICABLE FOR POST TIN PLATED PART NUMBERS ONLY
- 3 POKE-IN ACCEPTS A  $0.5-0.9\text{mm}^2$   $[\#20-\#18]$  AWG SOLID OR FUSED STRANDED LEAD WIRE.
- 4 SPECIAL REEL QUANTITY - SPAIN PRODUCTION ONLY.
- 5 PRELIMINARY - NOT FOR PRODUCTION.
- 6 NOTE DELETED
- 7 PAPER SPLICED - RESTRICTED FOR BSH-GERMANY
- 8 RETURNABLE PLASTIC REELING FOR SUPPLY WITHIN BRAZIL ONLY
- 9 PAPER SPLICED



OBSOLETE

10	WITH PAPER	TIN PLATE	BRASS	91-62429-2
STANDARD	PLASTIC REEL W/ PAPER	TIN PLATE	BRASS	81-62429-0
STANDARD	WITH PAPER	TIN PLATE	BRASS	762429-9
STANDARD	WITH PAPER	TIN PLATE	PHOS BRONZE	562429-7
REVERSE	WITH PAPER	TIN PLATE	BRASS	62429-6
STANDARD	WITH PAPER 4	TIN PLATE	BRASS	62429-5 4
STANDARD	PLASTIC REEL W/PAPER	UNPLATED	BRASS	62429-4
STANDARD	WITHOUT PAPER	TIN PLATE	BRASS	62429-2
STANDARD	WITH PAPER	TIN PLATE	BRASS	62429-1
REELING DIRECTION	REELING	FINISH	MATERIAL	PART NUMBER



DIRECTION OFF TOP OF THE REEL 10

THIS DRAWING IS A CONTROLLED DOCUMENT.		DWN 03OCT1995 MICHAEL S. FEHER	TE Connectivity	
DIMENSIONS: INCHES		CHK 16OCT1995 RICHARD GRZYBOWSKI		
TOLERANCES UNLESS OTHERWISE SPECIFIED:		APVD 16OCT1995 NELSON E. NEFF	NAME	
0 PLC ± -		PRODUCT SPEC 108-2012	TERMINAL, POKE-IN, 300 SERIES MAG-MATE™	
1 PLC ± -		APPLICATION SPEC 114-2046	-	
2 PLC ± 0.25 [.010]		WEIGHT 0	SIZE A2	CAGE CODE 00779
3 PLC ± -		CUSTOMER DRAWING	DRAWING NO C-62429	RESTRICTED TO -
4 PLC ± -		SCALE 10:1	SHEET 1 OF 1	REV AG13
ANGLES ± -				
FINISH				
SEE TABLE				

# Mouser Electronics

Authorized Distributor

Click to View Pricing, Inventory, Delivery & Lifecycle Information:

[TE Connectivity:](#)

[62429-4](#)