

THIS DRAWING IS UNPUBLISHED.

RELEASED FOR PUBLICATION

© COPYRIGHT - BY TYCO ELECTRONICS CORPORATION. ALL RIGHTS RESERVED.

LOC

	DIST
--	------

REVISIONS

AF

50

	F
--	---

LTR

DESCRIPTION

DATE _____

DWN

APVD

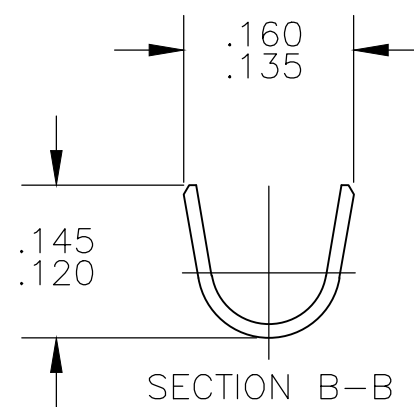
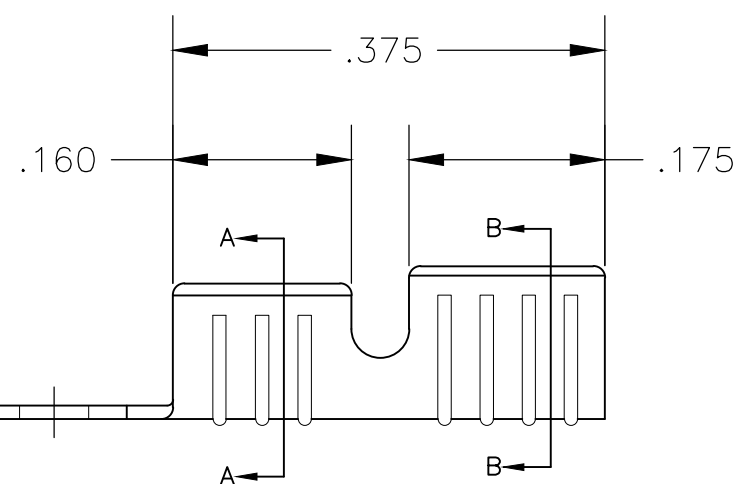
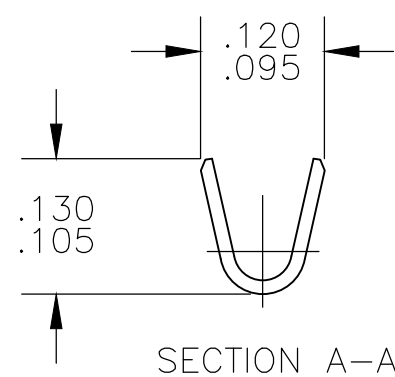
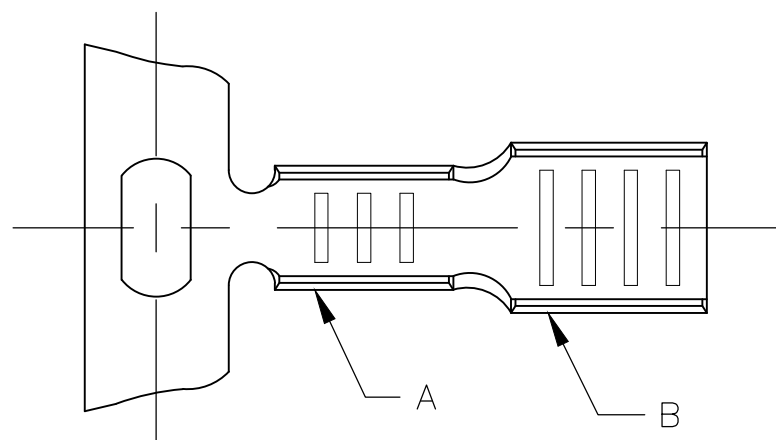
	H6
--	----





REVISÉD PER ECR-19-017995

	02DEC2019
--	-----------


PC

MK



- 1 PRODUCT PROVIDED IN STRIP FORM
REEL, BREAKS MAY BE PRESENT
-  2 REELING DIRECTION FOR THRU OR BUTT
TYPE SPLICE APPLICATOR
-  3 REELING DIRECTION FOR PIGTAIL TYPE
SPLICE APPLICATOR
-  4 WIRE RANGE BARREL A: 975–2700 CMA
INSULATION RANGE BARREL B: .080 – .115 DIA
- 5 REF. CRIMP INFO:
BARREL A – .080 "F"
BARREL B – .120 "O"
-  6 PRELIMINARY – NOT FOR PRODUCTION.

2	OBSOLETE	18 - 16	.100 DIA	.012 ST STEEL - NONE	61021-4
4	OBSOLETE	—	—	.012 STEEL - NICKEL	61021-3
2	OBSOLETE	18 - 16	.100 DIA	.012 BRASS - NONE	61021-2
2		18 - 16	.100 DIA	.012 STEEL - NICKEL	61021-1
		WIRE SIZE AWG BARREL "A"	WIRE SIZE HEATER WIRE BARREL "B"	MATERIAL AND FINISH	PART NO

THIS DRAWING IS A CONTROLLED DOCUMENT.		DWN RAGHAVENDRA CHK G.D.PORTA APVD G.D.PORTA PRODUCT SPEC — APPLICATION SPEC — WEIGHT —		21NOV2006		 TE Connectivity									
DIMENSIONS: INCHES		TOLERANCES UNLESS OTHERWISE SPECIFIED: 0 PLC ± — 1 PLC ± — 2 PLC ± — 3 PLC ± .015 4 PLC ± — ANGLES ± 1° 0'		NAME SPLICE				SIZE A3		CAGE CODE 00779		DRAWING NO C-61021		RESTRICTED TO —	
MATERIAL SEE TABLE		FINISH SEE TABLE		CUSTOMER DRAWING				SCALE 6:1		SHEET 1 OF 1		REV H6			

Mouser Electronics

Authorized Distributor

Click to View Pricing, Inventory, Delivery & Lifecycle Information:

[TE Connectivity:](#)

[61021-1 \(Loose Piece\)](#)