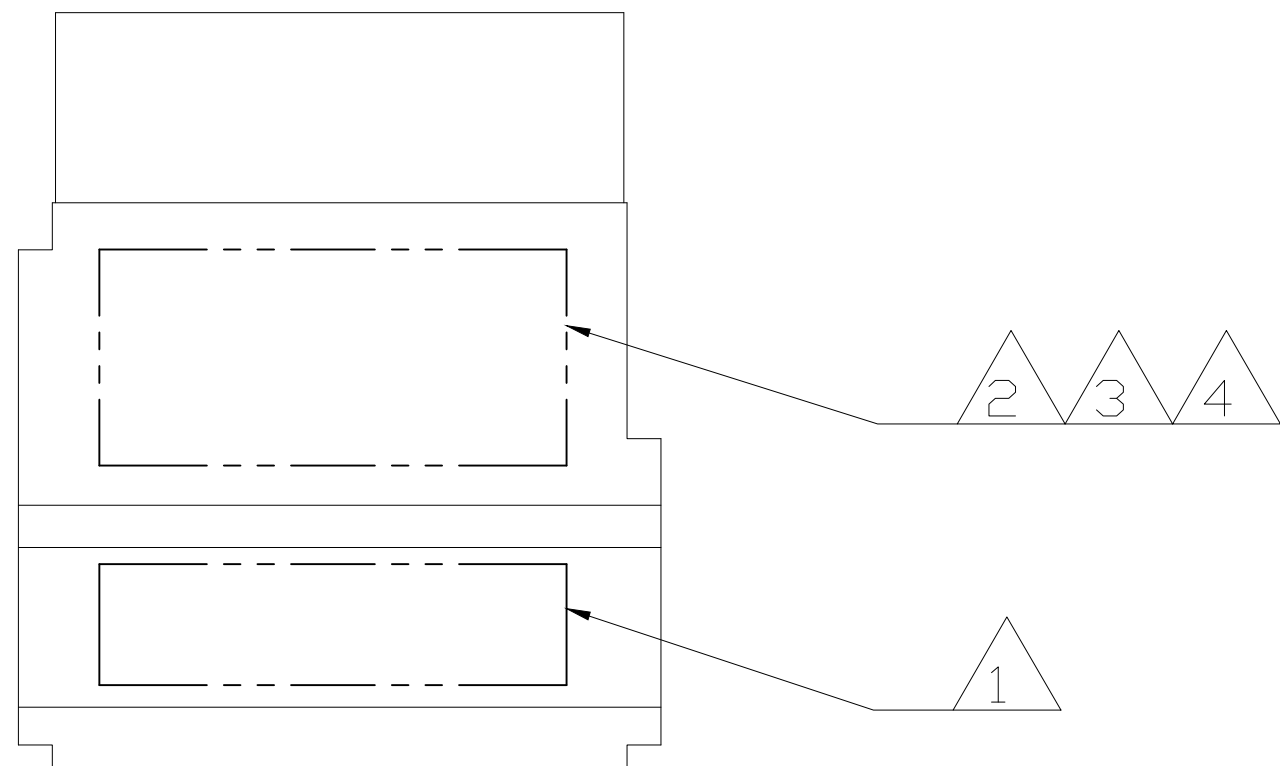
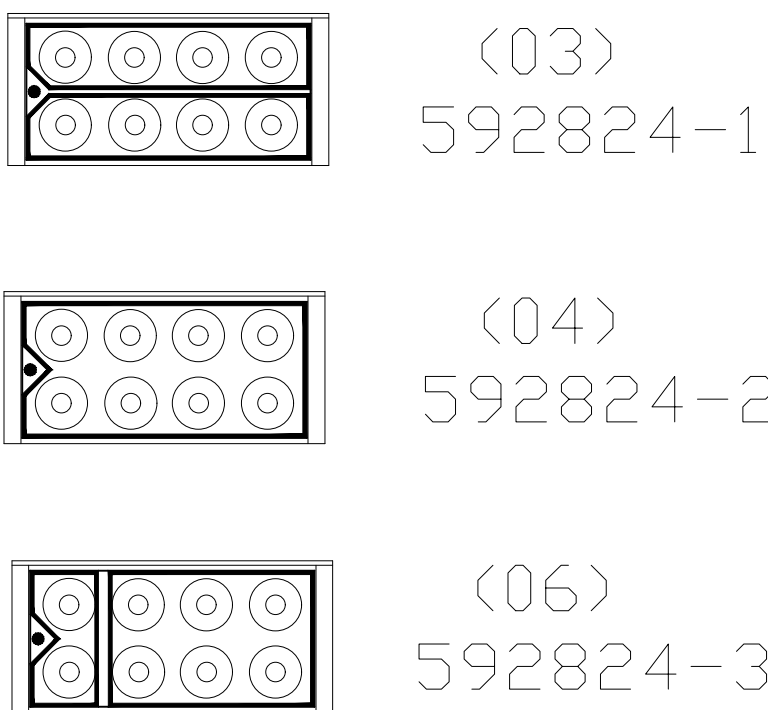






REVISIONS					
P	LTR	DESCRIPTION	DATE	DWN	APVD
	B	REV PER ECO 20-008730	6-23-20	CT	VR



# BUSSING ARRANGEMENTS

1. MARK MODULE IDENTIFICATION, "TE", TE PART NO. AND DATE CODE.
2. MARK MODULE ASSEMBLY 592824-1 WITH CUSTOMER PART NO. MRTB16E03-204.
3. MARK MODULE ASSEMBLY 592824-2 WITH CUSTOMER PART NO. MRTB16E04-204.
4. MARK MODULE ASSEMBLY 592824-3 WITH CUSTOMER PART NO. MRTB16E06-204.
5. ROLLS ROYCE QUALITY SPECIFICATION CQC-103 IS INVOKED FOR THIS PART NO.

	SIZE 16	592824-3
	SIZE 16	592824-2
	SIZE 16	592824-1
REMARKS	DESCRIPTION	PART NO

THIS DRAWING IS A CONTROLLED DOCUMENT.		DWN N. FRITZ 9-21-93 CHK R. RYAN 9-22-93 APVD R. RYAN 9-22-93		 TE Connectivity	
DIMENSIONS: INCHES		TOLERANCES UNLESS OTHERWISE SPECIFIED:		NAME MODULE FEED-BACK ASSEMBLY SIZE 16, TJ -	
		0 PLC ± - 1 PLC ± - 2 PLC ± - 3 PLC ± .005 4 PLC ± - ANGLES ± -		PRODUCT SPEC - APPLICATION SPEC -	
MATERIAL -		FINISH -		SIZE A2	
		WEIGHT 0.000000		CAGE CODE 00779	
		CUSTOMER DRAWING		DRAWING NO C-592824	
				RESTRICTED TO -	
				SCALE NTS	
				SHEET 1 of 1	
				REV B	

# Mouser Electronics

Authorized Distributor

Click to View Pricing, Inventory, Delivery & Lifecycle Information:

[TE Connectivity:](#)

[592824-1](#)