

4

3

2

1

THIS DRAWING IS UNPUBLISHED.

RELEASED FOR PUBLICATION

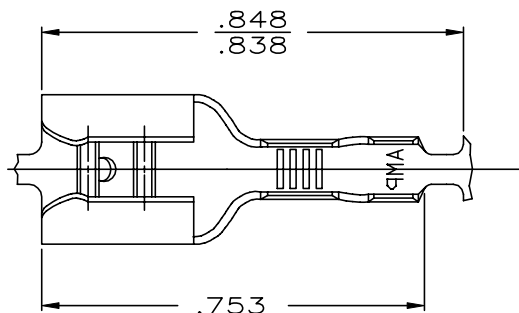
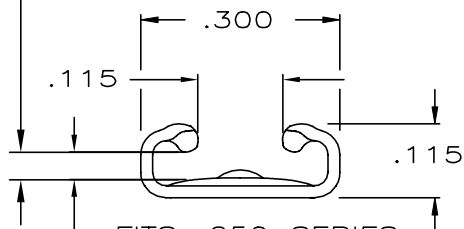
ALL RIGHTS RESERVED.

© COPYRIGHT - By -

LOC  
AFDIST  
50

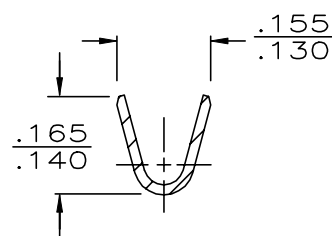
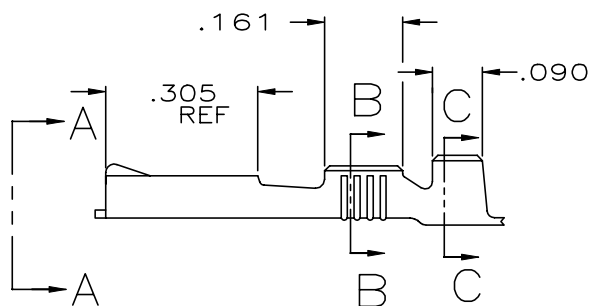
## REVISIONS

P	LTR	DESCRIPTION	DATE	DWN	APVD
	U	REVISED PER ECR-12-013445	09NOV12	KH	PD
	U1	REVISED PER ECR-20-009164	14JUL2020	MK	DH

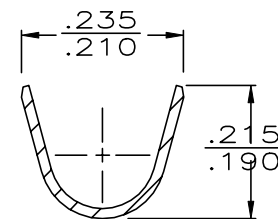
GAP AS REQUIRED TO MEET FORCE  
SPECIFICATIONS AND .028 MAXFITS .250 SERIES  
FASTON TAB

VIEW A-A

- 1 CONTINUOUS STRIP ON REELS.
- 2 MATING TAB THK IS .033-.030
- 3 WIRE SIZE IS #18-#14 AWG.
- 4 INSULATION RANGE IS .120-.170 DIA.  
±.001
- 5 PRELIMINARY - NOT FOR PRODUCTION
- 6 REDUCED PACKAGE QUANTITY



SECTION B-B



SECTION C-C

TIN	.016±.001 BRASS	6	542660-6
NICKEL	.016±.001 STEEL	5	42660-5
PRE-TIN	.016±.001 BRASS		42660-4
TIN	BRASS		42660-2
	BRASS		42660-1
FINISH	MATERIAL	PART NO	

THIS DRAWING IS A CONTROLLED DOCUMENT.		DWN JR RUTH 4/17/86	TE Connectivity	
DIMENSIONS: INCHES		CHK G YETTER 4/17/86		
TOLERANCES UNLESS OTHERWISE SPECIFIED:		APVD C MEYERS 4/17/86	NAME RECEPTACLE FASTON™ .250 SERIES	
0 PLC ± - 1 PLC ± - 2 PLC ± - 3 PLC ± .015 4 PLC ± - ANGLES ± -		PRODUCT SPEC — APPLICATION SPEC — WEIGHT —		
MATERIAL SEE ABOVE		FINISH SEE ABOVE	SIZE A3	CAGE CODE 00779
			DRAWING NO C=42660	RESTRICTED TO —
			CUSTOMER DRAWING	SCALE NTS
			SHEET 1 OF 1	REV U1

# Mouser Electronics

Authorized Distributor

Click to View Pricing, Inventory, Delivery & Lifecycle Information:

[TE Connectivity:](#)

[42660-2 \(CUT STRIP\)](#) [42660-2 \(MOUSER REEL\)](#)