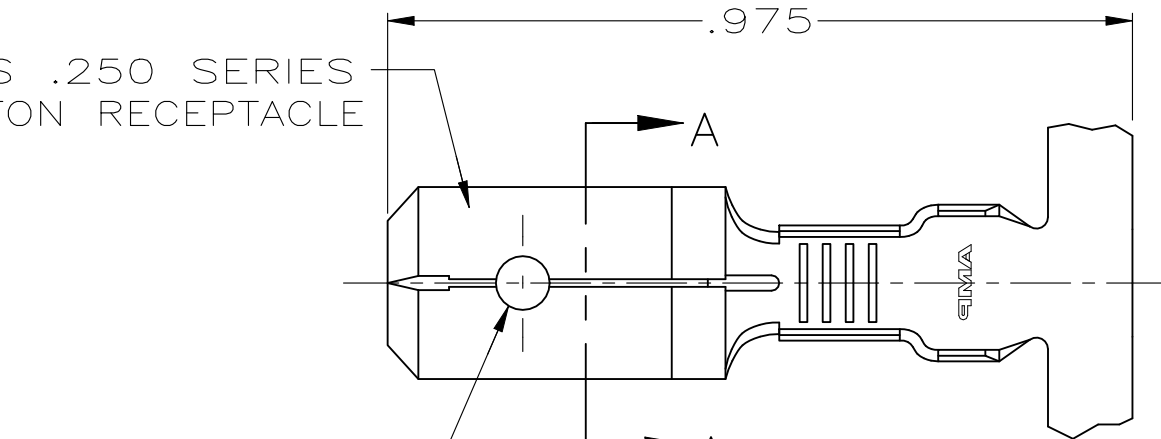
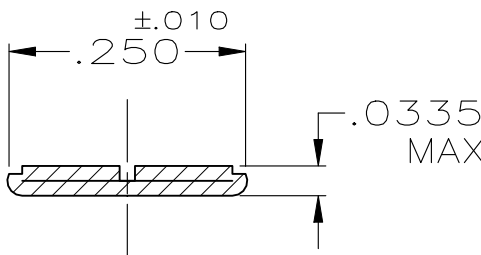
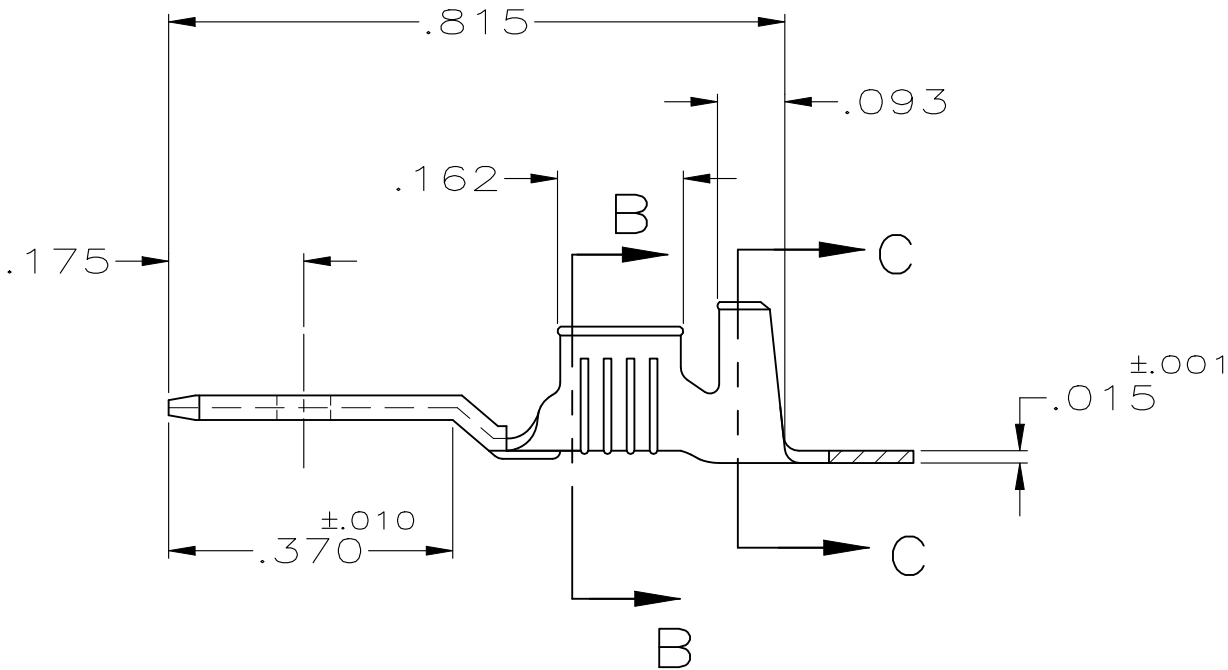


REVISIONS					
P	LTR	DESCRIPTION	DATE	DWN	APVD
	J2	REVISED PER ECR-20-101061	14JAN2021	BH	E.W

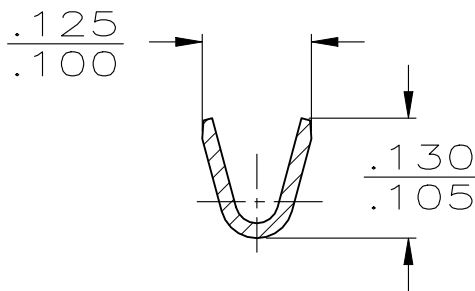
FITS .250 SERIES
FASTON RECEPTACLE



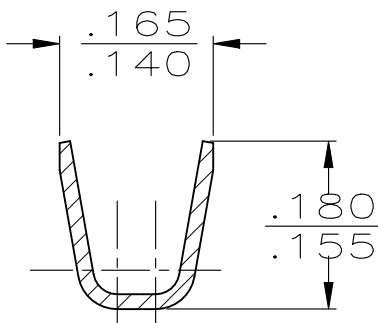
.075
.060 DIA HOLE



SECTION A-A
SCALE 5:1



SECTION B-B
SCALE 5:1



SECTION C-C
SCALE 5:1

- 1 CONTINUOUS STRIP ON REELS.
- 2 FEED TO BE .540±.005.
- 3 REVERSED REEL OF 42475-1.
- 4 REVERSED REEL OF 42475-2.
- 5 FOREIGN PRODUCTION ONLY.

4	PRE-TIN	.080-.120 DIA	22-18 AWG	42475-5
3	TIN			42475-4
5	-			42475-3
5	TIN			42475-2
5	-	INSULATION RANGE	WIRE SIZE	42475-1
	FINISH			PART NO

THIS DRAWING IS A CONTROLLED DOCUMENT.		DWN JR RUTH 1/31/91	TE Connectivity		
		CHK MS FEHER 1/31/91			
DIMENSIONS: INCHES	TOLERANCES UNLESS OTHERWISE SPECIFIED:	APVD C MEYERS 1/31/91	NAME TAB, FASTON, .250 SERIES		
		PRODUCT SPEC			
	0 PLC ± - 1 PLC ± - 2 PLC ± - 3 PLC ± .015 4 PLC ± - ANGLES ± -	APPLICATION SPEC	SIZE CAGE CODE DRAWING NO RESTRICTED TO		
		FINISH			
MATERIAL BRASS	SEE TABLE	WEIGHT 0.000000	A300779C-42475		
		CUSTOMER DRAWING	SCALE 4:1	SHEET 1 OF 1	REV J2

Mouser Electronics

Authorized Distributor

Click to View Pricing, Inventory, Delivery & Lifecycle Information:

[TE Connectivity:](#)

[42475-4 \(Cut Strip\)](#)