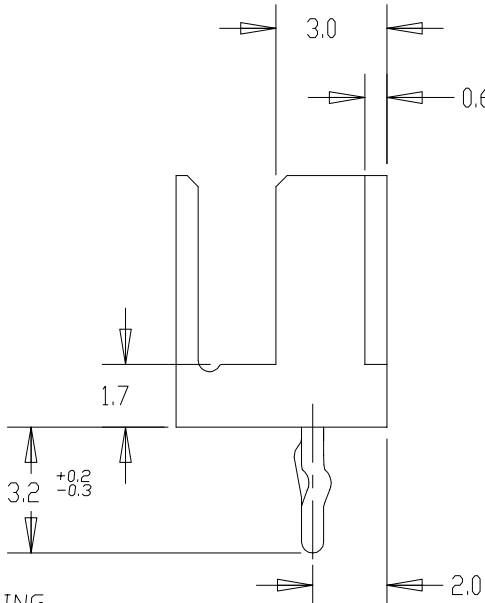
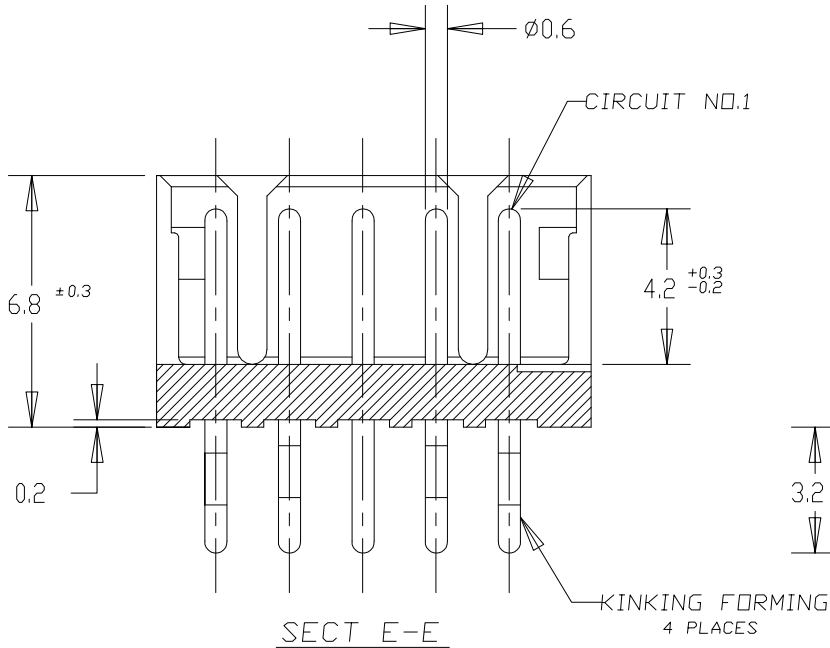
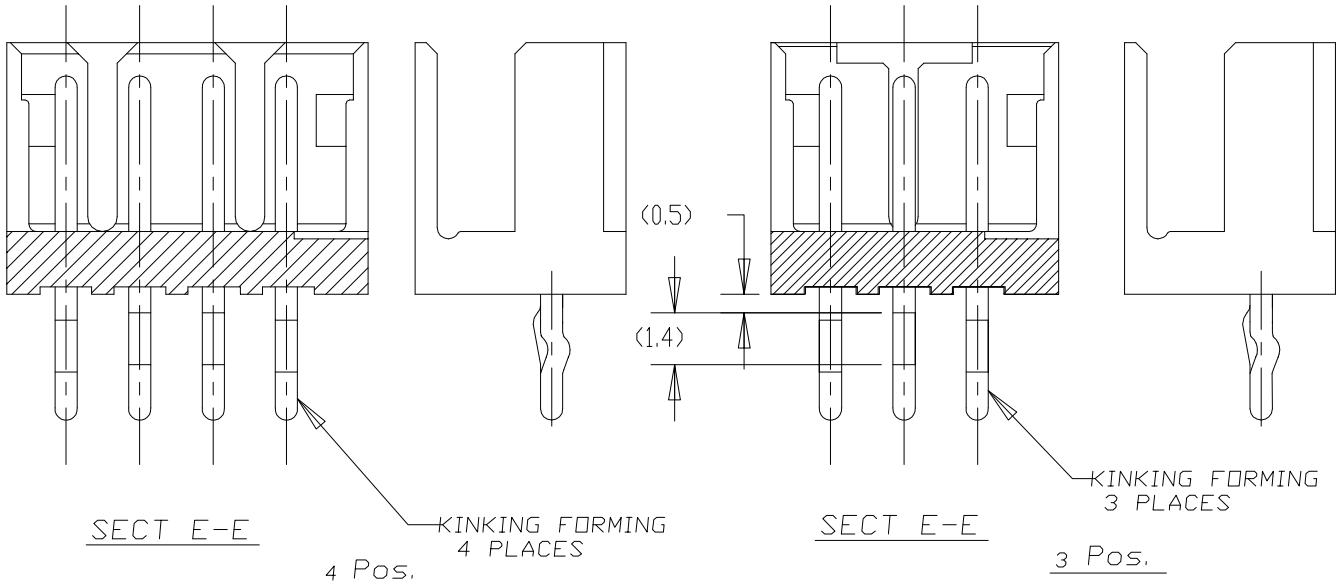
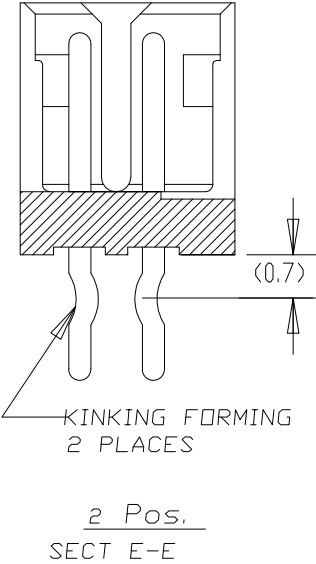
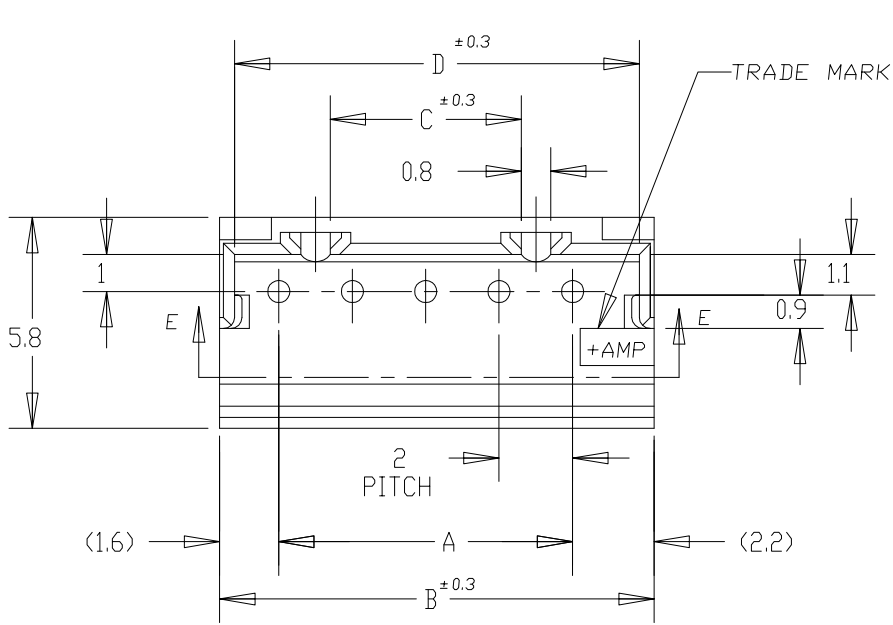
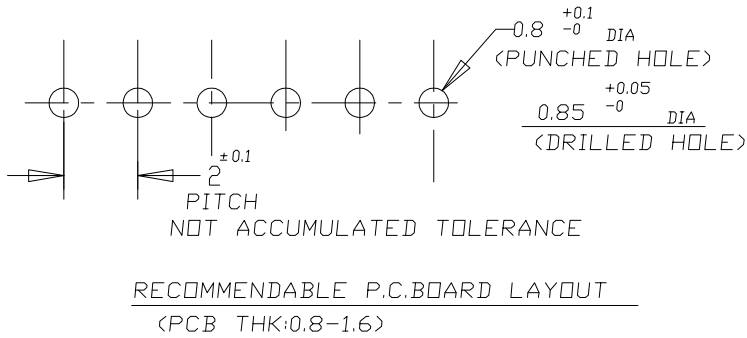


NOTES;
⚠ MATERIAL:HOUSING - 66 NYLON (UL94V-0)
POST - TIN BRASS
⚠ 7-292132-3 WAS OBSOLETED.



	7-292132-5	5-292132-5	3-292132-5	1-292132-5	15	28	31.8	25.2	31.0
	7- -4	5- -4	3- -4	1- -4	14	26	29.8	23.2	29.0
	7- ⚠ -3	5- -3	3- -3	1- -3	13	24	27.8	21.2	27.0
	7- -2	5- -2	3- -2	1- -2	12	22	25.8	19.2	25.0
	7- -1	5- -1	3- -1	1- -1	11	20	23.8	17.2	23.0
	7- -0	5- -0	3- -0	1- -0	10	18	21.8	15.2	21.0
	6- -9	4- -9	2- -9	-9	9	16	19.8	13.2	19.0
	6- -8	4- -8	2- -8	-8	8	14	17.8	11.2	17.0
	6- -7	4- -7	2- -7	-7	7	12	15.8	9.2	15.0
8-292132-6	6- -6	4- -6	2- -6	-6	6	10	13.8	7.2	13.0
	6- -5	4- -5	2- -5	-5	5	8	11.8	5.2	11.0
	6- -4	4- -4	2- -4	-4	4	6	9.8	3.2	9.0
	6- -3	4- -3	2- -3	-3	3	4	7.8	—	7.0
6-292132-2	4-292132-2	2-292132-2	292132-2	2	2	5.8	—	5.0	
RED	BLACK	YELLOW	BLUE	NATURAL	Pos.	A	B	C	D
PART NO.									



THIS DRAWING IS A CONTROLLED DOCUMENT FOR TYCO ELECTRONICS CORPORATION
IT IS SUBJECT TO CHANGE AND THE CONTROLLING ENGINEERING ORGANIZATION
SHOULD BE CONTACTED FOR THE LATEST REVISION

DIMENSIONS:
mm

TOLERANCES UNLESS OTHERWISE SPECIFIED:
±0.2

0-PLC ±
1-PLC ±
2-PLC ±
3-PLC ±
4-PLC ±
ANGLES ±
FINISH

MATERIAL

1

DWN
J.JIANG
23JAN03

CHK
S.YAO
23JAN03

APVD
T.SASAKI
23JAN03

PRODUCT SPEC
108-60016

APPLICATION SPEC

WEIGHT

CUSTOMER DRAWING

tyco
Electronics

Tyco Electronics Corporation
Shanghai, P.R.China,200233

NAME

POST HEADER ASS'Y (BOX-V DIP)
(AMP CT CONNECTOR 2mm PITCH)

SIZE
A3

CAGE CODE
00779

DRAWING NO
C-292132

RESTRICTED TO
-

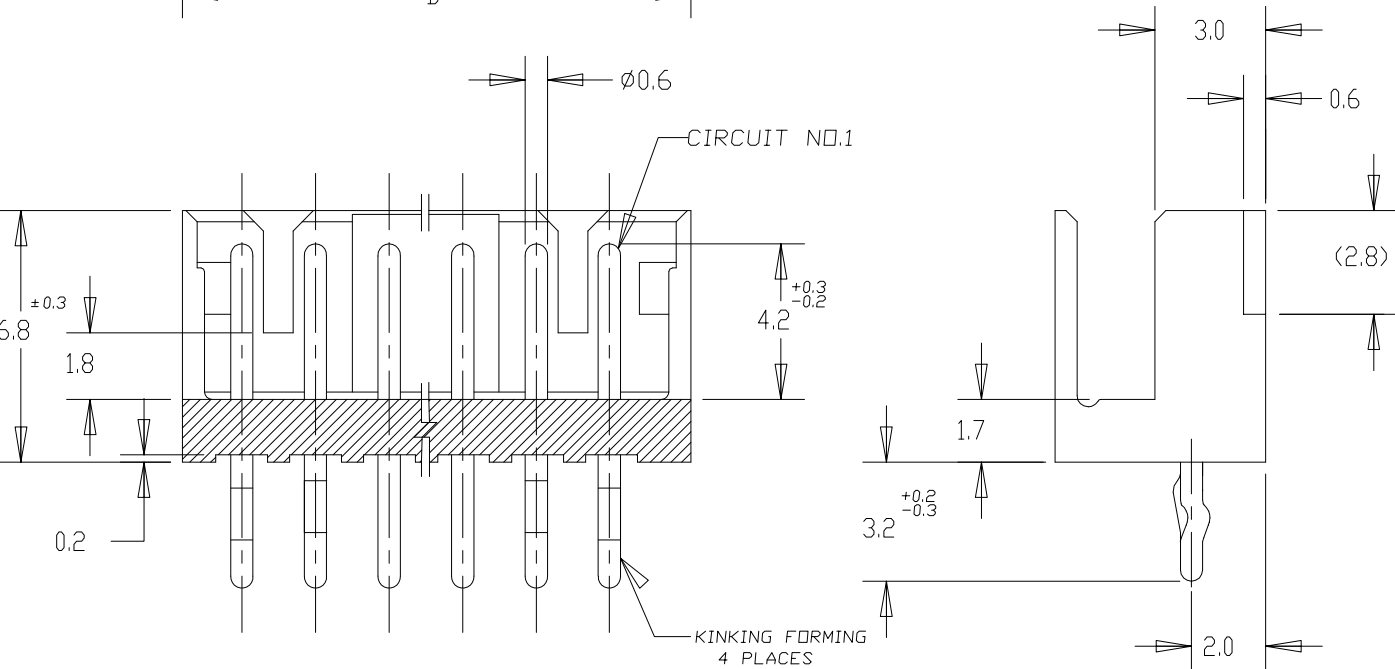
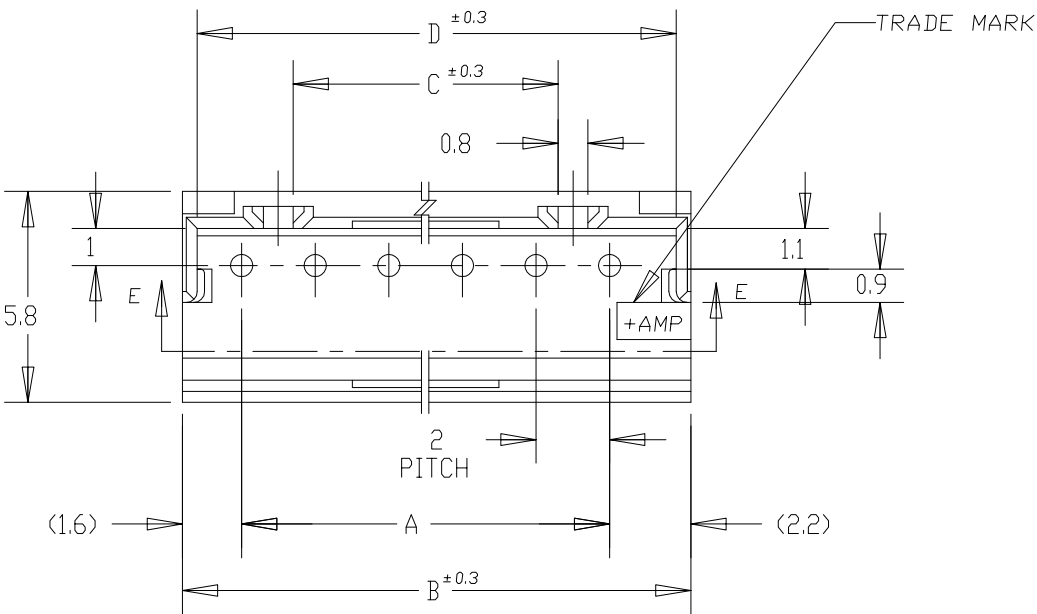
SCALE
5:1

SHEET
1 OF 2

REV
A2

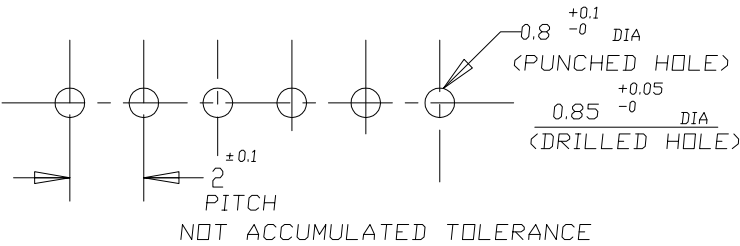
AMP 1470-19 REV 31MAR2000

2		1				
LOC	DIST	REVISIONS				
FB	00	P	LTR	DESCRIPTION	DATE	APVD
		-	-	SEE SHEET 1	-	-



SECT E-E

6~15 Pos.



RECOMMENDABLE P.C.BOARD LAYOUT
(PCB THK:0.8-1.6)

NOTES;

△ MATERIAL:HOUSING - 66 NYLON (UL94V-0)
POST - TIN BRASS

	7-292132-5	5-292132-5	3-292132-5	1-292132-5	15	28	31.8	25.2	31.0
	7-▲-4	5-▲-4	3-▲-4	1-▲-4	14	26	29.8	23.2	29.0
	7-▲-3	5-▲-3	3-▲-3	1-▲-3	13	24	27.8	21.2	27.0
	7-△-2	5-▲-2	3-▲-2	1-▲-2	12	22	25.8	19.2	25.0
	7-▲-1	5-▲-1	3-▲-1	1-▲-1	11	20	23.8	17.2	23.0
	7-▲-0	5-▲-0	3-▲-0	1-▲-0	10	18	21.8	15.2	21.0
	6-▲-9	4-▲-9	2-▲-9	▲-9	9	16	19.8	13.2	19.0
	6-▲-8	4-▲-8	2-▲-8	▲-8	8	14	17.8	11.2	17.0
	6-▲-7	4-▲-7	2-▲-7	▲-7	7	12	15.8	9.2	15.0
8-292132-6	6-▲-6	4-▲-6	2-▲-6	▲-6	6	10	13.8	7.2	13.0
	6-▲-5	4-▲-5	2-▲-5	▲-5	<SEE SHEET 1 OF 2>				
	6-▲-4	4-▲-4	2-▲-4	▲-4					
	6-▲-3	4-▲-3	2-▲-3	▲-3					
	6-292132-2	4-292132-2	2-292132-2	292132-2					
RED	BLACK	YELLOW	BLUE	NATURAL	Pos.	A	B	C	D
PART NO.									

THIS DRAWING IS A CONTROLLED DOCUMENT FOR TYCO ELECTRONICS CORPORATION
IT IS SUBJECT TO CHANGE AND THE CONTROLLING ENGINEERING ORGANIZATION
SHOULD BE CONTACTED FOR THE LATEST REVISION

DIMENSIONS:	TOLERANCES UNLESS OTHERWISE SPECIFIED:
mm	±0.2
	0-PLC ±
	1-PLC ±
	2-PLC ±
	3-PLC ±
	4-PLC ±
MATERIAL	FINISH
1	1

DWN	CHK	APVD	PRODUCT SPEC	APPLICATION SPEC	WEIGHT	CUSTOMER DRAWING
-----	-----	------	--------------	------------------	--------	------------------

tyco
Electronics

Tyco Electronics Corporation
Shanghai, P.R.China,200233

NAME

POST HEADER ASS'Y (BOX-V DIP)
(AMP CT CONNECTOR 2mm PITCH)

SIZE	CAGE CODE	DRAWING NO	RESTRICTED TO
A3	00779	G-292132	-
		SCALE 5:1	SHEET 2 OF 2
			REV A2

Mouser Electronics

Authorized Distributor

Click to View Pricing, Inventory, Delivery & Lifecycle Information:

[TE Connectivity:](#)

[6-292132-9](#)