

D

D

C

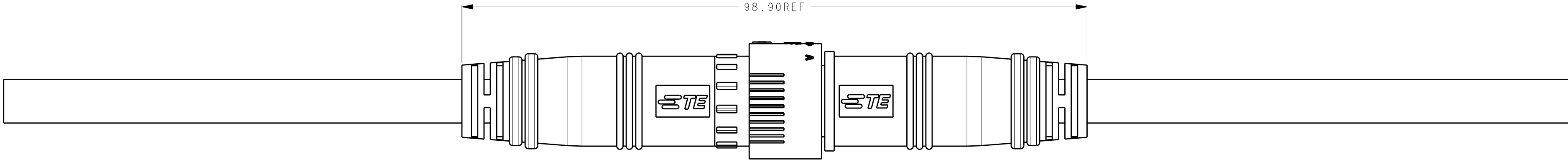
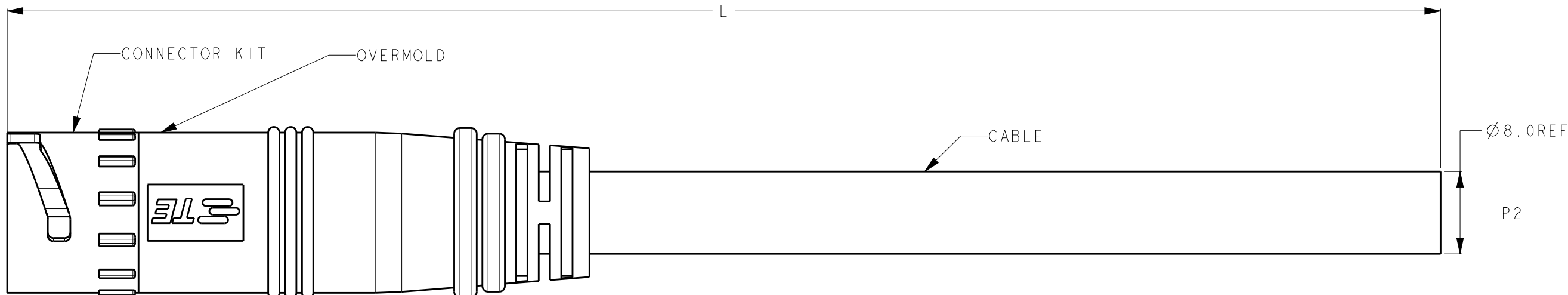
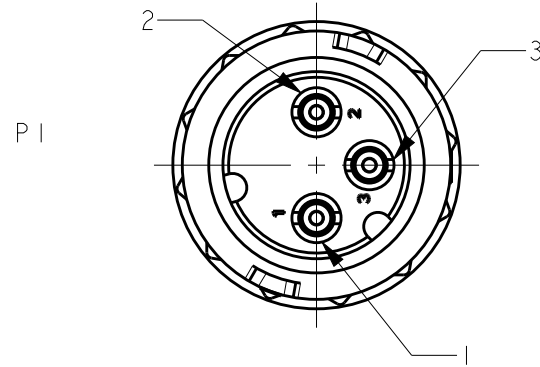
C

B

B

A

A



MATE WITH 2834002 SERIES

WIRING DIAGRAM		
P1	WIRE COLOR	P2
P1-1	RED	-
P1-2	BLACK	-
P1-3	BROWN	-

NOTES:
1.MATE WITH 2834002 SERIES.
2.RATINGS:
VOLTAGE:300V AC/DC
CURRENT:6A MAX.
TEMPERATURE:80°C

P/N	CABLE	DIM A	L (mm)
9-2834003-1	RUBBER (THERMOPLASTIC ELASTOMER TYPE)	Ø8.0	150±5
9-2834003-2			250±10
9-2834003-3			500±15
9-2834003-4			1000±15

OBSOLETE

THIS DRAWING IS A CONTROLLED DOCUMENT.

DIMENSIONS:
mm

MATERIAL
-

TOLERANCES UNLESS OTHERWISE SPECIFIED:

0 PLC	±-
1 PLC	±0.5
2 PLC	±0.5
3 PLC	±-
4 PLC	±-
ANGLES	±-
FINISH	±-

-

DWN
FRANK FAN
CHK
GEORGE FU
APVD
MING SHI

17MAY2019
17MAY2019
17MAY2019

PRODUCT SPEC
108-173041
APPLICATION SPEC
114-173041
WEIGHT
-

Customer Drawing

TE Connectivity

NAME
3P FEMALE CABLE ASSEMBLY
CIRCULAR LIGHTING SEALED CONN.
-

SIZE	CAGE CODE	DRAWING NO	RESTRICTED TO
A2	-	©-2834003	-

SCALE 1:2	SHEET 1	OF 2	REV C
--------------	------------	---------	----------

1471-9 (3/11)

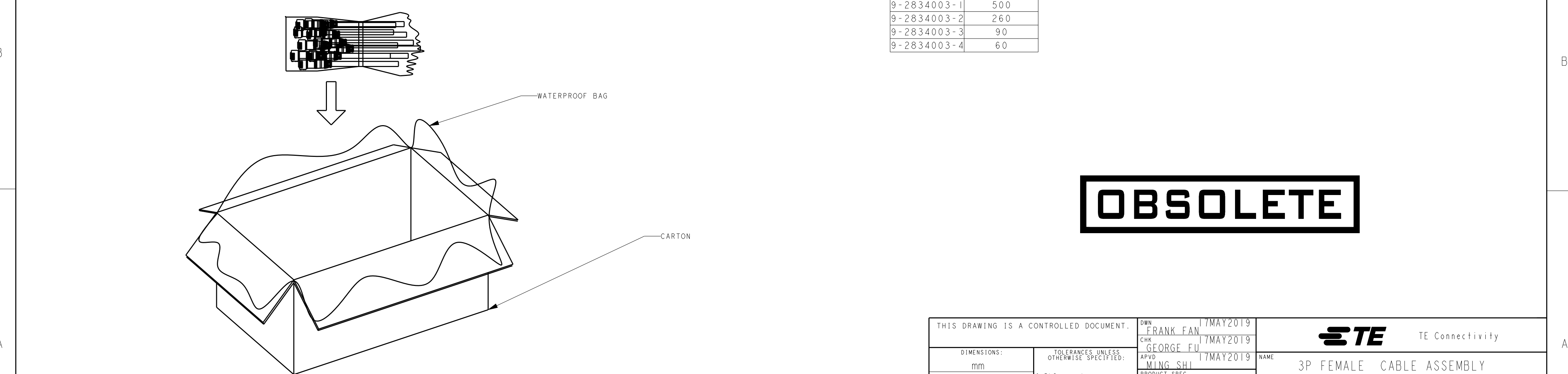
1. PUT PIECES OF PARTS INTO THE PLASTIC BAG, AND SEALED WITH RUBBER BAND AS 1 BUNCH.

3. SEAL THE CARTON.



2. PUT BUNCHES OF PARTS INTO CARTON.

4. PACKAGING QUANTITIES (REFER SHEET 1 FOR PN DEFINITION):



P / N	PARTS PER CARTON (PCS)
9-2834003-1	500
9-2834003-2	260
9-2834003-3	90
9-2834003-4	60

Mouser Electronics

Authorized Distributor

Click to View Pricing, Inventory, Delivery & Lifecycle Information:

[TE Connectivity:](#)

[9-2834003-1](#)