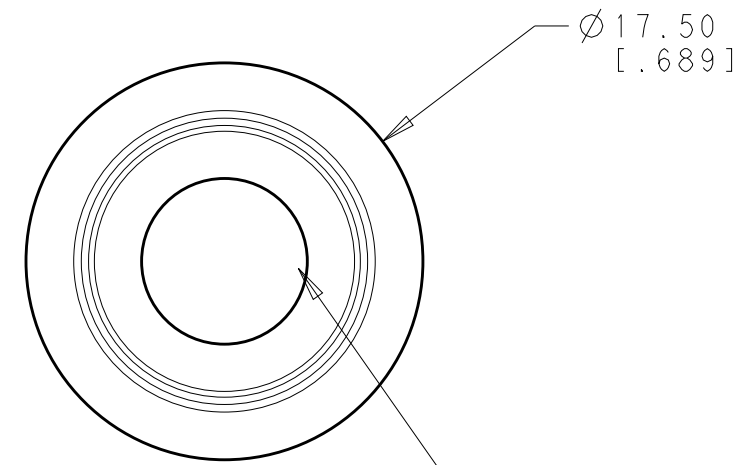
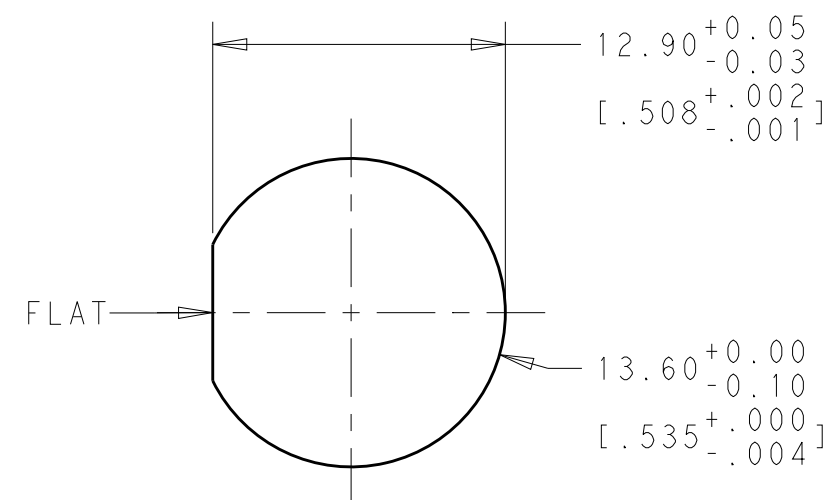
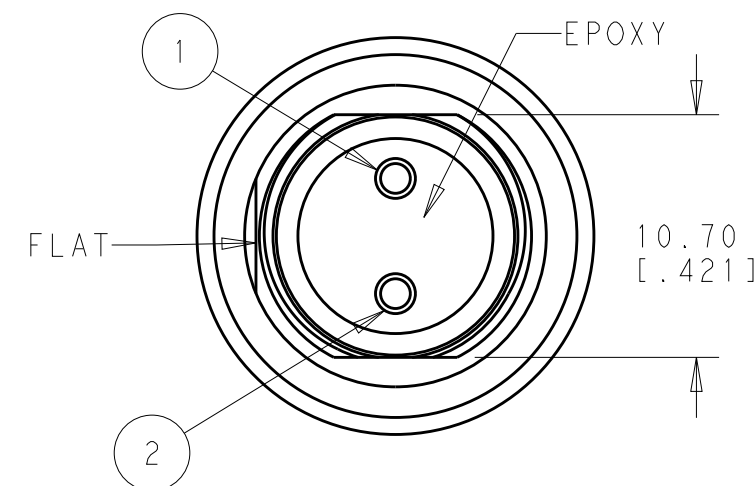
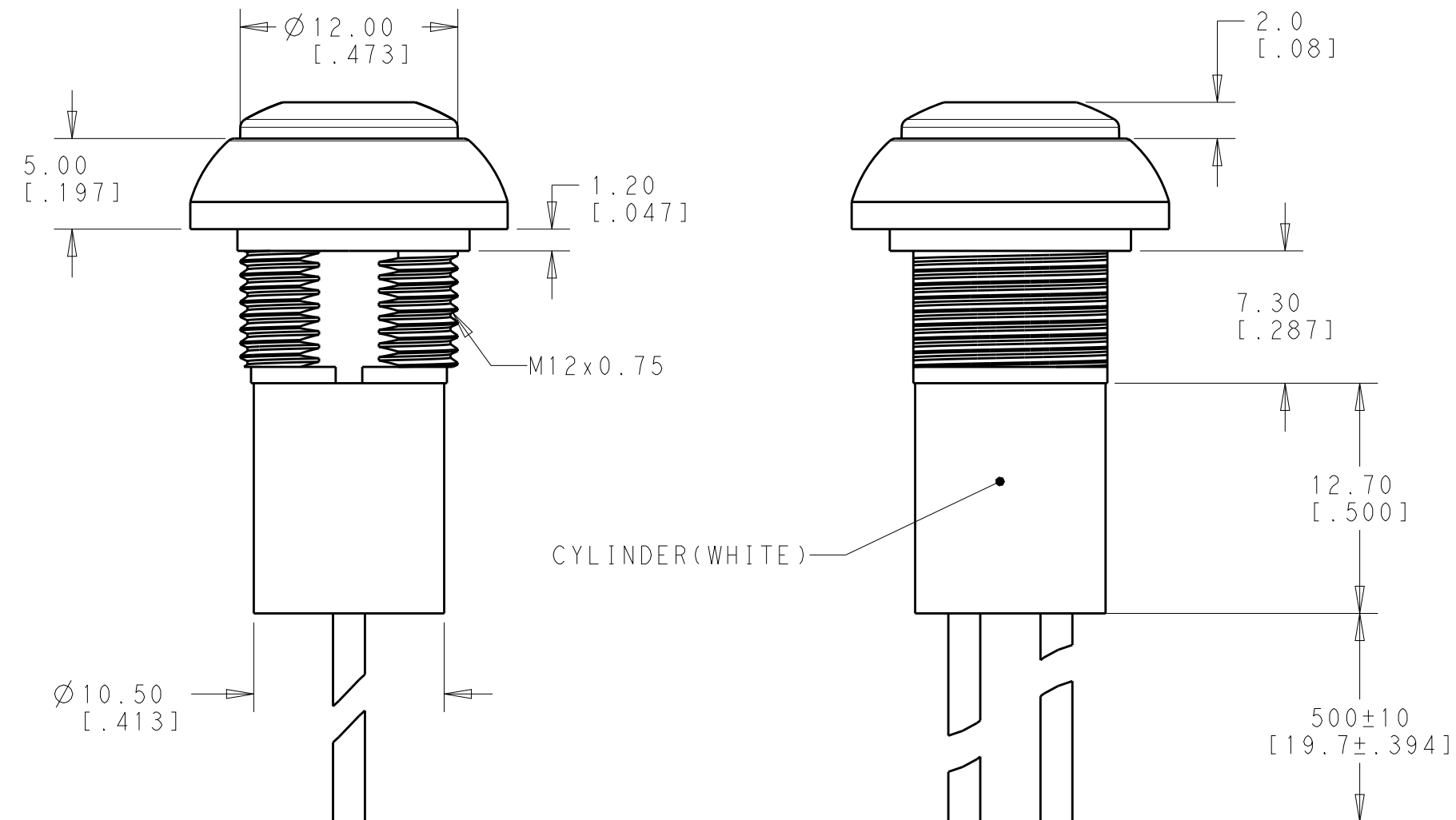


P	LTR	DESCRIPTION	DATE	DWN	APVD
	2	REVISED TOLERANCE	20APR2018	JS	AS



—CAP COLOR: SEE TABLE

FLYING LEADS WITH
COMMON STRAIN RELIEF
OFF - (ON)



PANEL CUT-OUT
THICKNESS: 1.5mm~4.0mm
[.059~.157]

SPECIFICATIONS:

MAXIMUM CURRENT/VOLTAGE RATING WITH RESISTIVE LOAD:
400mA 32VAC, 200mA 50VDC, 125mA 125VAC

INITIAL CONTACT RESISTANCE: 100mΩ MAXIMUM, RESISTANCE OF THE WIRE NOT INCLUDED.

INSULATION RESISTANCE: 1 GΩ MINIMUM AT 500 VDC

DIELECTRIC STRENGTH: 1,500 VAC RMS

CONTACT BOUNCE: 10ms

ELECTRICAL LIFE AT FULL LOAD: 500,000 CYCLES

MECHANICAL LIFE: 1,000,000 CYCLES

TOTAL TRAVEL: 1.5 (.059)

ACTUATION FORCE: 3 TO 6N

OPERATING TEMPERATURE: -30° TO 85° C

DEGREE OF PROTECTION: IP68, 1 HOUR @ 1 METER

TORQUE: 0.5N·m MAXIMUM APPLIED TO NUT

PACKAGING:

SWITCHES ARE BUNDLED. HARDWARE IS NOT ASSEMBLED TO THE SWITCH.

COMPLIANCE:

ALL MATERIALS AND FINISHES SHALL COMPLY WITH EU DIRECTIVE 2002/95/EC OF 27JAN2003(RoHS)

SOLDER PROCESSING:

MANUAL SOLDERING: SOLDER IRON, 30 WATTS, CONTROLLED AT 350° C, APPROXIMATELY 5 SECONDS WHILE APPLYING SOLDER.

1. HARDWARE IS SHIPPED UNASSEMBLED.

MATERIALS:

CAP: POLYAMIDE 6/6

PLUNGER: POLYAMIDE 6/6 OR POLYCARBONATE

RUBBER; SILICONE

BUSHING: POLYAMIDE 6/6

CASE: DIALLYL PHTHALATE (DAP) (UL94 V-0)

TERMINALS/CONTACTS: COPPER ALLOY, GOLD OVER

TERMINALS/CONNECTIONS: COPPER REELT, S
SILVER PLATED

HEX NUT: BRASS, NICKEL PLATED (1)

LOCK WASHER: BRASS, M



O-RING: SILICONE (1)

WIRE: UL 3385, AWG 20, SECTION 0.6mm²

WIRE: 304 SSOR,
SPRING: STEEL

CYLINDER: PTFE

2	TERMINAL 2	BLACK
1	TERMINAL 1	BLACK
NO.	DESCRIPTION	WIRE COLOR

THIS DRAWING IS A CONTROLLED DOCUMENT.		DWN RAVI.S 22FEB2018		 TE Connectivity	
DIMENSIONS: mm [INCHES]		CHR 22FEB2018 ALEXANDER SHARPE		NAME SWITCH, PUSHBUTTON, FLAT CAP NO LED, FLYING LEADS WITH COMMON STRAIN RELIEF, SEALED, OFF-(ON)	
TOLERANCES UNLESS OTHERWISE SPECIFIED:		APVD 22FEB2018 ALEXANDER SHARPE			
		PRODUCT SPEC -			
0 PLC ± 1 PLC ±0.4 [.016] 2 PLC ±0.25 [.010] 3 PLC ± 4 PLC ± ANGLES ±5° FINISH		APPLICATION SPEC -			
MATERIAL - - -		WEIGHT -		SIZE CAGE CODE DRAWING NO RESTRICTED TO A200779 C-2329384	
CUSTOMER DRAWING		SCALE 3:2		SHEET 1 of 2 REV 2	

D

D

C

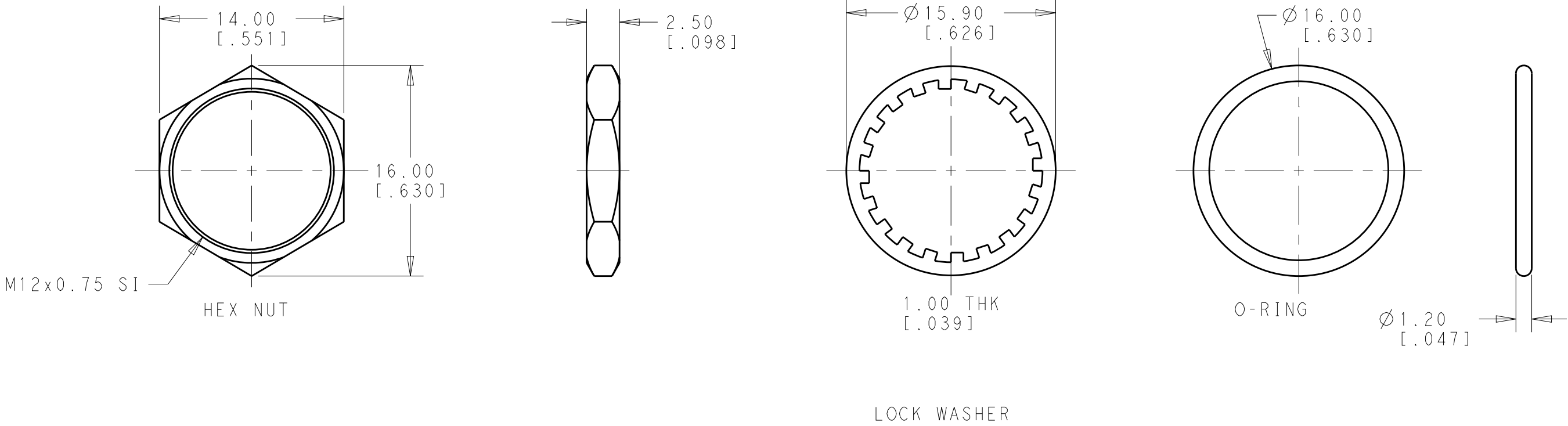
C

B

B

A

A



SINGLE POLE	OFF-(ON) MOMENTARY	FLYING LEADS WITH COMMON STRAIN RELIEF	FLAT, MATTE BLUE	N/A	PB6B2FM7M1CAL00S500	2329384-5
			FLAT, MATTE GREEN	N/A	PB6B2FM6M1CAL00S500	2329384-4
			FLAT, MATTE YELLOW	N/A	PB6B2FM5M1CAL00S500	2329384-3
			FLAT, MATTE RED	N/A	PB6B2FM3M1CAL00S500	2329384-2
			FLAT, MATTE BLACK	N/A	PB6B2FM2M1CAL00S500	2329384-1
POLE	THROW	TERMINAL TYPE	CAP TYPE & COLOR	LED COLOR	TE DESCRIPTIVE PART NUMBER	PART NUMBER

THIS DRAWING IS A CONTROLLED DOCUMENT.

DIMENSIONS:
mm[INCHES]

MATERIAL

-

-

TOLERANCES UNLESS OTHERWISE SPECIFIED:

0 PLC ±-

1 PLC ±0.4[.016]

2 PLC ±0.25[.010]

3 PLC ±-

4 PLC ±-

ANGLES ±5°

FINISH

-

-

DWN 22FEB2018
RAVL.S

CHK 22FEB2018
ALEXANDER SHARPE

APVD 22FEB2018
ALEXANDER SHARPE

PRODUCT SPEC

APPLICATION SPEC

WEIGHT

CUSTOMER DRAWING

TE Connectivity

NAME

SWITCH, PUSHBUTTON, FLAT CAP NO LED, FLYING LEADS WITH COMMON STRAIN RELIEF, SEALED, OFF-(ON)

SIZE

CAGE CODE

DRAWING NO

RESTRICTED TO

A200779

©-2329384

SCALE 3:2

SHEET 2 OF 2

REV 2

1471-9 (3/13)

Mouser Electronics

Authorized Distributor

Click to View Pricing, Inventory, Delivery & Lifecycle Information:

TE Connectivity:

[PB6B2FM7M1CAL00S500](#) [PB6B2FM6M1CAL00S500](#) [PB6B2FM5M1CAL00S500](#) [PB6B2FM2M1CAL00S500](#)
[PB6B2FM3M1CAL00S500](#)