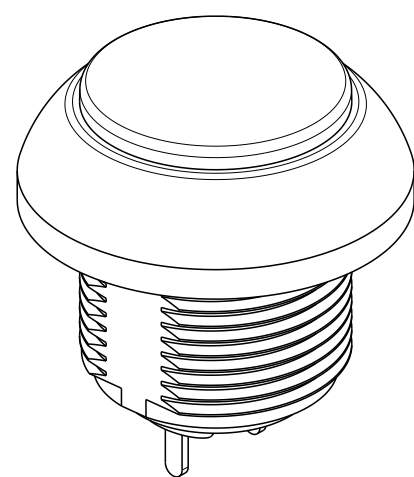
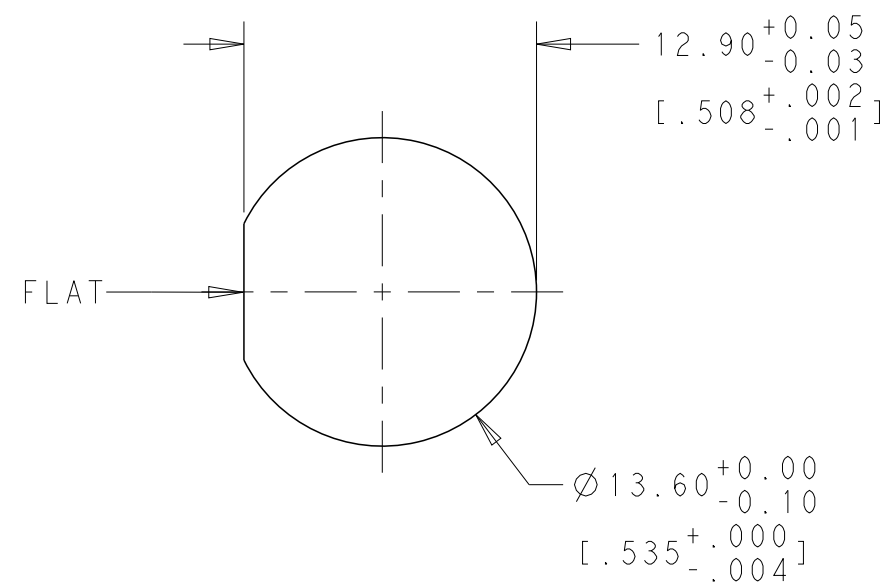
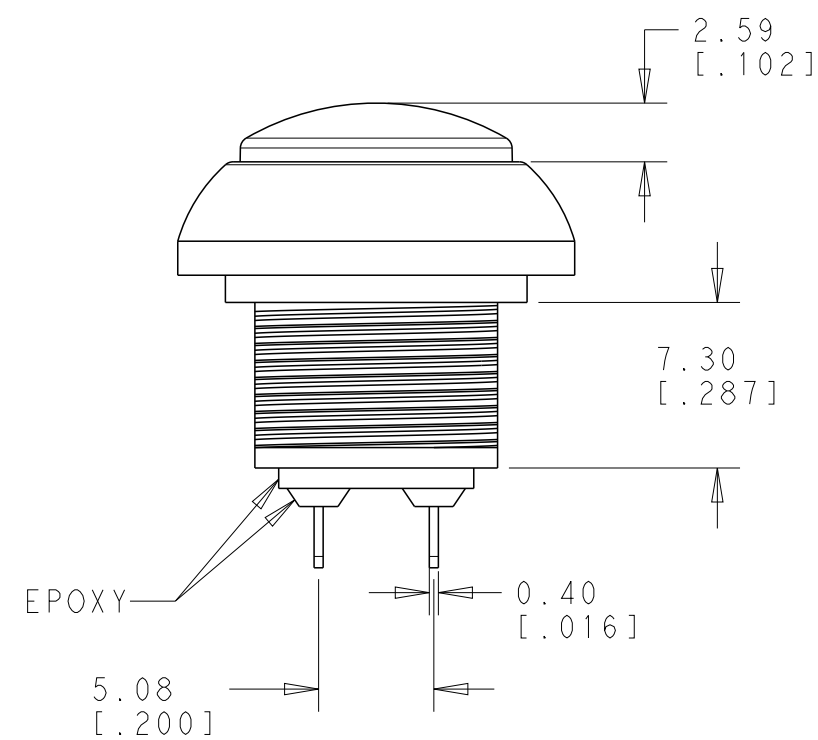




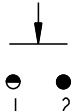
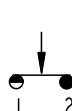
SOLDER TO PCB
OFF - (ON)





-CAP COLOR: SEE TABLE



PANEL CUT-OUT
THICKNESS: 1.5mm~4.0mm
[.059~.157]

Model No.	POS. 1	POS. 2
		
PB6	OFF	MOM (ON)
CONNECTED TERMINALS	OPEN	CLOSE
SCHEMATIC		

SWITCH FUNCTION

THIS DRAWING IS A CONTROLLED DOCUMENT.		DWN 22FEB2018 RAVL.S		 TE Connectivity	
		CHK 22FEB2018 ALEXANDER SHARPE			
DIMENSIONS: mm [INCHES]		TOLERANCES UNLESS OTHERWISE SPECIFIED:		NAME SWITCH, PUSHBUTTON, ROUND CAP NO LED, SOLDER TERMINATION, SEALED, OFF-(ON) AND ON-(OFF)	
		APVD 22FEB2018 ALEXANDER SHARPE			
		PRODUCT SPEC -			
		APPLICATION SPEC -		SIZE A2	
				CAGE CODE 00779	
				DRAWING NO G=2329360	
				RESTRICTED TO	
MATERIAL -		FINISH -		WEIGHT -	
-		-		CUSTOMER DRAWING	
-		-		SCALE 4:1	
				SHEET 2 OF 4	
				REV 1	

THIS DRAWING IS UNPUBLISHED.		RELEASED FOR PUBLICATION	
COPYRIGHT copyright_d81e-		ALL RIGHTS RESERVED.	

P	LTR	DESCRIPTION	DATE	DWN	APVD
	-	SEE SHEET 1	-	-	-

SINGLE POLE	ON-(OFF) MOMENTARY	13.40 [.527]	3.40 [.134] SOLDER LUG	ROUND, SHINY BLUE	N/A	PB7B2RS7M1CAL00	2-2329360-5		
				ROUND, SHINY GREEN	N/A	PB7B2RS6M1CAL00	2-2329360-4		
				ROUND, SHINY YELLOW	N/A	PB7B2RS5M1CAL00	2-2329360-3		
				ROUND, SHINY RED	N/A	PB7B2RS3M1CAL00	2-2329360-2		
				ROUND, SHINY BLACK	N/A	PB7B2RS2M1CAL00	2-2329360-1		
	OFF-(ON) MOMENTARY	12.90 [.508]	3.50 [.138] SOLDER POST	ROUND, SHINY BLUE	N/A	PB6B2RS7M4CAL00	2-2329360-0		
				ROUND, SHINY GREEN	N/A	PB6B2RS6M4CAL00	1-2329360-9		
				ROUND, SHINY YELLOW	N/A	PB6B2RS5M4CAL00	1-2329360-8		
				ROUND, SHINY RED	N/A	PB6B2RS3M4CAL00	1-2329360-7		
				ROUND, SHINY BLACK	N/A	PB6B2RS2M4CAL00	1-2329360-6		
		17.60 [.693]	8.20 [.323] SOLDER LUG	ROUND, SHINY BLUE	N/A	PB6B2RS7M3CAL00	1-2329360-5		
				ROUND, SHINY GREEN	N/A	PB6B2RS6M3CAL00	1-2329360-4		
				ROUND, SHINY YELLOW	N/A	PB6B2RS5M3CAL00	1-2329360-3		
				ROUND, SHINY RED	N/A	PB6B2RS3M3CAL00	1-2329360-2		
				ROUND, SHINY BLACK	N/A	PB6B2RS2M3CAL00	1-2329360-1		
		14.90 [.587]	5.50 [.217] SOLDER LUG	ROUND, SHINY BLUE	N/A	PB6B2RS7M2CAL00	1-2329360-0		
				ROUND, SHINY GREEN	N/A	PB6B2RS6M2CAL00	2329360-9		
				ROUND, SHINY YELLOW	N/A	PB6B2RS5M2CAL00	2329360-8		
				ROUND, SHINY RED	N/A	PB6B2RS3M2CAL00	2329360-7		
				ROUND, SHINY BLACK	N/A	PB6B2RS2M2CAL00	2329360-6		
		12.90 [.508]	3.50 [.138] SOLDER LUG	ROUND, SHINY BLUE	N/A	PB6B2RS7M1CAL00	2329360-5		
				ROUND, SHINY GREEN	N/A	PB6B2RS6M1CAL00	2329360-4		
				ROUND, SHINY YELLOW	N/A	PB6B2RS5M1CAL00	2329360-3		
				ROUND, SHINY RED	N/A	PB6B2RS3M1CAL00	2329360-2		
				ROUND, SHINY BLACK	N/A	PB6B2RS2M1CAL00	2329360-1		
		POLE	THROW	DIMENSION B	DIMENSION A, TERMINAL TYPE	CAP TYPE & COLOR	LED COLOR	TE DESCRIPTIVE PART NUMBER	PART NUMBER

THIS DRAWING IS A CONTROLLED DOCUMENT.		DWN RAVLS 22FEB2018
DIMENSIONS: mm[INCHES]		CHK ALEXANDER SHARPE 22FEB2018
TOLERANCES UNLESS OTHERWISE SPECIFIED:		APVD ALEXANDER SHARPE 22FEB2018
0 PLC ± 1 PLC ±0.4[.016] 2 PLC ±0.25[.010] 3 PLC ± 4 PLC ±		PRODUCT SPEC -
ANGLES ±5°		APPLICATION SPEC -
FINISH		WEIGHT -
MATERIAL -		CUSTOMER DRAWING

NAME SWITCH, PUSHBUTTON, ROUND CAP NO LED, SOLDER TERMINATION, SEALED, OFF-(ON) AND ON-(OFF)		SIZE A200779	CAGE CODE C-2329360	DRAWING NO	RESTRICTED TO
SCALE 4:1		SHEET 4	OF 4	REV 1	

Mouser Electronics

Authorized Distributor

Click to View Pricing, Inventory, Delivery & Lifecycle Information:

TE Connectivity:

<u>PB7B2RS6M1CAL00</u>	<u>PB7B2RS7M1CAL00</u>	<u>PB6B2RS5M3CAL00</u>	<u>PB6B2RS6M4CAL00</u>	<u>PB6B2RS2M3CAL00</u>
<u>PB6B2RS7M3CAL00</u>	<u>PB6B2RS6M2CAL00</u>	<u>PB6B2RS3M2CAL00</u>	<u>PB6B2RS5M1CAL00</u>	<u>PB6B2RS7M2CAL00</u>
<u>PB6B2RS3M3CAL00</u>	<u>PB6B2RS3M4CAL00</u>	<u>PB6B2RS7M4CAL00</u>	<u>PB7B2RS5M1CAL00</u>	<u>PB6B2RS2M1CAL00</u>
<u>PB6B2RS2M2CAL00</u>	<u>PB6B2RS6M1CAL00</u>	<u>PB6B2RS6M3CAL00</u>	<u>PB7B2RS2M1CAL00</u>	<u>PB7B2RS3M1CAL00</u>
<u>PB6B2RS7M1CAL00</u>	<u>PB6B2RS2M4CAL00</u>	<u>PB6B2RS3M1CAL00</u>	<u>PB6B2RS5M2CAL00</u>	<u>PB6B2RS5M4CAL00</u>