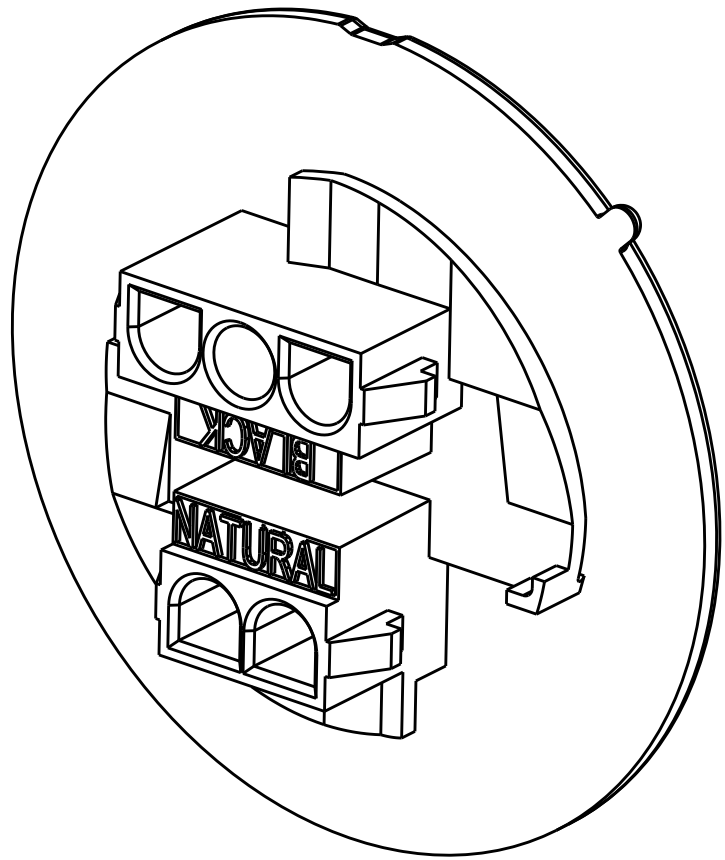
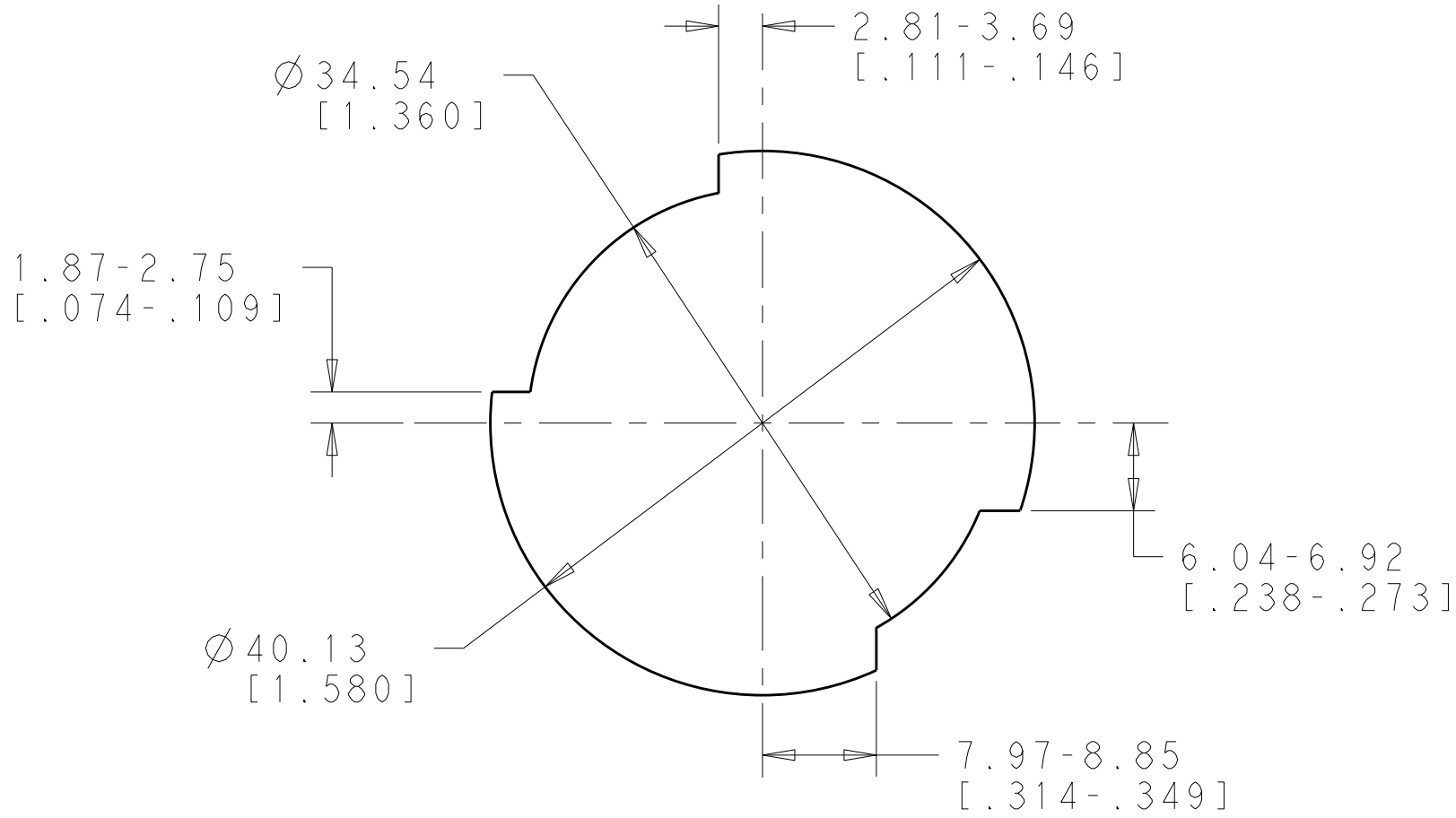
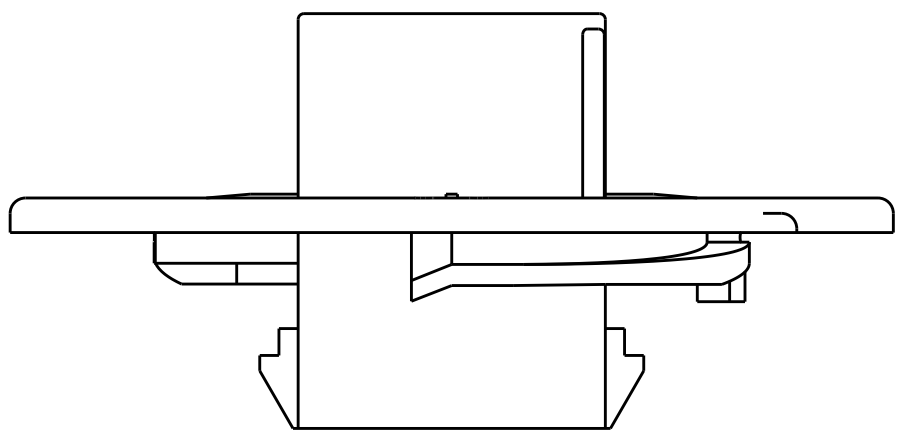
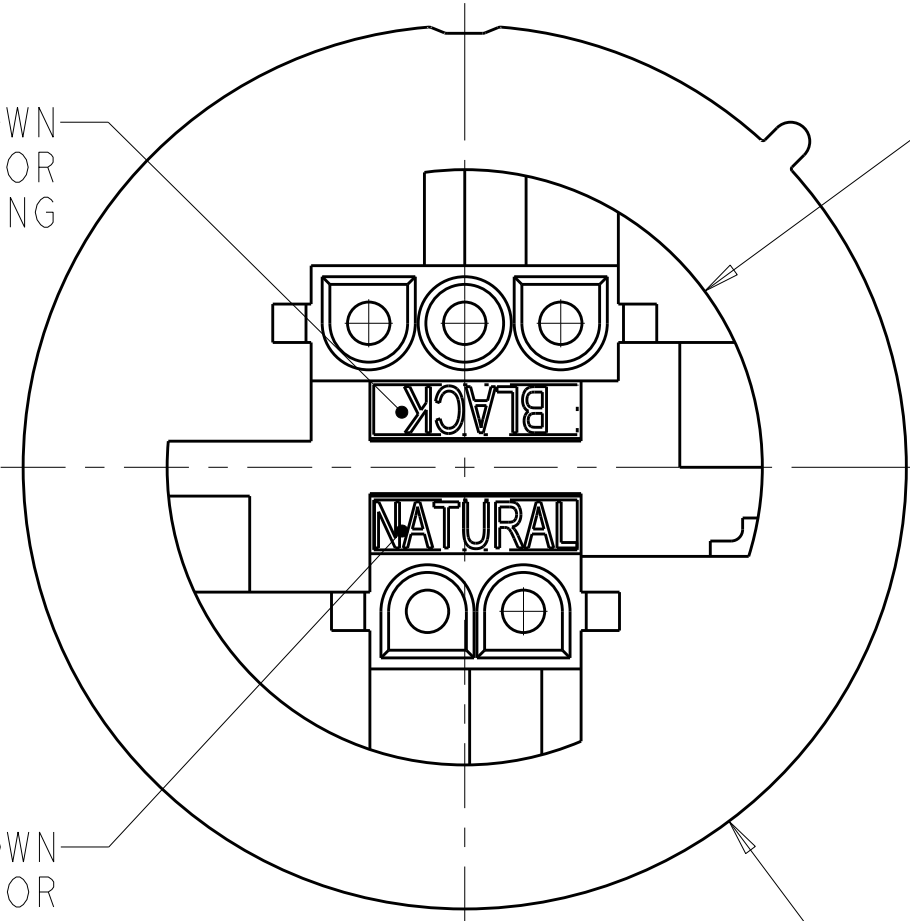


REVISIONS				
P	LYR	DESCRIPTION	DATE	OWN APVD
	B	REVISED PER ECR-17-017770	15DEC2017	BW SF



RECOMMENDED PANEL CUTOUT

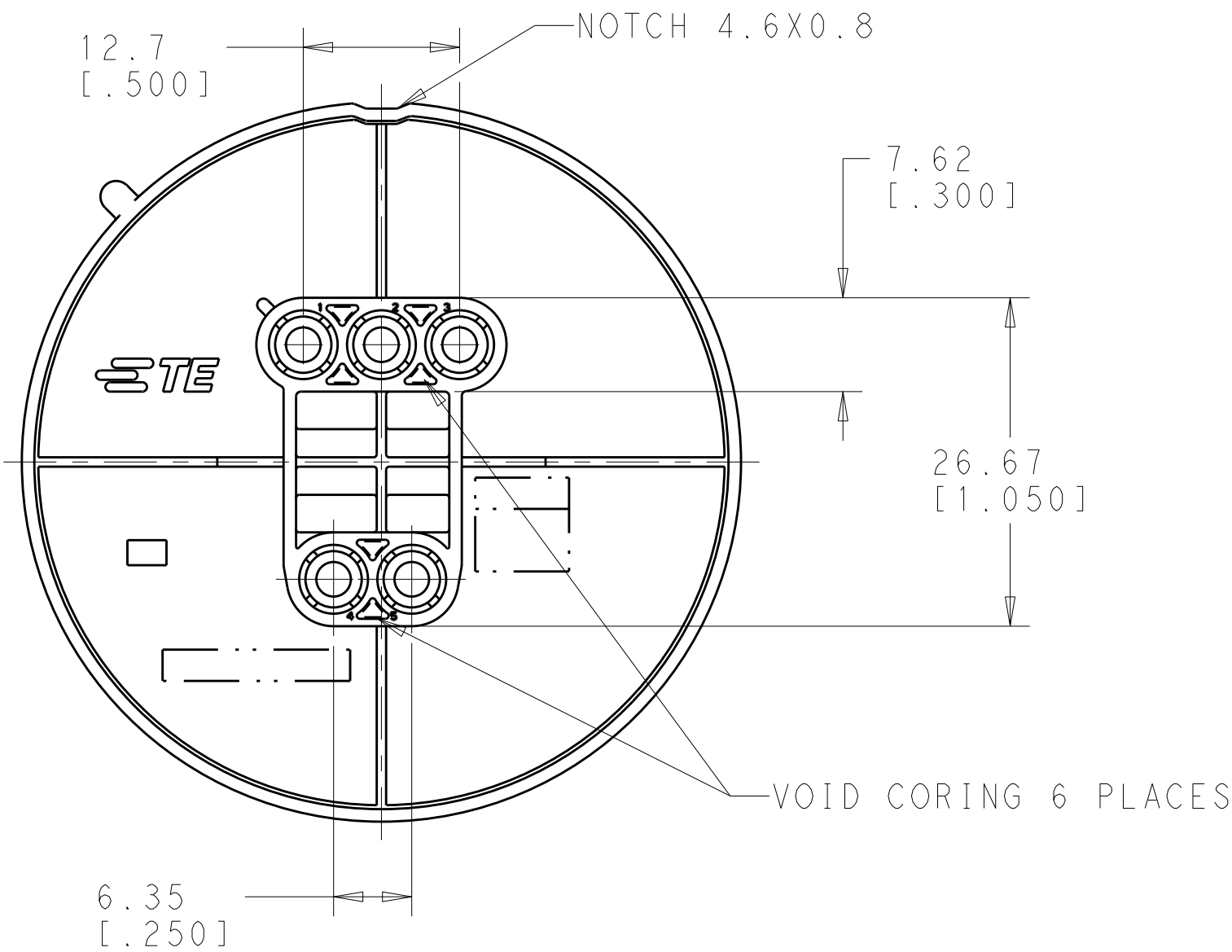
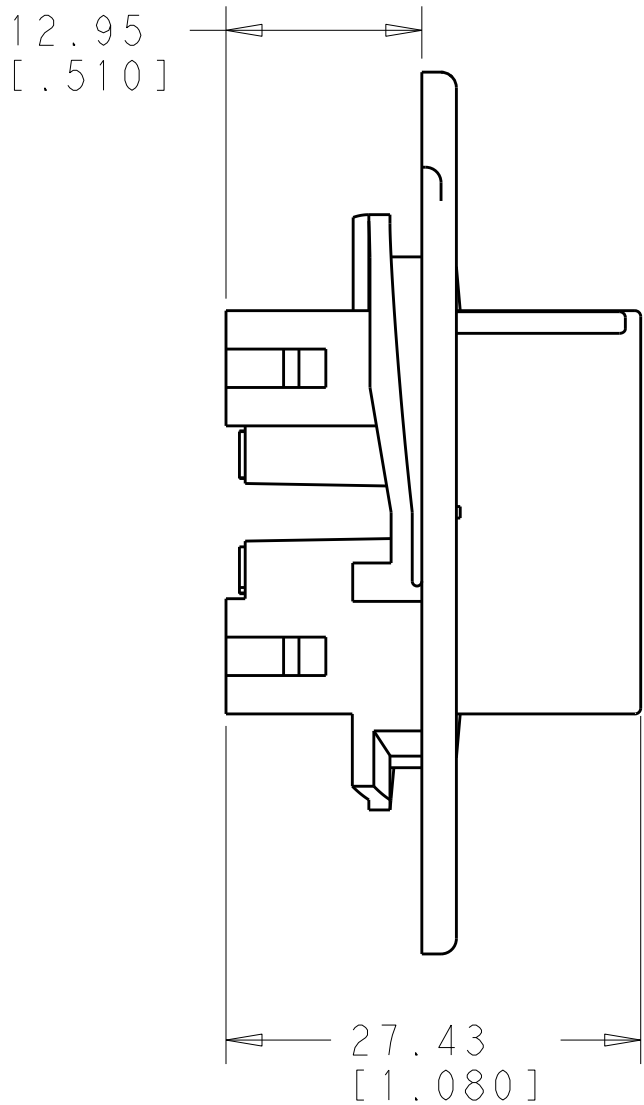
2294562-1 SHOWN
SEE TABLE FOR
 COLOR MARKING



R19.69
[.775]

2294562-1 SHOWN
SEE TABLE FOR
 COLOR MARKING

Ø58.42±2.54
[2.300±.100]



1 MATES WITH APPROPRIATE 2 POSITION AND 3 POSITION
UNIVERSAL MATE-N-LOK PLUG HOUSINGS.

RECOMMENDED PANEL THICKNESS 0.76-1.91 [.030-.075].

3 PANEL MUST BE PUNCHED SO THAT THE HOUSING ENTERS THE
PANEL IN THE SAME DIRECTION AS THE PUNCH.

4 DIMENSIONS SHOWN REPRESENT PRODUCT IN DRY, AS MOLDED,
CONDITION. ADDITIONAL 2% GROWTH DUE TO SUBSEQUENT
MOISTURE ABSORPTION MAY OCCUR AND SHOULD BE
ACCOUNTED FOR.

3 POSITION MATING PART COLOR CODING MARKING, SEE TABLE.

2 POSITION MATING PART COLOR CODING MARKING, SEE TABLE.

THIS PRODUCT HAS NOT COMPLETED QUALIFICATION TESTING.

BROWN	RED	RED	2294562-2
NATURAL	BLACK	NATURAL	2294562-1
2 POSITION COLOR MARKING	3 POSITION COLOR MARKING	RESIN COLOR	PART NO.
THIS DRAWING IS A CONTROLLED DOCUMENT.		OWN RODNEY SMITH 12APR16 CHK EVAN WICKES 12APR16 APVD EVAN WICKES 12APR16	
DIMENSIONS:		PRODUCT SPEC	
I/N		APPLICATION SPEC	
TOLERANCES UNLESS OTHERWISE SPECIFIED:		WEIGHT	
9 PLC ±.108-1031		CUSTOMER DRAWING	
3 PLC ±.114-1010		SCALE 2:1	
5 PLC ±.114-1010		SHEET 1 OF 1	
4 PLC ±.114-1010		REV B	
ANGLES ±.114-1010			
FINISH			
MATERIAL NYLON, V2			

Mouser Electronics

Authorized Distributor

Click to View Pricing, Inventory, Delivery & Lifecycle Information:

[TE Connectivity:](#)

[2294562-2](#)