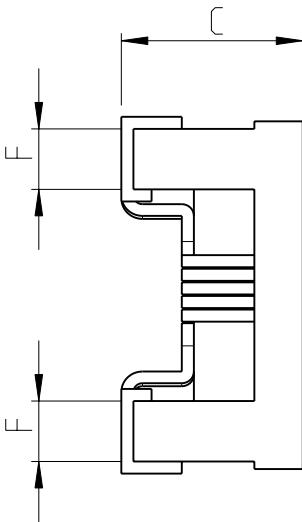
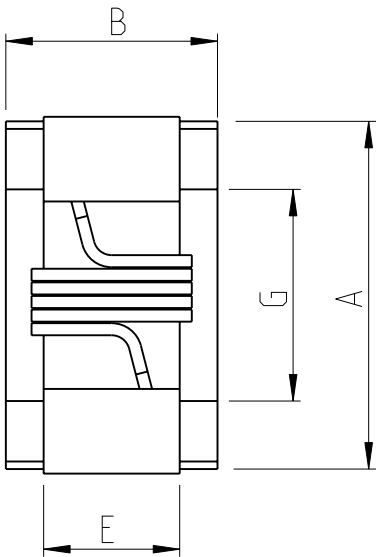
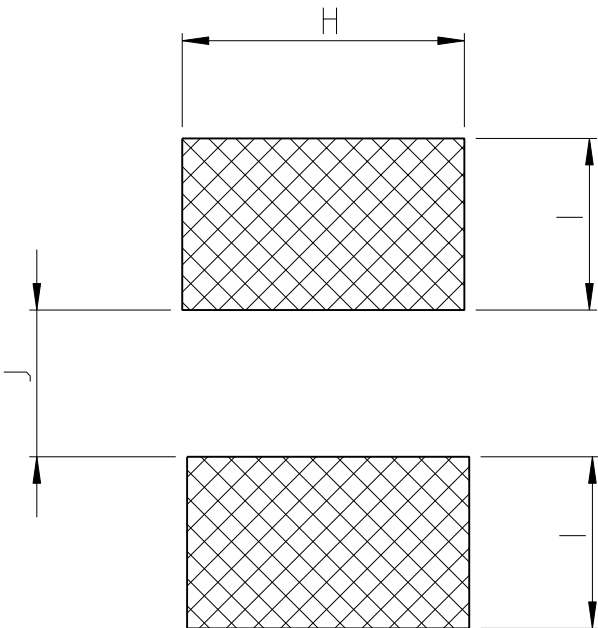


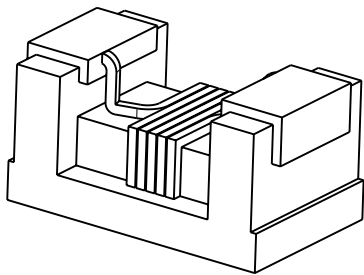
LOC	DIST	REVISIONS					
		P	LTR	DESCRIPTION		DATE	APVD
-	-		BA	NEW DRAWING		24APR2012	ST.P


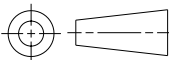


FOR FURTHER INFORMATION SEE DATA SHEET FOR
3650 SERIES-LOW INDUCTANCE,HIGH FREQUENCY CHIP INDUCTOR



SERIES	A Max.	B Max.	C Max.	E	F	G	H	I	J
3654 1E	1.15	0.70	0.60	0.45	0.20	0.60	0.65	0.35	0.50



THIS DRAWING IS A CONTROLLED DOCUMENT.		DWN RAGHAVENDRA K 24APR2012	 TE Connectivity						
DIMENSIONS: mm		CHK ALLAN P 24APR2012	NAME - CHIP INDUCTOR TYPE 3654 0201 SERIES -						
		APVD STEPHEN.P 24APR2012							
		PRODUCT SPEC -	SIZE A 3			CAGE CODE 00779	DRAWING NO C=2176086	RESTRICTED TO -	
MATERIAL -		APPLICATION SPEC -	WEIGHT 0.001 GRAM			SCALE 32:1		SHEET 1 OF 1	REV BA
TOLERANCES UNLESS OTHERWISE SPECIFIED: 0 PLC ±- 1 PLC ±0.5 2 PLC ±0.2 3 PLC ±0.1 4 PLC ±0.0001 ANGLES ±		CUSTOMER DRAWING							
FINISH -									

Mouser Electronics

Authorized Distributor

Click to View Pricing, Inventory, Delivery & Lifecycle Information:

[TE Connectivity:](#)

[2-2176086-9](#)