



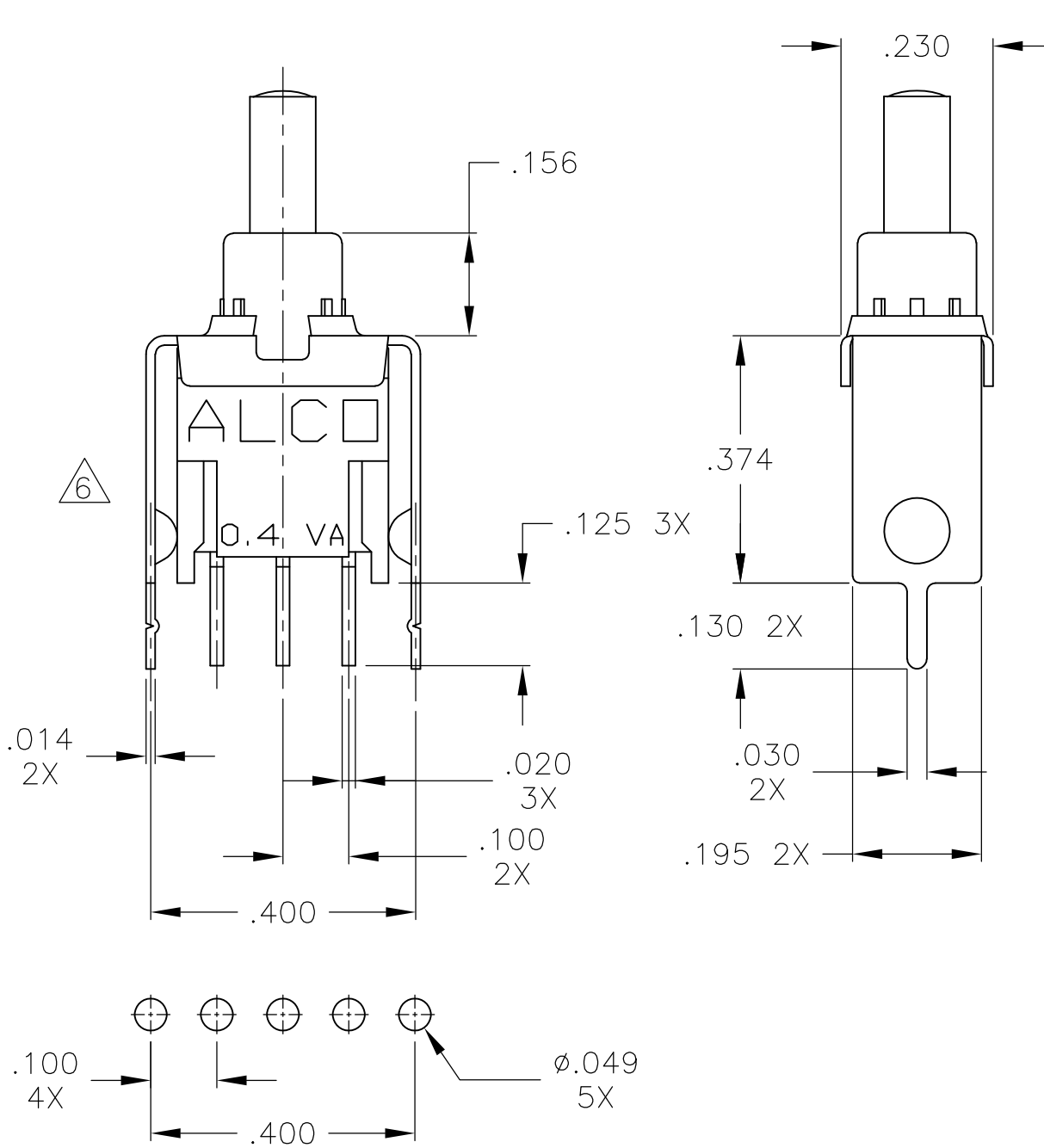
LOC		DIST		REVISIONS			
P	LTR	DESCRIPTION		DATE	DWN	APVD	
-	-	SEE SHEET 1		-	-	-	

D

C

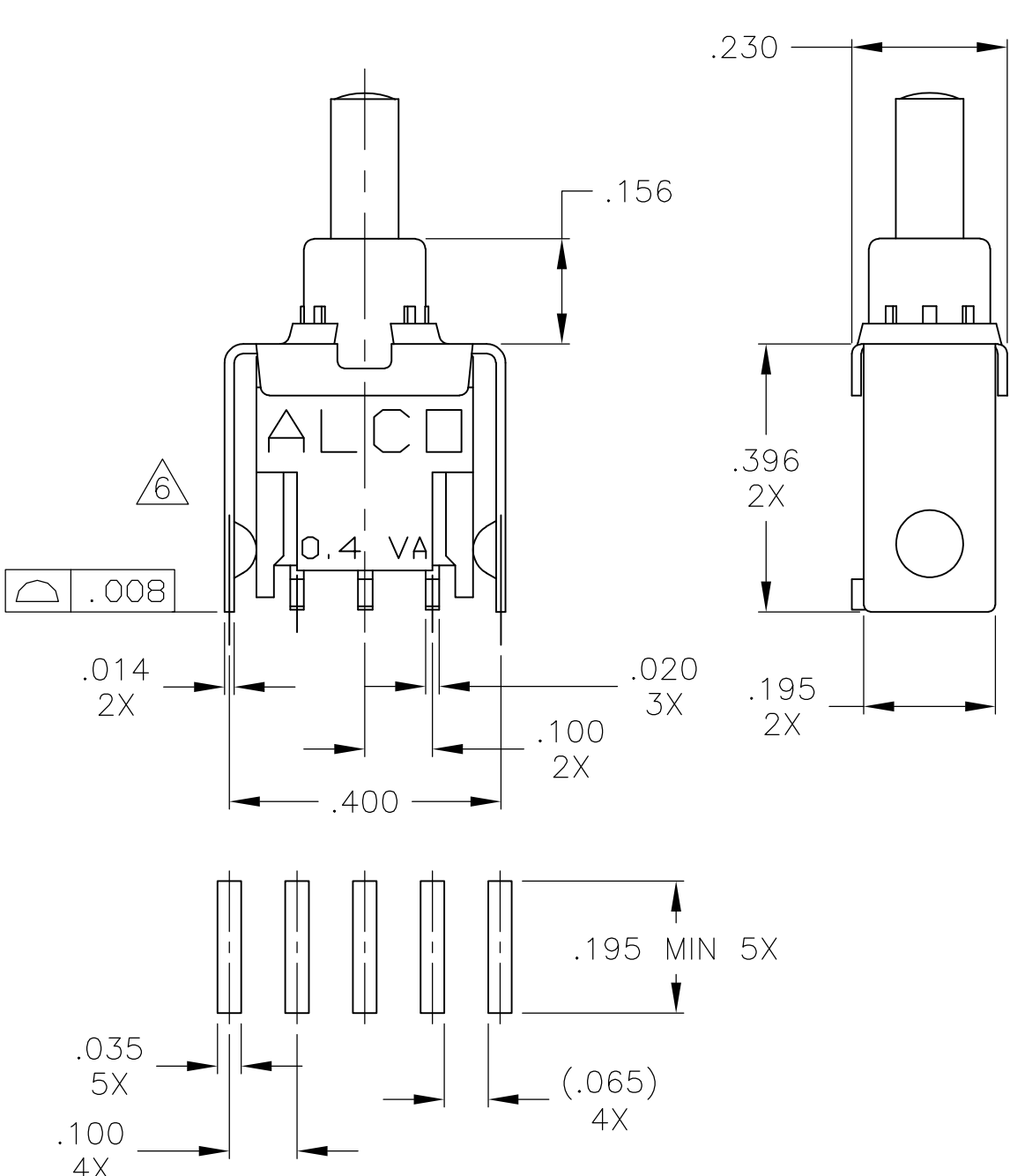
B

A



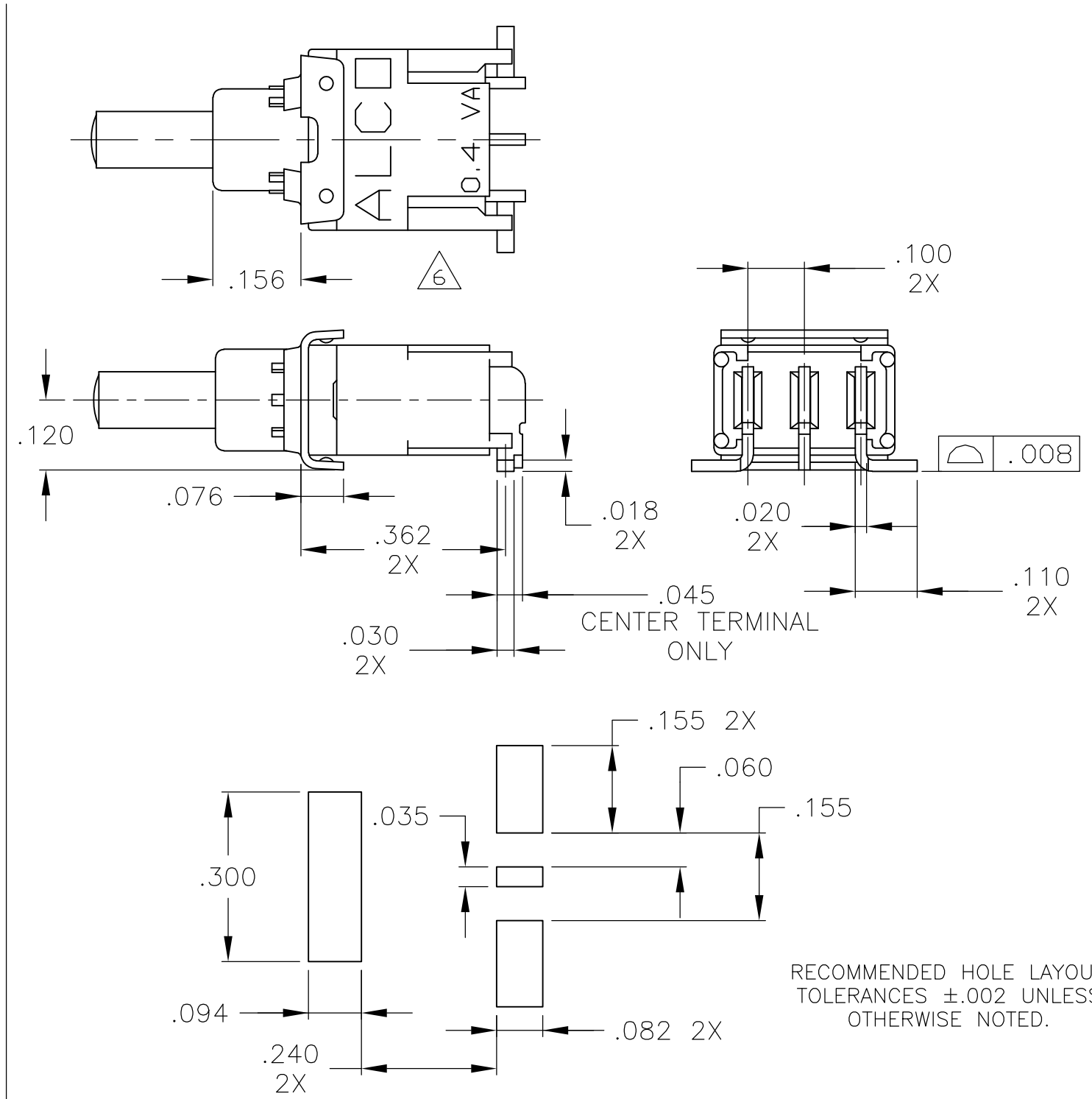
RECOMMENDED HOLE LAYOUT  
TOLERANCES  $\pm .002$  UNLESS  
OTHERWISE NOTED.

**PCV** PC WITH VERTICAL  
SUPPORT BRACKET

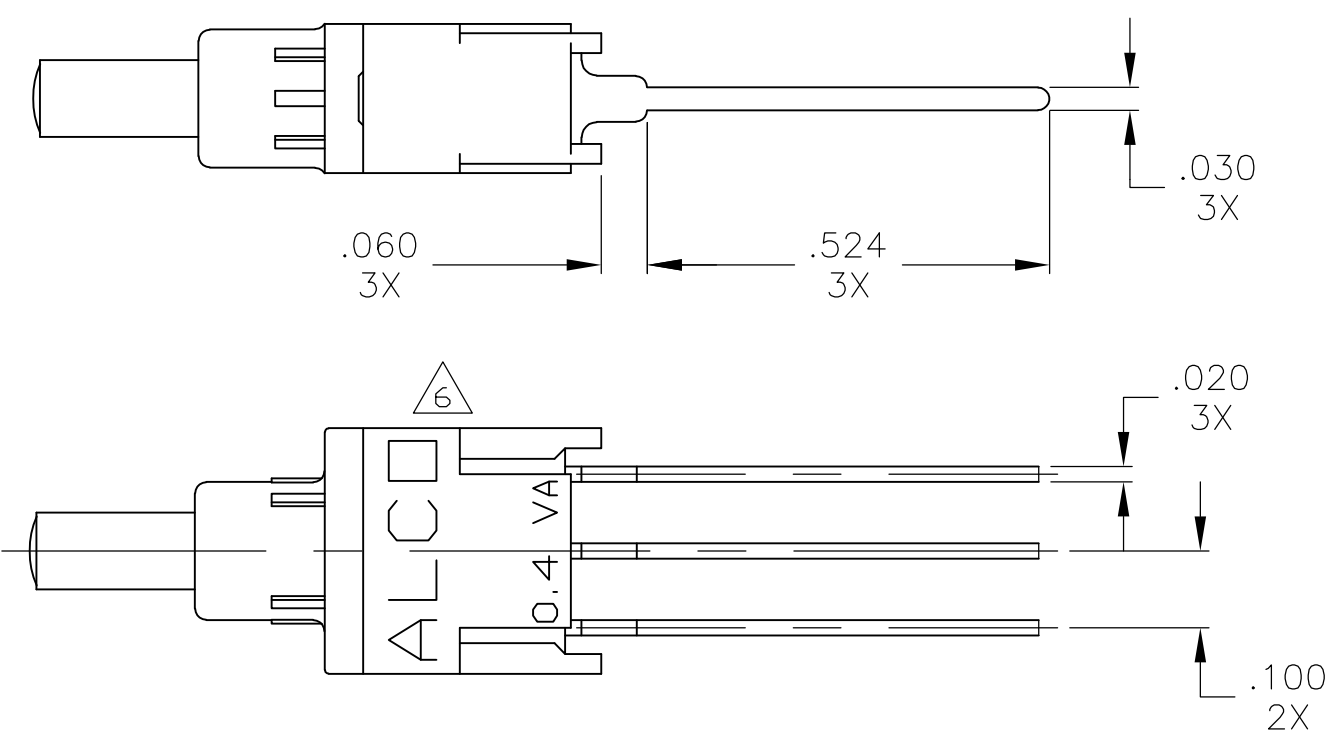


RECOMMENDED HOLE LAYOUT  
TOLERANCES  $\pm .002$  UNLESS  
OTHERWISE NOTED.

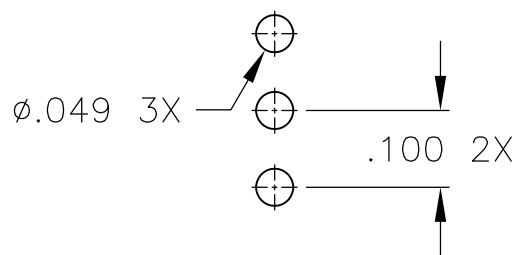
**SPC** SURFACE MOUNT




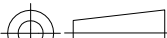
**SRA** SURFACE MOUNT RIGHT ANGLE,  
"L" BENDA



**WW** WIRE WRAP



RECOMMENDED HOLE LAYOUT  
TOLERANCES  $\pm .002$  UNLESS  
OTHERWISE NOTED.

FILE NAME: 40287S1L		THIS DRAWING IS A CONTROLLED DOCUMENT.		DWN C.M.M. 9-19-90		 TE Connectivity									
DIRECTORY: PSHSWTCH				CHK B.J.A. 12-20-90											
CODE IDENT. NO. 91506				APVD B.J.A. 12-20-90		NAME  OUTLINE DRAWING SEALED PUSHBUTTON SWITCH SINGLE POLE TSP SERIES									
				TOLERANCES UNLESS OTHERWISE SPECIFIED:						PRODUCT SPEC  —					
				0 PLC ± — 1 PLC ± — 2 PLC ± — 3 PLC ± .010 4 PLC ± — ANGLES ± 1° FINISH						APPLICATION SPEC  —					
PRODUCT CODE: B53		MATERIAL  SEE SPECIFICATIONS		SEE NOTES		WEIGHT —		SIZE A2		CAGE CODE 00779		DRAWING NO C-1-1437573-1		RESTRICTED TO —	
CUSTOMER DRAWING						SCALE 4:1		SHEET 2 of 4		REV H					

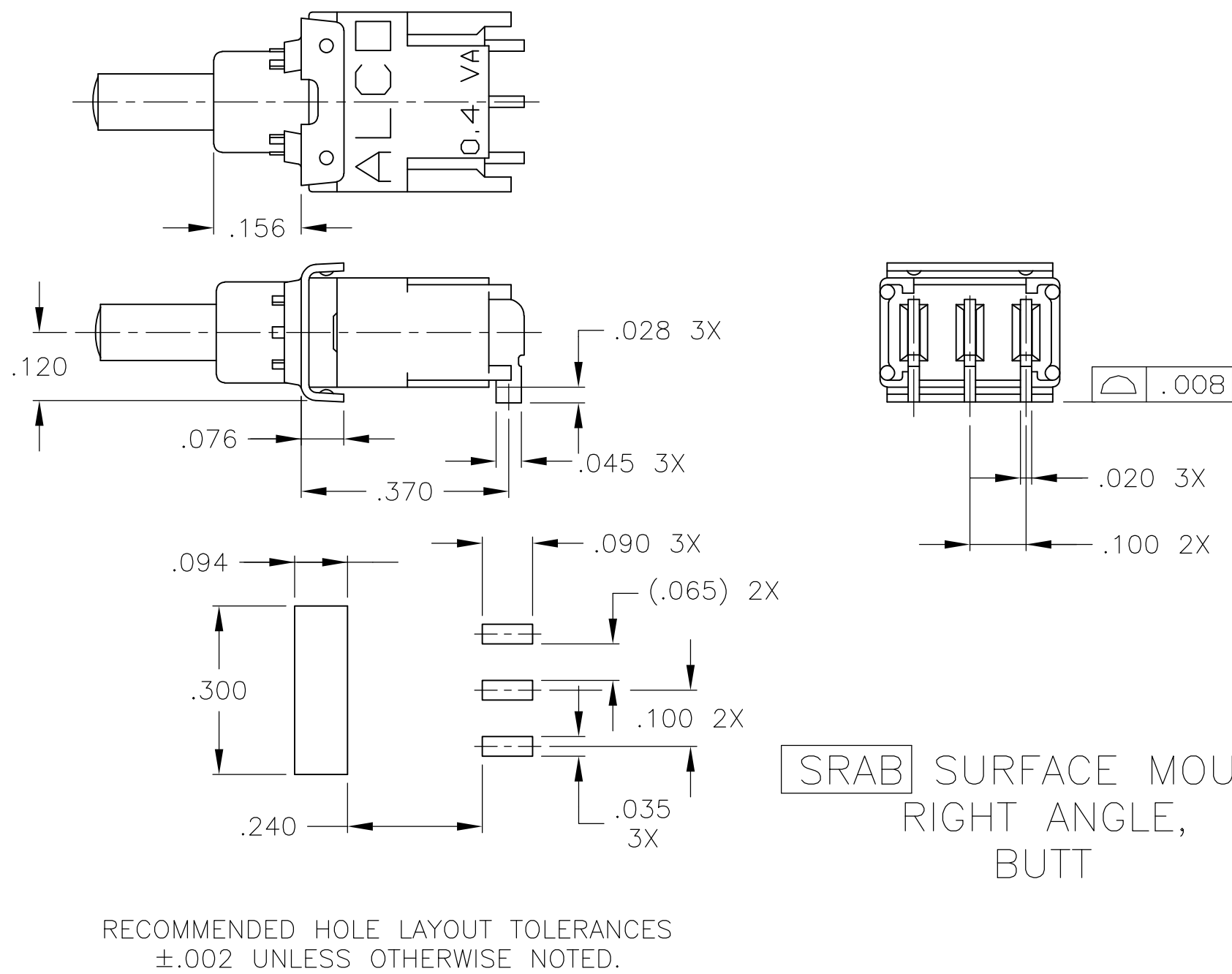
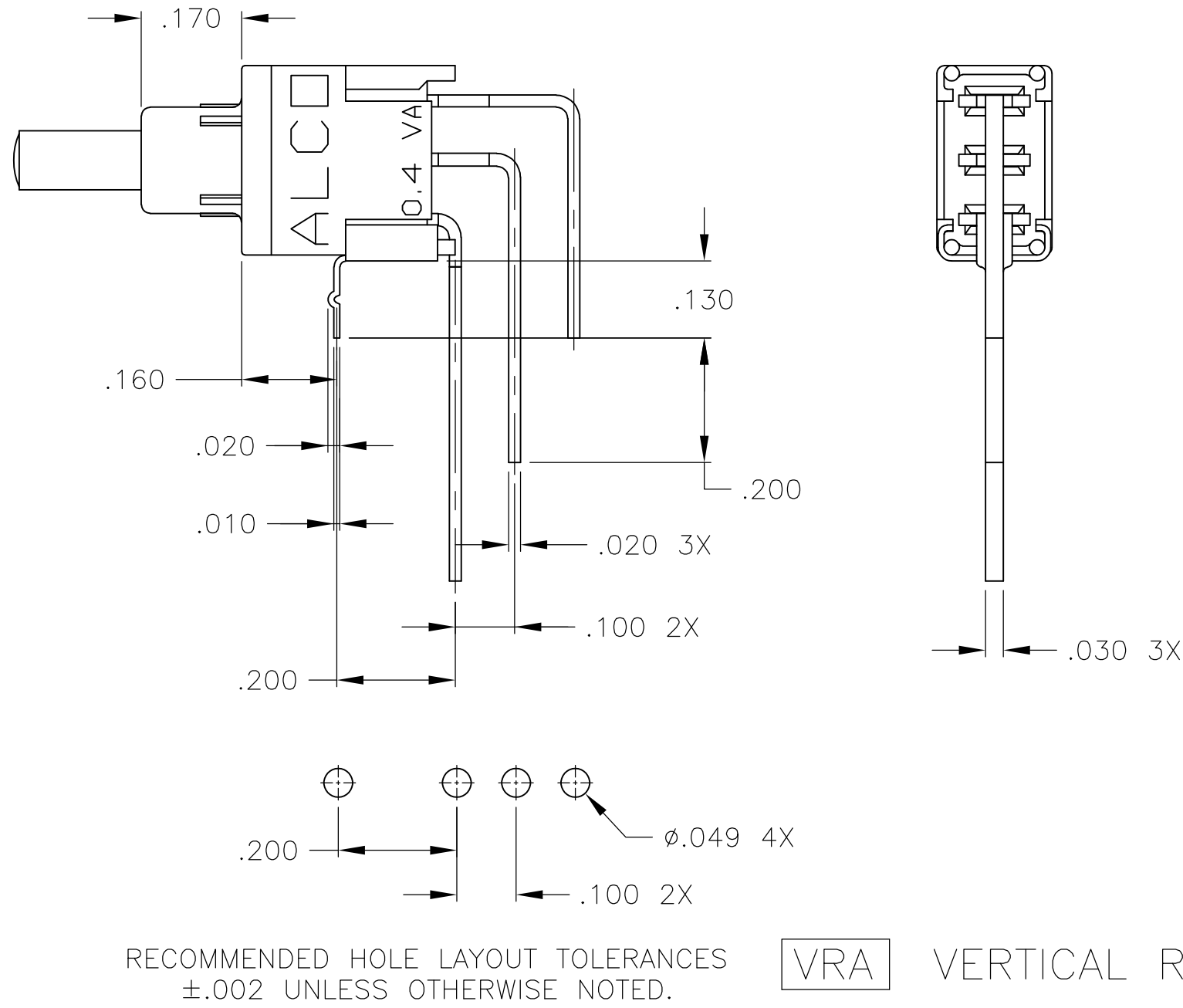
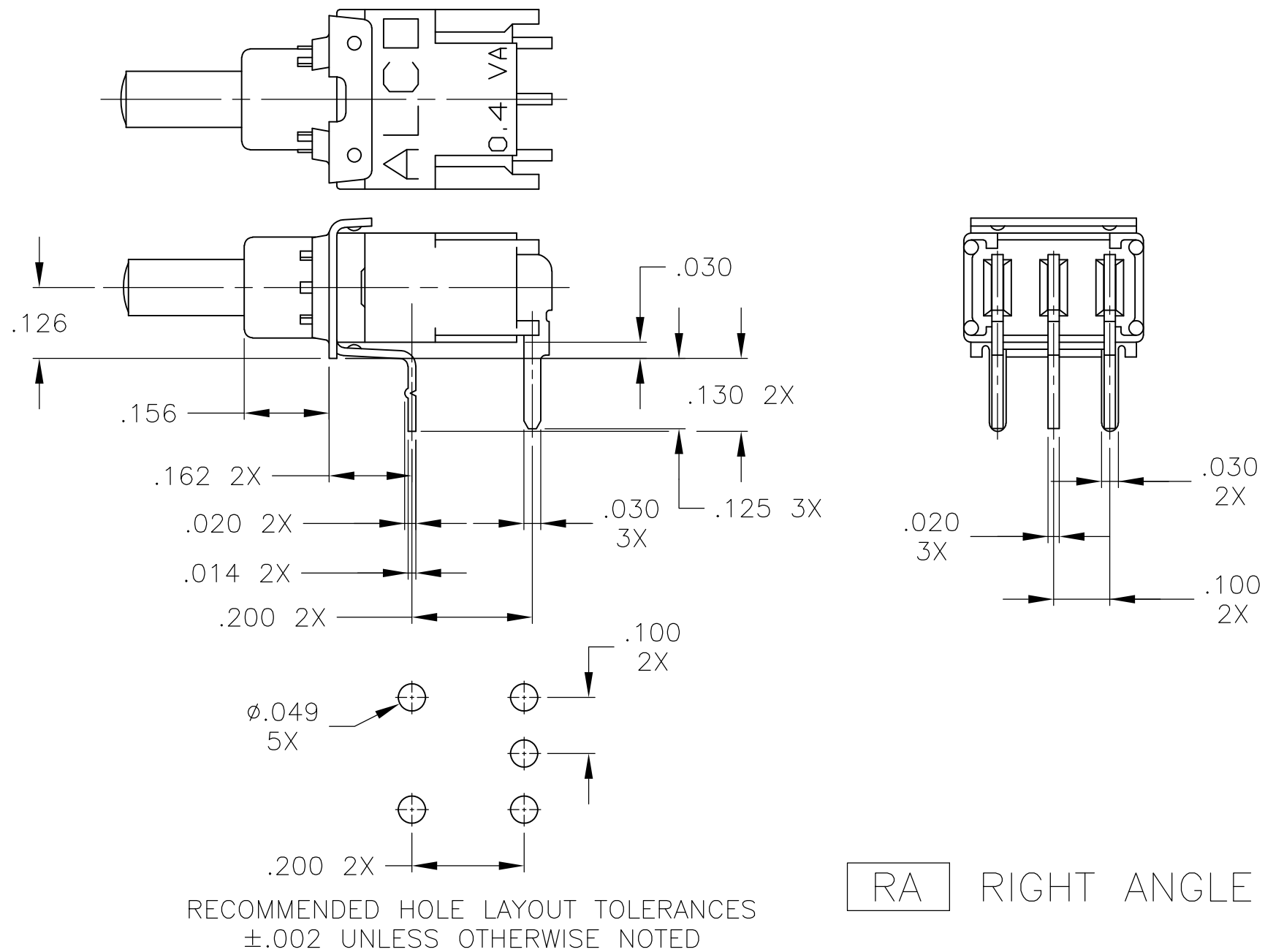
LOC		DIST		REVISIONS			
P	LTR	DESCRIPTION		DATE	DWN	APVD	
-	-	SEE SHEET 1		-	-	-	

D

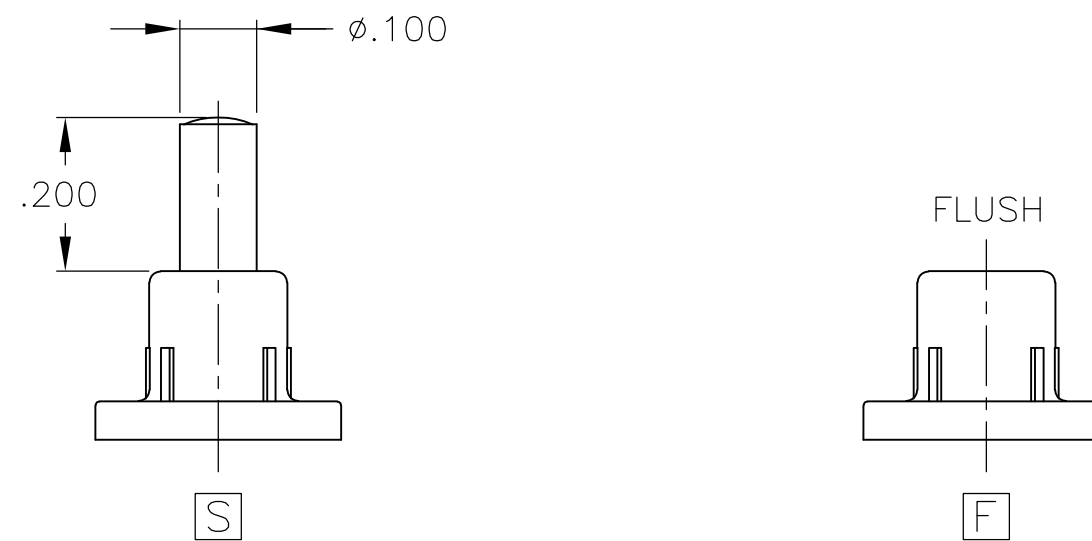
C

B

A



## ACTUATORS



FILE NAME: 40287S1L		THIS DRAWING IS A CONTROLLED DOCUMENT.		DWN C.M.M.	9-19-90	TE Connectivity	
DIRECTORY: PSHSWCH		DIMENSIONS: INCHES		CHK B.J.A.	12-20-90		
CODE IDENT. NO. 91506		TOLERANCES UNLESS OTHERWISE SPECIFIED:		APVD B.J.A.	12-20-90	NAME OUTLINE DRAWING SEALED PUSHBUTTON SWITCH SINGLE POLE TSP SERIES	
PRODUCT CODE: B53		MATERIAL SEE SPECIFICATIONS		PRODUCT SPEC		SIZE A2	CAGE CODE 00779
				APPLICATION SPEC		DRAWING NO. C-1-1437573-1	RESTRICTED TO -
				WEIGHT -		SCALE 4:1	SHEET 3 of 4
				CUSTOMER DRAWING		REV H	

4

3

2

1

THIS DRAWING IS UNPUBLISHED.

RELEASED FOR PUBLICATION

© COPYRIGHT - By -

ALL RIGHTS RESERVED.

LOC

DIST

REVISIONS

P

LTR

DESCRIPTION

DATE

DWN

APVD

-

SEE SHEET 1

-

-

-

D

C

B

A

FILE NAME:  
40287S1L

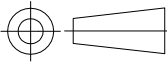
DIRECTORY:  
PSHSWTH

CODE IDENT. NO.  
91506

PRODUCT CODE: B53

THIS DRAWING IS A CONTROLLED DOCUMENT.

DIMENSIONS:  
INCHES



MATERIAL  
SEE SPECIFICATIONS

SEE NOTES

DWN  
C.M.M.  
9-19-90

CHK  
B.J.A.  
12-20-90

APVD  
B.J.A.  
12-20-90

PRODUCT SPEC  
-

APPLICATION SPEC  
-

WEIGHT  
-

CUSTOMER DRAWING

TOLERANCES UNLESS  
OTHERWISE SPECIFIED:

0 PLC ± -

1 PLC ± -

2 PLC ± -

3 PLC ± .010

4 PLC ± -

ANGLES ± 1°

FINISH

9-19-90


12-20-90

12-20-90

12-20-90

12-20-90

12-20-90

TE Connectivity

NAME  
OUTLINE DRAWING SEALED PUSHBUTTON SWITCH  
SINGLE POLE TSP SERIES

SIZE  
A2

CAGE CODE  
00779

DRAWING NO  
C=1-1437573-1

RESTRICTED TO  
-

SCALE  
4:1

SHEET  
4 of 4

REV  
H

1-1437573-1

OBSOLETE

OBSOLETE

OBSOLETE

OBSOLETE

OBSOLETE

OBSOLETE

PRELIMINARY PART

TSPD11CGPC01-1437573-1

TSPD11CGPC21-1437573-3

TSPD11CGPCV01-1437573-4

TSPD11CGRA01-1437573-5

TSPD11CGRA21-1437573-7

TSPD11CGRA64-1437573-2

TSPD11CGSPC01-1437573-8

TSPD11CGSPC21571210-1

TSPD11CGSRA0TR1571733-1

TSPD11CGSRA01-1437573-9

TSPD11CGSRA22-1437573-0

TSPD11CGSRAB02-1437573-1

TSPD11CGVRA02-1437573-2

TSPD11CGWW02-1437573-3

TSPD11FGPC02-1437573-4

TSPD11FGPCV02-1437573-5

TSPD11FGRA02-1437573-6

TSPD11FGSPC02-1437573-7

TSPD11FGSRA02-1437573-8

TSPD11FGSRAB02-1437573-9

TSPD11FGVRA03-1437573-0

TSPDF11CGPC03-1437573-1

TSPDF11CGSRAB0TR1571460-1

TSPDF11CGSRA0TR1571533-1

TSPDF11CGRA03-1437573-2

TSPDF11CGSRA03-1437573-3

TSPDF11CGVRA03-1437573-4

TSPDF11FGPC03-1437573-5

TSPDF11FGRA03-1437573-6

TSPDF11FGSRA03-1437573-7

TSPDF11FGVRA01571369-1

MODEL NUMBER

PART NUMBER

1471-9 (3/11)

# Mouser Electronics

Authorized Distributor

Click to View Pricing, Inventory, Delivery & Lifecycle Information:

[TE Connectivity:](#)

[2-1437573-3](#)