

LOC	DIST	REVISIONS					
		P	LTR	DESCRIPTION	DATE	DWN	APVD
AD	00		A	ECO 06 000585	03AUG06	BSV	MZ

D

D

C

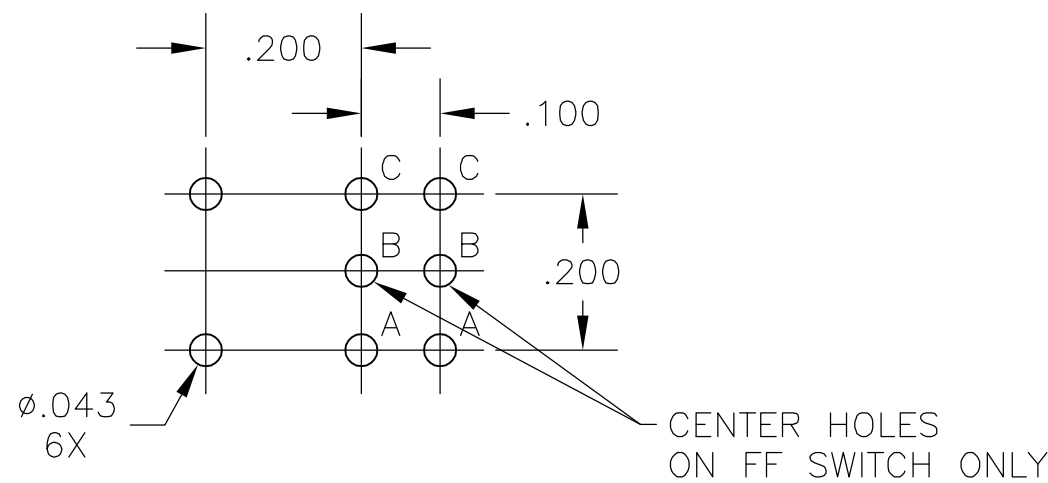
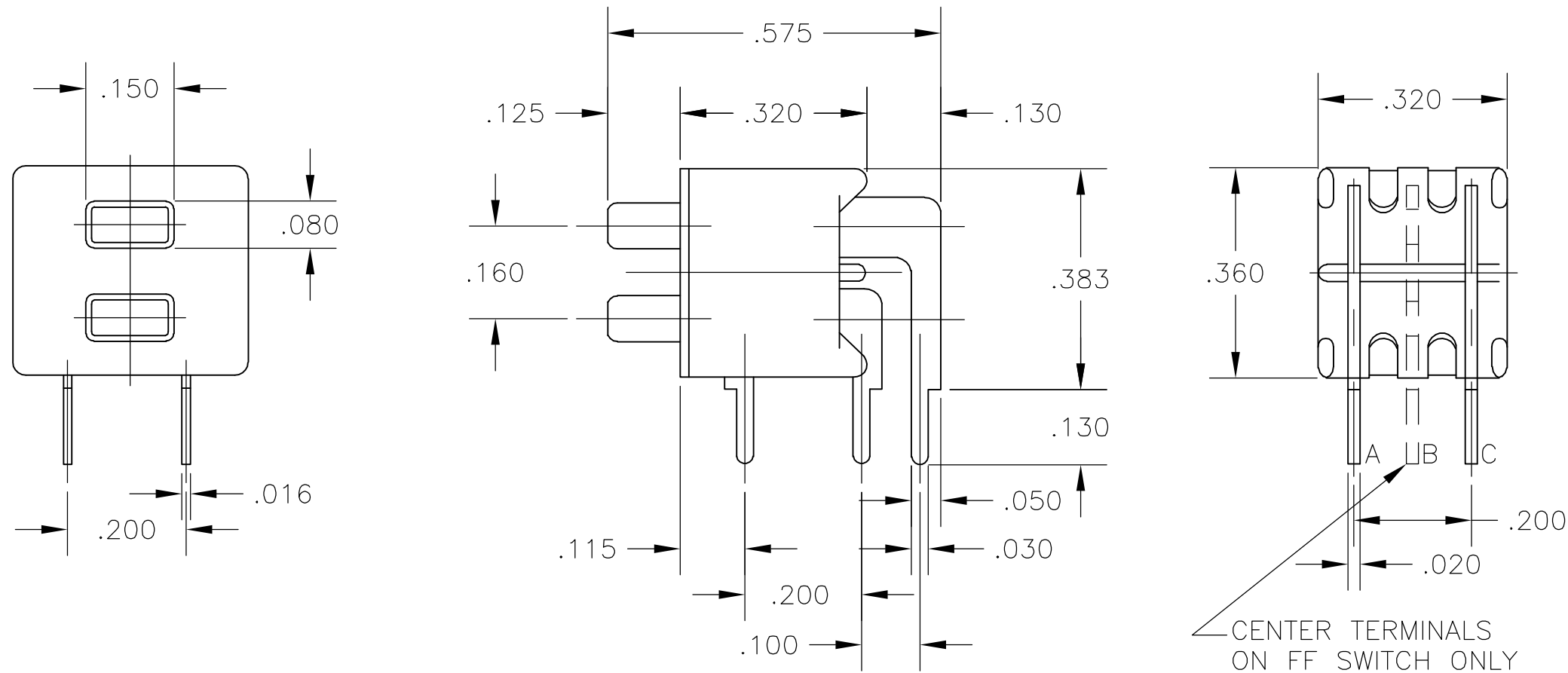
C

B

B

A

A



RECOMMENDED HOLE LAYOUT  
TOLERANCE  $\pm .002$  UNLESS OTHERWISE NOTED

SPECIFICATIONS:

MATERIALS:  
CASE: HIGH TEMPERATURE POLYESTER  
ACTUATOR: POLYAMIDE  
CONTACT: GOLD OVER NICKEL BARRIER  
TERMINAL: COPPER ALLOY, TIN/LEAD PLATE

ELECTRICAL:  
CONTACT RATING: 0.4 VA MAX. @20 VDC OR PEAK AC  
INITIAL CONTACT RESISTANCE: 20 MILLIOHMS MAX.  
INSULATION RESISTANCE: 1000 MEGOHMS @ 500 VDC MIN.  
DIELECTRIC STRENGTH: 1000 VOLTS RMS @ SEA LEVEL  
LIFE EXPECTANCY: 50,000 CYCLES MIN

MECHANICAL:  
ACTUATION FORCE: 50 TO 400 GRAMS AVERAGE


ENVIRONMENTAL:  
OPERATING TEMPERATURE:  $-22^{\circ}\text{F}$  TO  $+149^{\circ}\text{F}$  ( $-30^{\circ}\text{C}$  TO  $+65^{\circ}\text{C}$ )  
STORAGE TEMPERATURE:  $-22^{\circ}\text{F}$  TO  $+149^{\circ}\text{F}$  ( $-30^{\circ}\text{C}$  TO  $+65^{\circ}\text{C}$ )

NOTES:

- INTERPRET DRAWING PER ASME Y14.5M-1994
- TERMINALS ARE EPOXY SEALED.

(\*) SPECIFY BUTTON COLOR -  
(0)= BLACK  
(2)= RED  
(6)= BLUE

B TO C (MOM.)	B TO A	2XSPDT MOMENTARY	TP21FFG-RA (*)
A TO C	NONE	2XSPST NORMALLY OPEN	TP21CCG-RA (*)
DEPRESSED BUTTON	FREE BUTTON	ACTION	MODEL NO.
CONTACTS			

THIS DRAWING IS A CONTROLLED DOCUMENT.		DWN TRU-D	11SEP96	<b>tyco</b> <b>Electronics</b>		Tyco Electronics Corporation Harrisburg, Pa 17105-3608	
DIMENSIONS: INCHES		CHK —	—	NAME  PUSH BUTTON SWITCH RIGHT ANGLE, (TP21**GRA* SERIES)			
		APVD —	—				
		PRODUCT SPEC —					
		APPLICATION SPEC —					
MATERIAL SEE SPECIFICATIONS		FINISH —	WEIGHT —	SIZE A2	CAGE CODE 00779	DRAWING NO C-1-1437571-8	RESTRICTED TO —
CUSTOMER DRAWING				SCALE 4:1	SHEET 1 of 1	REV A	

1-1437571-8

# Mouser Electronics

Authorized Distributor

Click to View Pricing, Inventory, Delivery & Lifecycle Information:

[TE Connectivity:](#)

[2-1437571-1](#)