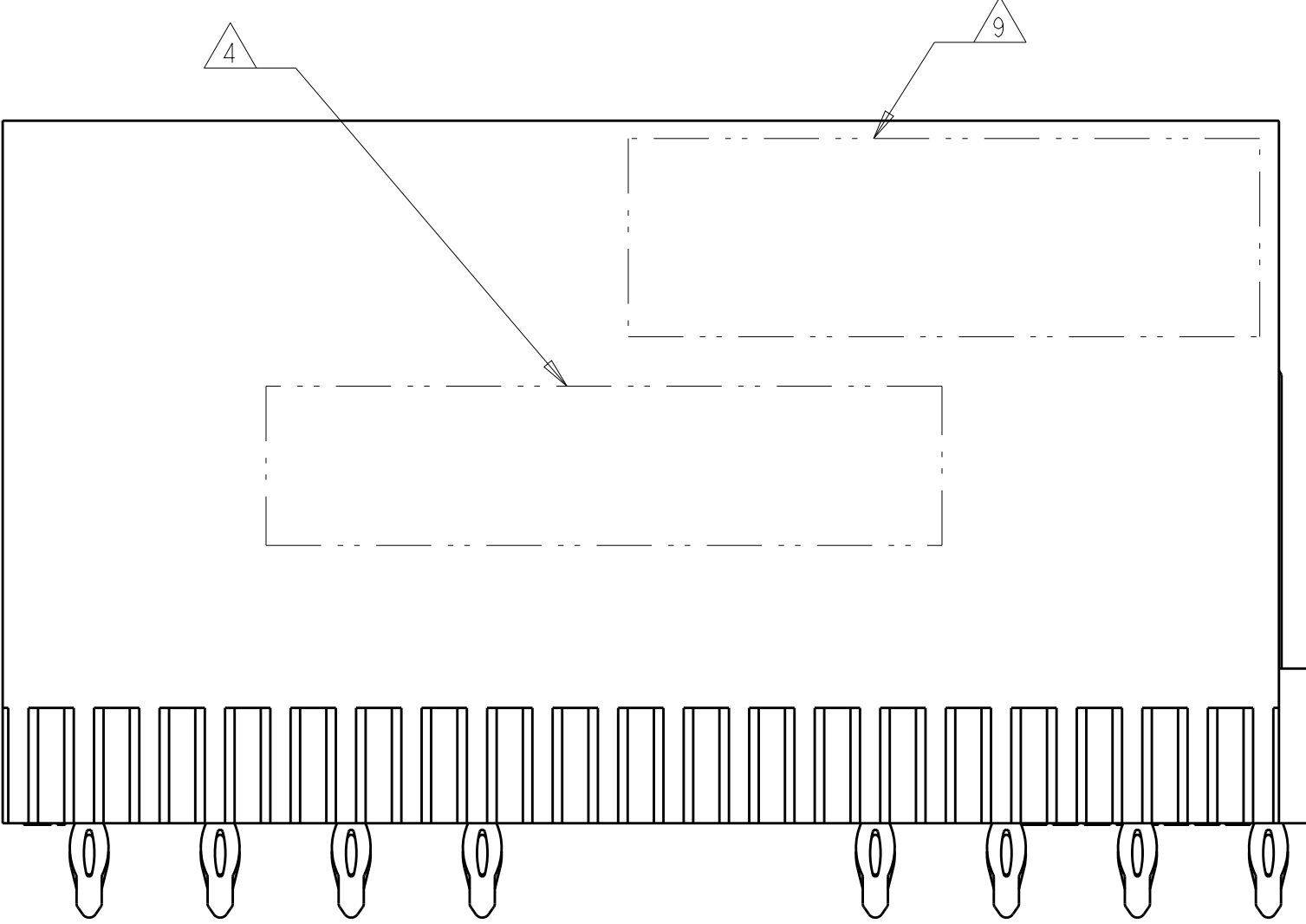
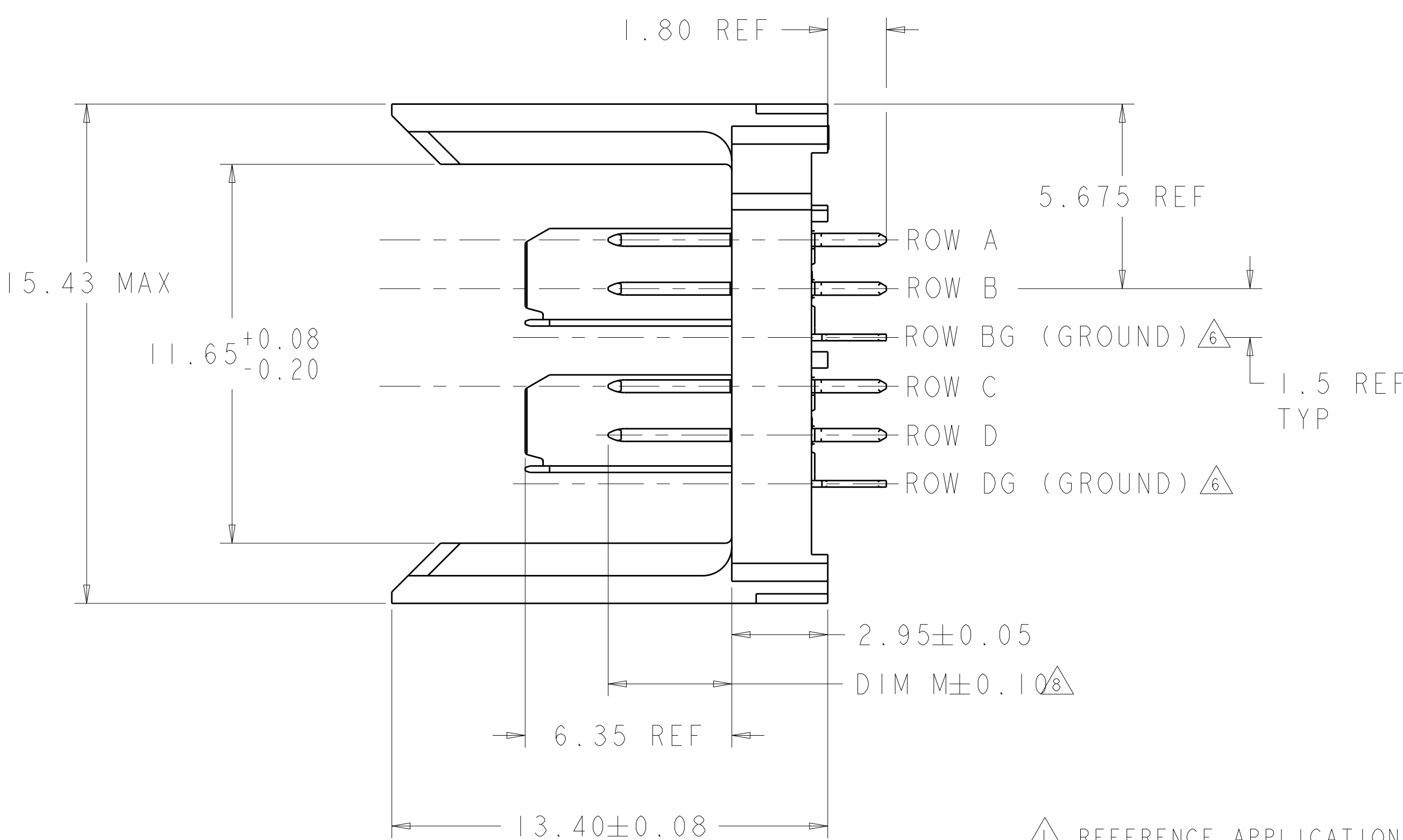
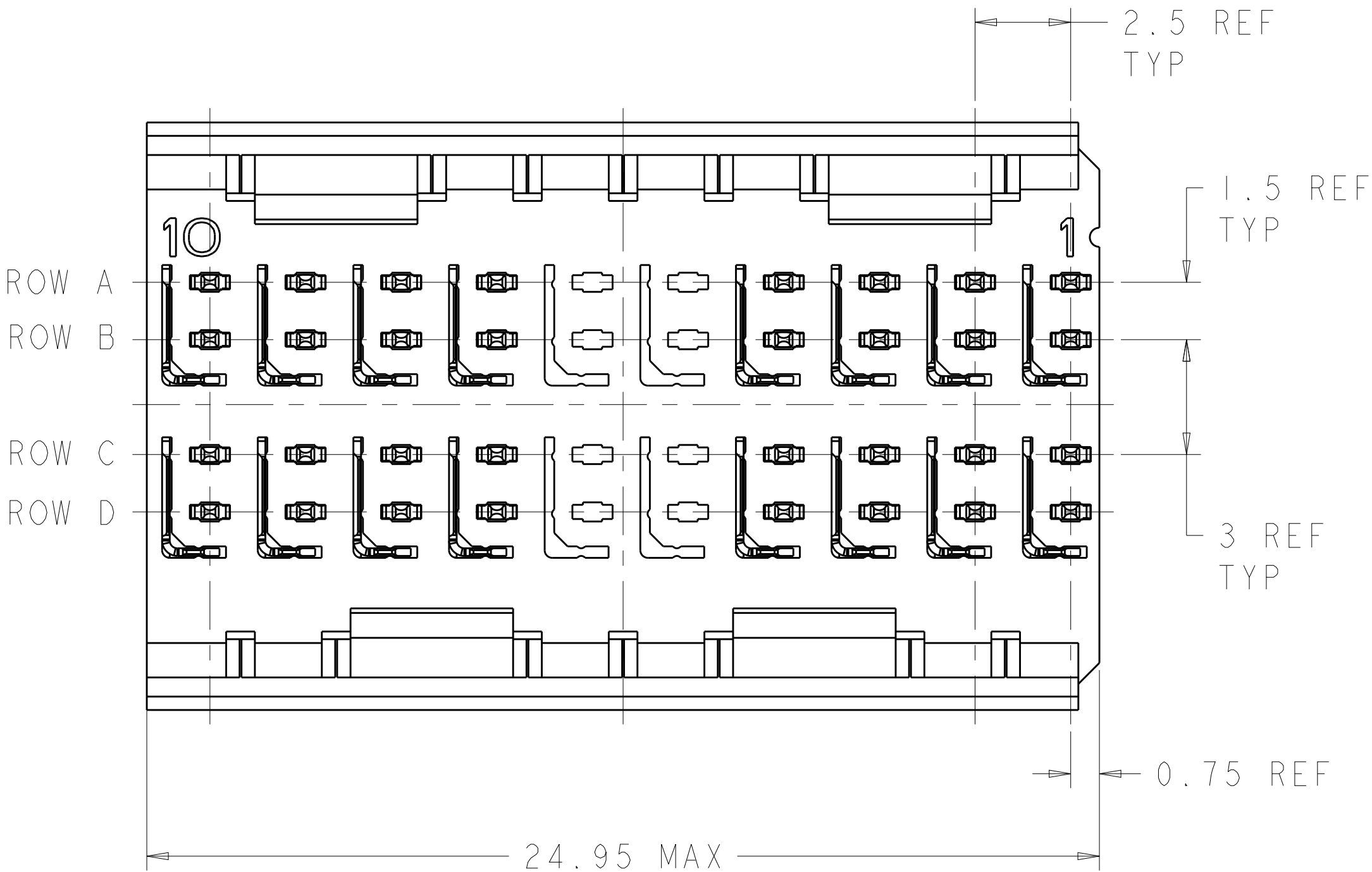


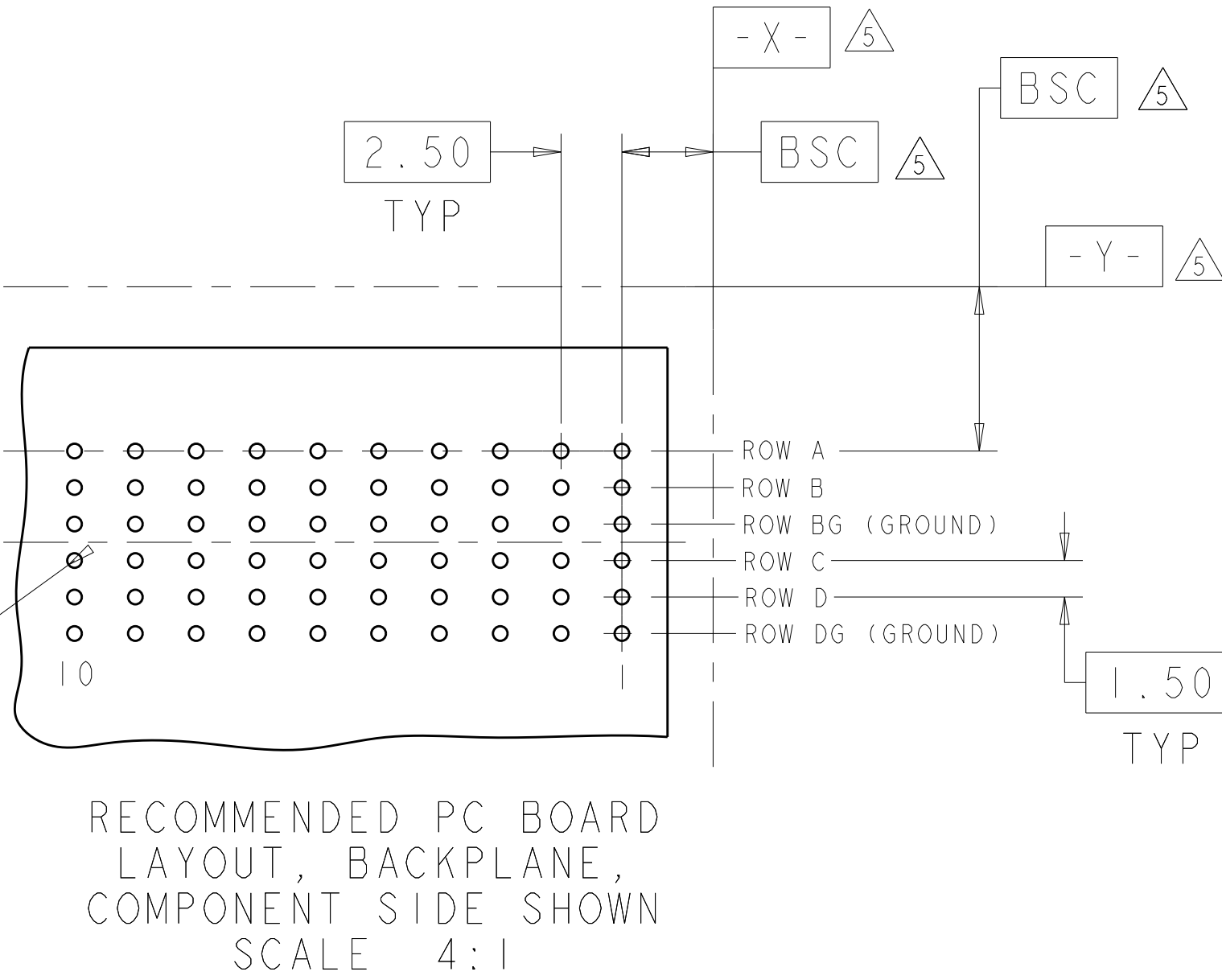
| LOC | | DIST | | REVISIONS | | | | |
|-----|-----|-------------|---------------------------|-----------|------|-----------|------|----|
| P | LTR | DESCRIPTION | | | DATE | DWN | APVD | |
| | | E | REVISED PER ECO-12-000118 | | | 17JAN12 | KH | DY |
| | | F | REVISED PER ECO-18-018129 | | | 01OCT2019 | AP | DS |
| | | | | | | | | |



- △ REFERENCE APPLICATION SPEC 114-13059 FOR RECOMMENDED PLATED THRU HOLE DIAMETER AND PLATING THICKNESSES.
- △ MATERIAL:
CONTACT AND SHIELD - PHOSPHOR BRONZE
HOUSING - GLASS FILLED POLYESTER. UL 94V-0.
- △ FINISH: SIGNAL AND GROUND CONTACTS:
MATING AREA: MEETS THE PERFORMANCE REQUIREMENTS OF PRODUCT SPECIFICATION 108-2055; BASED ON TELCORDIA GR-1217-CORE, APPLICATIONS IN UNCONTROLLED ENVIRONMENTS
COMPLIANT PIN AREA: 0.5 µm MIN BRIGHT TIN-LEAD OVER BASE PLATING
- △ CONNECTOR MARKED WITH PART NUMBER AND DATE CODE.
- △ DATUMS AND BASIC DIMENSIONS ESTABLISHED BY CUSTOMER.
- △ THE TWO GROUNDS IN EACH COLUMN ARE COMMONED.
7. CONTACT AREA LUBRICATED WITH BELLCORE APPROVED LUBRICANT. TECHNICAL REFERENCE: GR-1217-CORE, ISSUE 1, NOVEMBER 1995.
- △ REFER TO "CONTACT LAYOUT" CHART FOR SEQUENCING.
- △ TE OR TE CONNECTIVITY LOGO IS LOCATED.

| CONTACT LAYOUT | | | | | | | | | | | |
|--------------------|---------|---|---|---|---|---|---|---|---|---|---|
| A = 3.80mm (DIM M) | | | | | | | | | | | |
| B = 5.30mm (DIM M) | | | | | | | | | | | |
| G = GROUND | | | | | | | | | | | |
| ROWS | COLUMNS | | | | | | | | | | |
| | 10 | 9 | 8 | 7 | 6 | 5 | 4 | 3 | 2 | 1 | |
| | A | B | B | B | B | | | B | B | B | B |
| | B | B | B | B | B | | | B | B | B | B |
| | BG | G | G | G | G | | | G | G | G | G |
| | C | B | B | B | B | | | B | B | B | B |
| | D | B | B | B | B | | | B | B | B | B |
| | DG | G | G | G | G | | | G | G | G | G |

⌀ 0.05 (X) Y
ALL PLATED THRU HOLES



| | | | | | | | | | | | |
|--|--|--|--|--------------------------|--|--|--|---|--|--|--|
| THIS DRAWING IS A CONTROLLED DOCUMENT. | | | | DWN D. HUMBERT 30SEP2009 | | | | 1645532-1 | | | |
| DIMENSIONS: | | | | CHK J. EABY 30SEP2009 | | | | PART NUMBER | | | |
| mm | | | | APVD J. EABY 30SEP2009 | | | | | | | |
| TOLERANCES UNLESS OTHERWISE SPECIFIED: | | | | PRODUCT SPEC | | | | NAME | | | |
| 0 PLC ± | | | | APPLICATION SPEC | | | | HEADER ASSEMBLY, 2 PAIR, SELECTIVELY LOADED, 1.8mm TAIL, 25mm, HMZd | | | |
| 1 PLC ± | | | | SIZE | | | | RESTRICTED TO | | | |
| 2 PLC ± | | | | CAGE CODE | | | | A100779 | | | |
| 3 PLC ± | | | | DRAWING NO | | | | 1645532 | | | |
| 4 PLC ± | | | | WEIGHT | | | | SCALE 8:1 | | | |
| ANGLES | | | | CUSTOMER DRAWING | | | | SHEET 1 OF 1 | | | |
| FINISH | | | | | | | | REV F | | | |

Mouser Electronics

Authorized Distributor

Click to View Pricing, Inventory, Delivery & Lifecycle Information:

[TE Connectivity:](#)

[1645532-1](#)