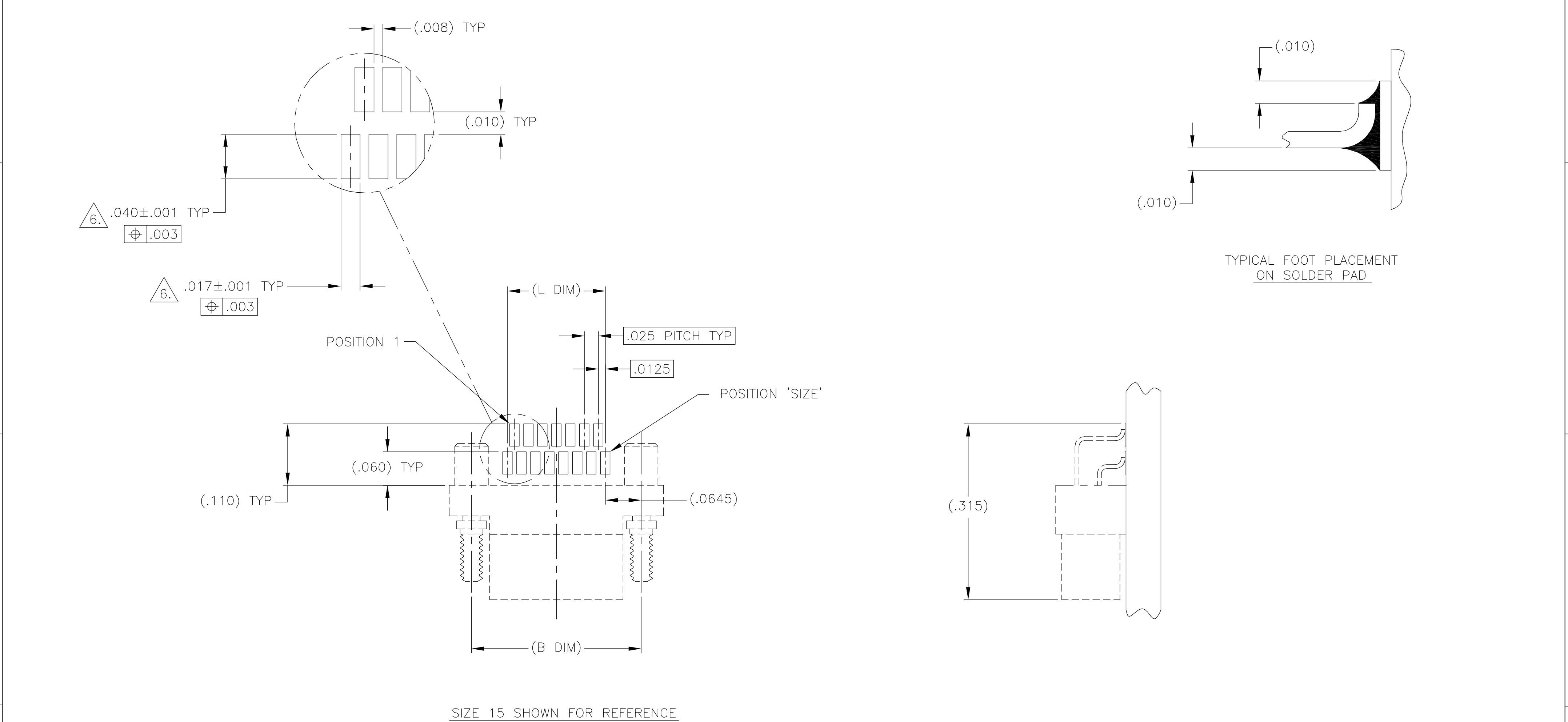


1. SHELL OPTIONS (TO BE SPECIFIED IN NANONICS PART NUMBER):
METAL: 6061-T6 ALUMINUM, ELECTROLESS NICKEL PLATED PER MIL-C-26074 OR GOLD PLATED PER MIL-G-45204
303 STAINLESS STEEL, PASSIVATED PER SAE-AMS-QQ-P-35
INSULATOR MATERIAL FOR ALL METAL SHELLS IS LIQUID CRYSTAL POLYMER (LCP) PER MIL-M-24519 OR PER ASTM D5138
PLASTIC: LIQUID CRYSTAL POLYMER (LCP) PER MIL-M-24519 OR PER ASTM D5138
2. STANDARD 1.00UNM CAPTIVE JACKSCREWS ARE SHOWN FOR REFERENCE ONLY AND MUST BE SPECIFIED IN THE NANONICS PART NUMBER WHEN REQUIRED. JACKSCREW MATERIAL IS 303 STAINLESS STEEL, PASSIVATED PER SAE-AMS-QQ-P-35, AND DRY LUBED PER DOD-L-85645. RETAINING RING IS 17-4 STAINLESS STEEL, PASSIVATED PER SAE-AMS-QQ-P-35. JACKSCREWS HAVE A .9mm HEX SOCKET HEAD. 1.20UNM JACKSCREWS ALSO AVAILABLE.
3. SMT LEADS ARE BeCu, TIN LEAD PLATED 60/40 COMPOSITION PER SAE-AMS-P-81728.
4. NANONICS TERMINATION CODE B2.
5. THIS DRAWING PREVIOUSLY IDENTIFIED AS NANONICS N10138/280

LOC	DIST	REVISIONS				
		P	LTR	DESCRIPTION	DATE	DWN
DF	D0		F	UPDATE PER 0H2Y-0164-04	12 MAY 04	CAS

SIZE	A DIM	(B DIM)	C DIM ±.0050	(L DIM)
09	.050	(.229)	.3085	(.100)
15	.0875	(.304)	.3835	(.175)
25	.150	(.429)	.5085	(.300)
37	.225	(.579)	.6585	(.450)
51	.3125	(.754)	.8335	(.625)
65	.400	(.929)	1.0085	(.800)

THIS DRAWING IS A CONTROLLED DOCUMENT.		DWN D. RYAN	16 JAN 98	tyco Electronics		Tyco Electronics Corporation					
DIMENSIONS: INCHES		CHK S. KAIN	20 DEC 99			Harrisburg, PA 17105					
	TOLERANCES UNLESS OTHERWISE SPECIFIED:		APVD M. STORRY	20 APR 01	NAME	PLUG ASSEMBLY, HORIZONTAL SURFACE MOUNT, TWO ROW DUALLOBE, PLASTIC OR METAL					
	0 PLC ± -		PRODUCT SPEC								
	1 PLC ± -		—								
	2 PLC ± .010		APPLICATION SPEC								
MATERIAL SEE NOTES	3 PLC ± .005		—		SIZE	CAGE CODE	DRAWING NO	RESTRICTED TO			
	4 PLC ± -		—		A2	00779	C=1589490				
	ANGLES ± 1		WEIGHT						8:1	SHEET 1 OF 2	REV F
	FINISH		—								
SEE NOTES		CUSTOMER DRAWING									



Mouser Electronics

Authorized Distributor

Click to View Pricing, Inventory, Delivery & Lifecycle Information:

[TE Connectivity:](#)

[1-1589490-2](#)