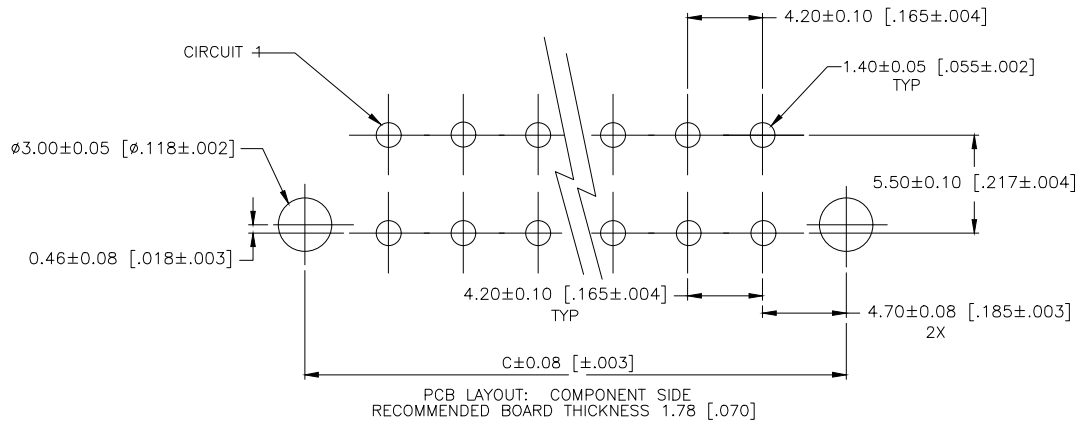
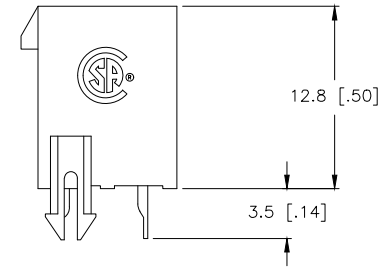
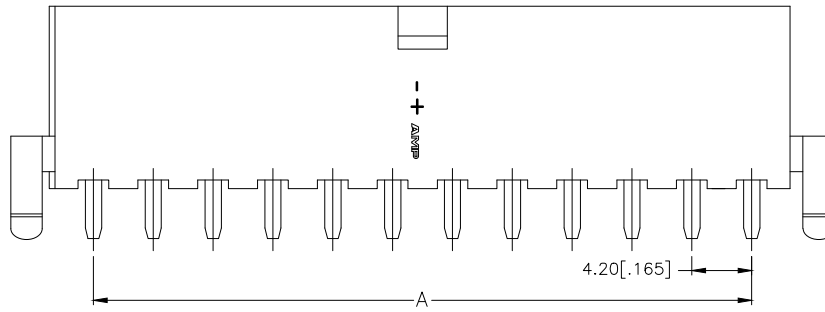
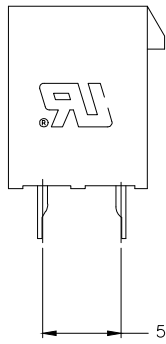
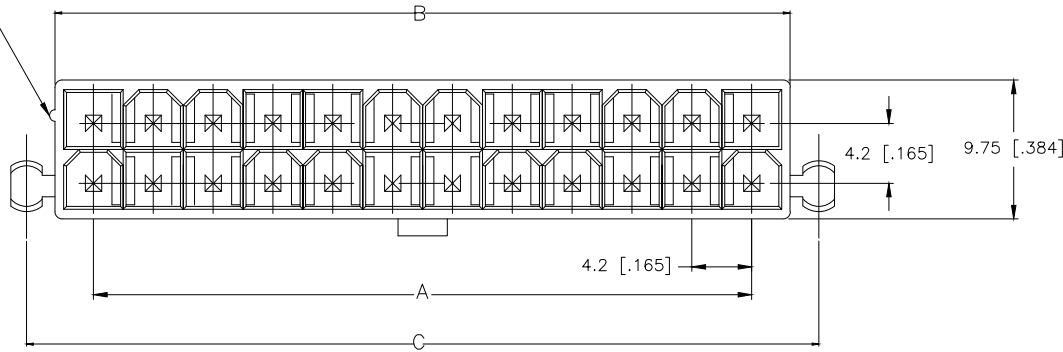


| LOC | DIST | REVISIONS | | | | |
|-----|------|-----------|-----|---------------------------|-----------|----------|
| | | P | LTR | DESCRIPTION | DATE | DWN APVD |
| CM | 00 | | B8 | REVISED PER ECO-19-018165 | 29NOV2019 | WH DZ |
| | | | | | | |
| | | | | | | |

POSITION 1
IDENTIFICATION
FEATURE



- 1 MATERIAL: HOUSING-NYLON, UL94V-0 (COLOR-NATURAL, COLOR OF PARTS MAY VARY) CONTACTS-0.25 [.010] THICK BRASS ALLOY.
- 2 CONTACT FINISH: 0.002032 [.000080] MIN BRIGHT TIN OVER 0.000381 [.000015] MIN NICKEL OVER ENTIRE CONTACT.
- 3 MATES WITH VAL-U-LOK(TM) RECEPTACLE HOUSINGS.
- 4 CONTACT FINISH: 0.00076 [.000030] MIN GOLD PLATE ON PIN MATING SURFACE, 0.003 [.00012] MIN TIN PLATE ON OTHER SURFACE, ALL OVER 0.00127 [.00005] MIN NICKEL BASE PLATE.

2-1586040-4 SHOWN

| | | | | |
|--|--|---------------------------|---|-----------------|
| THIS DRAWING IS A CONTROLLED DOCUMENT. | | DWN S. HOOVER 25-SEP-2002 | STE TE Connectivity | |
| | | CHK D. COLEY 25-SEP-2002 | | |
| | | APVD D. COLEY 25-SEP-2002 | NAME | |
| | | PRODUCT SPEC | VERTICAL HEADER WITH PEGS, WITH DRAIN HOLES VAL-U-LOK(TM) | |
| | | APPLICATION SPEC | | |
| | | 114-13172 | | |
| | | WEIGHT - | SIZE A2 | RESTRICTED TO - |
| | | CUSTOMER DRAWING | SCALE N/A | SHEET 1 of 2 |

4

3

2

1

THIS DRAWING IS UNPUBLISHED.
RELEASED FOR PUBLICATION
COPYRIGHT - By - ALL RIGHTS RESERVED.

| LOC | DIST | REVISIONS | | | | |
|-----|------|-----------|-----|-------------|------|----------|
| | | P | LTR | DESCRIPTION | DATE | DWN APVD |
| CM | 00 | - | - | SEE SHEET 1 | - | - |
| | | | | | | |
| | | | | | | |

| | | | | | |
|--------|-----|----------------------|-------------|--------------|-------------|
| | 24 | 46.2±0.25 [1.82±.01] | 51.6 [2.03] | 55.6 [2.19] | 5-1586040-4 |
| | 22 | 42.0±0.25 [1.65±.01] | 47.4 [1.87] | 51.4 [2.02] | 5-1586040-2 |
| | 20 | 37.8±0.25 [1.49±.01] | 43.2 [1.70] | 47.2 [1.86] | 5-1586040-0 |
| | 18 | 33.6±0.25 [1.32±.01] | 39.0 [1.54] | 43.0 [1.69] | 4-1586040-8 |
| | 16 | 29.4±0.25 [1.16±.01] | 34.8 [1.37] | 38.8 [1.53] | 4-1586040-6 |
| | 14 | 25.2±0.25 [.99±.01] | 30.6 [1.21] | 34.6 [1.36] | 4-1586040-4 |
| | 12 | 21.0±0.25 [.83±.01] | 26.4 [1.04] | 30.4 [1.20] | 4-1586040-2 |
| | 10 | 16.8±0.13 [.66±.005] | 22.2 [.87] | 26.2 [1.03] | 4-1586040-0 |
| | 8 | 12.6±0.13 [.50±.005] | 18.0 [.71] | 22.0 [1.03] | 3-1586040-8 |
| | 6 | 8.4±0.13 [.33±.005] | 13.8 [.54] | 17.8 [.70] | 3-1586040-6 |
| | 2 | | 5.4 [.21] | 9.4 [.37] | 3-1586040-2 |
| | 4 | 4.2±0.13 [.17±.005] | 9.6 [.38] | 13.6 [.54] | 3-1586040-4 |
| | 24 | 46.2±0.25 [1.82±.01] | 51.6 [2.03] | 55.6 [2.19] | 2-1586040-4 |
| | 22 | 42.0±0.25 [1.65±.01] | 47.4 [1.87] | 51.4 [2.02] | 2-1586040-2 |
| | 20 | 37.8±0.25 [1.49±.01] | 43.2 [1.70] | 47.2 [1.86] | 2-1586040-0 |
| | 18 | 33.6±0.25 [1.32±.01] | 39.0 [1.54] | 43.0 [1.69] | 1-1586040-8 |
| | 16 | 29.4±0.25 [1.16±.01] | 34.8 [1.37] | 38.8 [1.53] | 1-1586040-6 |
| | 14 | 25.2±0.25 [.99±.01] | 30.6 [1.21] | 34.6 [1.36] | 1-1586040-4 |
| | 12 | 21.0±0.25 [.83±.01] | 26.4 [1.04] | 30.4 [1.20] | 1-1586040-2 |
| | 10 | 16.8±0.13 [.66±.005] | 22.2 [.87] | 26.2 [1.03] | 1-1586040-0 |
| | 8 | 12.6±0.13 [.50±.005] | 18.0 [.71] | 22.0 [.87] | 1586040-8 |
| | 6 | 8.4±0.13 [.33±.005] | 13.8 [.54] | 17.8 [.70] | 1586040-6 |
| | 4 | 4.2±0.13 [.17±.005] | 9.6 [.38] | 13.6 [.54] | 1586040-4 |
| | 2 | | 5.4 [.21] | 9.4 [.37] | 1586040-2 |
| FINISH | POS | A | B±0.25[.01] | C±0.38[.015] | PART NUMBER |

| | | | | | |
|--|--|--|--|--------------------------------|--|
| THIS DRAWING IS A CONTROLLED DOCUMENT. | | DWN S. HOOVER 25-SEP-2002 | | TE Connectivity | |
| DIMENSIONS: mm [INCHES] | | CHK D. COLEY 25-SEP-2002 | | | |
| | | TOLERANCES UNLESS OTHERWISE SPECIFIED: | | APVD D. COLEY 25-SEP-2002 NAME | |
| | | 0 PLC ± | | PRODUCT SPEC | |
| | | 1 PLC ± 0.5 [.02] | | 108-2112 | |
| | | 2 PLC ± 0.25 [.010] | | APPLICATION SPEC | |
| 3 PLC ± | | 114-13172 | | SIZE A2 | |
| 4 PLC ± | | WEIGHT - | | CAGE CODE 00779 | |
| ANGLES ± | | CUSTOMER DRAWING | | DRAWING NO C=1586040 | |
| MATERIAL 1 | | FINISH SEE TABLE | | RESTRICTED TO - | |
| | | | | SCALE N/A SHEET 2 of 2 REV B8 | |

1586040

Mouser Electronics

Authorized Distributor

Click to View Pricing, Inventory, Delivery & Lifecycle Information:

[TE Connectivity:](#)

[1-1586040-0](#)