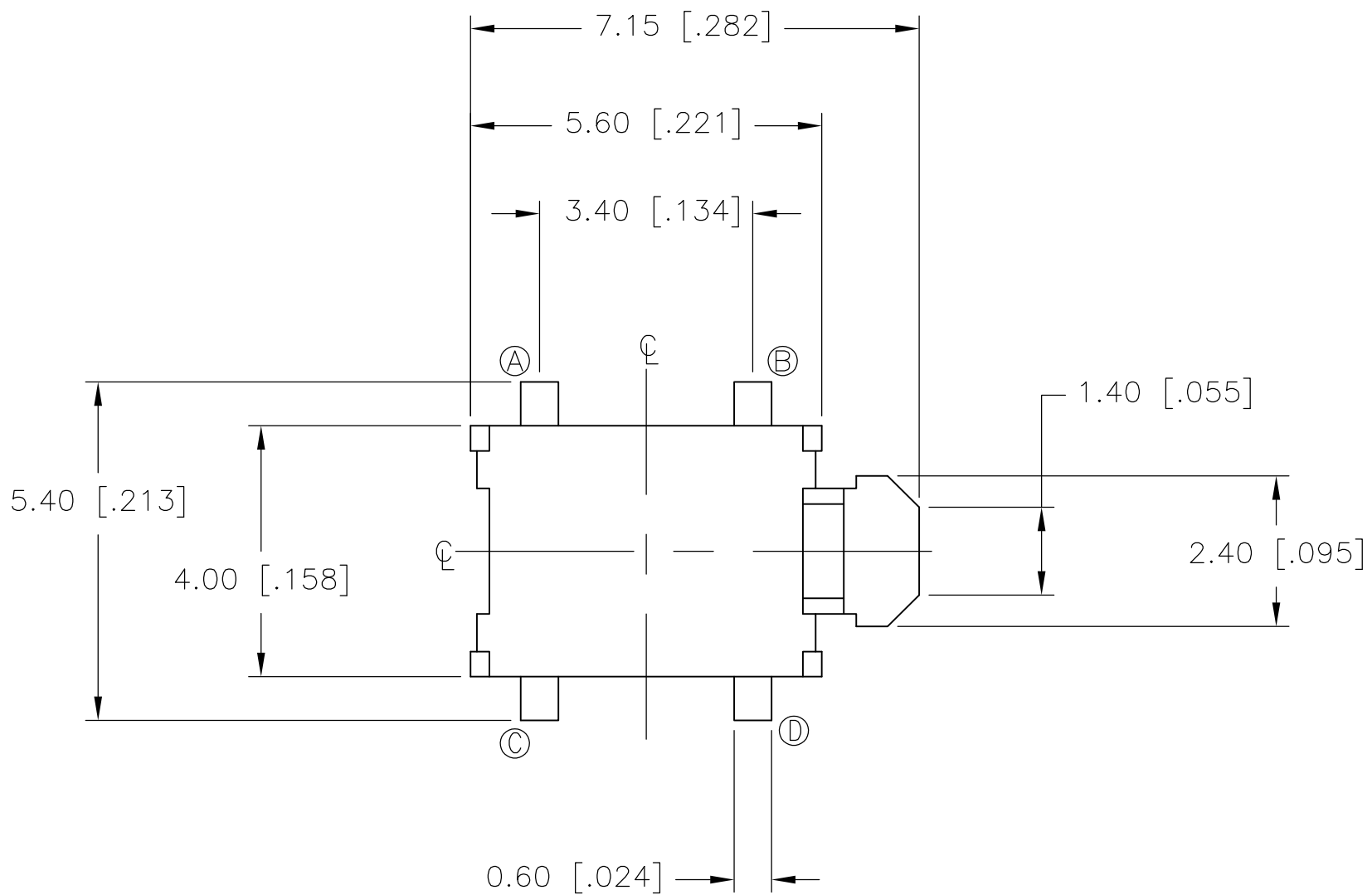
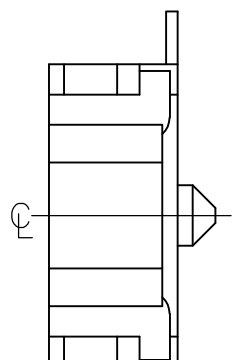


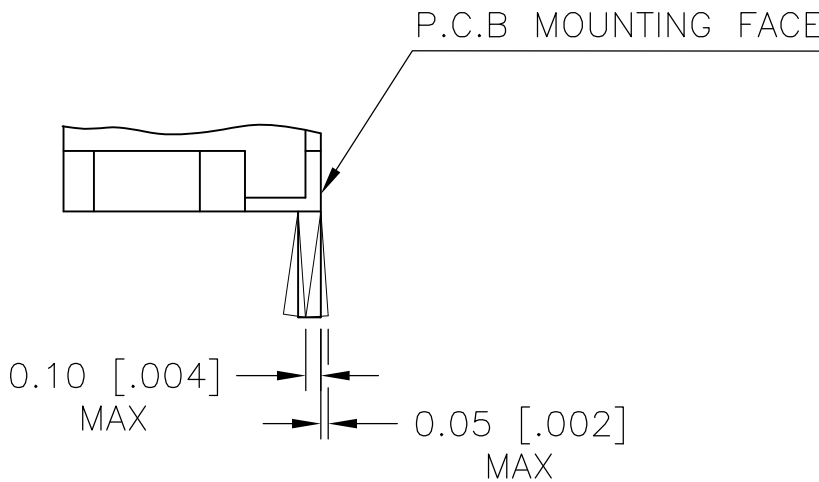
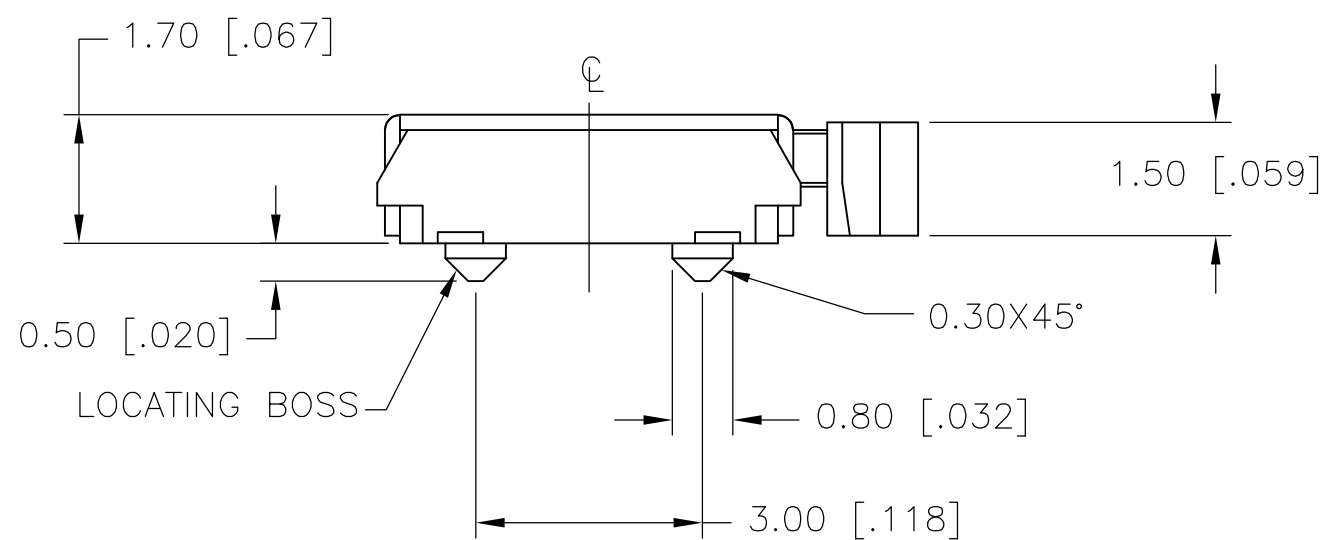
D



0.15±0.05 [.006±.002]

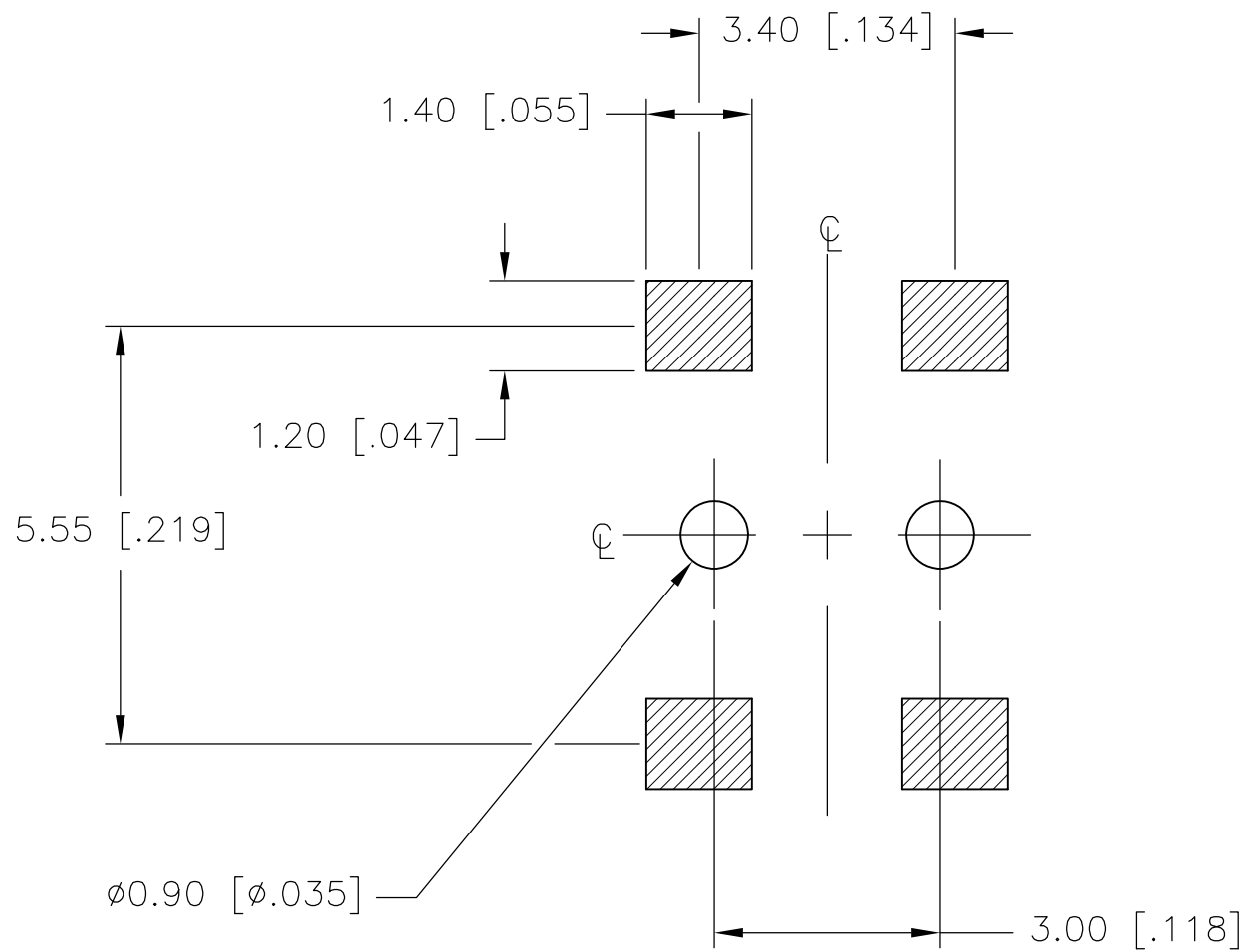


C

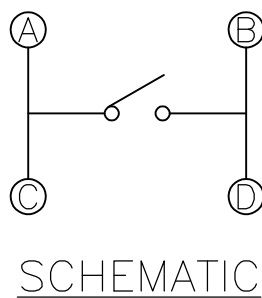


TERMINAL DETAIL
SCALE 20:1

B



RECOMMENDED LAND PATTERN



A

SPECIFICATIONS:

MATERIALS:

COVER: STAINLESS STEEL
ACTUATOR: LCP, BLACK
CASE: LCP, SEE P/N TABLE FOR FINISH
STOP: LCP, BLACK
CONTACT PLATE: STAINLESS STEEL, SILVER PLATE
TERMINAL: COPPER ALLOY, SILVER OVER NICKEL PLATE

ELECTRICAL:

CONTACT RATING, 50MA@12VDC, PER EIA-448, METHOD 6
INITIAL CONTACT RESISTANCE, 500 MILLIOHMS MAX, PER EIA-364-23B, EACH POSITION
INSULATION RESISTANCE, 100 MEGOHM MIN. PER EIA-364-21C EACH POSITION
DIELECTRIC STRENGTH, 250 V AC FOR 1 MINUTE PER EIA-364-20B, CONDITION 1, EACH POSITION.
BOUNCE, 10MILLISECOND MAX

MECHANICAL:

ACTUATION FORCE, 220 +/-50 GF
ACTUATION TRAVEL, .25 +/-0.15
LIFE EXPECTANCY, 50,000 CYCLES (120-180 CYCLES PER MINUTE), PER EIA-448 METHODS 8 AND 9
VIBRATION, PER EIA 364-28D, CONDITION VII, LEVEL E
MECHANICAL SHOCK, PER EIA-364-27C, CONDITION A

ENVIRONMENTAL:

OPERATING TEMPERATURE, -20 TO +70 DEGREES C, PER EIA-448, METHOD 10
STORAGE TEMPERATURE, -30 TO +80 DEGREES C
HUMIDITY AND TEMPERATURE CYCLING PER EIA-364-31B, METHOD III
THERMAL SHOCK, PER EIA-364-32C, -30 TO +80 DEGREES C
SOLDERABILITY, PER EIA-364-52, CLASS 2, CATEGORY 1, TEMP, 245 DEGREES C MAX, TIME, 2.5 SECONDS MAX, 95% MINIMUM COVERAGE
RESISTANCE TO SOLDER HEAT PER 109-201, CONDITION B

NOTES:

- ALL MATERIALS AND FINISHES SHALL COMPLY WITH EU DIRECTIVE 2002/95/EC OF 27JAN2003 (ROHS).
- PACKAGING: TAPE AND REEL PACKAGING PER EIA 481.

3300	8MM	16MM	BLACK	W BOSS	T&R	1571262-4
N/A	N/A	N/A	BLACK	W BOSS	BULK	1571262-3
3300	8MM	16MM	WHITE	W/O BOSS	T&R	1571262-2
N/A	N/A	N/A	WHITE	W/O BOSS	BULK	1571262-1
QTY/REEL	PITCH	TAPE WIDTH	CASE COLOR	FEATURES	PACKAGING	PART NO.

THIS DRAWING IS A CONTROLLED DOCUMENT.		DWN M. BINNER 11APR02	TE Connectivity			
DIMENSIONS: mm [INCHES]		CHK M. SERVER 16JAN06				
TOLERANCES UNLESS OTHERWISE SPECIFIED:		APPROD M. SERVER 16JAN06	NAME			
0 PLC ± - 1 PLC ± - 2 PLC ± 0.30 [.012] 3 PLC ± - 4 PLC ± - ANGLES ± -		PRODUCT SPEC	TACTILE SWITCH, SIDE ACTUATED, SMT			
MATERIAL SEE SPECIFICATIONS		FINISH -				
WEIGHT -		SIZE A1	CAGE CODE 00779		DRAWING NO. 1571262	RESTRICTED TO -
CUSTOMER DRAWING		SCALE 10:1	SHEET 1	OF 1	REV C1	

Mouser Electronics

Authorized Distributor

Click to View Pricing, Inventory, Delivery & Lifecycle Information:

[TE Connectivity:](#)

[1571262-1](#)