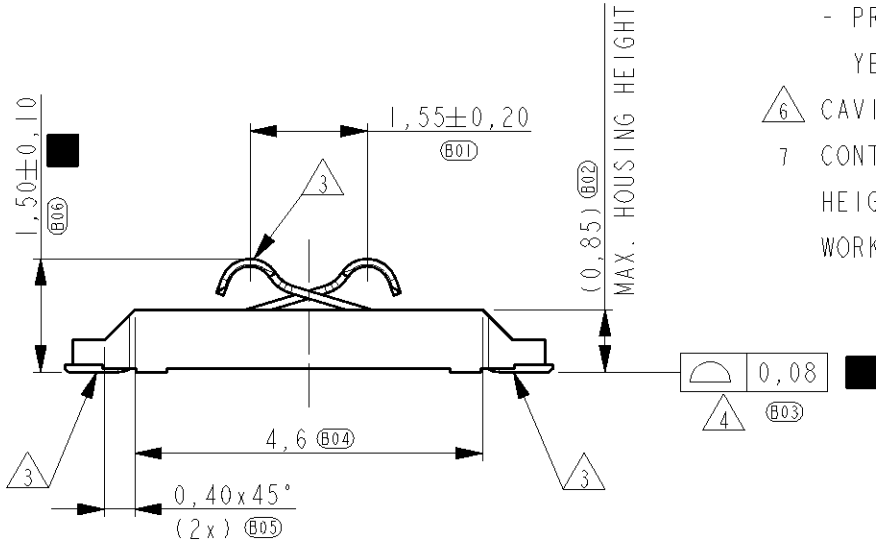
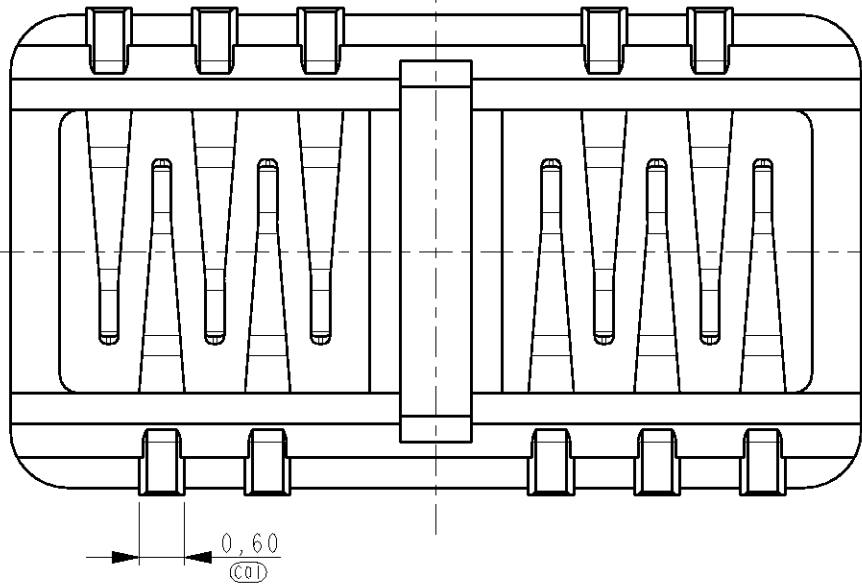
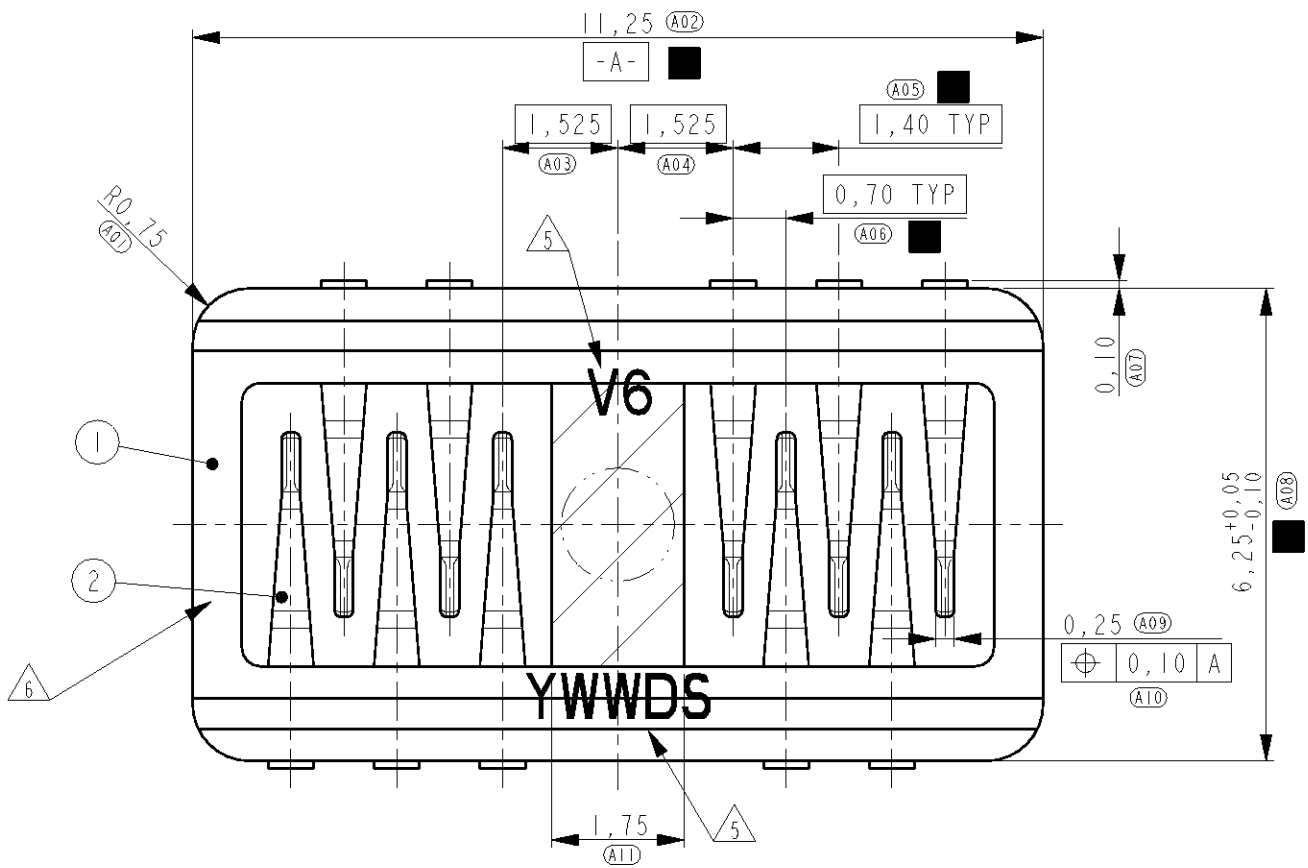


2		1					
LOC	DIST	REVISIONS					
H	-	P	LTR	DESCRIPTION	DATE	DWN	APVD
			13	TOLERANCE CHANGE DIM A08	12APR2010	PW	JD
			A	ECR-10-016181	29JUL2010	PW	JD

NOTES:

- 1 P.N. AS SHOWN 1551246-2.
- 2 DRAWING REPRESENTS PART VERSION V6.
- 3 PLATING: 1,27µm MIN. NICKEL ALL OVER,
0,5µm MIN GOLD ON CONTACT POINTS,
GOLD FLASH ON SOLDER TAILS.
- 4 COPLANARITY OF SOLDER SURFACES 0,08 MAX.
- 5 LASER MARKING:
- PART VERSION ('V6'),
- PRODUCTION DATE CODE ('YWWDS'
YEAR, WEEK, DAY + DAY/NIGHT SHIFT)
- 6 CAVITY ID, RECESSED.
- 7 CONTACT NORMAL FORCE 0,3N AT NOMINAL WORKING
HEIGHT OF 0,95mm MEASURED FROM THE PWB.
WORKING RANGE IS ±0,10mm (0,85 - 1,05mm)



2	CONTACT	COPPER ALLOY	GOLD PLATED
1	HOUSING	PLASTIC, GF	-
ITEM NO.	DESCRIPTION	MATERIAL	FINISH

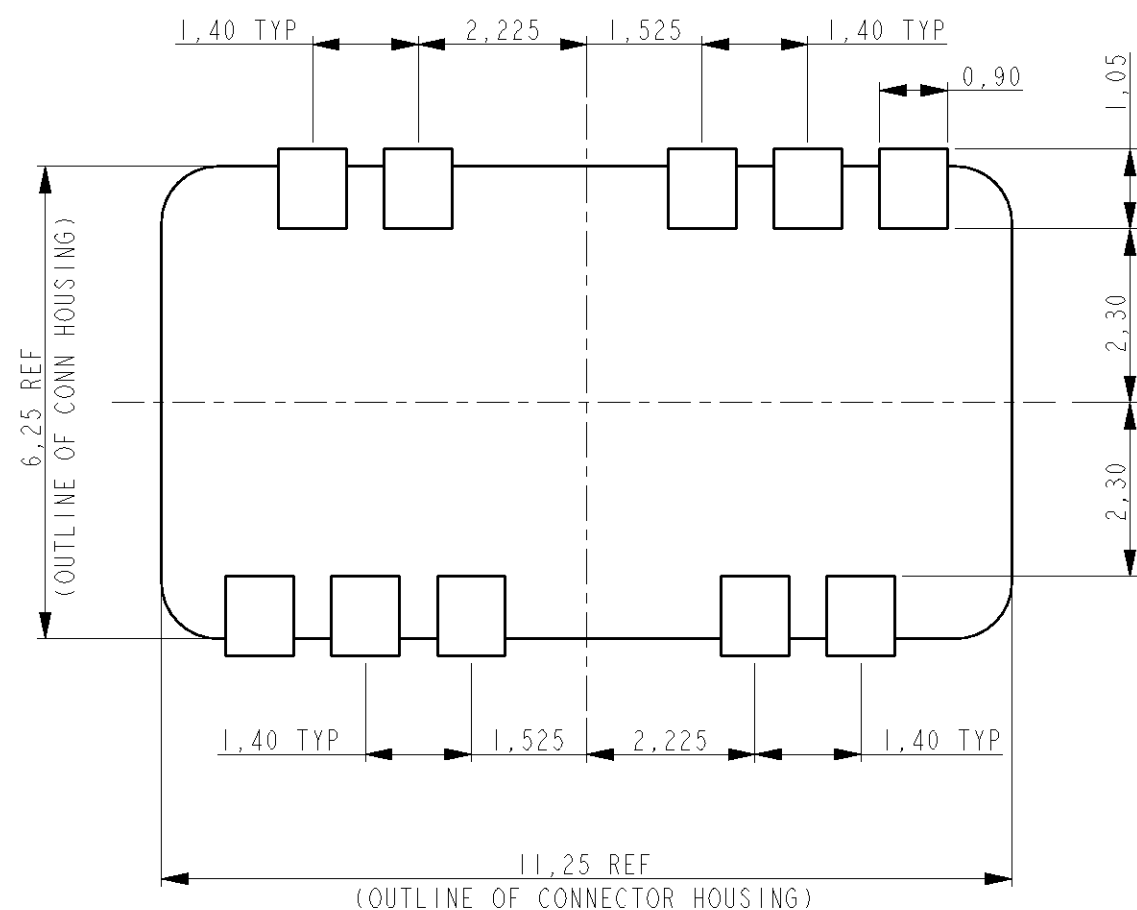
THIS DRAWING IS A CONTROLLED DOCUMENT FOR TYCO ELECTRONICS CORPORATION IT IS SUBJECT TO CHANGE AND THE CONTROLLING ENGINEERING ORGANIZATION SHOULD BE CONTACTED FOR THE LATEST REVISION.		DWN 07-May-09 P. Willems CHK - M. Gosselink APVD - J. Dittner PRODUCT SPEC 108-19392 APPLICATION SPEC - WEIGHT 0,055 gr		Tyco Electronics Corporation 's-Hertogenbosch, Nederland NAME 10 POS DOUBLE ROW B+B CONNECTOR - - SIZE A3 CAGE CODE 00779 DRAWING NO C=1551246 RESTRICTED TO -	
DIMENSIONS: mm 		TOLERANCES UNLESS OTHERWISE SPECIFIED: 0 PLC ±0,2 1 PLC ±0,1 2 PLC ±0,05 3 PLC ±- 4 PLC ±- ANGLES ±- FINISH -		CUSTOMER DRAWING SCALE 10:1 SHEET 1 OF 3 REV A	

THIS DRAWING IS UNPUBLISHED.

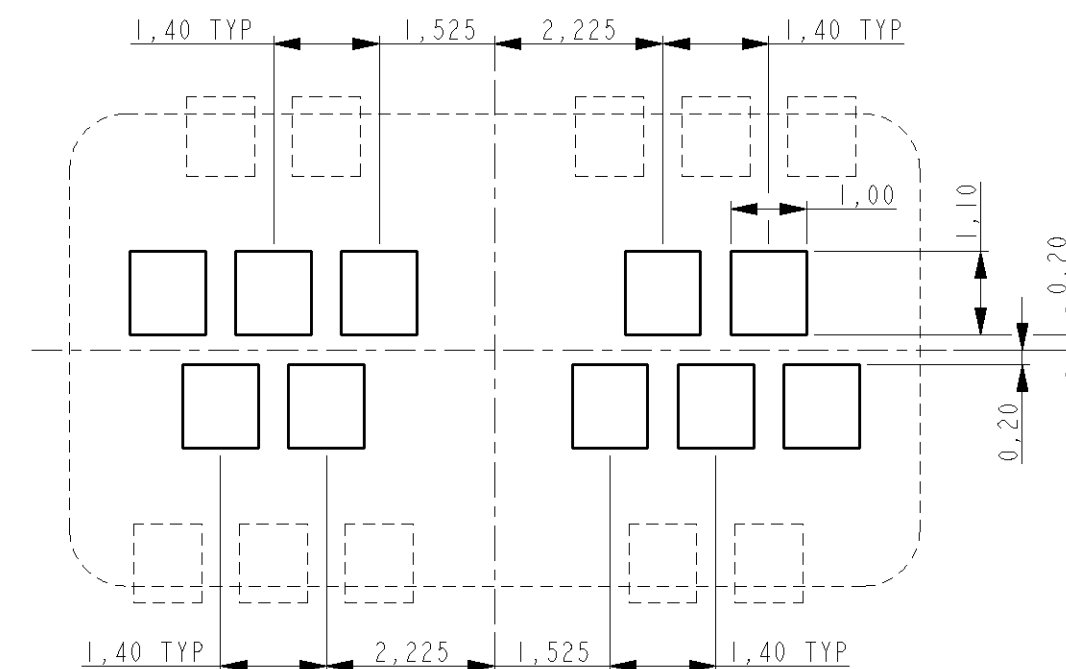
RELEASED FOR PUBLICATION

© COPYRIGHT - BY TYCO ELECTRONICS CORPORATION. ALL RIGHTS RESERVED.

LOC	DIST	REVISIONS				
		P	LTR	DESCRIPTION	DATE	DWN
H	-		-	SEE SHEET 1	-	-



RECOMMENDED PWB LAY-OUT
PWB SOLDER SIDE

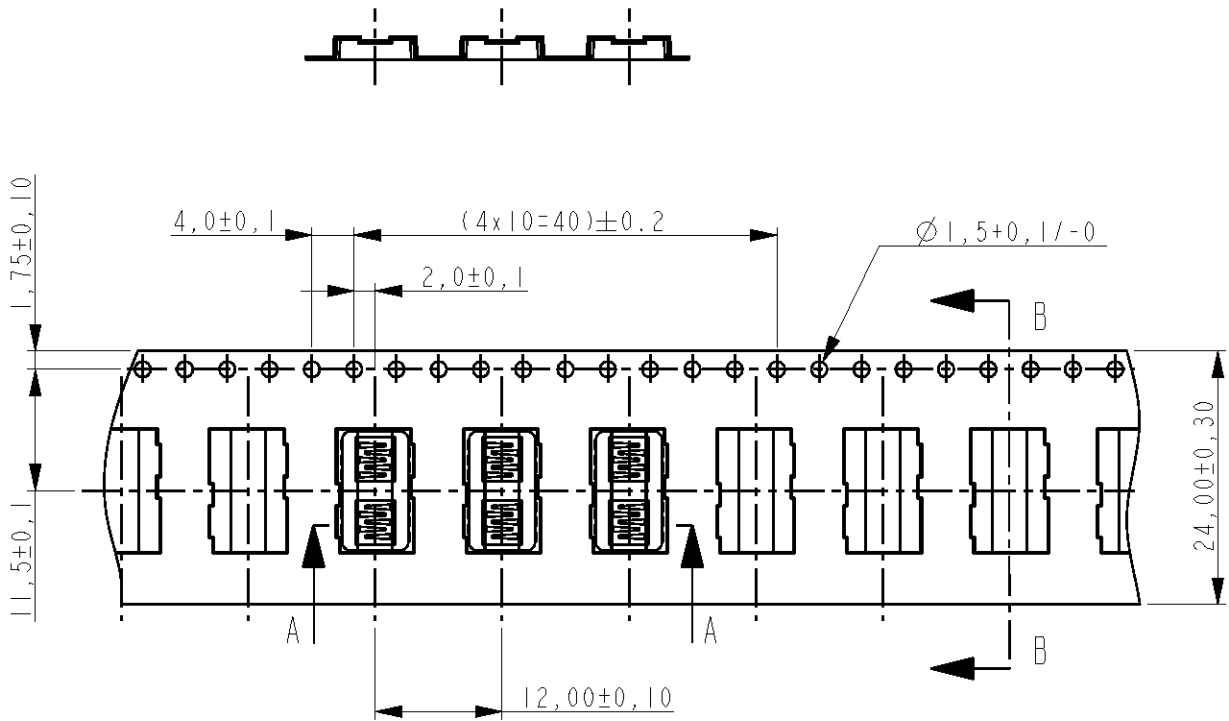


RECOMMENDED PWB LAY-OUT
PWB CONTACT SIDE

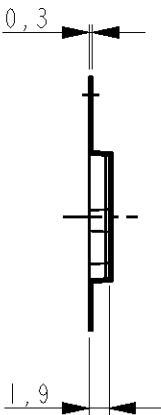
THIS DRAWING IS A CONTROLLED DOCUMENT FOR TYCO ELECTRONICS CORPORATION IT IS SUBJECT TO CHANGE AND THE CONTROLLING ENGINEERING ORGANIZATION SHOULD BE CONTACTED FOR THE LATEST REVISION.		DWN 07-May-09 P. Willems		Tyco Electronics Corporation 's-Hertogenbosch, Nederland	
DIMENSIONS: mm		CHK M. Gosselink		NAME 10 POS DOUBLE ROW B+B CONNECTOR	
		APVD J. Dittner		-	
		PRODUCT SPEC 108-19392		-	
MATERIAL -		FINISH -		RESTRICTED TO -	
		WEIGHT 0,055 gr		SIZE A3 CAGE CODE 00779 DRAWING NO C=1551246	
		CUSTOMER DRAWING		SCALE 10:1 SHEET 2 OF 3 REV A	

LOC	DIST	REVISIONS				
		P	LTR	DESCRIPTION	DATE	APVD
H	-		-	SEE SHEET 1	-	-

SECTION A-A


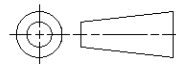


SECTION B-B



UNREEL DIRECTION →

- NOTES:
- 1 REEL DIMENSIONS: 330x100x32,4mm
 - 2 QTY PER REEL: 2500pcs

THIS DRAWING IS A CONTROLLED DOCUMENT FOR TYCO ELECTRONICS CORPORATION IT IS SUBJECT TO CHANGE AND THE CONTROLLING ENGINEERING ORGANIZATION SHOULD BE CONTACTED FOR THE LATEST REVISION.		DWN 07-May-09 P. Willems		 Tyco Electronics Tyco Electronics Corporation 's-Hertogenbosch, Nederland	
DIMENSIONS: mm		CHK - M. Gosselink			
		APVD - J. Dittner		NAME 10 POS DOUBLE ROW B+B CONNECTOR - -	
		PRODUCT SPEC 108-19392			
MATERIAL -		APPLICATION SPEC -		SIZE A3	
		WEIGHT 0,055 gr			
FINISH -		CUSTOMER DRAWING		SCALE 10:1	
				SHEET 3 OF 3	
				REV A	

Mouser Electronics

Authorized Distributor

Click to View Pricing, Inventory, Delivery & Lifecycle Information:

[TE Connectivity:](#)

[1551246-2](#)