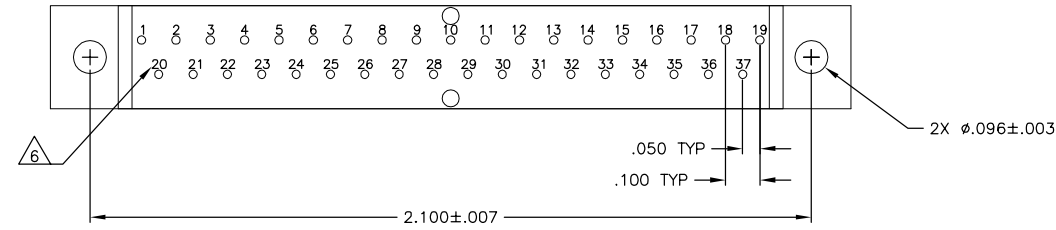
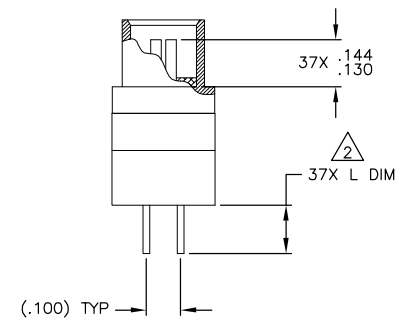
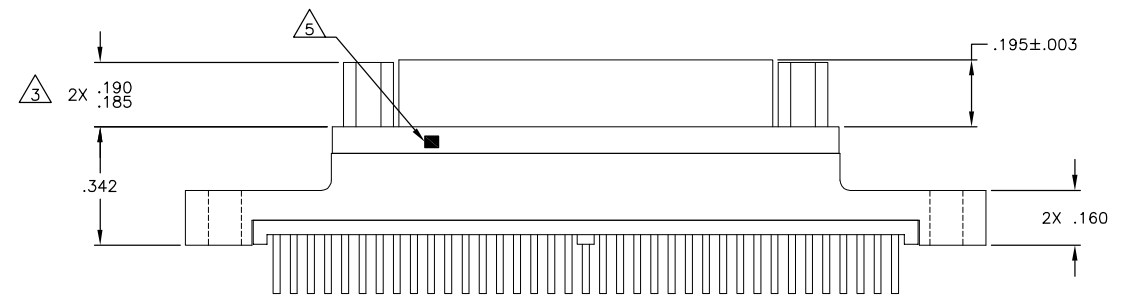
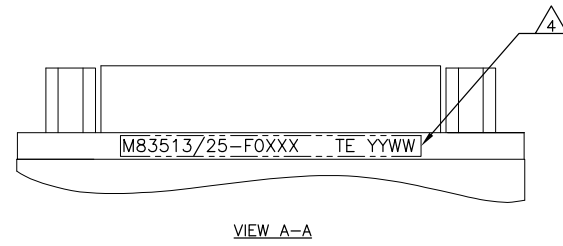
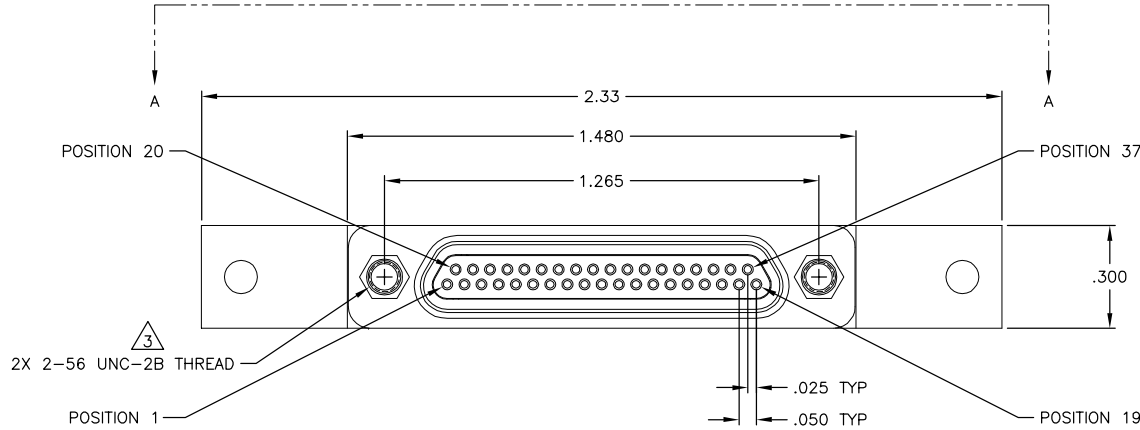


THIS DRAWING IS UNPUBLISHED. RELEASED FOR PUBLICATION  
 (C) COPYRIGHT -- By -- ALL RIGHTS RESERVED.

REVISIONS				
P	LTR	DESCRIPTION	DATE	DWN APVD
B		REV PER ECO 18-005353	5-3-18	CT AS



SEE SHEET 2 FOR NOTES

THIS DRAWING IS A CONTROLLED DOCUMENT.		DWN C SCHOLL	2 JUL 12	 TE Connectivity
DIMENSIONS: INCHES		DWG M STORREY	2 JUL 12	
TOLERANCES UNLESS OTHERWISE SPECIFIED: 0 PLC ± - 1 PLC ± - 2 PLC ± .010 3 PLC ± .005 4 PLC ± - ANGLES ± 1°		NAME RECEPTACLE ASSY,MCKS,ST1 STRAIGHT TERMINATION,PCB MOUNT,2 ROW, PER MIL-DTL-83513/25		RESTRICTED TO
MATERIAL SEE NOTES		FINISH SEE NOTES	WEIGHT -	SIZE A2
SEE NOTES		DRAWING NO 98278		1532279
SEE NOTES		CUSTOMER DRAWING		SCALE 4:1 SHEET 1 of 2 REV B


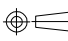
1532279

THIS DRAWING IS UNPUBLISHED. RELEASED FOR PUBLICATION  
 © COPYRIGHT - By - ALL RIGHTS RESERVED.

REVISIONS					
P	LTR	DESCRIPTION	DATE	DWN	APVD
-	-	SEE SHEET 1	-	-	-

TE PART NUMBER	MIL-DTL-83513 PIN	MCKS DESCRIPTION	SHELL FINISH $\triangle 1$	HARDWARE $\triangle 3$	L DIM $\pm .015$
1532279-1	M83513/25-F01CN	MCKS-C2-B-37SST1	CADMIUM	NONE	.109
1532279-2	M83513/25-F01CP	MCKS-C2-P-37SST1	CADMIUM	JACKPOSTS	.109
1532279-3	M83513/25-F01NN	MCKS-N1-B-37SST1	NICKEL	NONE	.109
1532279-4	M83513/25-F01NP	MCKS-N1-P-37SST1	NICKEL	JACKPOSTS	.109
1532279-5	M83513/25-F02CN	MCKS-C2-B-37SST1A	CADMIUM	NONE	.140
1532279-6	M83513/25-F02CP	MCKS-C2-P-37SST1A	CADMIUM	JACKPOSTS	.140
1532279-7	M83513/25-F02NN	MCKS-N1-B-37SST1A	NICKEL	NONE	.140
1532279-8	M83513/25-F02NP	MCKS-N1-P-37SST1A	NICKEL	JACKPOSTS	.140
1532279-9	M83513/25-F03CN	MCKS-C2-B-37SST1B	CADMIUM	NONE	.172
1-1532279-0	M83513/25-F03CP	MCKS-C2-P-37SST1B	CADMIUM	JACKPOSTS	.172
1-1532279-1	M83513/25-F03NN	MCKS-N1-B-37SST1B	NICKEL	NONE	.172
1-1532279-2	M83513/25-F03NP	MCKS-N1-P-37SST1B	NICKEL	JACKPOSTS	.172

- $\triangle 1$  SHELL MATERIAL: 6061-T6 ALUMINUM  
 FINISH OPTIONS:  
 ELECTROLESS NICKEL PLATED PER SAE-AMS-C-26074 OR SAE AMS 2404 OR CADMIUM PLATED PER SAE-AMS-QQ-P-416 WITH YELLOW CHROMATE  
 INSULATOR: LIQUID CRYSTAL POLYMER (LCP)  
 HARDWARE: 300 SERIES STAINLESS STEEL  
 TB BOX: POLYPHENYLENE SULFIDE (PPS) AND EPOXY POTTING
- $\triangle 2$  TERMINATION: 24AWG GOLD PLATED COPPER WIRE, Sn63Pb37 SOLDER DIPPED UP TO MOUNTING SURFACE AT A MINIMUM
- $\triangle 3$  JACKPOST HARDWARE SHALL BE PERMANENTLY INSTALLED AS SHOWN WHEN REQUIRED BY THE MIL PIN. JACKPOST DIMENSIONS AND REQUIREMENTS ARE DEFINED IN MIL-DTL-83513/5.
- $\triangle 4$  CONNECTOR SHALL BE MARKED IN ACCORDANCE WITH METHOD 1 OF MIL-STD-1285. MARKING SHALL CONTAIN THE MILITARY PIN, CAGE CODE (OR TE), AND DATE CODE. EXAMPLE: M83513/25-FOXXX TE YYWW (WHERE XXX IS PART OF THE PIN SHOWN IN THE "MIL-DTL-83513 PIN" COLUMN OF THE PART NUMBER TABLE, AND YYWW IS THE DATE CODE). THE MARKING MUST BE PRINTED ON THE FLANGE. TEXT HEIGHT SHALL BE .035 INCH MINIMUM.
- $\triangle 5$  POSITION 1 SHALL BE INDICATED BY AN IDENTIFIABLE MARK, LOCATED APPROXIMATELY AS SHOWN ON THE POSITION 1 SIDE OF THE CONNECTOR FLANGE. THIS MARK SHALL BE INCLUDED AS PART OF THE PART MARKING INFORMATION.
- $\triangle 6$  TERMINAL IDENTIFICATION NUMBERS AS SHOWN DO NOT ACTUALLY APPEAR ON THE PART (FOR IDENTIFICATION ONLY)
- 7 ALL REQUIREMENTS CONFORM TO MIL-DTL-83513/25. SEE MIL-SPEC FOR DETAILED INTERFACE DIMENSIONS AND SUGGESTED PCB LAYOUTS

THIS DRAWING IS A CONTROLLED DOCUMENT.		DWN C SCHOLL	2 JUL 12	 TE Connectivity
DIMENSIONS: INCHES		APVD M STORREY	2 JUL 12	
		TOLERANCES UNLESS OTHERWISE SPECIFIED: 0 PLC ± - 1 PLC ± - 2 PLC ± .010 3 PLC ± .005 4 PLC ± - ± .1* ANGLES ± - ± .1*		NAME RECEPTACLE ASSY,MCKS,ST1 STRAIGHT TERMINATION,PCB MOUNT,2 ROW, PER MIL-DTL-83513/25
MATERIAL	FINISH	WEIGHT	RESTRICTED TO	SIZE A2
SEE NOTES	SEE NOTES	CUSTOMER DRAWING	SCALE	CAGE CODE 98278
		2 of 2	REV	DRAWING NO 1532279
		4:1	B	

1532279

# Mouser Electronics

Authorized Distributor

Click to View Pricing, Inventory, Delivery & Lifecycle Information:

[TE Connectivity:](#)

[1-1532279-1](#)