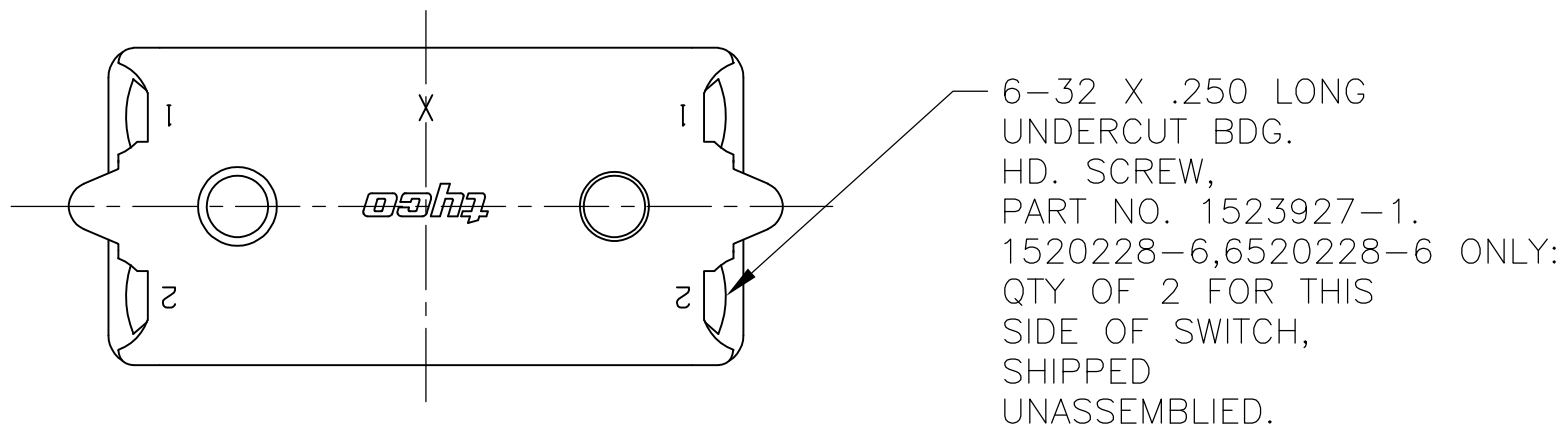
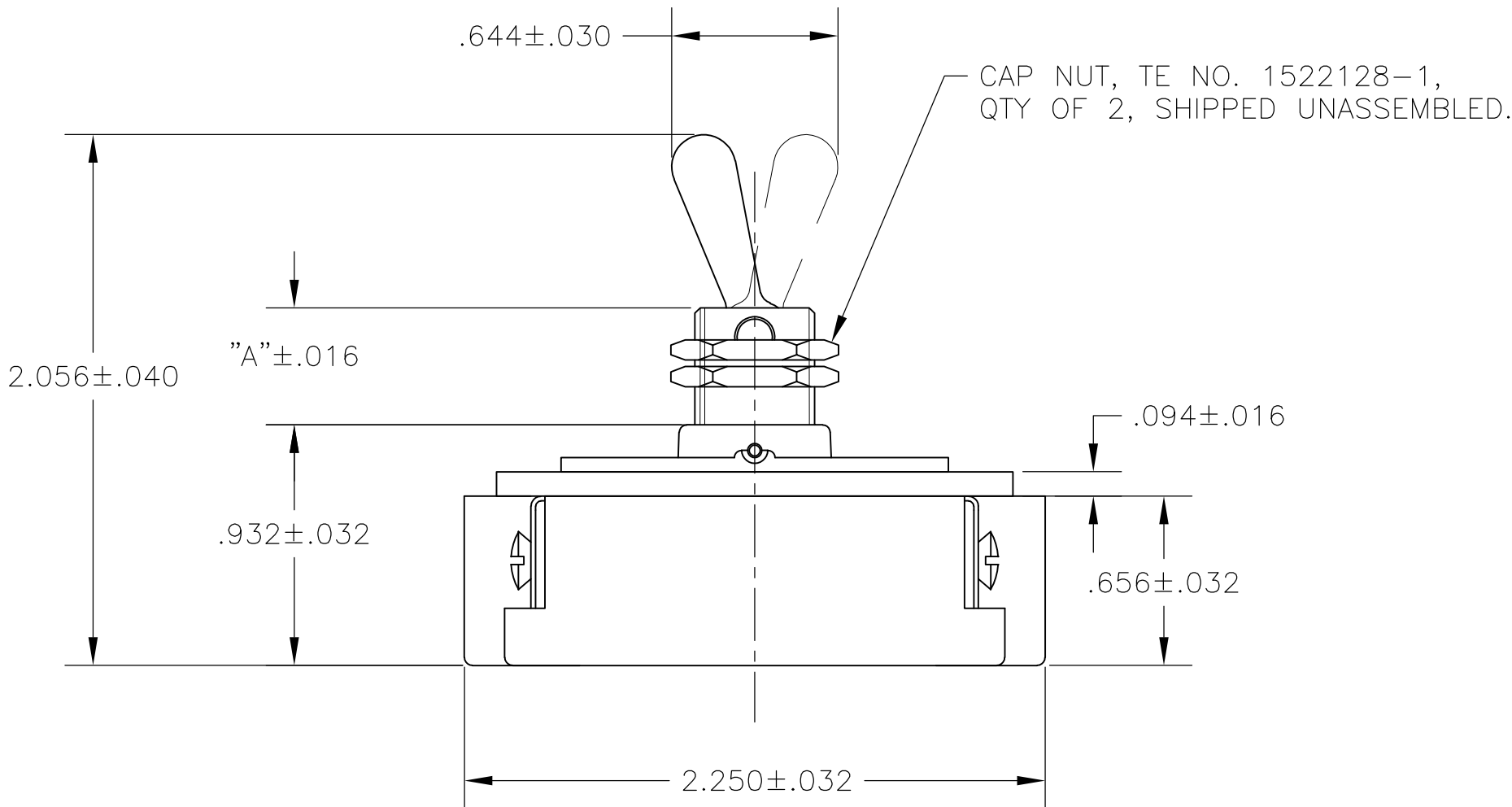
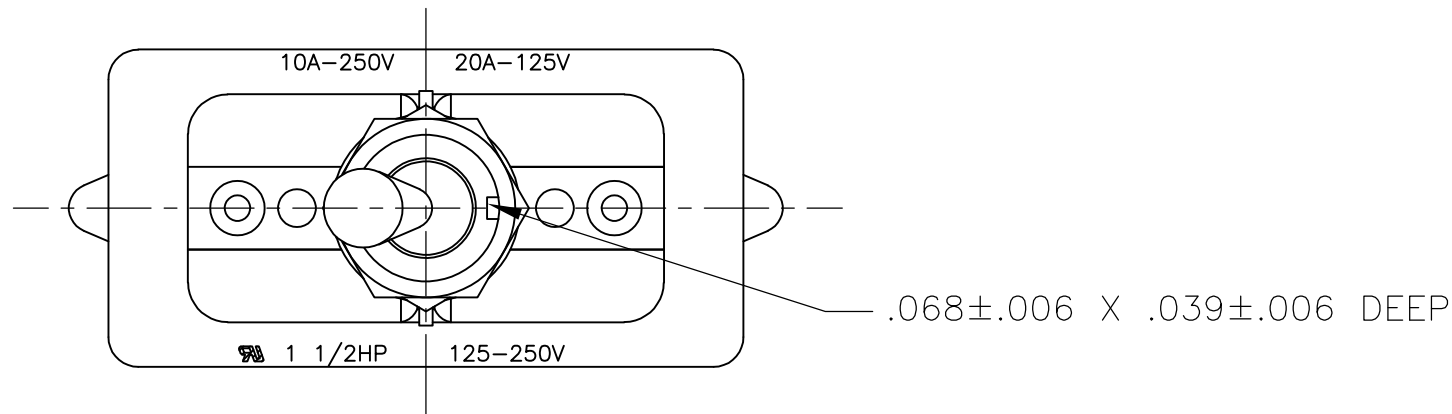
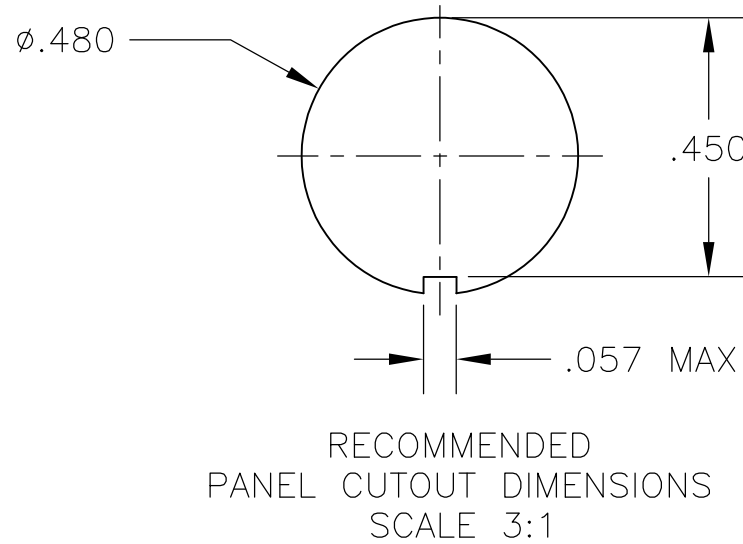
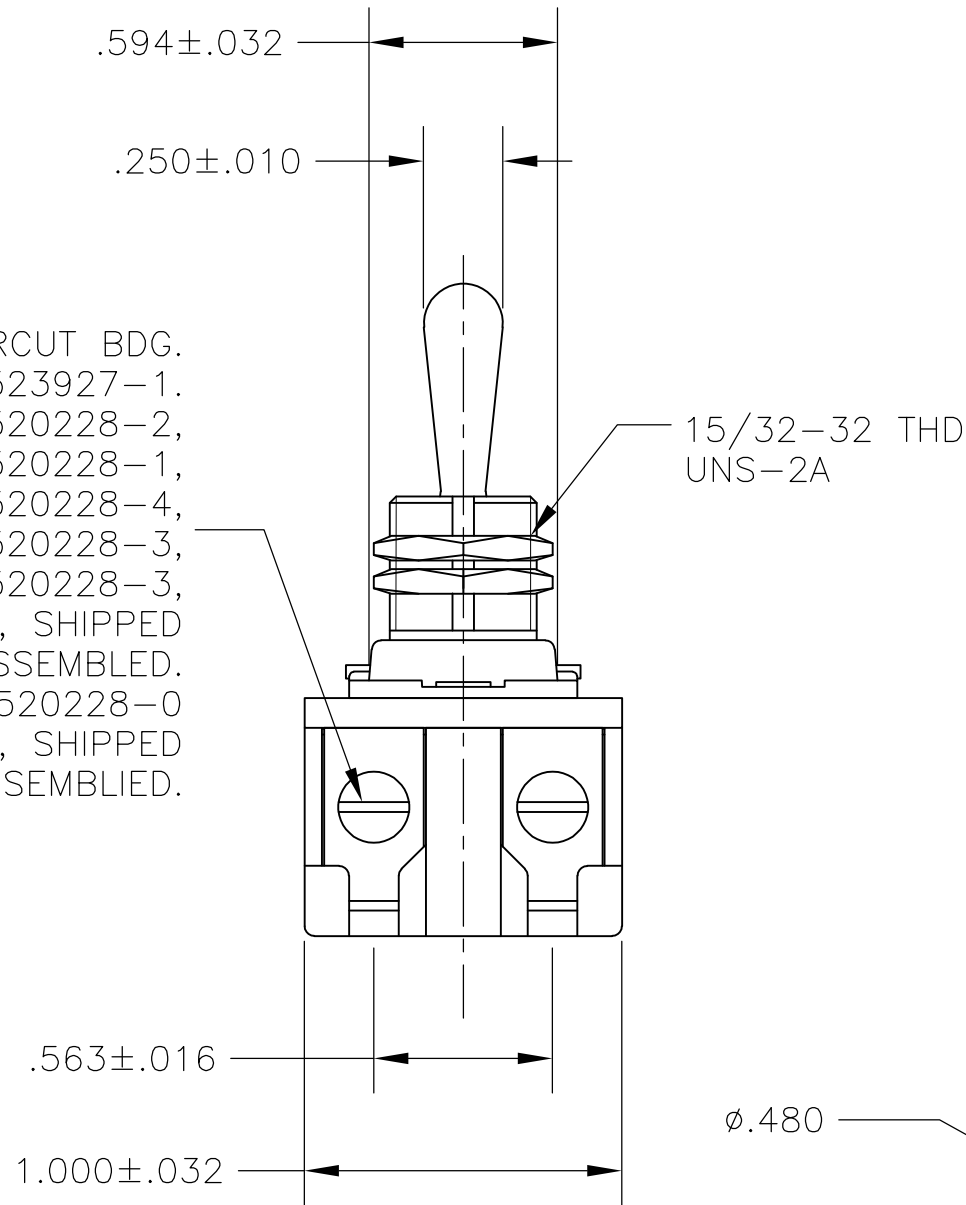


LOC	DIST	REVISIONS					
		P	LTR	DESCRIPTION	DATE	DWN	APVD
AD	00		B2	REVISED PER ECO-11-004587	11MAR11	RK	HMR





6-32 X .250 LONG UNDERCUT BDG. HD. SCREW, PART NO. 1523927-1. SWITCHES 1520228-1, 1520228-2, 1520228-3, 1-1520228-1, 2-1520228-3, 2-1520228-4, 6520228-1, 6520228-2, 6520228-3, 1-6520228-1, 2-6520228-3, 2-6520228-4: QTY OF 4, SHIPPED UNASSEMBLED. SWITCH 1-1520228-0, 1-6520228-0 ONLY: QTY OF 4, SHIPPED ASSEMBLED.

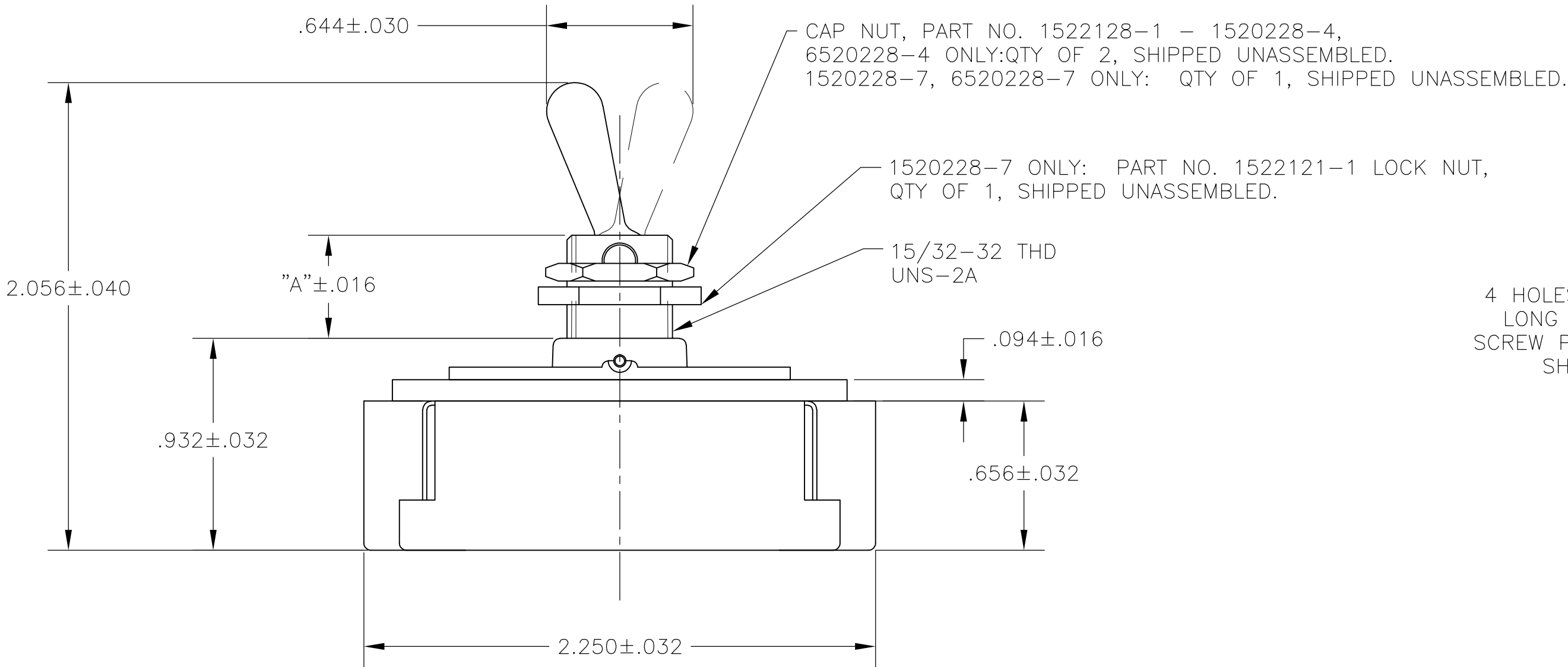
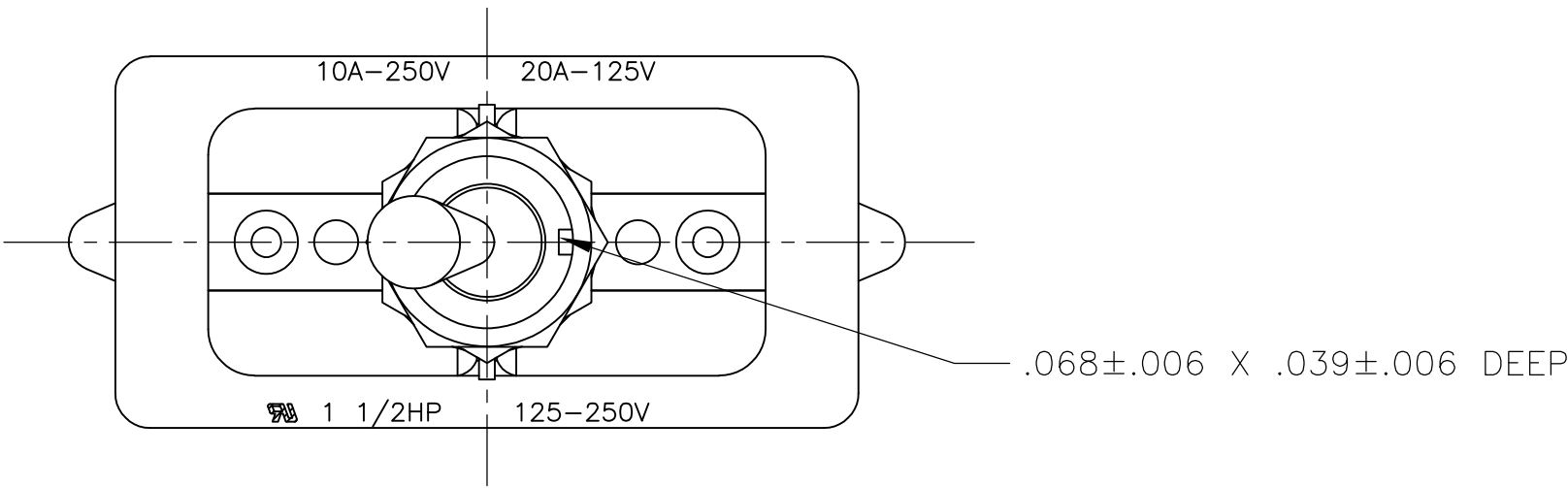


2-1520228-4/2-6520228-4	7360K8 T-PAK	15/32" THD LENGTH DIE CAST	.469	DPST
2-1520228-3/2-6520228-3	7360K7 T-PAK	11/32" THD LENGTH DIE CAST	.344	DPST
1-1520228-1/1-6520228-1	8910K219	15/32" THD LENGTH DIE CAST	.469	DPST
1-1520228-0/1-6520228-0	8910K205	11/32" THD LENGTH DIE CAST	.344	DPST
1520228-6/6520228-6	7362K4	15/32" THD LENGTH DIE CAST	.469	SPST WITH BUSSING
1520228-3/6520228-3	7360K7	11/32" THD LENGTH DIE CAST	.344	DPST
1520228-2/6520228-2	7359K3	15/32" THD LENGTH DIE CAST	.469	DPST
1520228-1/6520228-1	7359K2	11/32" THD LENGTH DIE CAST	.344	DPST
PART NO.	ARAB NO.	BUSHING / PLATE ASSY	A	DESCRIPTION

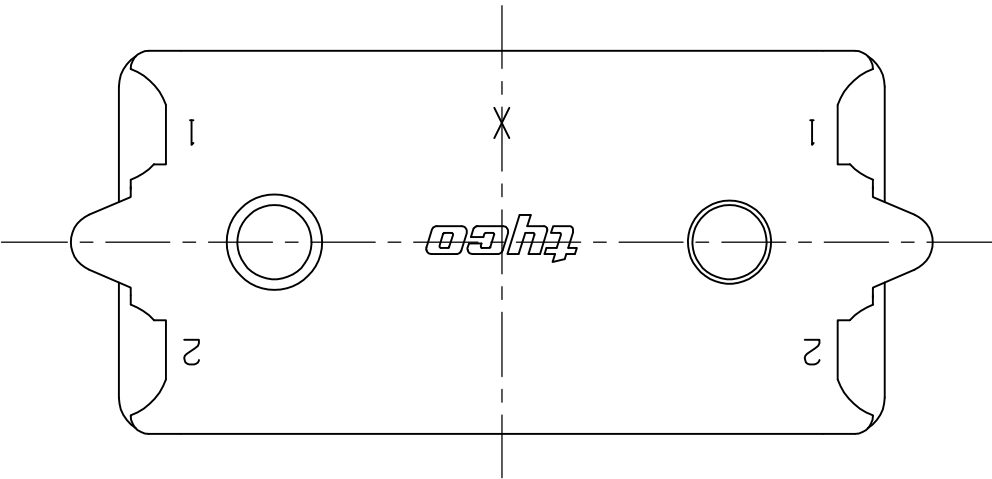
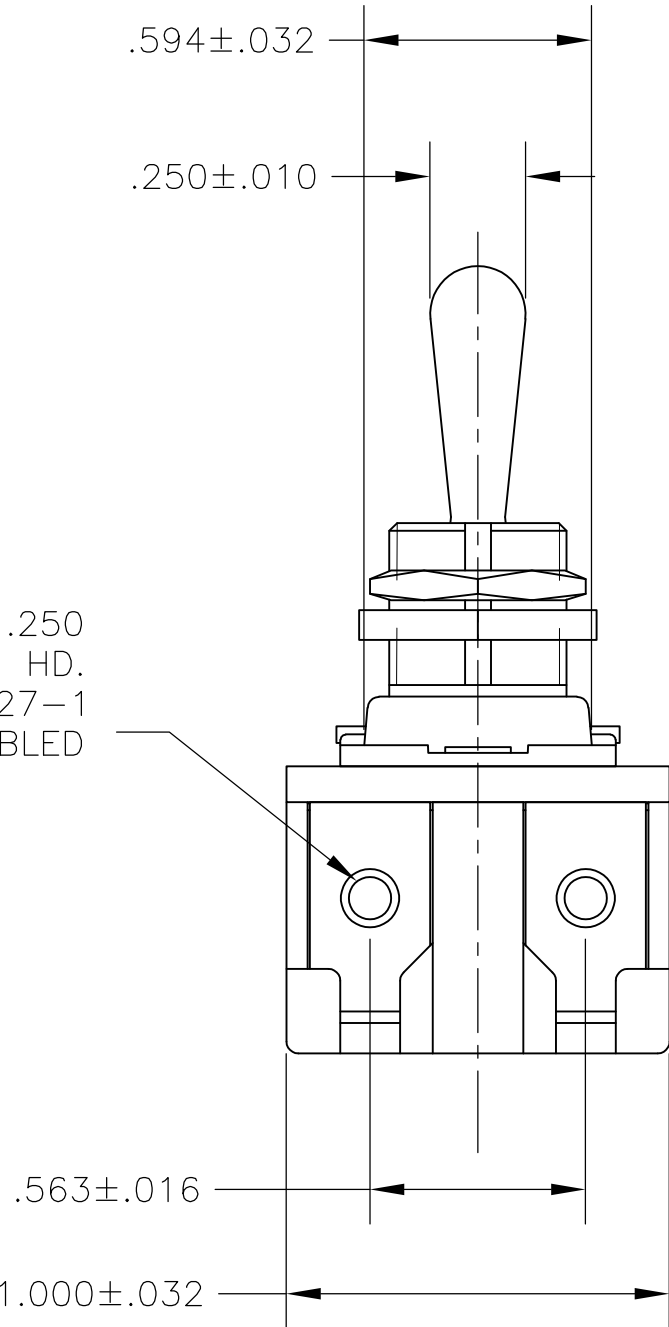
- 1 T-PAK - SWITCH AND HARDWARE INDIVIDUALLY PACKED IN PLASTIC BAGS BEFORE BEING PLACED IN A INTERMEDIATE BOX WHICH IS THEN PLACED IN A SHIPPING BOX. SEE TABLE.
- 2 P/N X-6520228-X IS ROHS COMPLIANT.
- 3 MOUNTING DIMENSIONS FOR REFERENCE ONLY.

90-345

THIS DRAWING IS A CONTROLLED DOCUMENT.		DWN —	26SEP02	 TE Connectivity					
DIMENSIONS: INCHES		CHK —	—						
	0 PLC	±	—	NAME 20 AMP 125V AC/DC, 10 AMP 250V AC/DC, 1 1/2 HP 125V/250V AC/DC, ONE HOLE MOUNTING TOOL HANDLE TOGGLE SWITCH	RESTRICTED TO —				
	1 PLC	±	—						
	2 PLC	±	—						
	3 PLC	±	—						
	4 PLC	±	—						
ANGLES		±	—	SIZE	CAGE CODE	DRAWING NO	—		
MATERIAL —	FINISH —	WEIGHT —	—	A2	00779	C=1520228	—		
CUSTOMER DRAWING				SCALE	NTS	SHEET	1 of 4	REV	B2





4 HOLES FOR 6-32 X .250
LONG UNDERCUT BDG. HD.
SCREW PART NO. 1523927-1
SHIPPED UNASSEMBLED



- 1 T-PAK - SWITCH AND HARDWARE INDIVIDUALLY PACKED
IN PLASTIC BAGS BEFORE BEING PLACED IN AN INTERMEDIATE
BOX WHICH IS THEN PLACED IN A SHIPPING BOX. SEE TABLE.
- 2 P/N X-6520228-X IS ROHS COMPLIANT.
- 3 MOUNTING DIMENSIONS FOR REFERENCE ONLY.

1520228-7/6520228-7	8909K23	15/32" THD LENGTH DIE CAST	.469	DPST T-PAKED W/SPECIAL HARDWARE
1520228-4/6520228-4	7360K8	15/32" THD LENGTH DIE CAST	.469	DPST
PART NO.	ARAB NO.	BUSHING / PLATE ASSY	A	DESCRIPTION

THIS DRAWING IS A CONTROLLED DOCUMENT.		DWN W. HANSON 29APR93	 TE Connectivity											
		CHK W. Leonard 02MAY93												
DIMENSIONS: INCHES		TOLERANCES UNLESS OTHERWISE SPECIFIED:		NAME 20 AMP 125V AC/DC, 10 AMP 250V AC/DC, 1 1/2 HP 125V/250V AC/DC, ONE HOLE MOUNTING TOOL HANDLE TOGGLE SWITCH										
	0 PLC ± -	APVD E. WESOLEK 03MAY93	PRODUCT SPEC											
	1 PLC ± -	—	—											
	2 PLC ± -	—	—											
	3 PLC ± -	—	—											
4 PLC ± -	—	—	—	SIZE	CAGE CODE	DRAWING NO	RESTRICTED TO							
MATERIAL	FINISH	WEIGHT	A2 00779 C-1520228					—						
—		—		CUSTOMER DRAWING					SCALE	2:1	SHEET	2 of 4	REV	B2

THIS DRAWING IS UNPUBLISHED.

RELEASED FOR PUBLICATION

ALL RIGHTS RESERVED.

© COPYRIGHT - By -

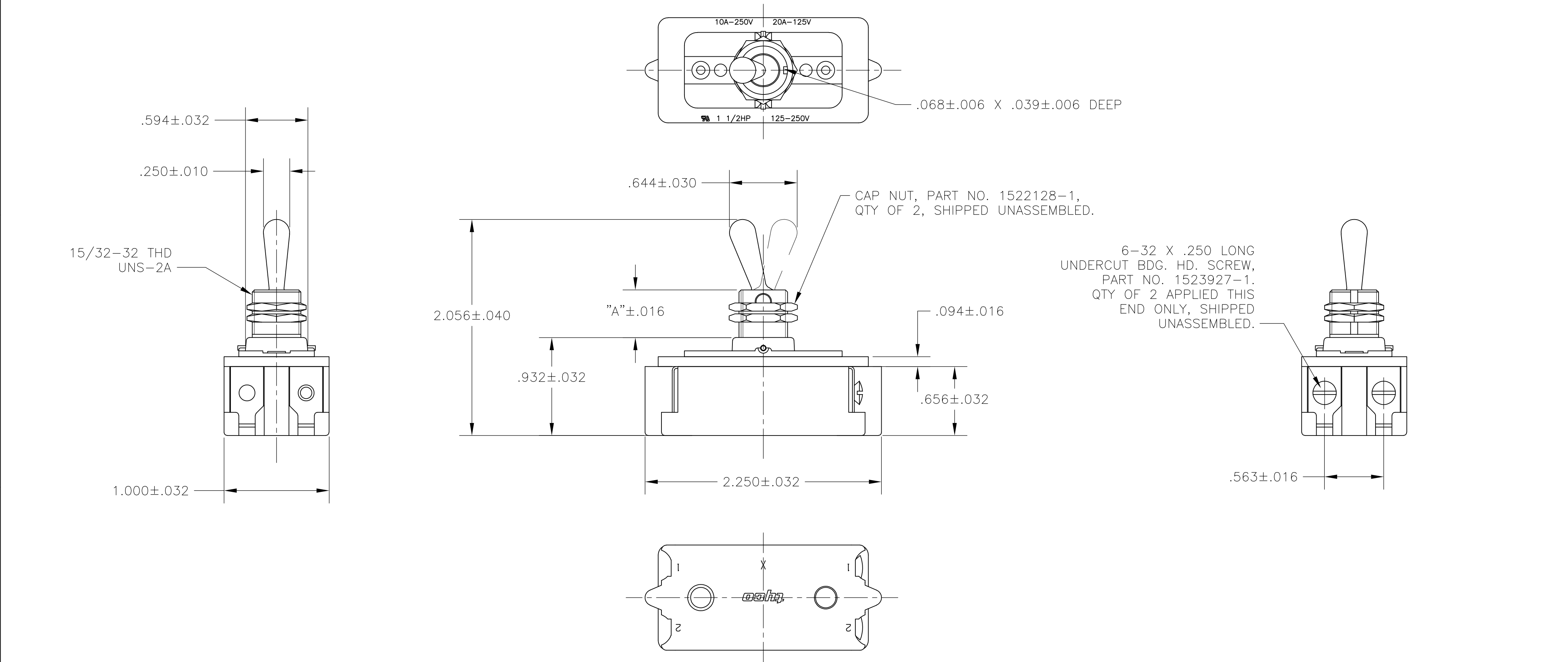
LOC	DIST	REVISIONS				
AD	00	P	LTR	DESCRIPTION	DATE	DWN
				SEE SHEET 1		

D

C


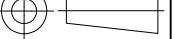
B

A

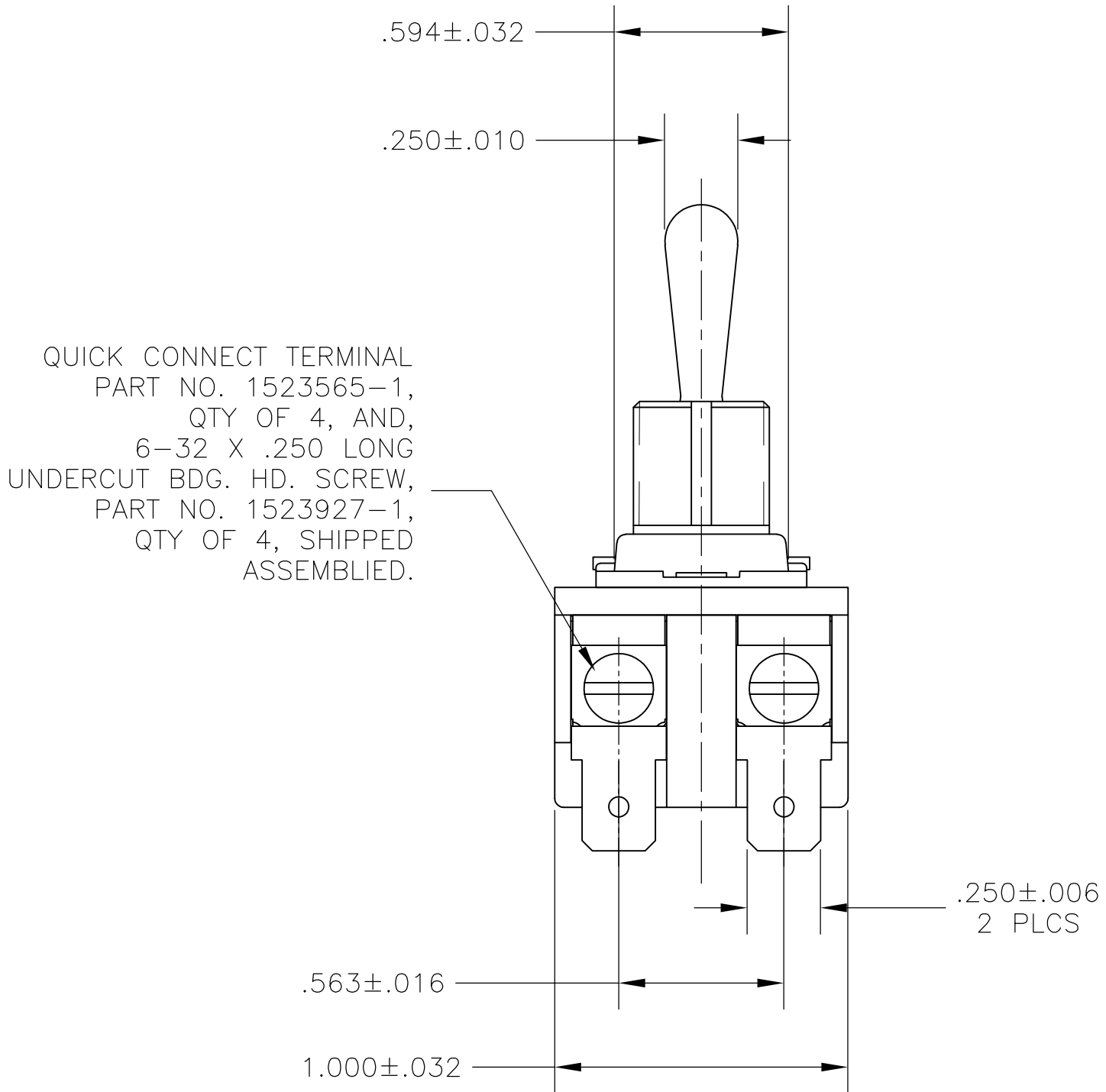
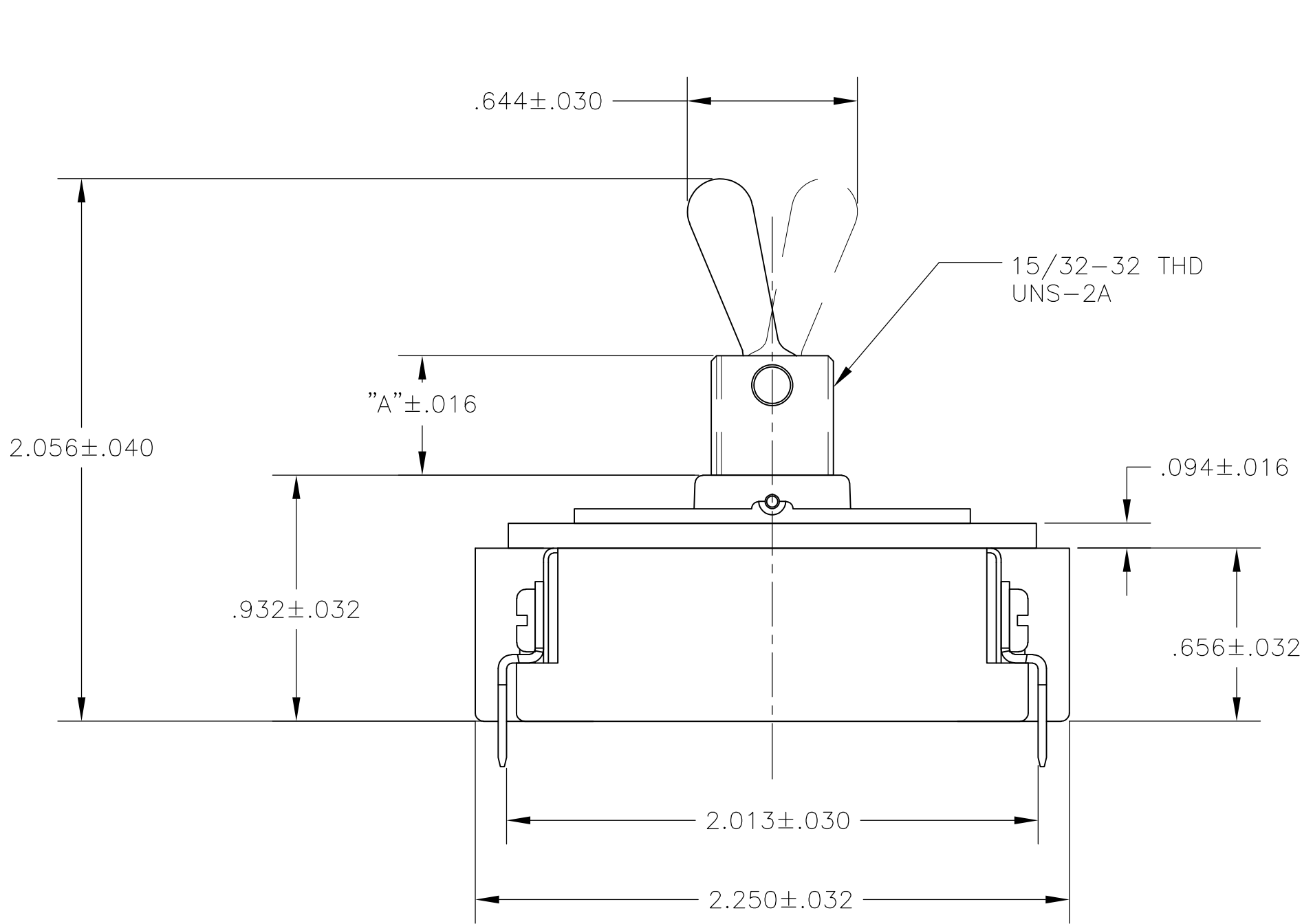
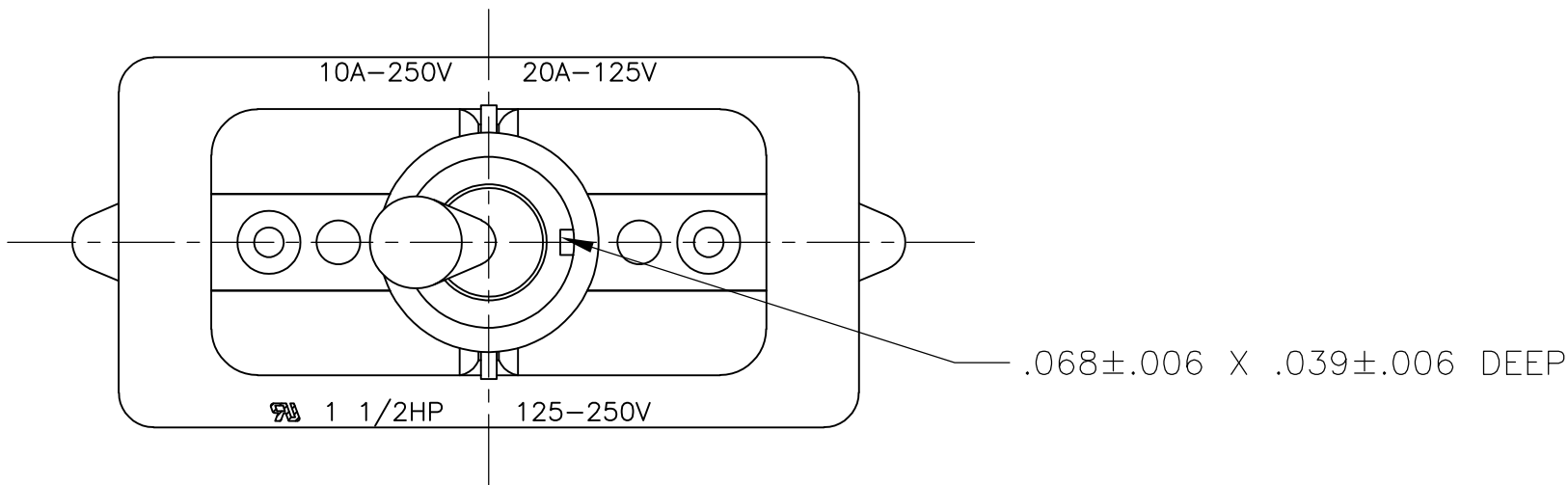


- 1 T-PAK — SWITCH AND HARDWARE INDIVIDUALLY PACKED IN PLASTIC BAGS BEFORE BEING PLACED IN A INTERMEDIATE BOX WHICH IS THEN PLACED IN A SHIPPING BOX. SEE TABLE.
- 2 PLY-O-PAK — SWITCH AND HARDWARE INDIVIDUALLY PACKED IN PLASTIC BAGS BEFORE BEING PACKED LOOSE IN A SHIPPING BOX. SEE TABLE.
- 3 P/N X-6520228-X IS ROHS COMPLIANT.
- 4 MOUNTING DIMENSIONS FOR REFERENCE ONLY.

2-1520228-5/2-6520228-5	7361K5 T-PAK	15/32" THD LENGTH DIE CAST	.469	SPST
1520228-9/6520228-9	8910K191	15/32" THD LENGTH DIE CAST	.469	SPST (PLY-O-PAK)
1520228-5/6520228-5	7361K5	15/32" THD LENGTH DIE CAST	.469	SPST
PART NO.	ARAB NO.	BUSHING / PLATE ASSY	A	DESCRIPTION


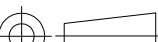
THIS DRAWING IS A CONTROLLED DOCUMENT.		DWN J. SMITH 13DEC77	 TE Connectivity							
		CHK R. GLENN 13DEC77								
DIMENSIONS: INCHES	TOLERANCES UNLESS OTHERWISE SPECIFIED:	APVD M.R. DUMMER 13DEC77	NAME 20 AMP 125V AC/DC, 10 AMP 250V AC/DC, 1 1/2 HP 125V/250V AC/DC, ONE HOLE MOUNTING TOOL HANDLE TOGGLE SWITCH							
	0 PLC ± -	PRODUCT SPEC	SIZE A2							
	1 PLC ± -	—						CAGE CODE 00779	DRAWING NO C=1520228	RESTRICTED TO —
	2 PLC ± -	—						APPLICATION SPEC	SCALE NTS	
MATERIAL —	3 PLC ± -	—	SHEET 3 of 4			REV B2				
	4 PLC ± -	—								
	ANGLES ± -	WEIGHT —								
FINISH —		CUSTOMER DRAWING								

LOC	DIST	REVISIONS					
AD	00	P	LTR	DESCRIPTION	DATE	DWN	APVD
			—	SEE SHEET 1	—	—	—



- 1 P/N X-6520228-X IS ROHS COMPLIANT.
- 2 MOUNTING DIMENSIONS FOR REFERENCE ONLY.

1520228-8/6520228-8	8910K12	15/32" THD LENGTH DIE CAST	.469	DPST
PART NO.	ARAB NO.	BUSHING / PLATE ASSY	A	DESCRIPTION

THIS DRAWING IS A CONTROLLED DOCUMENT.		DWN T.CHRISTENSEN 25OCT95		<div>TE Connectivity</div>									
DIMENSIONS: INCHES		CHK W.HANSON 01NOV95											
	TOLERANCES UNLESS OTHERWISE SPECIFIED:		APVD M.R.DUMMER 09NOV95		NAME 20 AMP 125V AC/DC, 10 AMP 250V AC/DC, 1 1/2 HP 125V/250V AC/DC, ONE HOLE MOUNTING TOOL HANDLE TOGGLE SWITCH								
			PRODUCT SPEC —										
			APPLICATION SPEC —		SIZE		CAGE CODE		DRAWING NO		RESTRICTED TO		
	MATERIAL —		FINISH —		WEIGHT —		A2		00779		C=1520228		—
CUSTOMER DRAWING				SCALE		2:1		SHEET		4 of 4		REV B2	

Mouser Electronics

Authorized Distributor

Click to View Pricing, Inventory, Delivery & Lifecycle Information:

[TE Connectivity:](#)

[2-1520228-5](#)