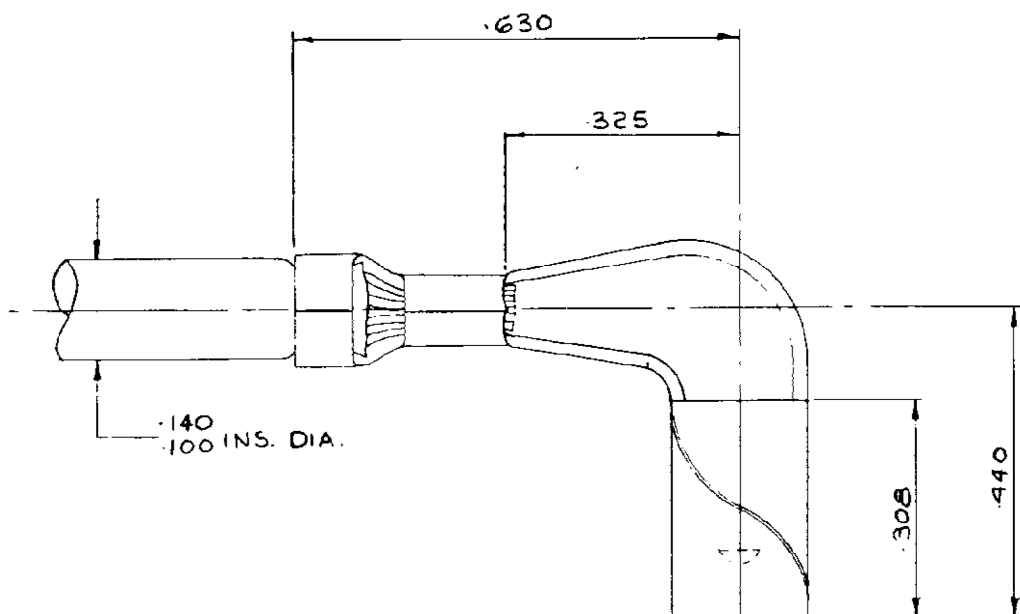


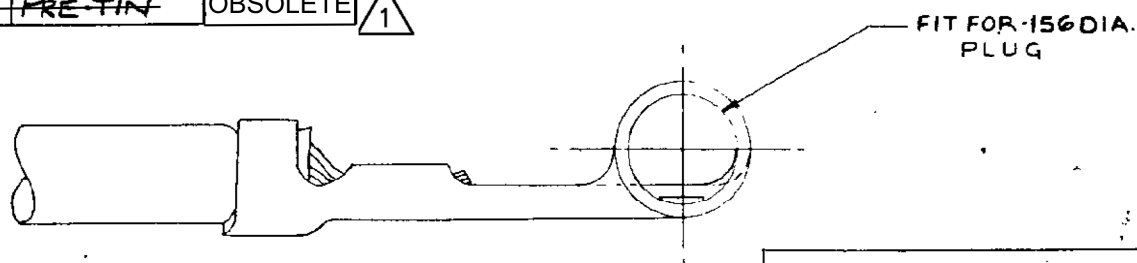
NUMBER C-150656

C AIRCRAFT-MARINE PRODUCTS (G.B.) LTD. 1963

1 OBSOLETE PARTS: OBSOLETE CIS STREAMLINING PER D.RENAUD/D.SINISI



150656-2	REVERSE REELED PRE-TIN	OBSOLETE	1
150656-2	PRE-TIN	OBSOLETE	1



CUSTOMER COPY
FOR REFERENCE ONLY

1-150656-1	REVERSE REELED
150656-1	NONE
PART NO	FINISH.

MATERIAL 020 PHOS. BRONZE		HEAT TREAT		COATING OR PLATING	
UNLESS REMOVE BURRS, BREAK SHARP EDGES 1/64 R. MAX OTHERWISE FRACTIONS ± 1/64 DECIMALS .000 = ± .005 SPECIFIED ANGLES: ± 0° 30' .0000 = ± .0005					
FIRST USED	WIRE RANGE 20-16	CLASS WT-R	TYPE AUTOMATIC	SCALE 4:1	
P.P.P.	AREA	TE Connectivity			
C2	REVISED PER ECR-19-012081	PC	05AUG19		
C1	REV PER ECO-10-000444	KK	08JAN 10		
C	-2 & 1-2 ADDED.	15	2.02		
D	1-1 ADDED	20	17.00		
A	100 MAG 3/0	20	31-1-16		
LTR	REVISION RECORD	ECA	DATE		
DR. Seagrave		20.6.63			
CHK. [Signature]		20.6.63			
APP.		NAME		WIRE TERMINAL	
REL.		NAME		SHUR PLUG RECEPTACLE	

Mouser Electronics

Authorized Distributor

Click to View Pricing, Inventory, Delivery & Lifecycle Information:

[TE Connectivity:](#)

[1-150656-1](#)