

LOC	DIST	REVISIONS					
		P	LTR	DESCRIPTION	DATE	DWN	APVD
HB	—		E	REMOVED THE RIB ON THE BASE TO CASE ECO-15-011310	03-Dec-15	YS.H	HL.C
			E1	ADD NEW PN ECO-18-008228	25-May-18	WQ.Y	K.T

D

D

C

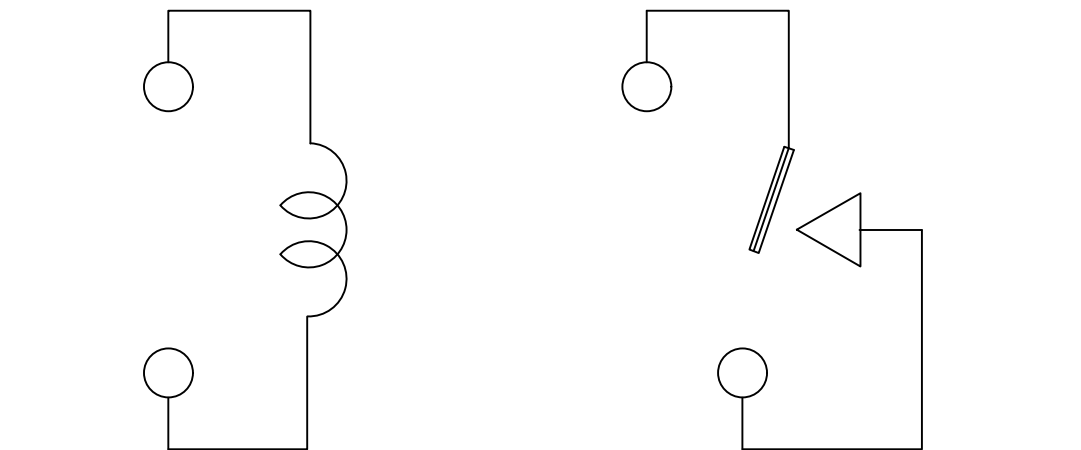
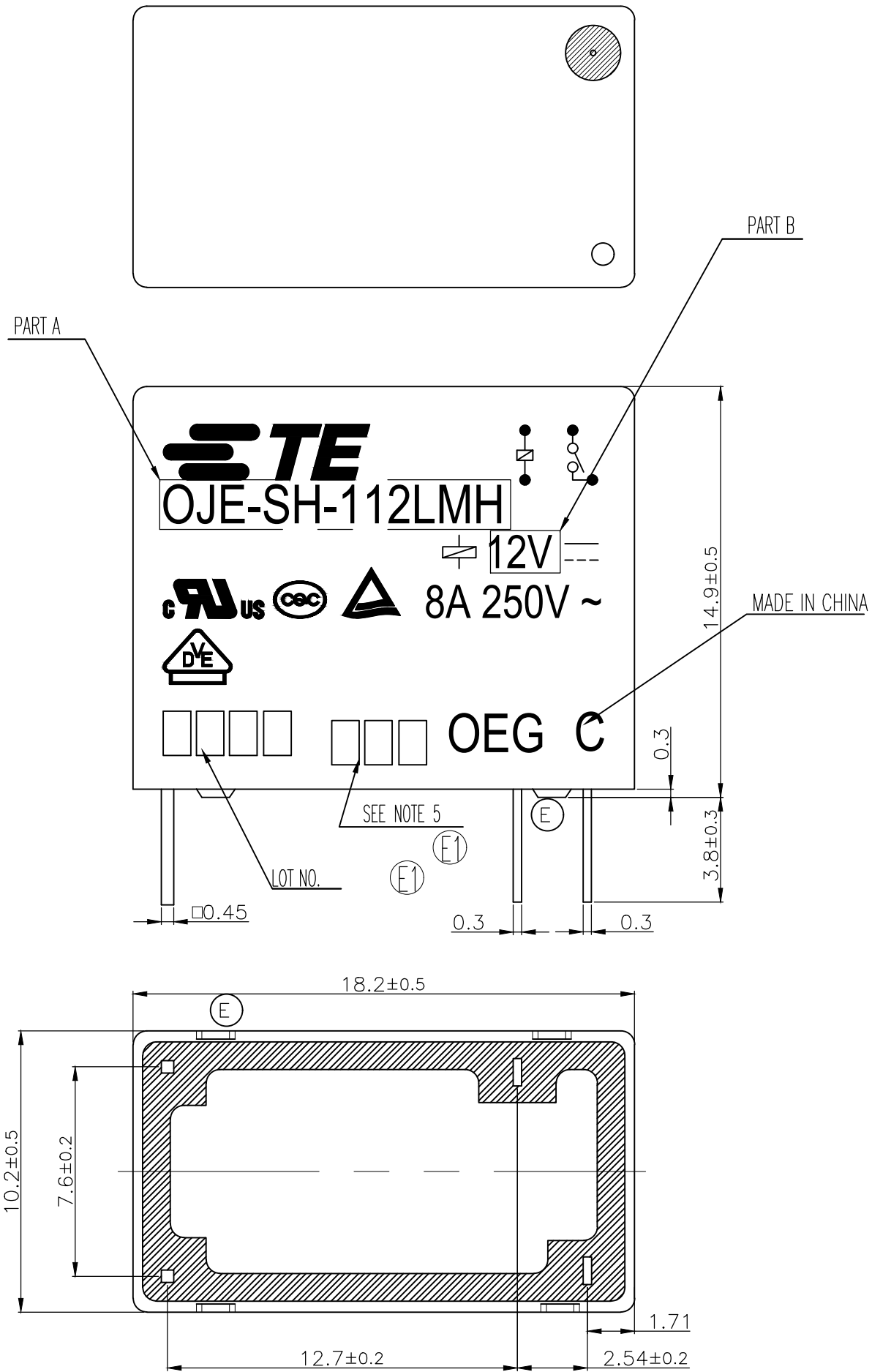
C

B

B

A

A



CONNECTION FIGURE

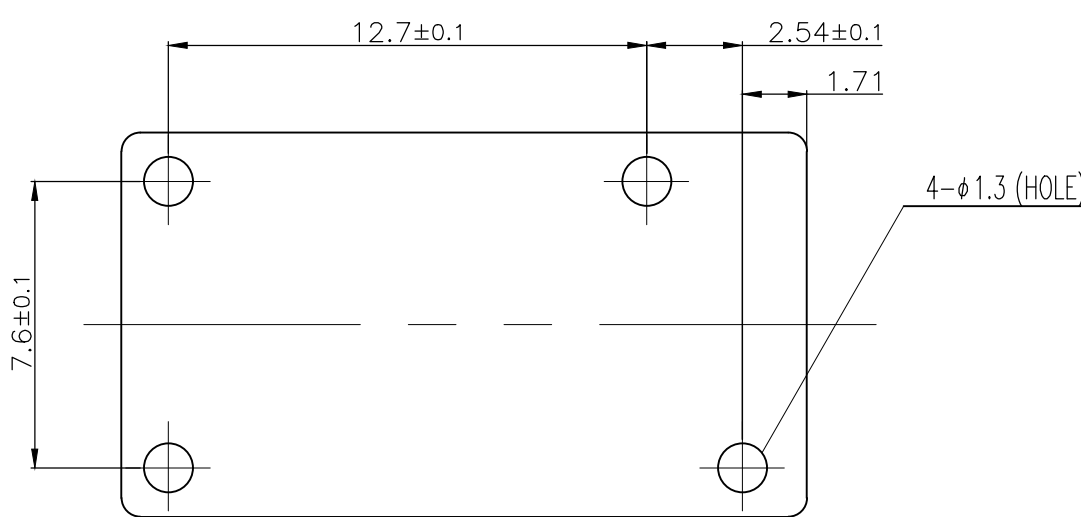

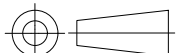


FIGURE FOR PRINTED CIRCUIT BOARD PROCESSING
(BOTTOM VIEW)

THIS DRAWING IS A CONTROLLED DOCUMENT.		DWN H.SASAKI	<div>TE Connectivity</div>							
		CHK Y.OIKAWA								
DIMENSIONS: mm	TOLERANCES UNLESS OTHERWISE SPECIFIED: 0 PLC ± - 1 PLC ± - 2 PLC ± - 3 PLC ± - 4 PLC ± - ANGLES ± -	APVD S.NAGAI	NAME -							
		PRODUCT SPEC SEE PRODUCT SPEC	OJE-SH-LMH CUSTOMER DRAWING -							
		APPLICATION SPEC -					SIZE	CAGE CODE	DRAWING NO	RESTRICTED TO -
		WEIGHT -					A3	00779	C-	
MATERIAL -		FINISH -	CUSTOMER DRAWING				SCALE 5:1	SHEET 1 OF 2	REV E1	

LOC	DIST	REVISIONS					
		P	LTR	DESCRIPTION	DATE	DWN	APVD
HB	—		—	SEE SHEET 1	—	—	—

E1

E1

E1

C	B	1461403-7	OJE-SH-124LMH	107-84031	24V	OJE-SH-124LMH	g
D	A	1461403-5	OJE-SH-124LMH	107-79010	24V	OJE-SH-124LMH	f
		1461403-4	OJE-SH-112LMH	107-79010	12V	OJE-SH-112LMH	e
		1461403-2	OJE-SH-109LMH	107-79010	9V	OJE-SH-109LMH	d
		1461403-1	OJE-SH-106LMH	107-79010	6V	OJE-SH-106LMH	c
		1461403-3	OJE-SH-105LMH	107-79010	5V	OJE-SH-105LMH	b
		1461403-6	OJE-SH-103LMH	107-79010	3V	OJE-SH-103LMH	a
FIG		TE PART NO	TE TYPE NAME	PACKAGE SPEC	PART B	PART A	TYPE

REFLAY TYPE

- NOTES:
- 1.ALL LOGO TO BE SCALE DOWNED
 - 2.FONT IS AIARL NARROW.
 - 3.PRODUCT SPECIFICATION AS SHOWN AT TABLE
 - 4.USE LASER MACHINE TO PRINT.

FIG A 5.LOT NO. SYSTEM AS FOLLOWING:

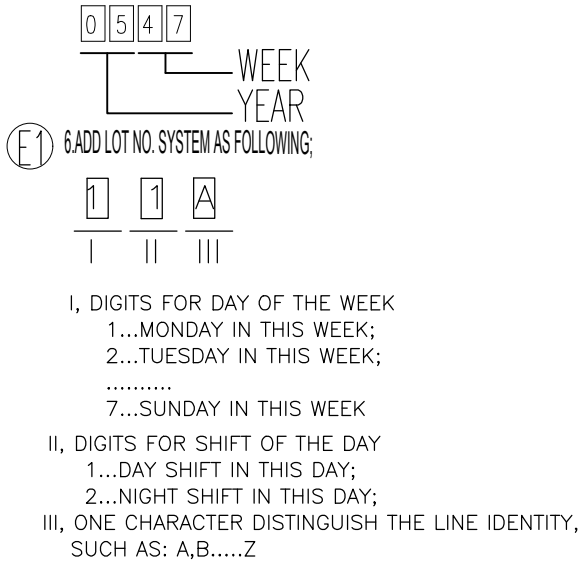
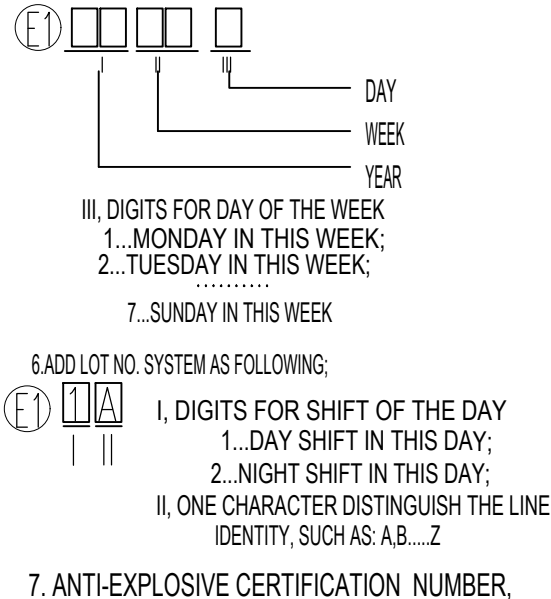


FIG B 5. LOT NO.SYSTEM AS FOLLOWING:



		UV RESIN	SEEL (VENT HOLE)	16
		EPOXY RESIN	SEEL (BASE & BOBBIN)	15
		3UEW	MAGNETIC WIRE	14
94V-0		P.B.T	CASE	13
94V-0		P.B.T	BASE	12
94V-0		P.B.T	BOBBIN	11
	SOLDER DIP	C.P WIRE	COIL TERMINAL	10
FIG C	94V-0	LCP	CARD	9
FIG D	94V-0	P.P.S	CARD	
		Ag ALLOY	MOVABLE CONTACT	8
		Ag ALLOY	NO.CONTACT	7
		STEEL	HINGE SPRING	6
	SOLDER DIP	Cu ALLOY	NO.TERMINAL	5
	SOLDER DIP	Cu ALLOY	MOVABLE SPRING	4
	NIP	STEEL	CORE	3
	NIP	STEEL	ARMATURE	2
	NIP	STEEL	YOKE	1
INCOMBUSTIBILITY	TREATMENT	MATERIAL	DESCRIPTION	ITEM

THIS DRAWING IS A CONTROLLED DOCUMENT.		DWN	H.SASAKI	—
		CHK	Y.OIKAWA	—
		APVD	S.NAGAI	
		PRODUCT SPEC	SEE PRODUCT SPEC	
		APPLICATION SPEC	—	
		WEIGHT	—	
CUSTOMER DRAWING				

DIMENSIONS:		TOLERANCES UNLESS OTHERWISE SPECIFIED:	
mm			
	0 PLC	± —	
	1 PLC	± —	
	2 PLC	± —	
	3 PLC	± —	
	4 PLC	± —	
	ANGLES	± —	
MATERIAL	FINISH		
—	—		

TE Connectivity

NAME

OJE-SH-LMH CUSTOMER DRAWING

SIZE	CAGE CODE	DRAWING NO	RESTRICTED TO
A3	00779	C- 1461403	—

SCALE	SHEET	REV
5:1	2 of 2	E1

Mouser Electronics

Authorized Distributor

Click to View Pricing, Inventory, Delivery & Lifecycle Information:

[TE Connectivity:](#)

[1461403-5](#)