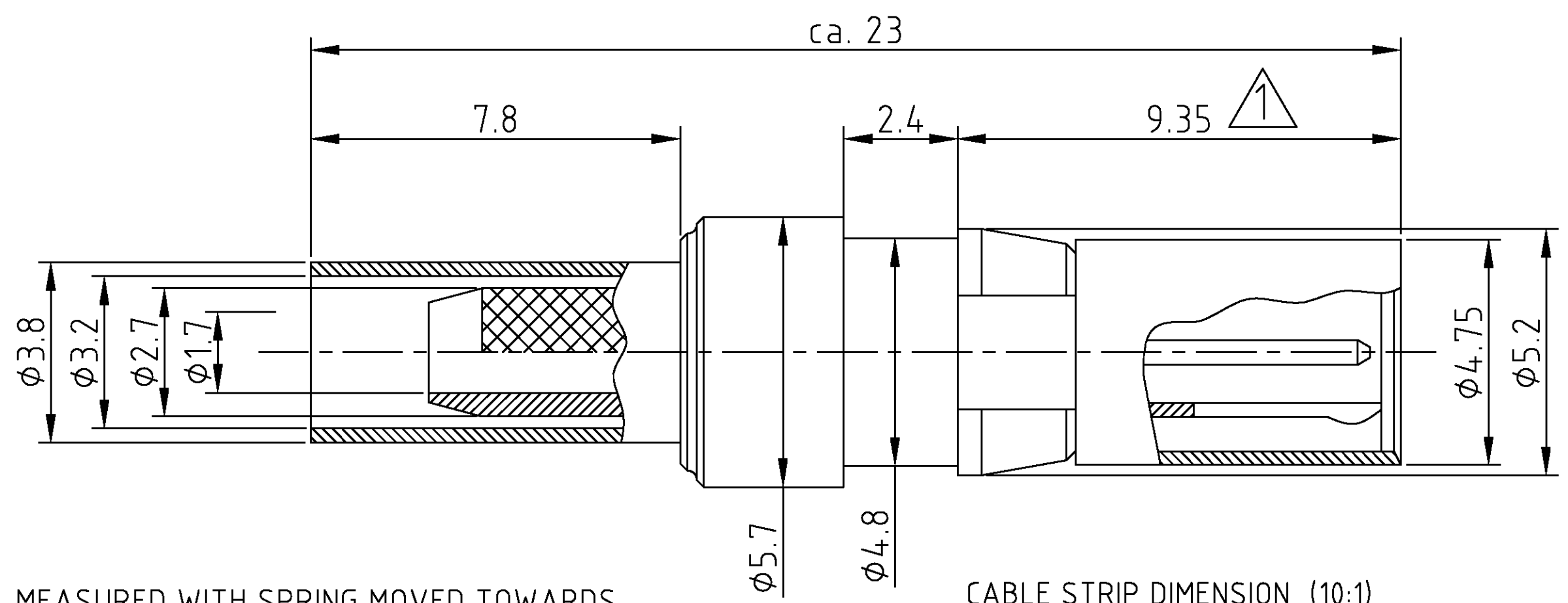
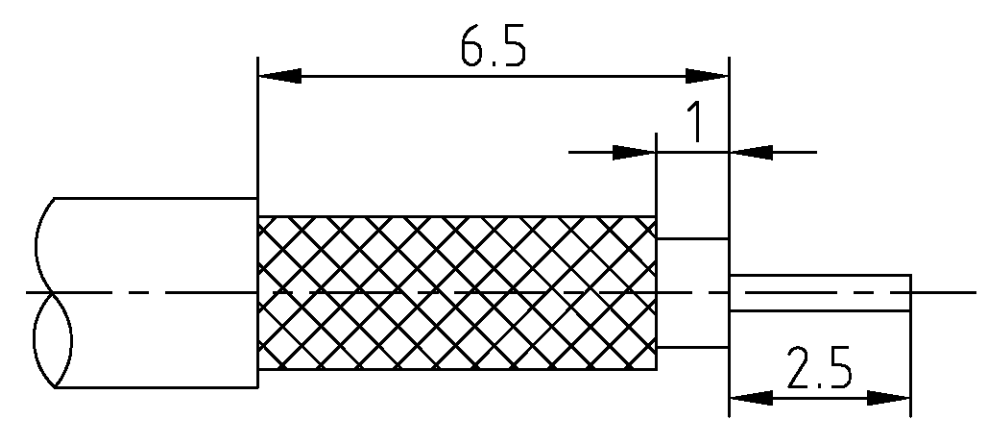


4		3		2		1	
119	DO NOT SCALE THIS DRAWING	SPECIFICATIONS SUBJECT TO CHANGE	DRAWING VALID FROM  04/01  DRAWING PROTECTED BY © COPYRIGHT AMP COMPANY, ALL RIGHTS RESERVED	REV.	CHANGE	DATE	NAME
	ARRETES NON COTEES PAS A L'ECHELLE	LES DONNEES TECHNIQUES PEUVENT ETRE CHANGEES		0	OU60-0098-00	29/9/2000	Mattheeuws
				01	SR10-0007-01	8/1/2001	Mattheeuws



1 MEASURED WITH SPRING MOVED TOWARDS THE MATING FACE

- STANDARD: ACCORDING TO DIN 41626, PART 2
- SPRING CONTACT: BERYLLIUM - COPPER
- CONTACT PLATING: GOLD
- DIELECTRIC: PTFE
- FULL CRIMP CENTER CONTACT: SQ 0.7
- OUTER CONDUCTOR: HEX 3.2
- ASSEMBLED ACCORDING TO ASSEMBLY INSTRUCTION 114-90006



-	-			-	COAX INSERT CABLE PLUG FOR			C
-	0-139019-1			1	CABLE RG 316 / RG 174 / RG 188			
DWG SIZE	PART NO	REV	DESCRIPTION	ITEM NO	DIMENSIONS WITH ANY TOLERANCE	FORMAT	DRAWING NR.	
DRAWN BY K. Donnet				27.09.00	± 0.2 ± 2°		A3	1392019
CHEKED BY K. Mattheeuws				27.09.00	SCALE 10:1	SHEET 1 OF 1	REV. 0	

# Mouser Electronics

Authorized Distributor

Click to View Pricing, Inventory, Delivery & Lifecycle Information:

[TE Connectivity:](#)

[1392019-1](#)