

4

3

2

1

THIS DRAWING IS UNPUBLISHED.

RELEASED FOR PUBLICATION

NOV ,2005.

© COPYRIGHT 2005 BY TYCO ELECTRONICS CORPORATION. ALL RIGHTS RESERVED.

LOC

DIST

REVISIONS

P

LTR

DESCRIPTION

DATE

DWN

APVD

C

ECR-05-016219

24NOV05

JMS

FWK

NOTES:

① PACK IN ACCORDANCE WITH AMP SPEC 107-3275

② 100 TRAY PACK IN ACCORDANCE WITH AMP SPEC 107-3275

③ Au PLATING

④ Ni PLATING

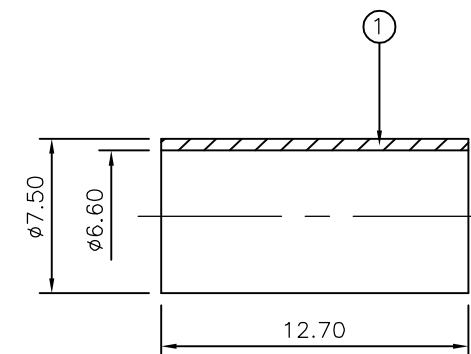
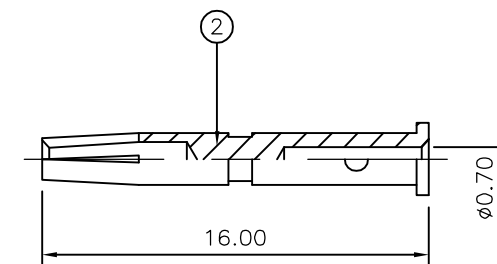
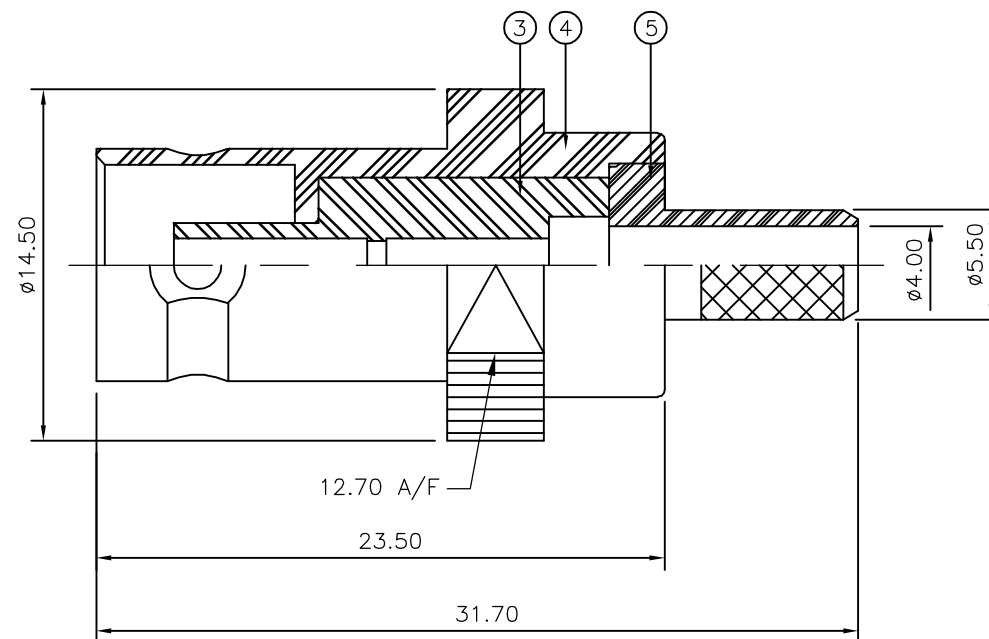
5 HAND TOOL : 9-1478240-0

6 DIE SET : 9-1478242-0

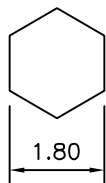
7 ELECTRICAL CHARACTERISTICS
FREQUENCY RANGE: DC - 2 GHz
NOMINAL IMPEDANCE: 75 Ohm
INSULATION RESISTANCE: 5000 MOhm
WORKING VOLTAGE: 500 Volts RMS at Sea Level
DIELECTRIC WITHSTAND VOLTAGE: 1500 Volts RMS Max
CONTACT RESISTANCE:
CENTRE CONTACT: 1.50 mOhm Max
OUTER CONTACT: 0.20 mOhm Max
VSWR @ 2GHz: 1.20:1 Max
INSERTION LOSS dB @ x 2 GHz: 0.20 Max

8 MECHANICAL CHARACTERISTICS
COUPLING RETENTION FORCE: N/A
CABLE RETENTION FORCE: 170N Min
DURABILITY: 500 Cycles Min

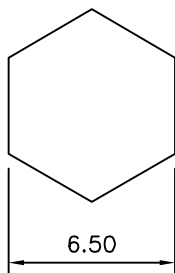
9 ENVIRONMENTAL CHARACTERISTICS
OPERATING TEMPERATURE: -65 to +165 DegC



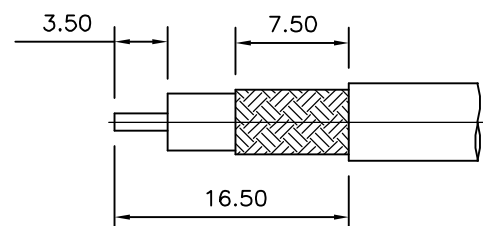
RECOMMENDED
CENTRE CONTACT
A/F HEX



RECOMMENDED
CRIMP SLEEVE
A/F HEX

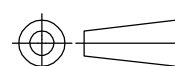


RECOMMENDED
CABLE STRIPPING DIM'S



THIS DRAWING IS A CONTROLLED DOCUMENT.

DIMENSIONS:
mm



MATERIAL

SEE TABLE

TOLERANCES UNLESS
OTHERWISE SPECIFIED:

0 PLC ± -
1 PLC ± -
2 PLC ± -
3 PLC ± -
4 PLC ± -
ANGLES ± -
FINISH

-

DWN J.SANDWELL 24NOV05

CHK S.PARLOW 24NOV05

APVD F.WHEELER-KING 24NOV05

PRODUCT SPEC

108-3435

APPLICATION SPEC

411-3247

WEIGHT

-

CUSTOMER DRAWING

		1	1	BRASS	④	CHASSIS	5
		1	1	BRASS	④	BODY	4
		1	1	PTFE		INSULATION	3
		1	1	BRASS	③	CONTACT	2
		1	1	BRASS	④	FERRULE	1
		6--0	1--0	MATERIAL		DESCRIPTION	ITEM
		④	④				

QUANTITY PER ASSY PARTS LIST

DWN J.SANDWELL 24NOV05

CHK S.PARLOW 24NOV05

APVD F.WHEELER-KING 24NOV05

PRODUCT SPEC

108-3435

APPLICATION SPEC

411-3247

WEIGHT

-

CUSTOMER DRAWING

tyco
Electronics

Tyco Electronics Corporation

Bideford EX39 4HE

NAME

BNC STRAIGHT JACK CRIMP 75 OHM
RG59B/U, 62A/U, 140/U, 210/U, URM90,
KX6A, KX25, KX52, KX53

SIZE

CAGE CODE

DRAWING NO

RESTRICTED TO

A3

00779

C-1337443

SCALE NTS

SHEET 1 OF 1

REV C

Mouser Electronics

Authorized Distributor

Click to View Pricing, Inventory, Delivery & Lifecycle Information:

[TE Connectivity:](#)

[1-1337443-0](#)