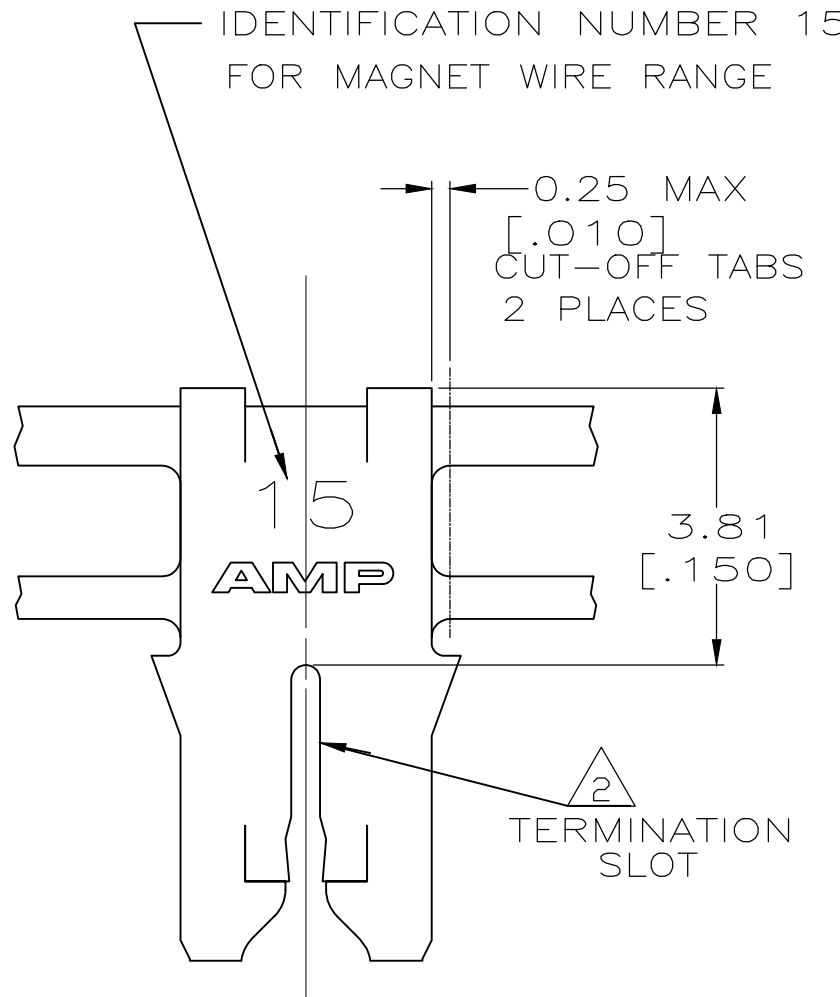
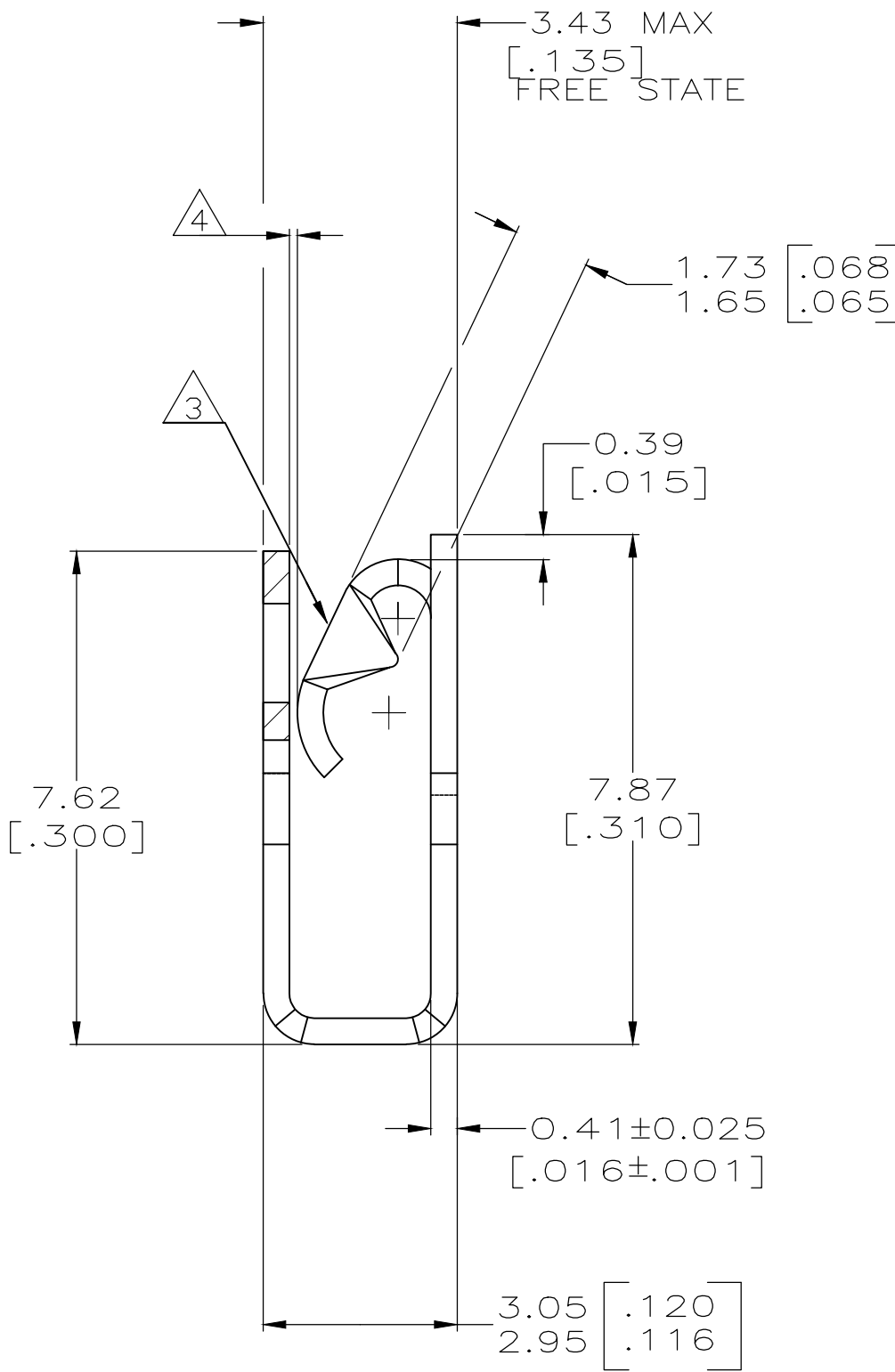
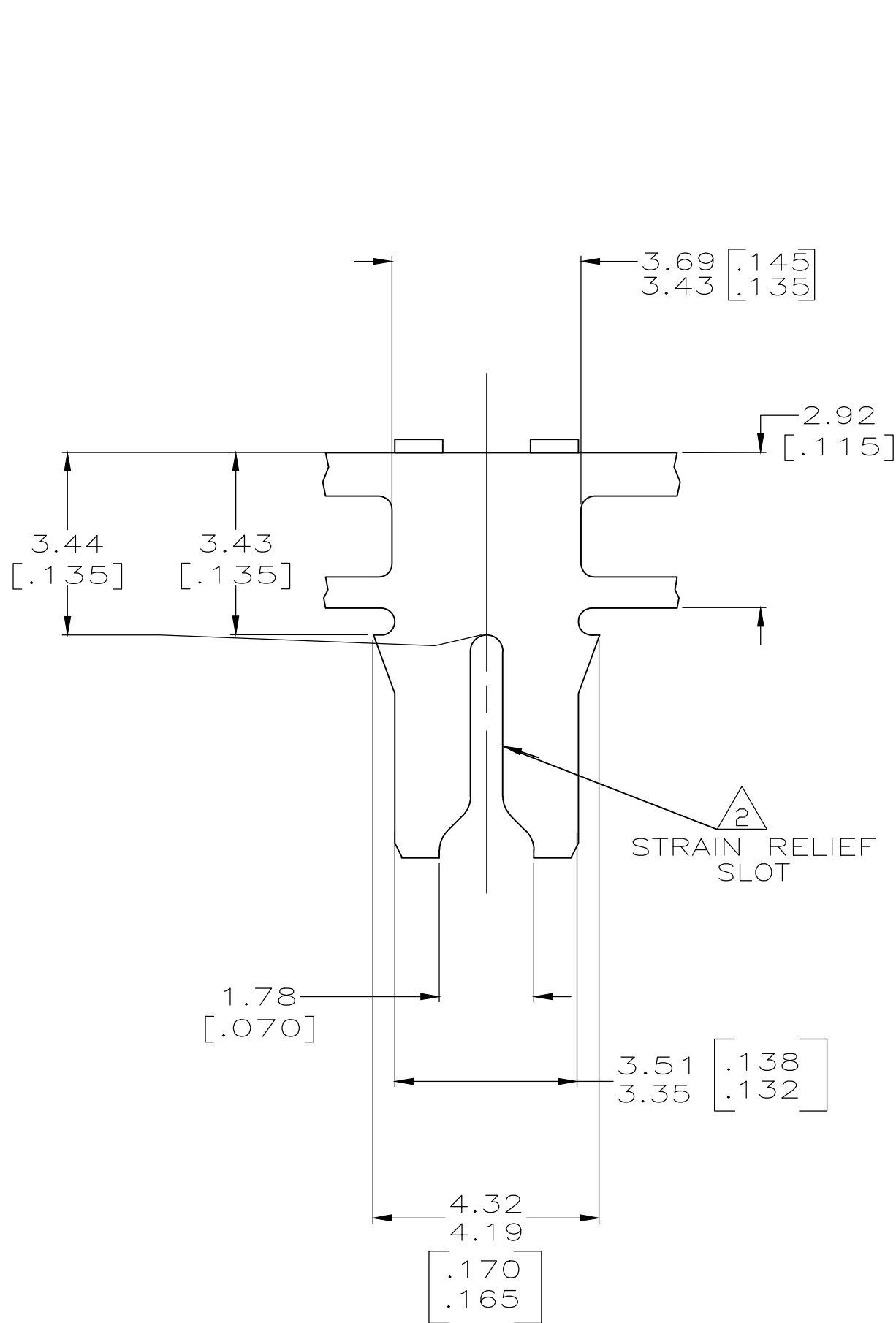




- 1 CONTINUOUS STRIP ON REELS WITH TERMINALS LOCATED ON 5.59±0.08 [.220±.003] CENTERS
- 2 SLOT ACCEPTS A 0.54-0.64mm [#23.5-#22] AWG COPPER MAGNET WIRE.
- 3 MATES WITH STANDARD MAG-MATE STYLED POKE-IN TAB TERMINAL.
- 4 WHEN FREE STATE IS COMPRESSED TO 3.23 [.127] DIMENSION GAP BETWEEN SPRING AND CARRIER IS TO BE 0.30 [.012] MAX.
- 5 0.0010 [.000040] MIN TIN
- 6 ANTI-FRETTING LUBRICANT APPLIED.
- 7 0.00382 [.000150] MIN SILVER PLATE OVER 0.00127 [.000050] MIN NICKEL UNDERPLATE.
- 8 PRELIMINARY - NOT FOR PRODUCTION.



7	4M BRASS	8	1217689-4
5	H04 PHOSPHOR BRONZE	8	1217689-3
5	4M BRASS	8	1217689-2
5	4M BRASS		1217689-1
FINISH		MATERIAL	
		PART NUMBER	

THIS DRAWING IS A CONTROLLED DOCUMENT.		DWN 15OCT2001 SAMUEL D. WYNN	 TE Connectivity	
DIMENSIONS: INCHES		CHK 17OCT2001 MICHAEL S. FEHER		
	TOLERANCES UNLESS OTHERWISE SPECIFIED:		NAME SPECIAL LEAF CONTACT, 300 SERIES MAG-MATE™ —	
	0 PLC ± —			
	1 PLC ± —			
	2 PLC ± 0.25[.010]			
	3 PLC ± —		SIZE CAGE CODE DRAWING NO RESTRICTED TO	
	4 PLC ± —			
	ANGLES ± —			
MATERIAL SEE TABLE	FINISH SEE TABLE	APVD 17OCT2001 KURT A. RANDOLPH	A2 00779 C-1217689	
		PRODUCT SPEC 108-2012	SCALE 10:1 SHEET 1 of 1 REV C	
		APPLICATION SPEC 114-2046		
		WEIGHT —		
CUSTOMER DRAWING				

Mouser Electronics

Authorized Distributor

Click to View Pricing, Inventory, Delivery & Lifecycle Information:

[TE Connectivity:](#)

[1217689-1](#)