

4

3

2

1

THIS DRAWING IS UNPUBLISHED.

RELEASED FOR PUBLICATION

, 19

© COPYRIGHT 19

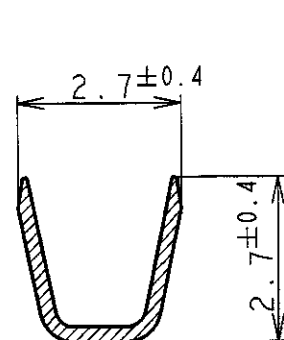
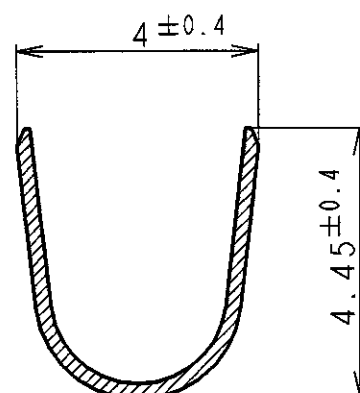
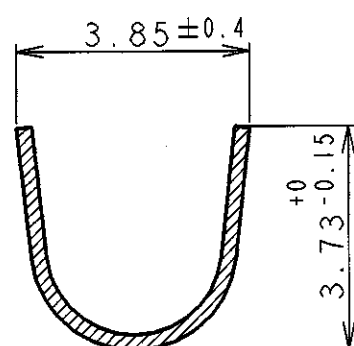
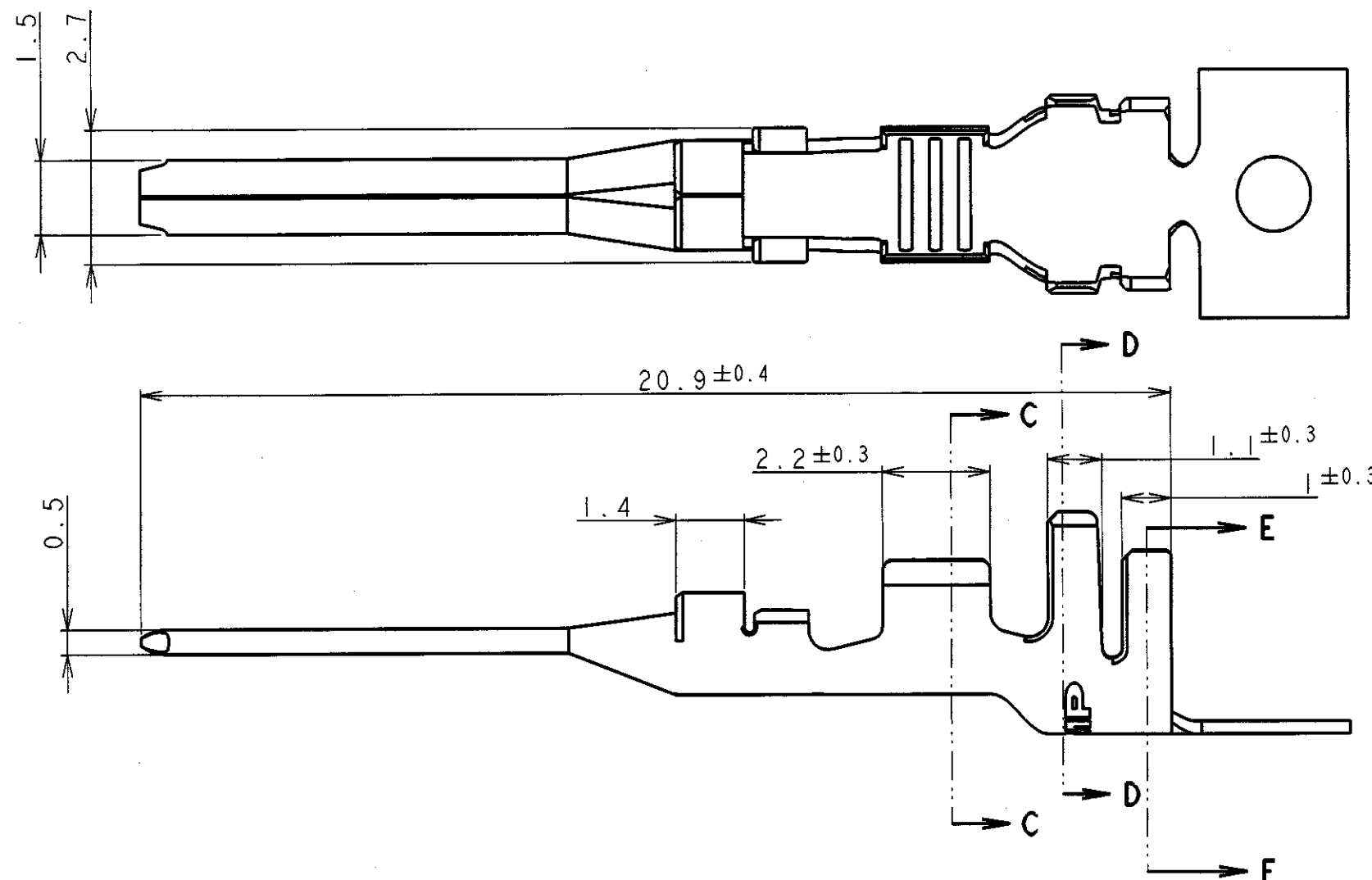
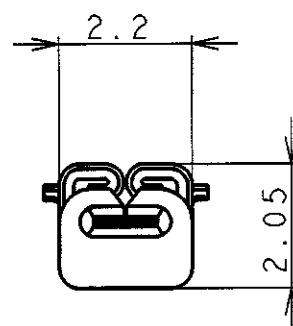
BY AMP INCORPORATED. ALL RIGHTS RESERVED.

LOC DIST

REVISIONS

変更

P	LTR	DESCRIPTION	ECN	DATE	DWN	APVD
	C	REVISED	FJ00-0401-99	9-MAR'99	CWL	

SECT
断面 C-CSECT
断面 D-DSECT
断面 E-E

NOTES:

1. APPLICABLE SPECIFICATIONS:
PRODUCT SPEC: 108-5616
APPLICATION SPEC: 114-5256

1123910-1

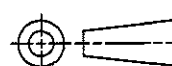
PART NUMBER

WIRE RANGE 絶縁電線断面積		0.51~1.38mm ² (AWG #20~#16)	INSULATION DIA 被覆外径		Ø1.8~3.1mm
AMP			日本イー・エム・ピー株式会社 Kawasaki, Japan		
NAME 名称			POWER TAB CONTACT FOR AMP MINI CT LATTICE CONNECTOR		
SIZE	CAGE CODE	DRAWING NO	RESTRICTED TO		
A3	00779	©-1123910			
SCALE 尺度		8:1	SHEET	OF	REV
			1	1	C

THIS DRAWING IS A CONTROLLED DOCUMENT FOR AMP INCORPORATED. IT IS SUBJECT TO CHANGE AND THE CONTROLLING ENGINEERING ORGANIZATION SHOULD BE CONTACTED FOR THE LATEST REVISION.		DWN W. L. CHOO	10. JUN '98
		CHK J. TANIGAWA	11. JUN '98
		APVD D. Kubonaka	9. MAR '99
		PRODUCT SPEC	108-5616
		APPLICATION SPEC	114-5256
		WEIGHT	-
MATERIAL 材料		FINISH 仕上	PRE-TIN
COPPER ALLOY		CUSTOMER DRAWING	

DIMENSIONS:

単位: mm

TOLERANCES UNLESS
OTHERWISE SPECIFIED:

一般公差	10±	±0.2
	30±	±0.25
	100±	±0.3
	ANGLE	±3°

Mouser Electronics

Authorized Distributor

Click to View Pricing, Inventory, Delivery & Lifecycle Information:

[TE Connectivity:](#)

[1123910-1](#)