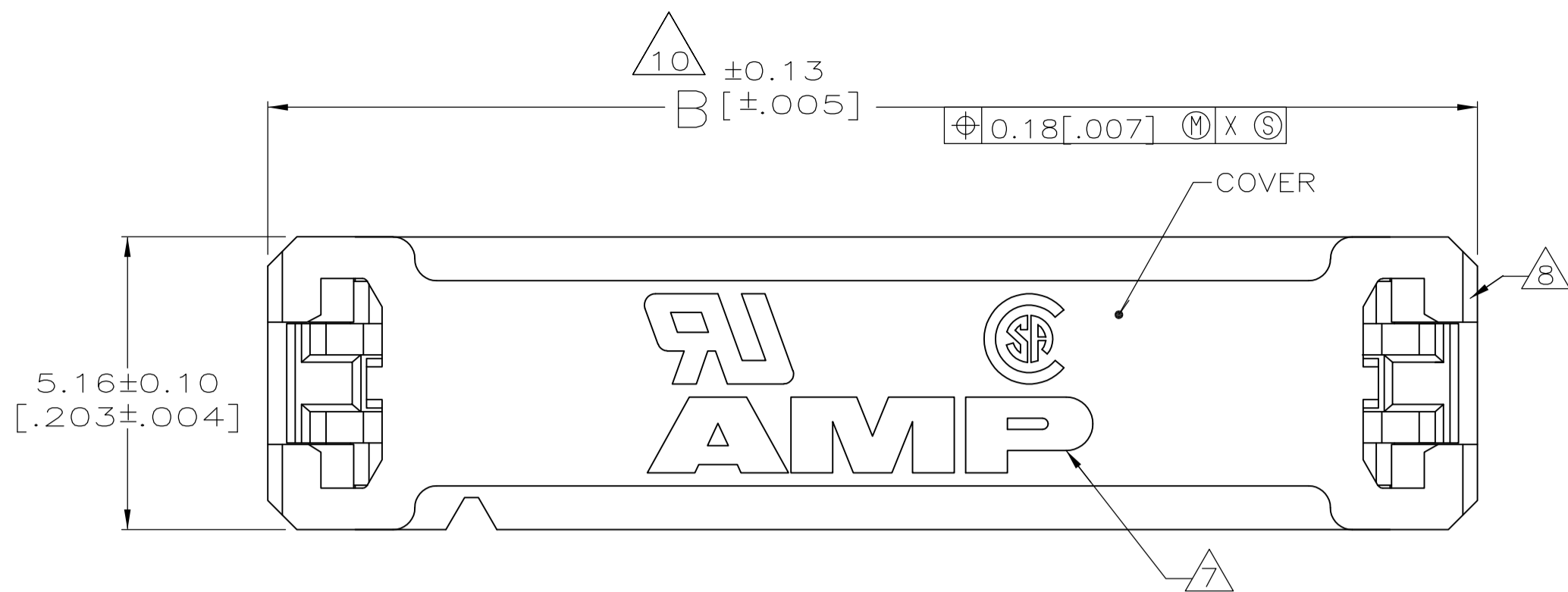


D

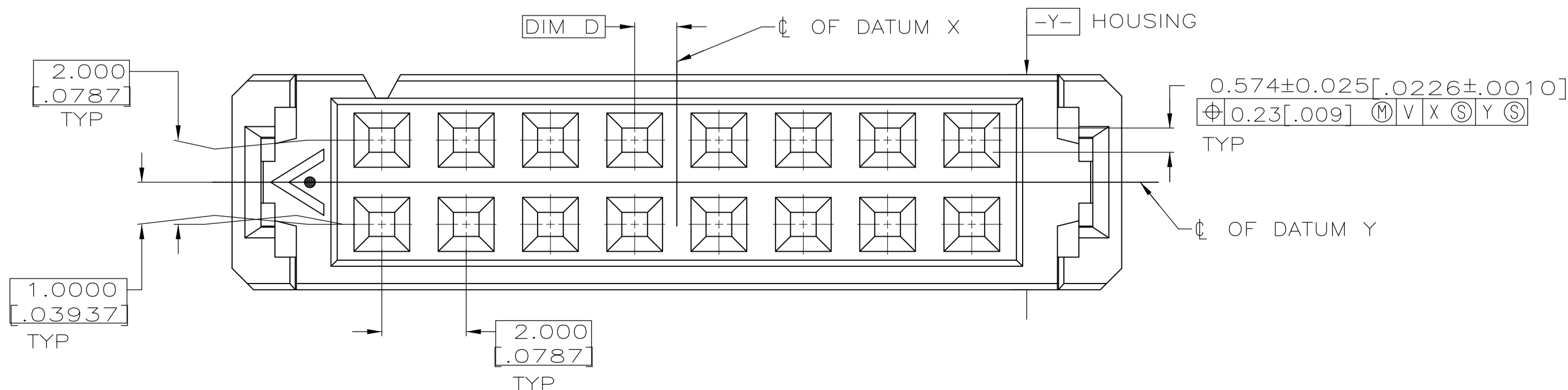
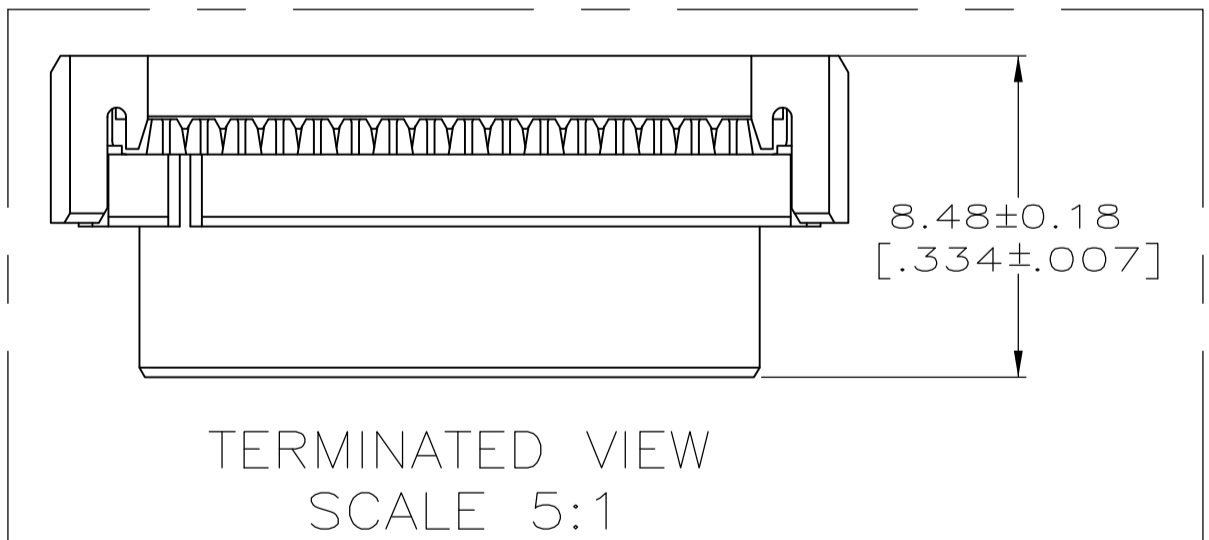
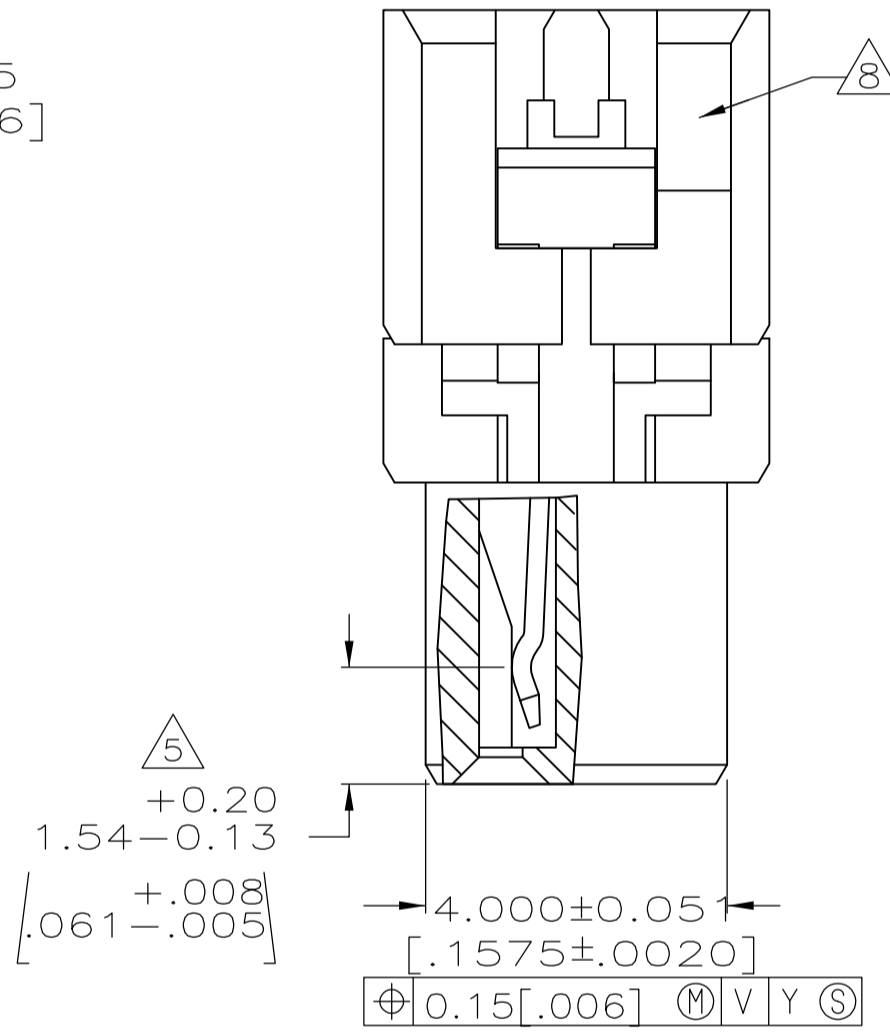
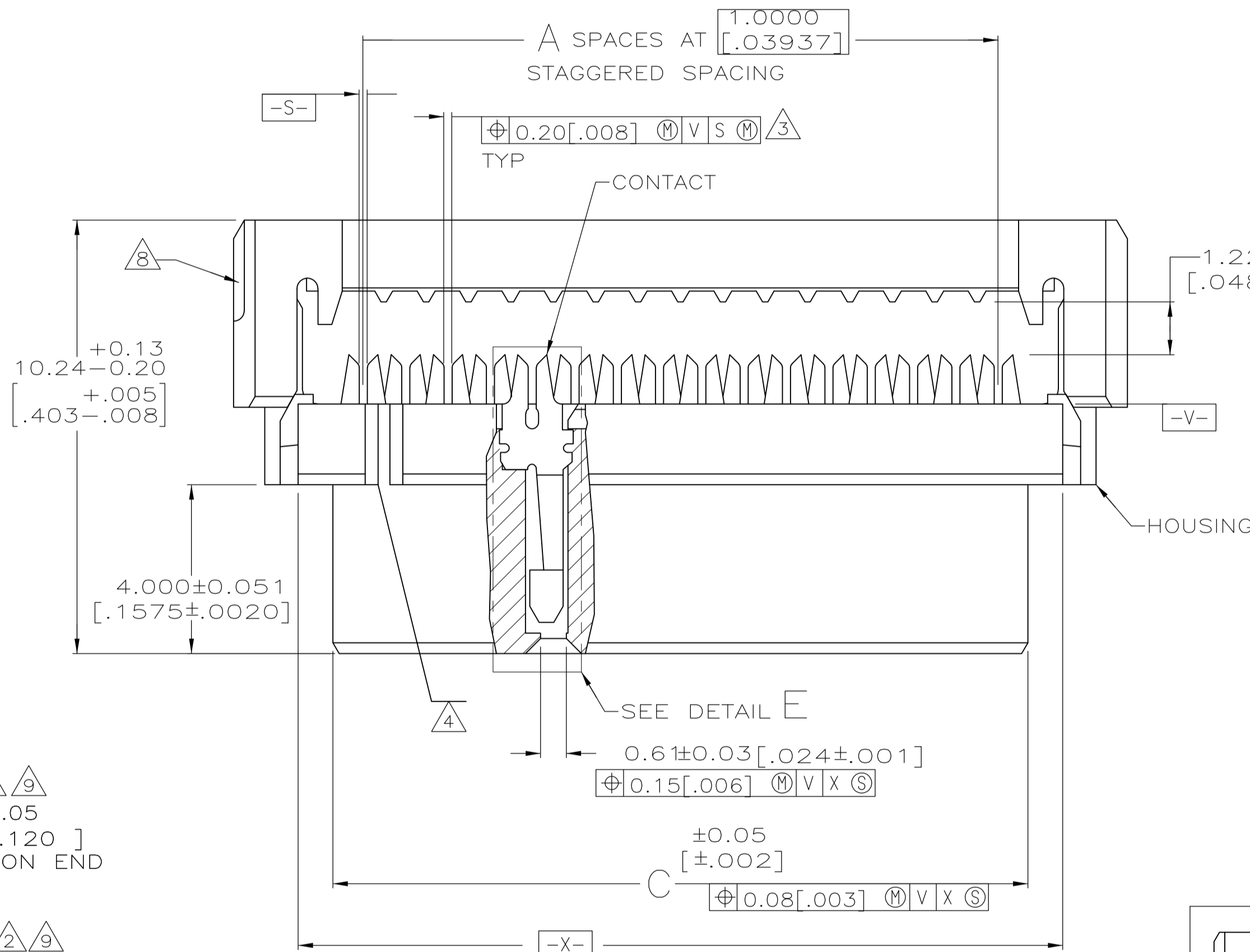
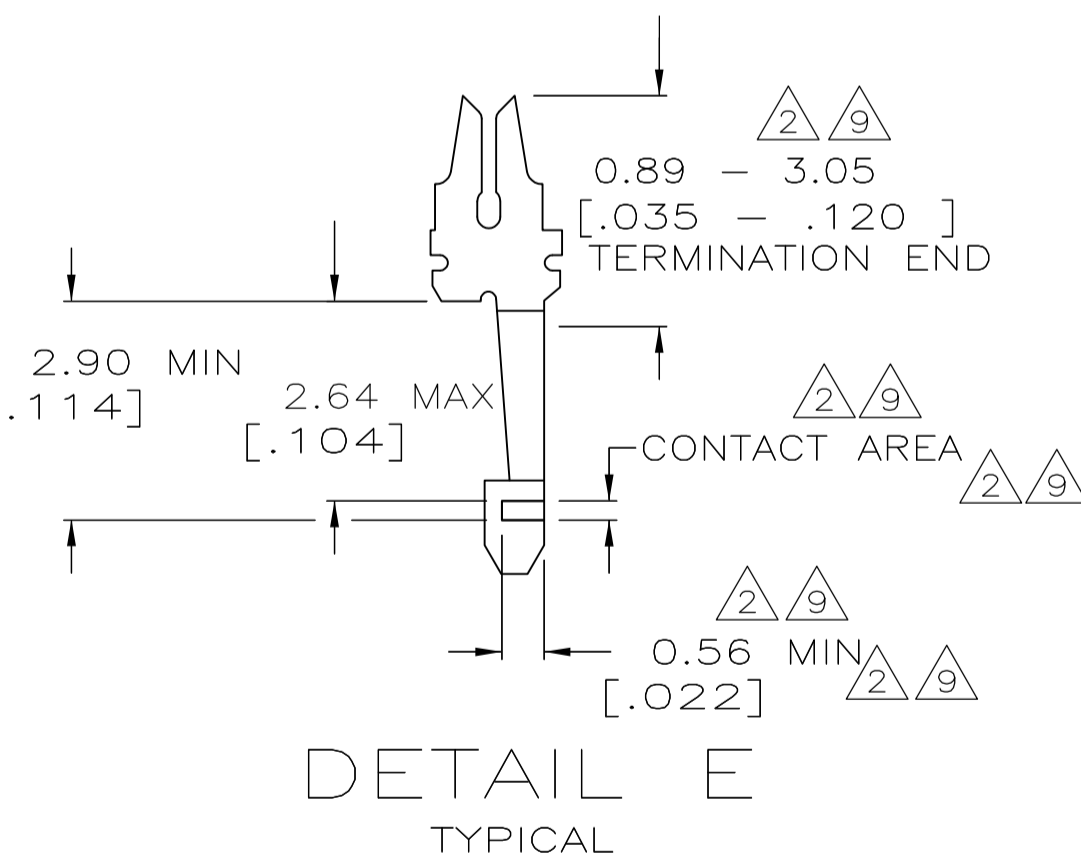
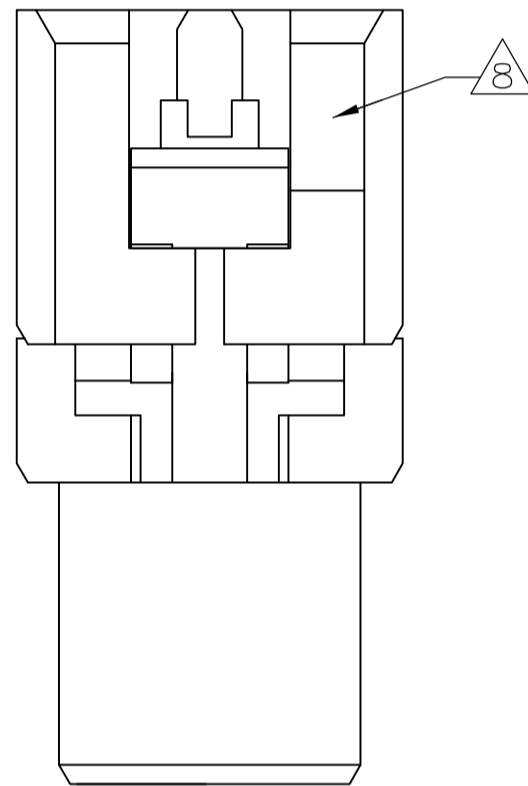
C

B

A



- 1. MOLDED PARTS: POLYESTER, UL RATED 94V-O, BLACK. CONTACTS: BERYLLIUM COPPER.
- 2. 2.54µm [.000100] MIN TIN-LEAD ON TERMINATION END, 0.76µm [.000030] MIN GOLD ON CONTACT AREA, ALL OVER 1.27µm [.000050] MIN NICKEL.
- 3. POSITION TOLERANCE APPLIES 0.76 [.030] ABOVE DATUM V.
- 4. POSITION NUMBER 1 INDICATOR.
- 5. ELECTRICAL ENGAGEMENT ZONE.
- 6. RECOMMENDED 28 AWG RIBBON CABLE, 0.61 - 0.97 [.024 - .038] THICK PVC, 1.0000[.03937] PITCH.
- 7. AMP LOGO ORIENTATION IS OPTIONAL.
- 8. RECESS ON EACH END, OPPOSITE CORNER.
- 9. 0.13µm [.000005] MIN GOLD ON TERMINATION END, 0.76µm [.000030] MIN GOLD ON CONTACT AREA, ALL OVER 1.27µm [.000050] MIN NICKEL.
- 10. MOLD GATE PROJECTION ON EITHER END OF COVER TO BE EXCLUDED FROM DIMENSION 'B' MEASUREMENT.



9	0.0000	26.42	31.17	25	26	2-111626-7
9	1.0000	24.41	29.18	23	24	2-111626-6
9	1.0000	16.41	21.18	15	16	2-111626-5
9	1.0000	8.41	13.18	7	8	2-111626-4
9	0.0000	50.39	55.17	49	50	2-111626-3
9	1.0000	44.40	49.17	43	44	2-111626-2
9	1.0000	40.41	45.19	39	40	2-111626-1
9	0.0000	34.42	39.17	33	34	2-111626-0
9	1.0000	20.40	25.17	19	20	1-111626-9
9	0.0000	14.40	19.18	13	14	1-111626-8
9	0.0000	10.41	15.16	9	10	1-111626-7
OBSOLETE	2	1.0000	8.41	7	8	1-111626-6
OBSOLETE	2	0.0000	22.40	21	22	1-111626-5
OBSOLETE	2	1.0000	68.40	67	68	1-111626-4
OBSOLETE	2	1.0000	64.41	63	64	1-111626-3
OBSOLETE	2	1.0000	60.40	59	60	1-111626-2
OBSOLETE	2	0.0000	50.39	49	50	1-111626-1
OBSOLETE	2	1.0000	44.40	43	44	1-111626-0
OBSOLETE	2	1.0000	40.41	39	40	111626-9
OBSOLETE	2	0.0000	34.42	33	34	111626-8
OBSOLETE	2	0.0000	30.40	29	30	111626-7
OBSOLETE	2	0.0000	26.42	25	26	111626-6
OBSOLETE	2	1.0000	24.41	23	24	111626-5
OBSOLETE	2	1.0000	20.40	19	20	111626-4
OBSOLETE	2	1.0000	16.41	15	16	111626-3
OBSOLETE	2	0.0000	14.40	13	14	111626-2
OBSOLETE	2	0.0000	10.41	9	10	111626-1

CONTACT FINISH	D	C	B	A	NO OF POSN	PART NO
THIS DRAWING IS A CONTROLLED DOCUMENT.						
DIMENSIONS: mm [INCHES]		TOLERANCES UNLESS OTHERWISE SPECIFIED:		C. OBERMAN 02-24-92		
0 PLC ± -		1 PLC ± -		J. MCCLINTON 3-9-92		
2 PLC ± 0.08 [.003]		3 PLC ± -		NAME		
4 PLC ± -		5 PLC ± -		PRODUCT SPEC		
MATERIAL		FINISH		APPLICATION SPEC		
1		9		SIZE		
				CAGE CODE		
				DRAWING NO		
				RESTRICTED TO		
				A1 00779 111626		
				CUSTOMER DRAWING		
				SCALE 10:1		
				SHEET 1 OF 1		
				REV M2		

Mouser Electronics

Authorized Distributor

Click to View Pricing, Inventory, Delivery & Lifecycle Information:

[TE Connectivity:](#)

[2-111626-0](#)