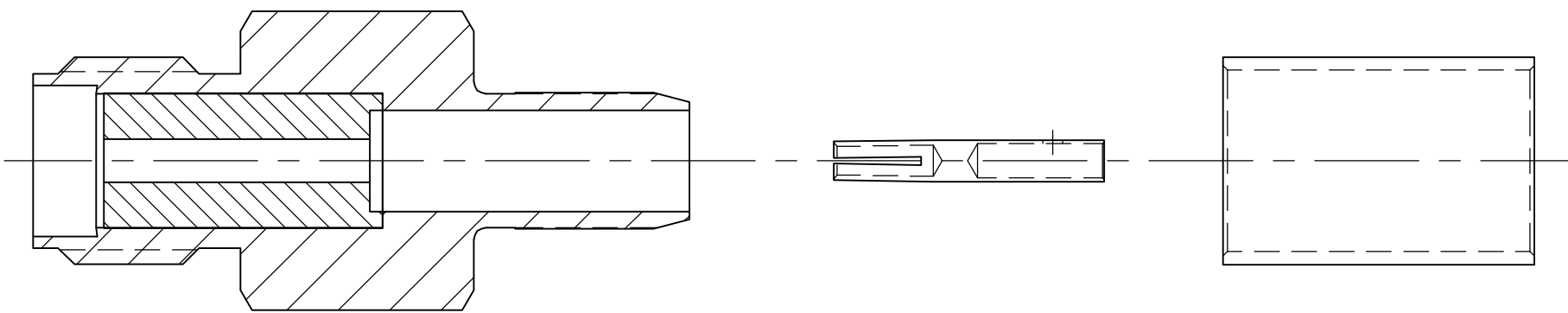


THIS DRAWING IS UNPUBLISHED.		RELEASED FOR PUBLICATION	N/A ,N/A .
© COPYRIGHT	N/A	BY TYCO ELECTRONICS CORPORATION.	ALL RIGHTS RESERVED.
COMPONENT	MATERIAL	FINISH	
HOUSING —	STAINLESS STEEL PER ASTM-A-484 OR ASTM-A-582 TYPE 303	PASSIVATED PER ASTM-A-380 —	
— DIELECTRIC —	PTFE FLUORCARBON PER ASTM-D-1457 —	— — —	
— CENTER CONTACT —	BERYLLIUM COPPER PER ASTM-B-196 OR 197 ALLOY C17300, CONDITION H	GOLD PLATED PER ASTM-B-488 —	
— — —	— — —	— — —	
— — —	— — —	— — —	
— FERRULE —	COPPER OR BRASS ALLOY, ROCKWELL F65 MAX	GOLD PLATED PER ASTM-B-488 —	
— — —	— — —	— — —	
— — —	— — —	— — —	

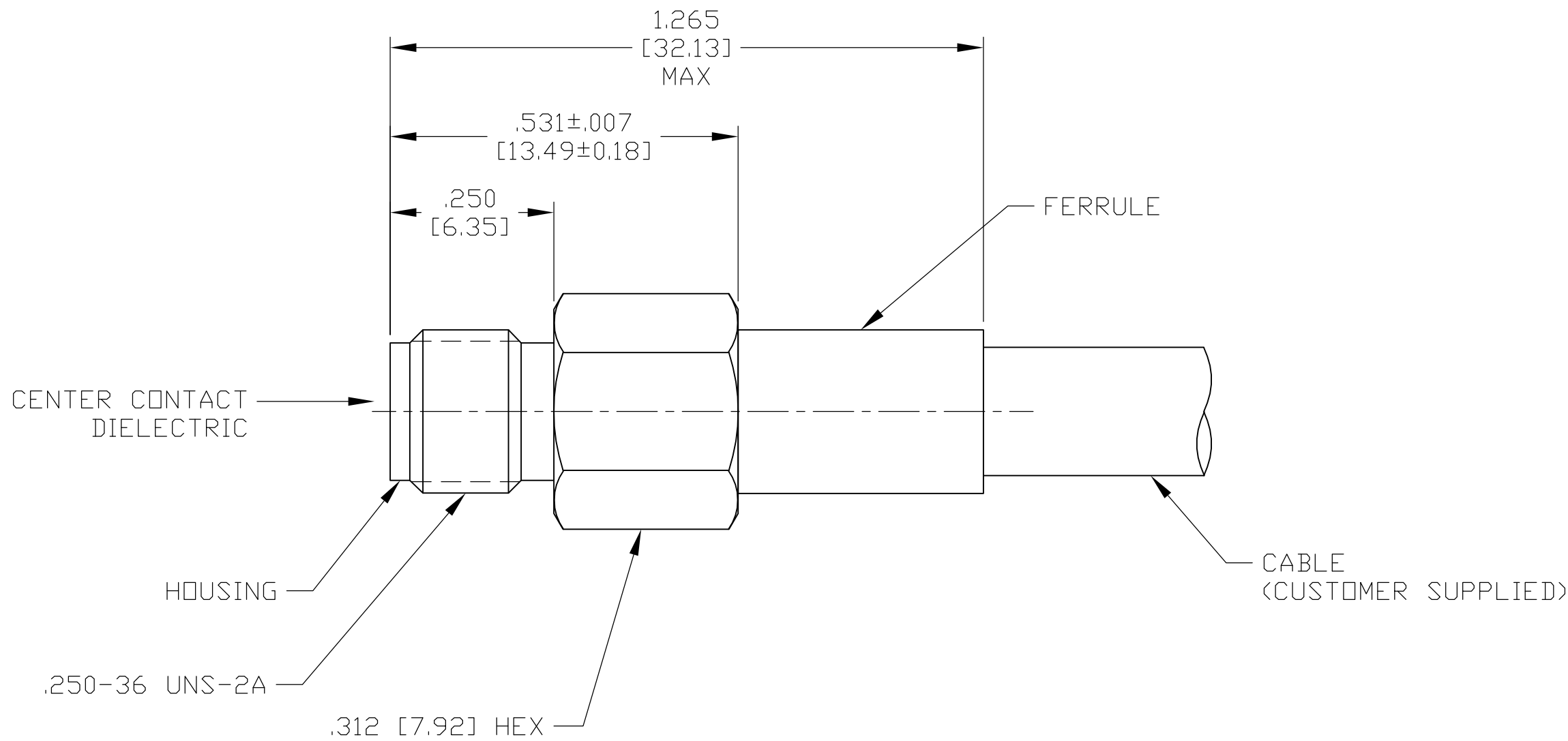
ENVIRONMENTAL
TEMPERATURE RATING: -65°C TO +165°C
VIBRATION: MIL-STD-202, METHOD 204, CONDITION D
SHOCK: MIL-STD-202, METHOD 213, CONDITION 1
MOISTURE RESISTANCE: MIL-STD-202, METHOD 106
CORROSION: MIL-STD-202, METHOD 101, CONDITION B. 5% SALT SPRAY
THERMAL SHOCK: MIL-STD-202, METHOD 107, CONDITION B EXCEPT HIGH TEMP 85°C

MECHANICAL		
INTERFACE DIMENSIONS:	MIL-STD-348A FIG.	310.2
RECOMMENDED MATING TORQUE:	7-10 IN-LBS	
FORCE TO ENGAGE & DISENGAGE (IN-LBS MAX:)	2.0	
WEIGHT (GRAMS):	TBD	
MATING CHARACTERISTICS:	INSERTION (MAX LBS)	2
	WITHDRAWAL (MIN OZ):	1
CABLE RETENTION:	AXIAL FORCE (LBS)	45
	TORQUE (IN-OZ):	N/A
CENTER CONTACT CAPTIVATION:	AXIAL (LBS):	6.0
	RADIAL (IN-OZ):	N/A

ELECTRICAL	
NORMAL IMPEDANCE (OHMS):	50
FREQUENCY RANGE (GHz):	DC TO 12.4
VOLT RATING @ SEA LEVEL (VRMS MAX):	335
VSWR: 1.15+0.01f(GHz)	
INSERTION LOSS: (dB MAX):	.06 $\sqrt{f(\text{GHz})}$
RF LEAKAGE (dB MIN):	-60 @ 2-3GHz
CORONA 70,000 FT (VRMS MIN):	250
DIELECTRIC WITHSTANDING VOLTAGE (VRMS MIN) AT SEA LEVEL:	1000
I.R. (MEGOHMS MIN):	5000
RF HIGH POTENTIAL AT SEA LEVEL (VRMS MIN @ 5 MHz):	670
CONTACT RESISTANCE (MILLIOHMS MAX):	
	CENTER CONTACT: 3.0
	OUTER CONTACT: 2.0
	CABLE TO HOUSING: 0.5

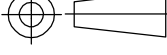



AS SHIPPED TO CUSTOMER



ASSEMBLED VIEW

DESIGNED TO USE RG-142/U OR EQUIVALENT	
CABLE ENTRY DIAMETER MIN	
HOUSING:	.121 [3.07]
CONTACT:	.039 [0.99]
DIELECTRIC:	N/A
—	—
FERRULE:	.216 [5.49]

THIS DRAWING IS A CONTROLLED DOCUMENT.	
DIMENSIONS: INCHES [mm]	TOLERANCES UNLESS OTHERWISE SPECIFIED:
	0 PLC ± - 1 PLC ± - 2 PLC ± - 3 PLC ± ±.005 [0.13] 4 PLC ± - ANGLES ± ±
MATERIAL	FINISH
SEE TABLE	SEE TABLE

OWN J. KAISER		9/09/02		 Tyco Electronics Corporation Harrisburg, PA 17105	
CHK J. LIPPERT		10-8-02			
APVD J. LIPPERT		10-8-02		NAME	
PRODUCT SPEC		SMA STRAIGHT CABLE JACK-CRIMP ATTACHMENT			
—		(M39012/57B3015) CAT B			
APPLICATION SPEC		—			
408-8743		SIZE	CAGE CODE	DRAWING NO	RESTRICTED TO
WEIGHT TBD		A2	00779	C-1051908	—
CUSTOMER DRAWING				SCALE 5:1	SHEET 1 OF 1 REV C

Mouser Electronics

Authorized Distributor

Click to View Pricing, Inventory, Delivery & Lifecycle Information:

[TE Connectivity:](#)

[1051908-1](#)